

Figure S1. Comparison of the proliferation, phenotype, and genotype (CNV) of various DK-MG sublines. Proliferation ratio of DK-MG<sup>low</sup>, DK-MG<sup>high</sup>, and DK-MG<sup>extra-high</sup> both in serum-free conditions (A) and full medium (B). Phenotypic changes between different DK-MG sublines were determined microscopically (C–E). MLPA analysis of DK-MG<sup>extra-high</sup> (F), DK-MG<sup>high</sup> (G), and DK-MG<sup>low</sup> (H) cells revealed no significant differences between sublines as shown on the graph 1D.

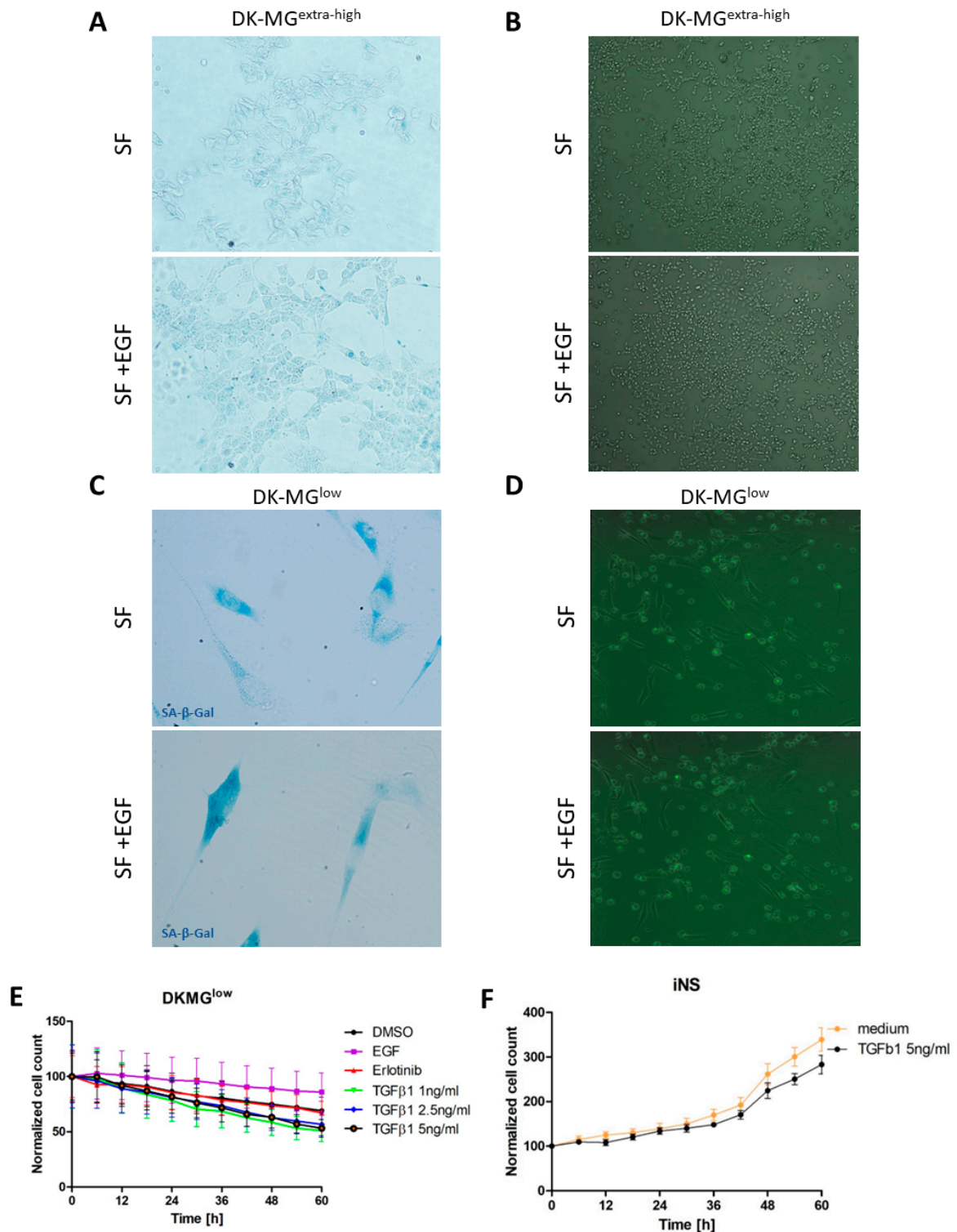


Figure S2. The influence of analyzed growth factors on different cell lines. Impact of epidermal growth factor on the induction of senescence (magnification 400x) (A) and apoptosis (magnification 40x) (B) in DK-MG<sup>extra-high</sup> glioblastoma cells after 72 h of treatment with EGF (SF + EGF) or w/o EGF (SF). EGF influence on senescence induction (magnification 600x) (C) and apoptosis in DK-MG<sup>low</sup> subline after 72 h-incubation with epidermal growth factor (SF + EGF) and in serum-free conditions (SF); magnification 40x (D). The influence of TGF $\beta$ 1 on normal cells—treatment with cytokine had no any negative effect on the proliferation ratio and viability in DK-MG<sup>low</sup> subline (E) as well as on the induced neural stem cells (F). SF—serum free medium/serum-free conditions.

Table S1. Antibodies used in immunofluorescence and Western blot analyses.

| Antibody                    | Host   | Manufacturer                               | Dilution |
|-----------------------------|--------|--|----------|
| BrdU                        | Mouse  | Sigma-Aldrich (B 8434)                     | 1: 500   |
| EGFRvIII                    | Rabbit | Absolute Antibody (L8A4)                   | 1:500    |
| EGFRvIII                    | Mouse  | Kerafast (L8A4)                            | 1:300    |
| EGFR                        | Mouse  | Santa Cruz Biotechnology (A-10, sc-373746) | 1:500    |
| ERK 1/2                     | Mouse  | Santa Cruz Biotechnology (C-9, sc-514302)  | 1:500    |
| pERK 1/2                    | Mouse  | Santa Cruz Biotechnology (E-4, sc-7383)    | 1:500    |
| pEGFR Y1068                 | Rabbit | Cell Signaling (D7A5)                      | 1:500    |
| Akt                         | Rabbit | Cell Signaling (#9272)                     | 1:500    |
| pAkt S473                   | Rabbit | Cell Signaling (D9E)                       | 1:500    |
| Actin                       | Mouse  | Millipore (MAB1501, clone 4)               | 1:4000   |
| anti-rabbit IgG-HRP         | Goat   | Santa Cruz Biotechnology (sc-2004)         | 1:4000   |
| anti-mouse IgG-HRP          | Goat   | Santa Cruz Biotechnology (sc-2005)         | 1:4000   |
| anti-mouse Alexa Fluor 594  | Donkey | Life Technologies                          | 1:500    |
| anti-rabbit Alexa Fluor 488 | Donkey | Life Technologies                          | 1:500    |