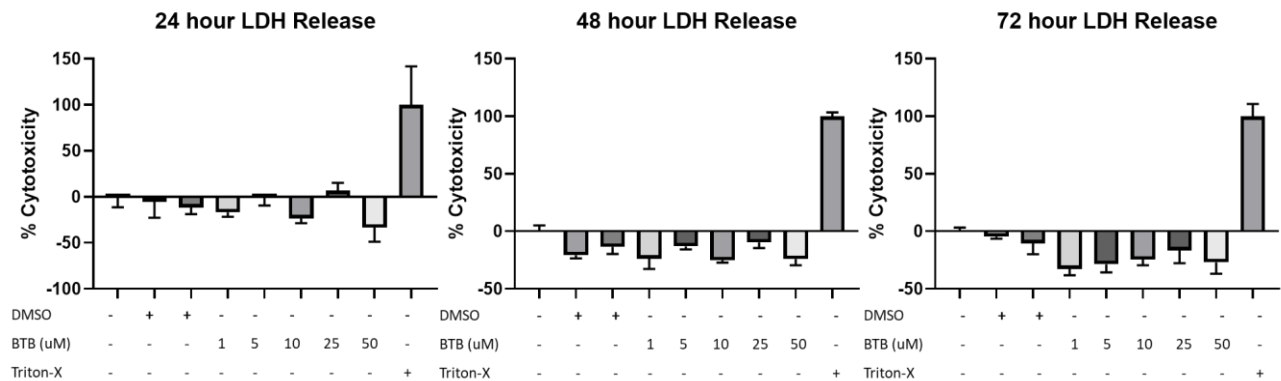
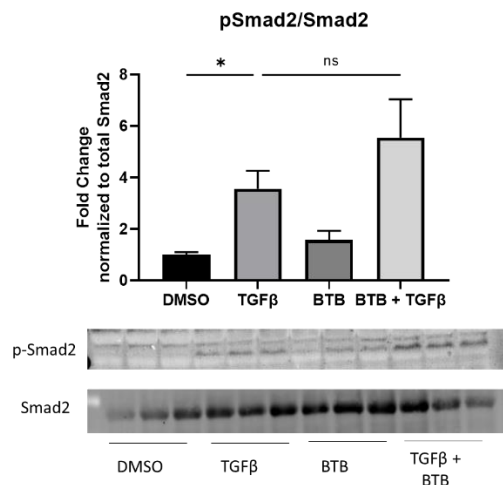


## BTB Paper Supplemental Figures



**Supplemental Figure S1 (SF1). BTB Does Not Induce Cell Death Over 72 hours.** Fibroblasts were cultured on 96 well plates for 72 hours. Media was removed every 24 hours for 72 hours (the cumulative removed media volume never exceeded 10% of the total well volume) and assayed for LDH content.



**Supplemental Figure S2 (SF2). BTB Does Not Inhibit Smad2 Phosphorylation.** Fibroblasts were treated with 1 ng/mL TGFβ and/or 50 μM BTB for 60 minutes before protein was harvested to examine Smad2 phosphorylation. Data was analyzed by ANOVA, n=3/group, \*=P<.05.

## Supplemental Table S1. Primary Antibodies.

Antibody	Company	Catalogue Number
AIF	Cell Signaling Technology	4642
Alpha smooth muscle actin-Cy3	Sigma	C6198
Beta-tubulin-Cy3	Abcam	Ab11309

Calponin	Abcam	Ab46794
Cofilin	Cell Signaling Technology	5175S
Cofilin	Santa Cruz	SC-376476
Collagen 1	Aviva	ARP59999
DAAM1	Santa Cruz	SC-100942
Fibronectin	Abcam	Ab6328
Gβ	Santa Cruz	SC-166123
Histone H3	Cell Signaling Technology	9715
HSP90	Cell Signaling Technology	4874
Lamin A/C	Cell Signaling Technology	4777
mDia	Thermo Fisher Scientific	20624-1-AP
p-cofilin	Cell Signaling Technology	3313S
Profilin	Santa Cruz	SC-137235
pSmad2	Abcam	188334
RhoA	Cell Signaling Technology	2117S
ROCK1	Abcam	EPR638Y
Smad2	Cell Signaling Technology	3103S
TDAG8	Sigma	SAB29000463