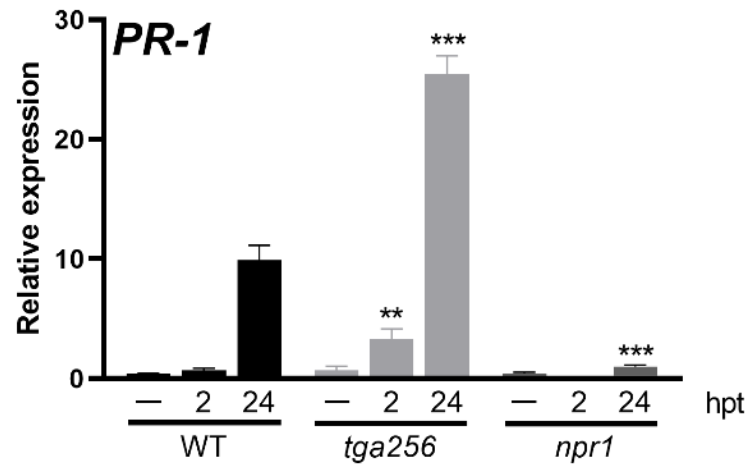
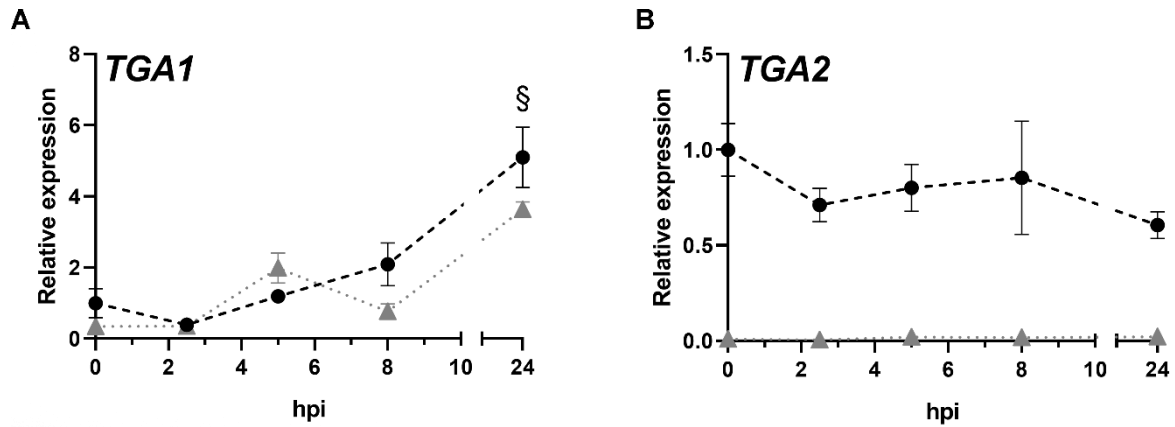


**Figure S1. The PR-1 transcript is not differentially expressed in the *tga2-1/tga5-1* mutant plant compared to WT in response to UV-C.** *PR-1* transcript was evaluated in WT and the double mutants *tga2-1/tga5-1* (*tga25*). 15-day-old plate-grown plants were irradiated with UV-C for 20 minutes (+). Plants covered with a UV-C filter were used as control (—). After the treatment, plants were transferred to normal growth conditions. Samples were frozen after 24 hours. RNA was extracted, cDNA was synthesized, and *PR-1* expression was evaluated by qPCR. Bars indicate the mean of the relative expression of *PR-1*  $\pm$  SEM from four biological replicates (n=4). No statistical differences were detected between genotypes according to a 2-way ANOVA and Sidak's post-test (p>0.1).





**Figure S3: *PR-1* expression depends on the NPR1 in UV-C treatment.** 15-day-old WT, *tga2-1/tga5-1/tga6-1* (*tga256*), and *npr1-2* (*npr1*) mutant seedlings were treated with UV-C. Non-irradiated seedlings were used as controls (—). Treated seedlings were frozen two and 24 hour post-treatment (hpt). RNA was extracted, and the *PR-1* expression was evaluated by RT-qPCR. Bars represent the mean of the relative expression  $\pm$  SEM from four biological replicates. Asterisks indicate statistically significant differences between the mutant genotypes and the WT plants according to a 2-way ANOVA analysis and Sidak's post-test (\*\*: $p < 0.01$ , \*\*\*: $p < 0.001$ ).



**Figure S4: The TGA2 gene is not induced by the treatment that induces the SA accumulation.** 4-week-old WT (black circles) and *tga256* mutant (gray triangles) plants were syringe-infiltrated with Pst DC3000/AvrRPM1 ( $OD_{\lambda 600}=0.01$ ). Samples were collected 2.5, 5, 8, and 24 hours post inoculation (hpi). Noninoculated plants were used as controls (0 hpi). RNA was extracted, and the gene expression of **(A)** *TGA1* and **(B)** *TGA2* was evaluated by RT-qPCR. The data represents the mean of the relative gene expression  $\pm$  SEM from 4 biological replicates. No differences were detected in the *TGA1* expression between genotypes. § indicate a statistically significant difference compared to the control condition and time zero. No statistically significant differences were detected in the *TGA2* expression in WT plants compared to time zero ( $p>0.05$ ). As expected, *TGA2* was not detected in the *tga256* genotype.

**Table S1. Oligonucleotides**

	AGI	Gene		Sequence
RTqPCR	AT2G14610	<i>PR-1</i>	Fw Rv	ACACGTGCAATGGAGTTTGTGG TTGGCACATCCGAGTCTCACTG
	AT3G48090	<i>EDS1</i>	Fw Rv	CGAAGGGGACATAGATTGGA ATGTACGGCCCTGTGTCTTC
	AT3G52430	<i>PAD4</i>	Fw Rv	GCAAGTATCTTGCGTTGTGC TAAAGACTGGCGGGCATTAC
	AT5G26920	<i>CBP60g</i>	Fw Rv	AATAACGAGGAGGATGAGAACG TCAGACACGGTAAGAAACATCG
	AT1G73805	<i>SARD1</i>	Fw Rv	CCTCAACCAGCCCTACGTTA TAGTGGCTCGCAGCATATTG
	AT4G39030	<i>EDS5</i>	Fw Rv	GTGACAAGAAGTGGCTATGGTTT GACTCGGCCCATCTGAATTA
	AT5G13320	<i>PBS3</i>	Fw Rv	GCGTTGTTGTAGAAACCAGTCACC GTTGTCACAAATTCGCTGGCTTG
	AT5G65210	<i>TGA1</i>	Fw Rv	ACGAACCTGTCCATCAATTCGG CCATGGGAAGTATCCTCTGACACG
	AT5G06950	<i>TGA2</i>	Fw Rv	AAAGCTTCTGGCGAATCAGTTGG TGACTGTTGTAAGCTCTCCATCCC
	AT5G08290	<i>YLS8</i>	Fw Rv	TTACTGTTTCGGTTGTTCTCCATT CACTGAATCATGTTTGAAGCAAGT
	AT1G74710	<i>ICS1</i>	Fw Rv	CACTGCAGACACCTAATTGAGTCC GCTTGGCTAGCACAGTTACAGC
Genotype analysis	AT1G74710	<i>sid2-2</i>	Fw Mut Fw WT Rv	TTCTTCATGCAGGGGAGGAG CAACCACCTGGTGCACCAGC AAGCAAAATGTTTGAGTCAGCA
	AT5G06950/AT5G06960	<i>tga2-1/tga5-1</i>	Fw Rv WT Rv mut	CTTTCCTCGGCAAGTCAATC CCCAAGCTCTCTGATTTTGC TATGTTGTGACCGGACCAGA
	AT3G12250	<i>tga6-1</i>	Fw Rv WT Rv mut	CAGCAACCAAATTCATCG CAAGCCTCCCAGGAGTGA AGCAGCGTCACCACATCA