

## Supplementary Materials

Article

# Structural Studies on Diverse Betacyanin Classes in Matured Pigment-Rich Fruits of *Basella alba* L. and *Basella alba* L. var. 'Rubra' (Malabar Spinach)

Katarzyna Sutor-Świeży <sup>1</sup>, Michał Antonik <sup>1</sup>, Ewa Dziedzic <sup>2</sup>, Monika Bieniasz <sup>2</sup>, Przemysław Mielczarek <sup>3,4</sup>, Łukasz Popenda <sup>5</sup>, Karol Pasternak <sup>6</sup>, Małgorzata Tyszka-Czochara <sup>7</sup> and Sławomir Wybraniec <sup>1,\*</sup>

<sup>1</sup> Department C-1, Faculty of Chemical Engineering and Technology, Cracow University of Technology, ul. Warszawska 24, 31-155 Cracow, Poland

<sup>2</sup> Faculty of Biotechnology and Horticulture, Agricultural University of Krakow, al. 29 Listopada 54, 31-425 Krakow, Poland

<sup>3</sup> Department of Analytical Chemistry and Biochemistry, Faculty of Materials Science and Ceramics, AGH University of Science and Technology, al. Adama Mickiewicza 30, 30-059, Krakow, Poland

<sup>4</sup> Laboratory of Proteomics and Mass Spectrometry, Maj Institute of Pharmacology, Polish Academy of Sciences, ul. Smętna 12, 31-343 Krakow, Poland

<sup>5</sup> NanoBioMedical Centre, Adam Mickiewicz University, ul. Wszechnicy Piastowskiej 3, 61-614 Poznan, Poland

<sup>6</sup> Institute of Bioorganic Chemistry, Polish Academy of Sciences, ul. Noskowskiego 12/14, 61-704 Poznan, Poland

<sup>7</sup> Faculty of Pharmacy, Jagiellonian University Medical College, ul. Medyczna 9, 30-688 Krakow, Poland

\* Correspondence: slawomir.wybraniec@pk.edu.pl; Tel.: +48-12-628-3074; Fax: +48-12-628-2036

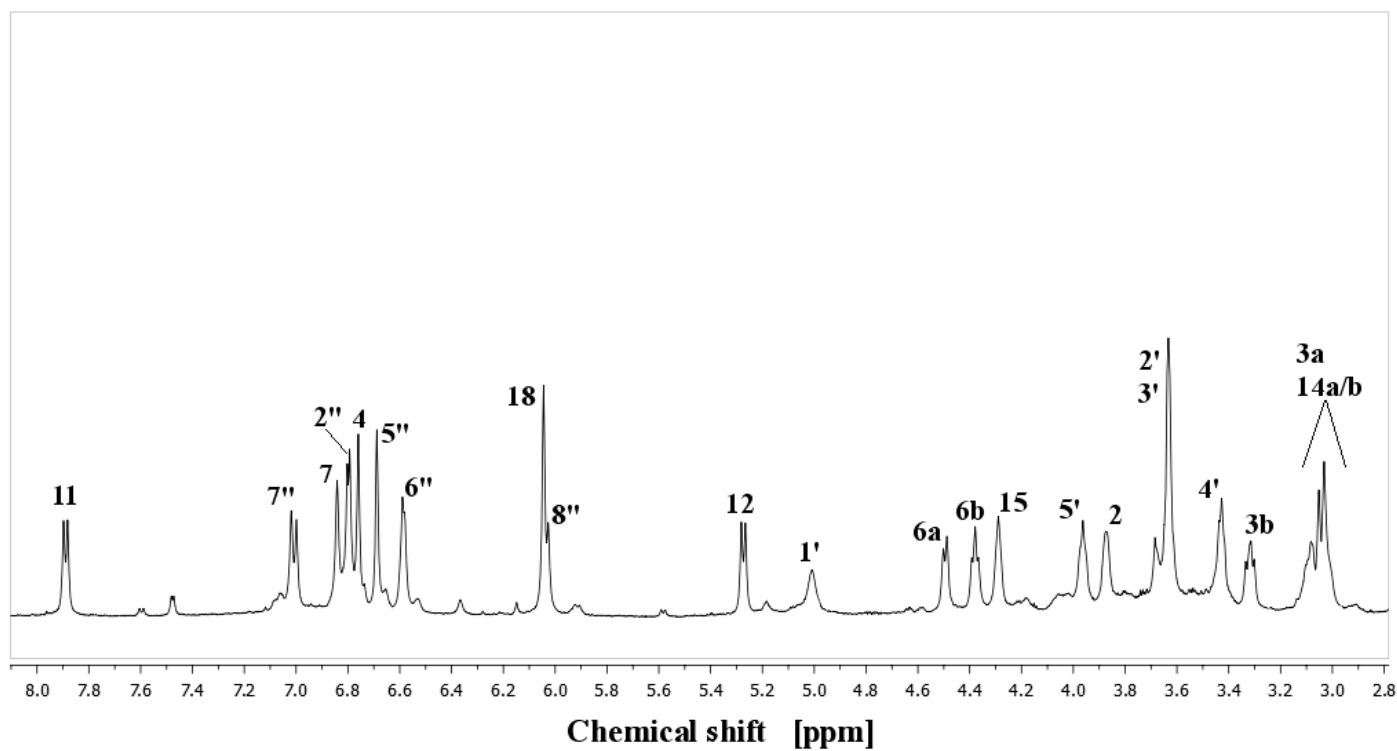


Figure S1.  $^1\text{H}$  NMR spectrum of 6'-O-E-caffeoyl-gomphrenin **15** ( $\text{D}_2\text{O}$ , 295 K).

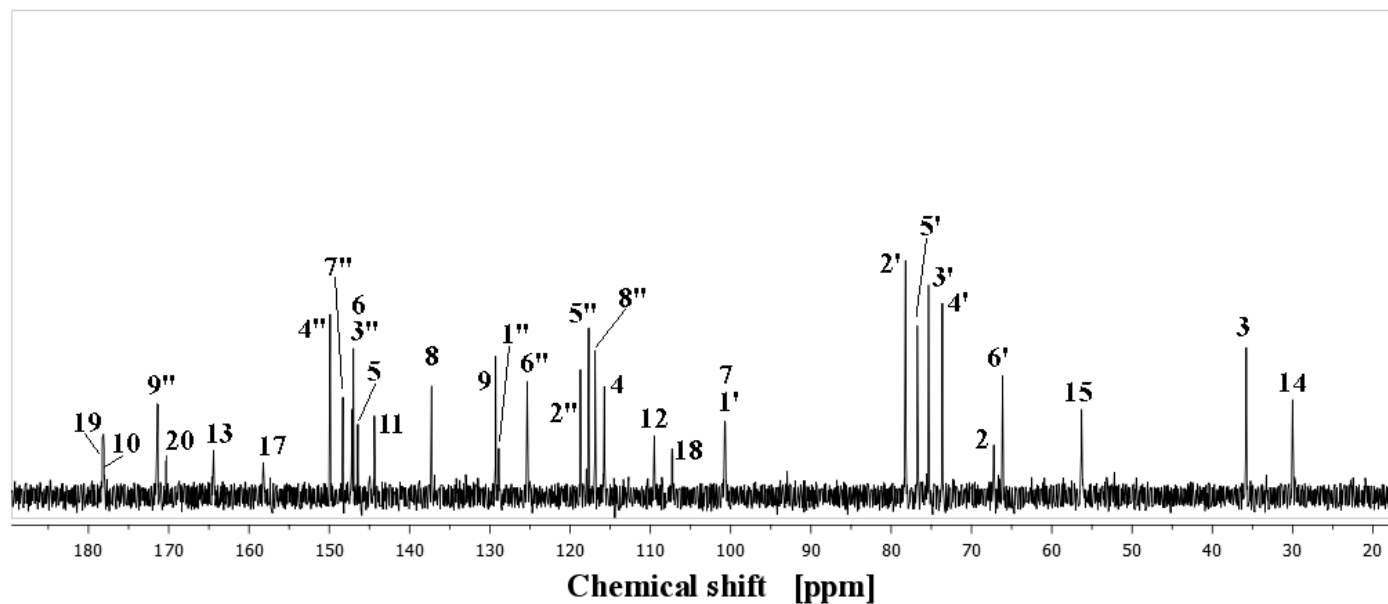
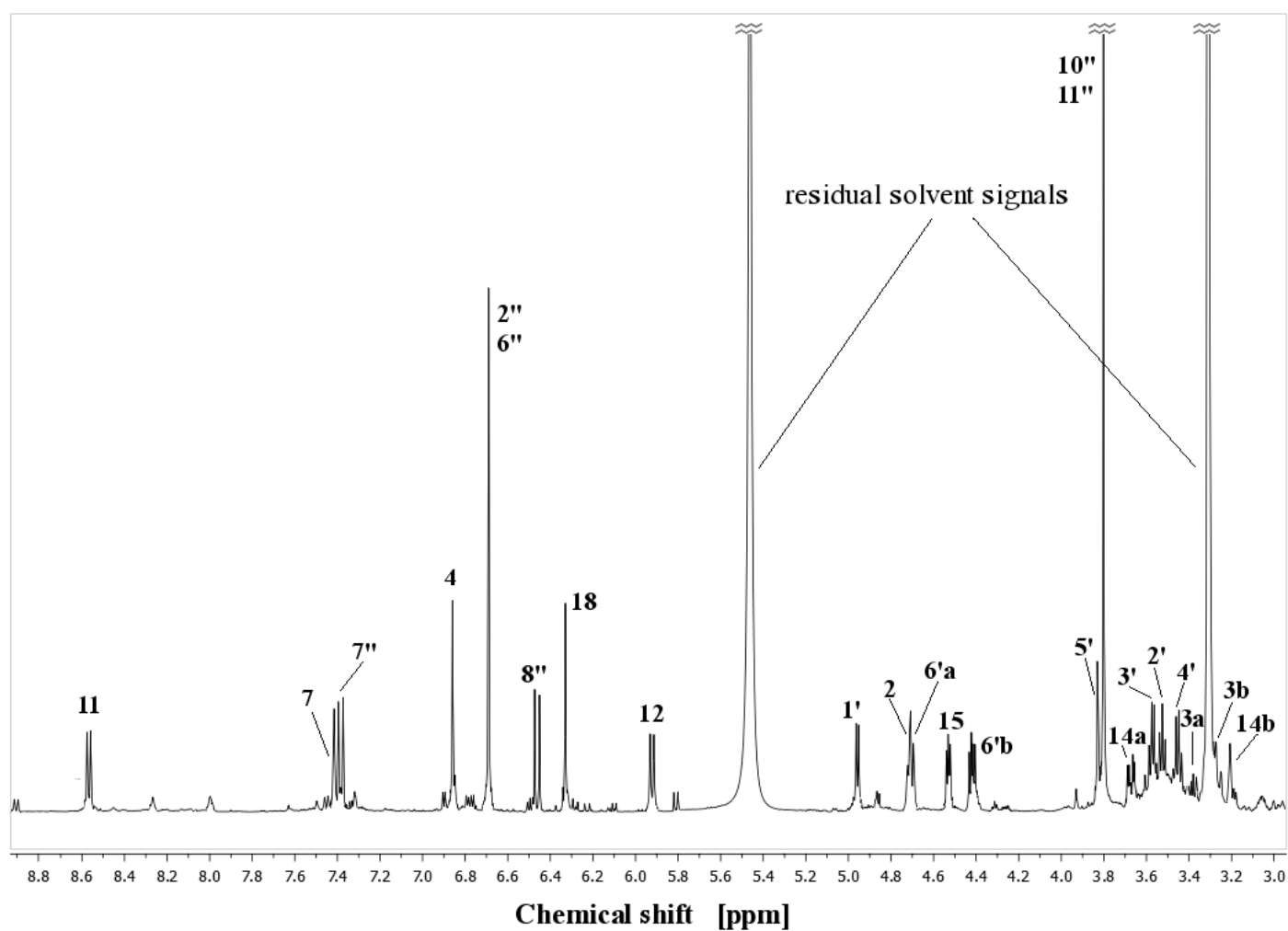
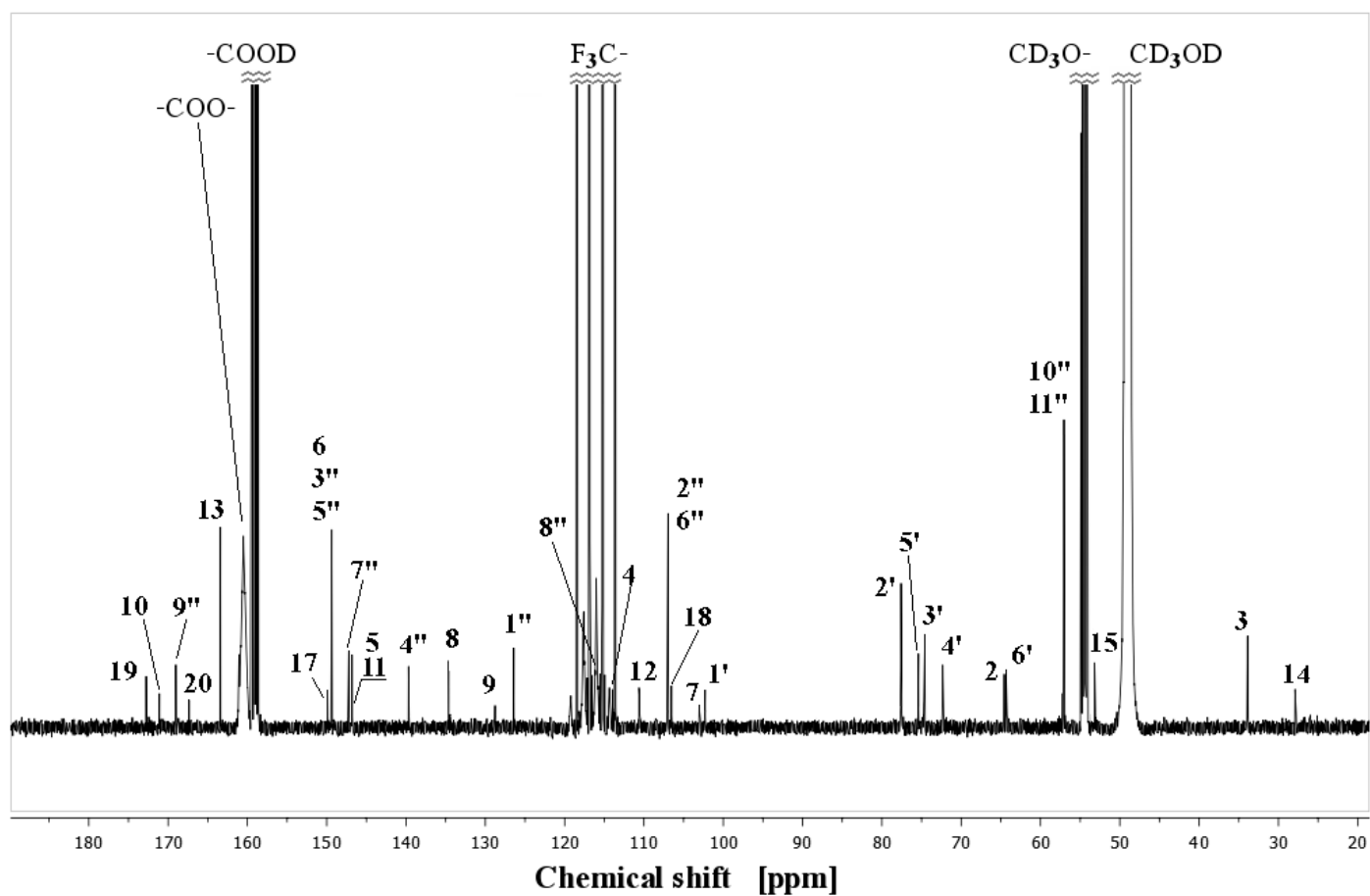


Figure S2.  $^{13}\text{C}$  NMR spectrum of 6'-O-E-caffeoyl-gomphrenin **15** ( $\text{D}_2\text{O}$ , 295 K).



**Figure S3.**  $^1\text{H}$  NMR spectrum of 6'-*O*-*E*-sinapoyl-gomphrenin **19** ( $\text{CD}_3\text{OD}/d\text{-TFA}$ , 295 K).



**Figure S4.**  $^{13}\text{C}$  NMR spectrum of 6'-O-E-sinapoyl-gomphrenin **19** ( $\text{CD}_3\text{OD}/d\text{-TFA}$ , 295 K).

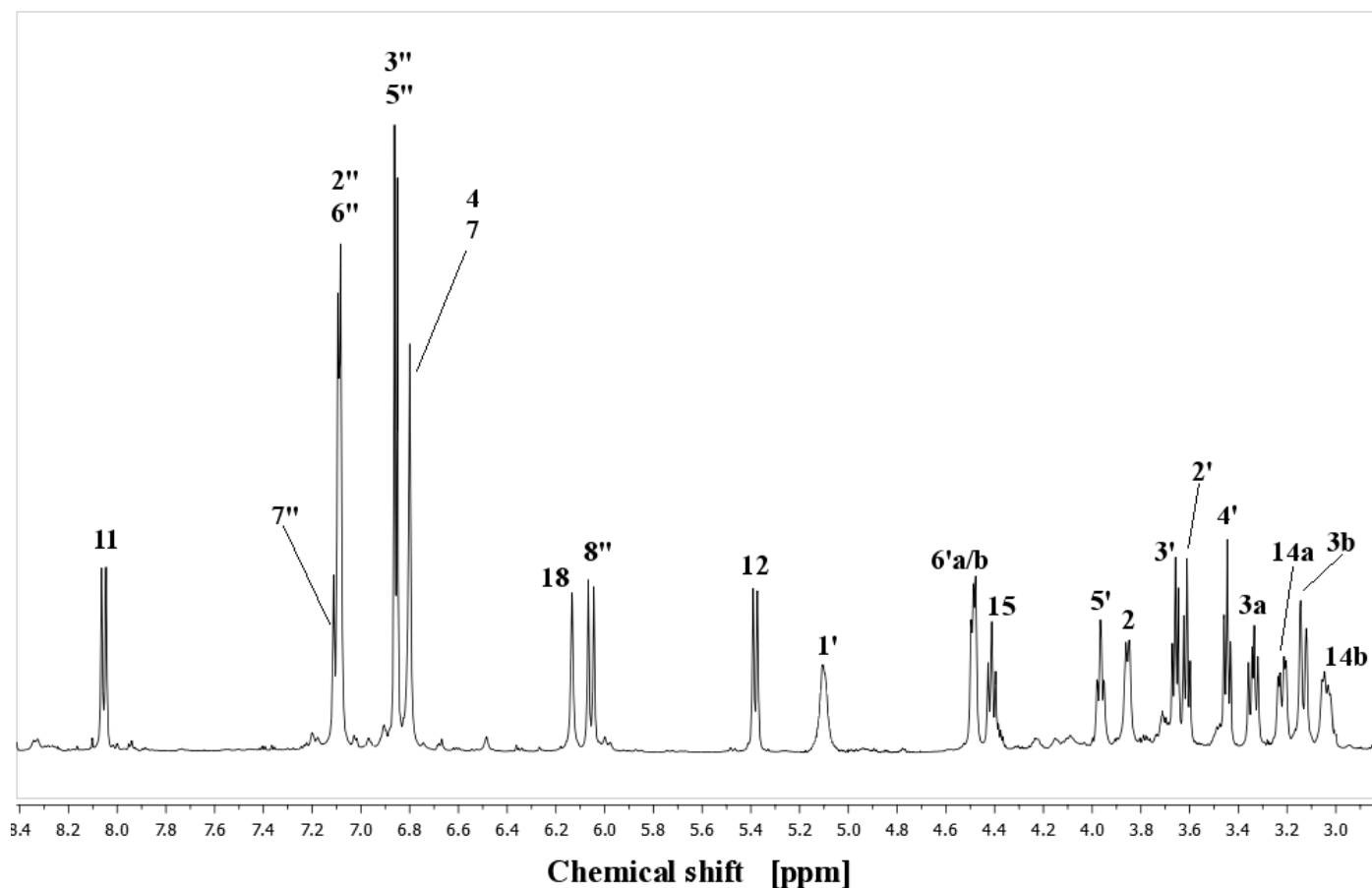


Figure S5.  $^1\text{H}$  NMR spectrum of 6'-O-E-4-coumaroyl-gomphrenin **20** ( $\text{D}_2\text{O}$ , 295 K).

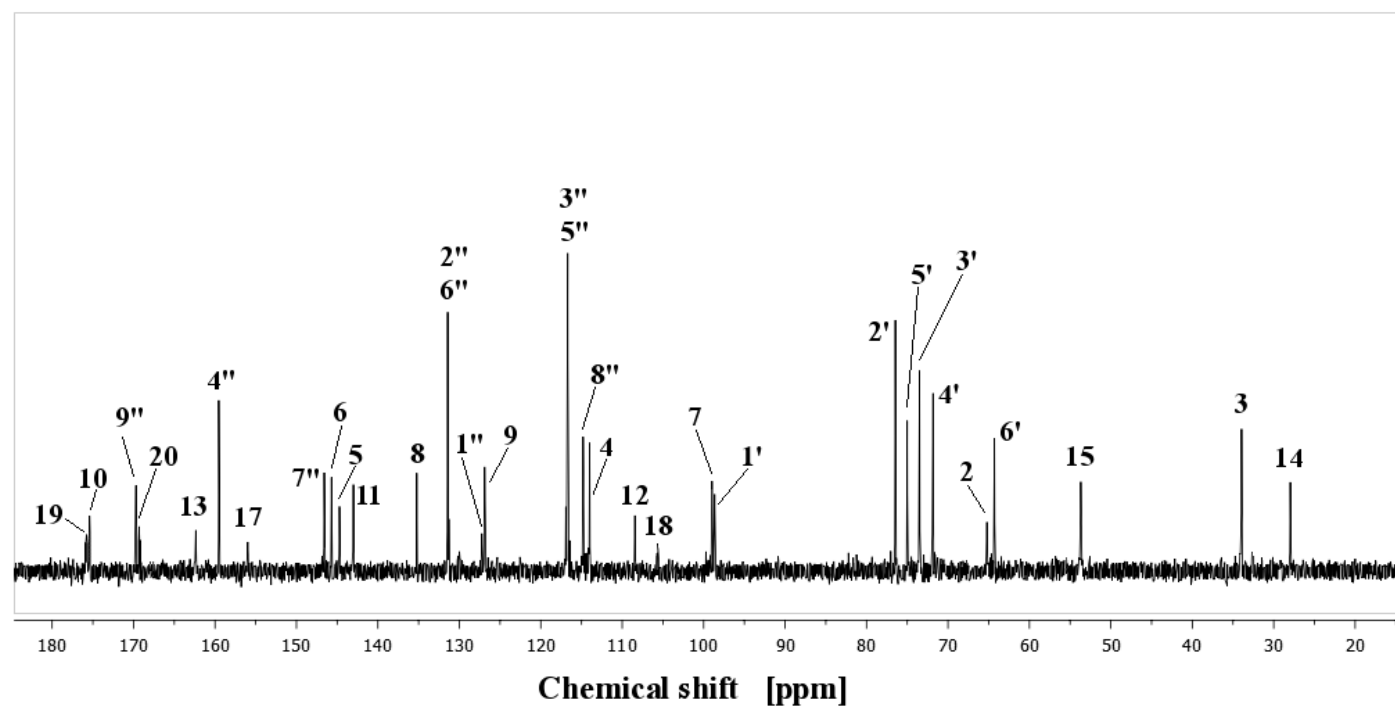


Figure S6.  $^{13}\text{C}$  NMR spectrum of 6'-O-E-4-coumaroyl-gomphrenin **20** ( $\text{D}_2\text{O}$ , 295 K).

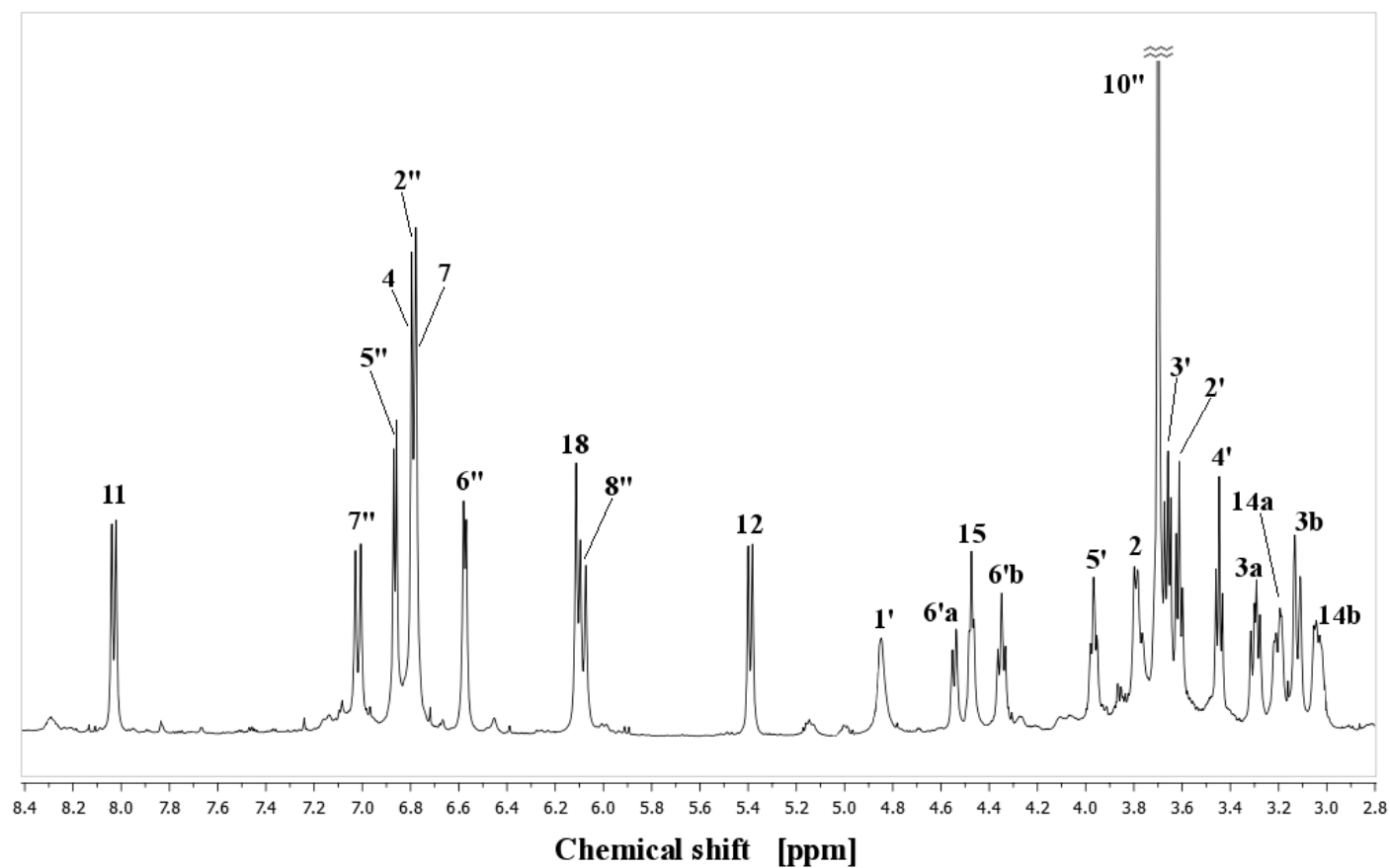


Figure S7.  $^1\text{H}$  NMR spectrum of 6'-O-E-feruloyl-gomphrenin **21** ( $\text{D}_2\text{O}$ , 295 K).

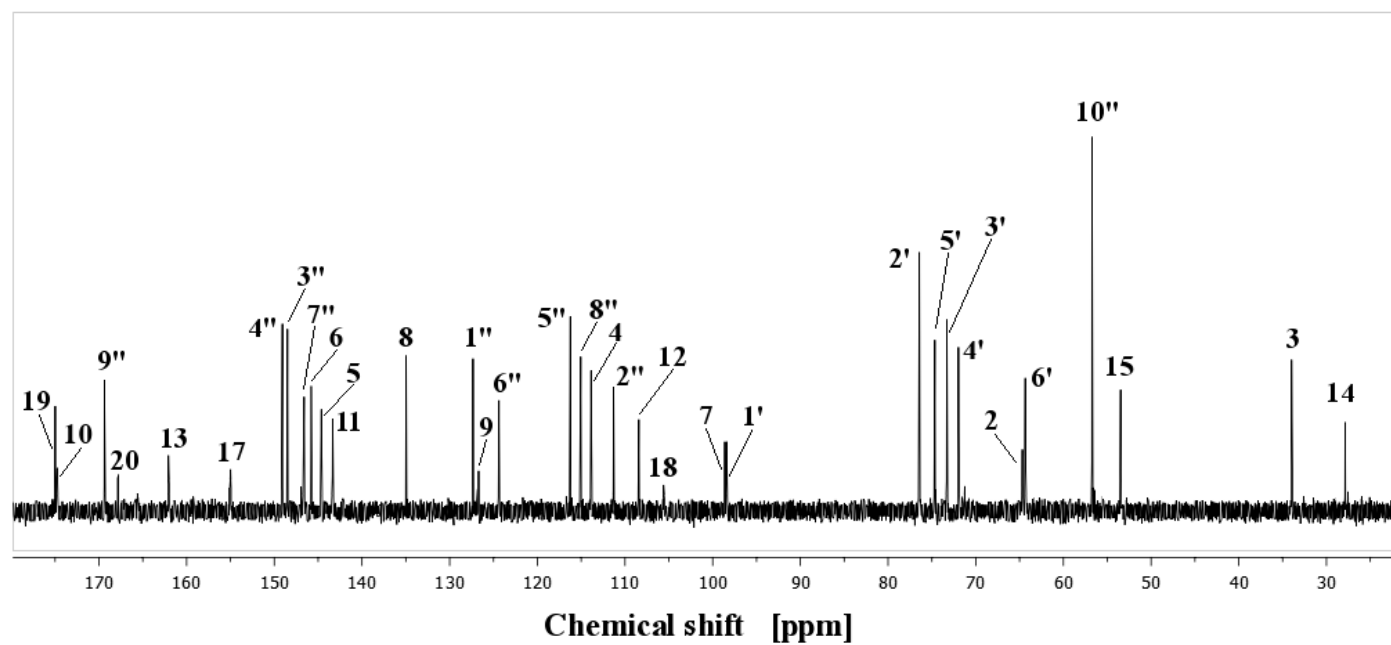


Figure S8.  $^{13}\text{C}$  NMR spectrum of 6'-O-E-feruloyl-gomphrenin **21** ( $\text{D}_2\text{O}$ , 295 K).