



Article

Impact of Leptin on Macrophages during Mechanical Strain

1. Uncropped Westernblots

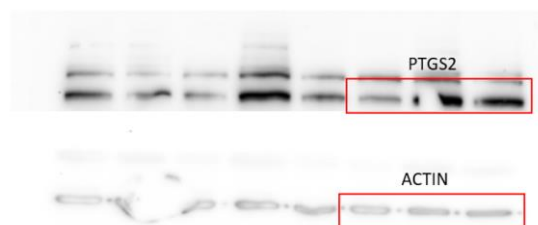


Figure S1. Uncropped Western Blot for Fig. 4h.

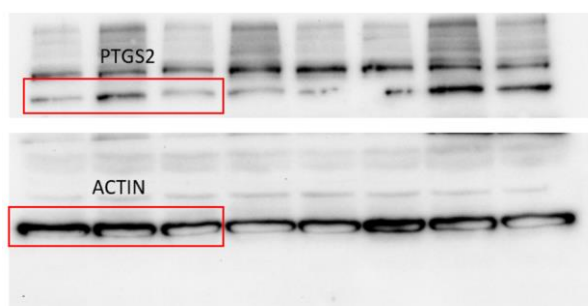


Figure S2. Uncropped Western Blot for Fig. 5h.

2 Cell Numbers and LDH Release after Different Conditions

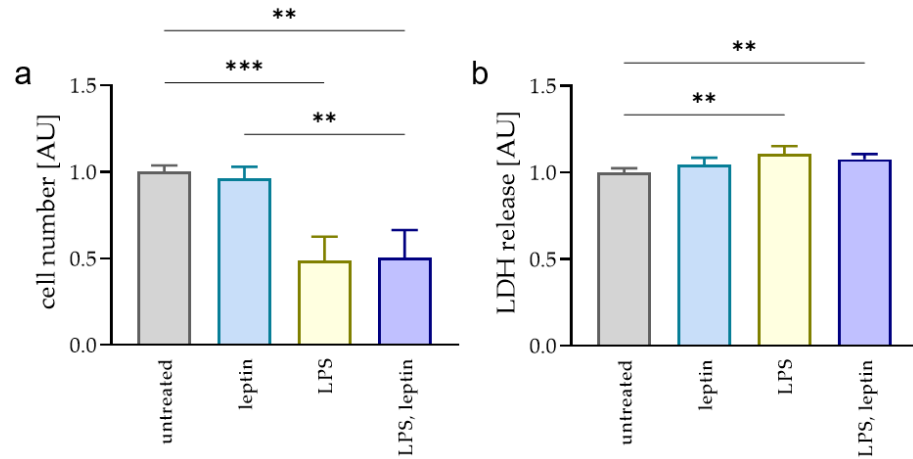


Figure S3. Impact of leptin, *Porphyromonas gingivalis* LPS and a combination of both on cell number (a) and lactatdehydrogenase (LDH) release. n n=6; Statistics: Welch-corrected ANOVA with Dunnett's T3 multiple comparisons test; ** $P < 0.01$, *** $P < 0.001$.

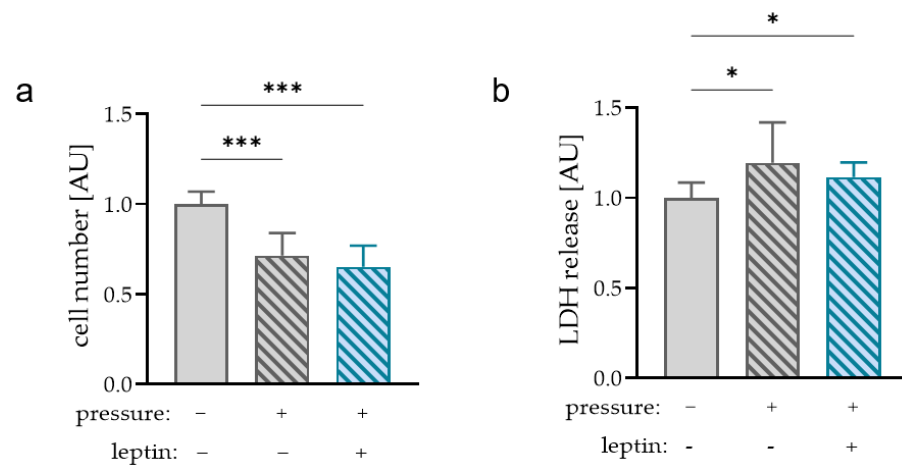


Figure S4. Impact of leptin in combination with compressive strain on cell number (a) and lactatdehydrogenase (LDH) release. n≥9; Statistics: Welch-corrected ANOVA with Dunnett's T3 multiple comparisons test; * $P < 0.05$, *** $P < 0.001$.

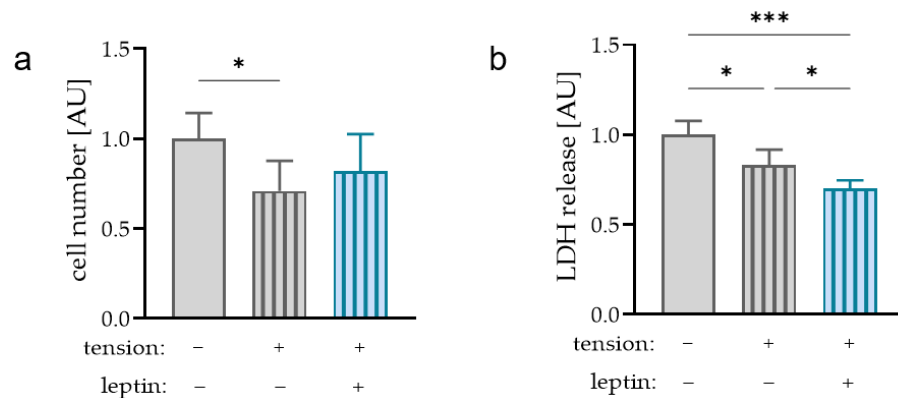


Figure S5. Impact of leptin in combination with tensile strain on cell number (a) and lactatdehydrogenase (LDH) release. n=6; Statistics: Welch-corrected ANOVA with Dunnett's T3 multiple comparisons test; * $P < 0.05$, *** $P < 0.001$.