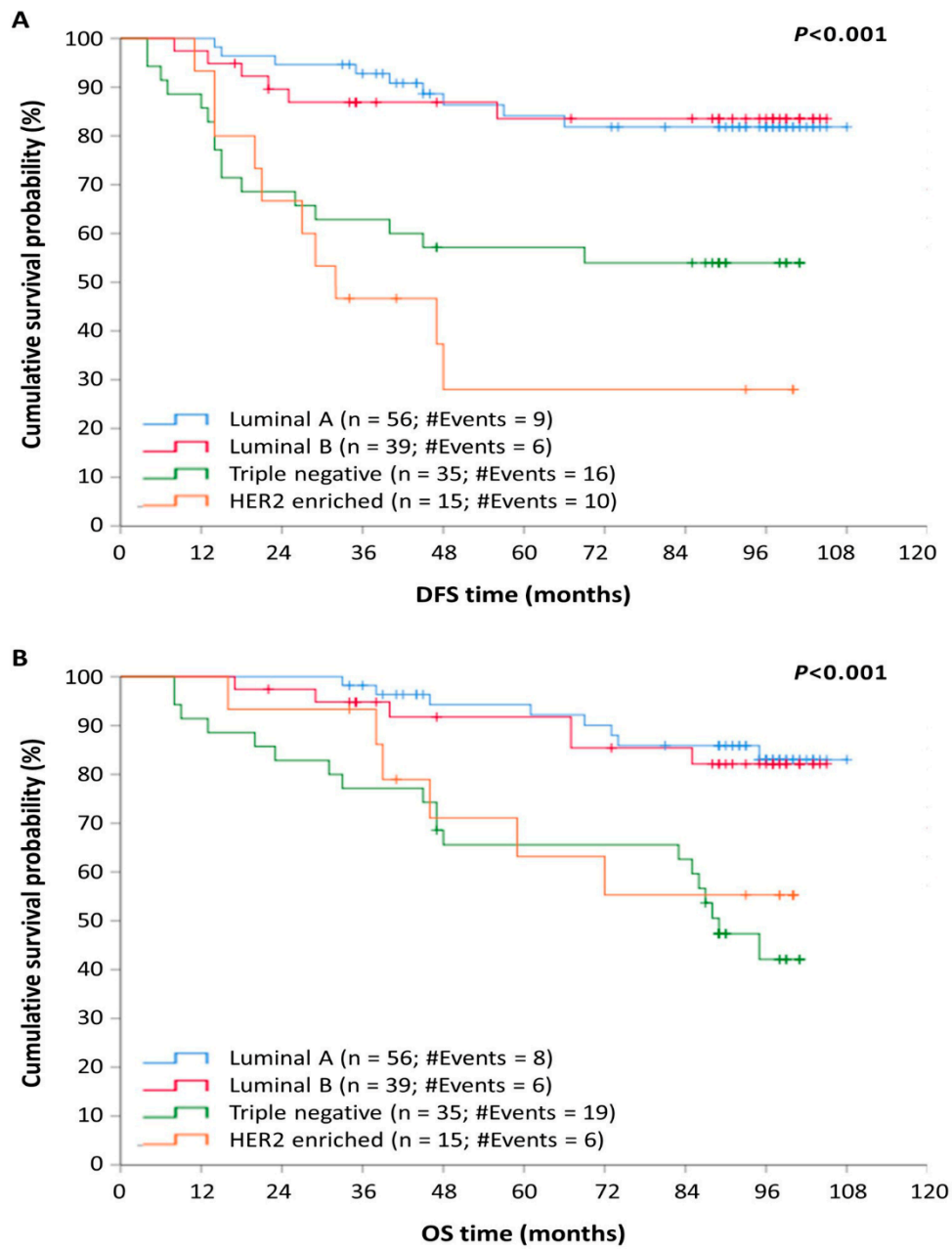
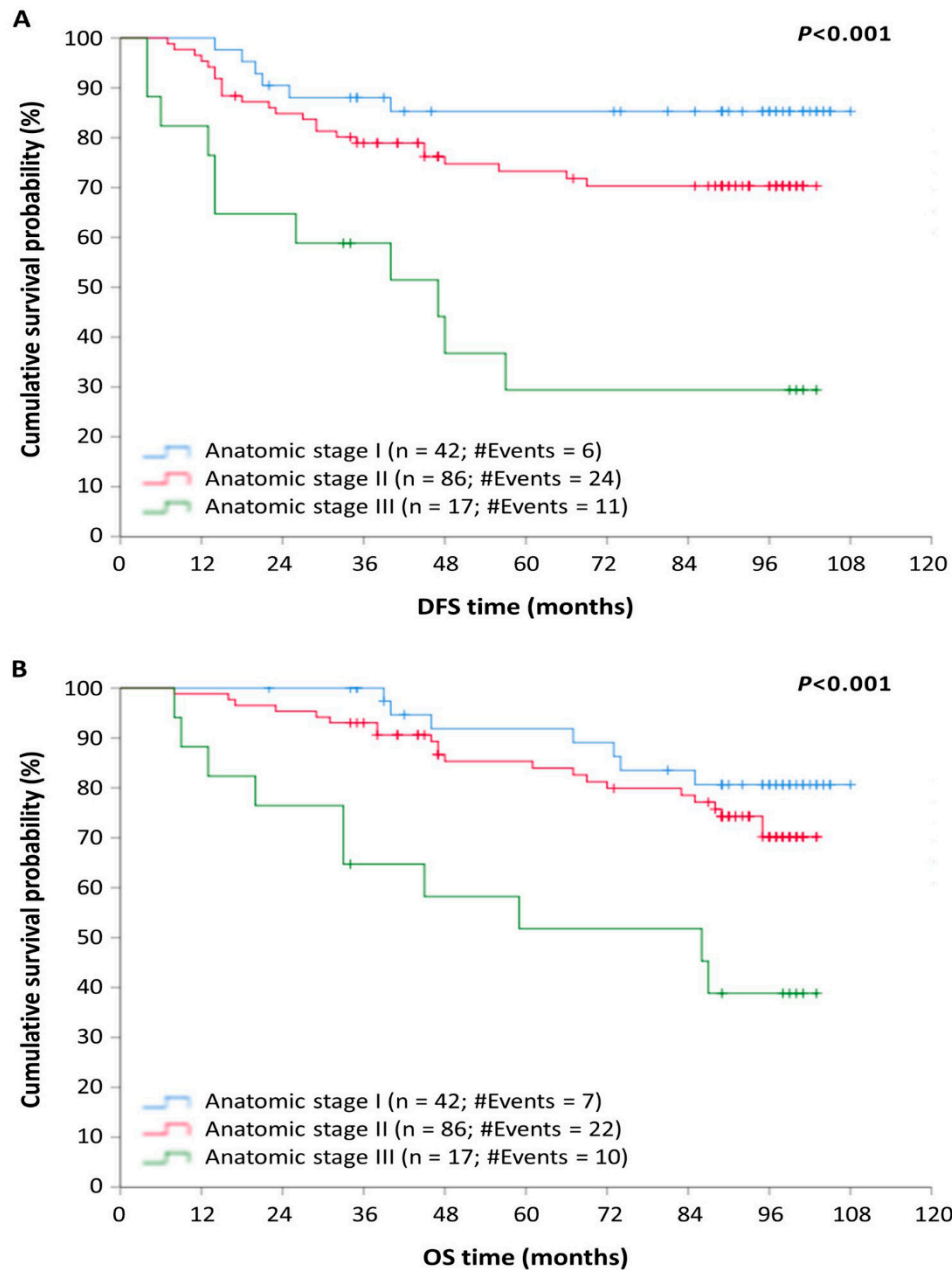


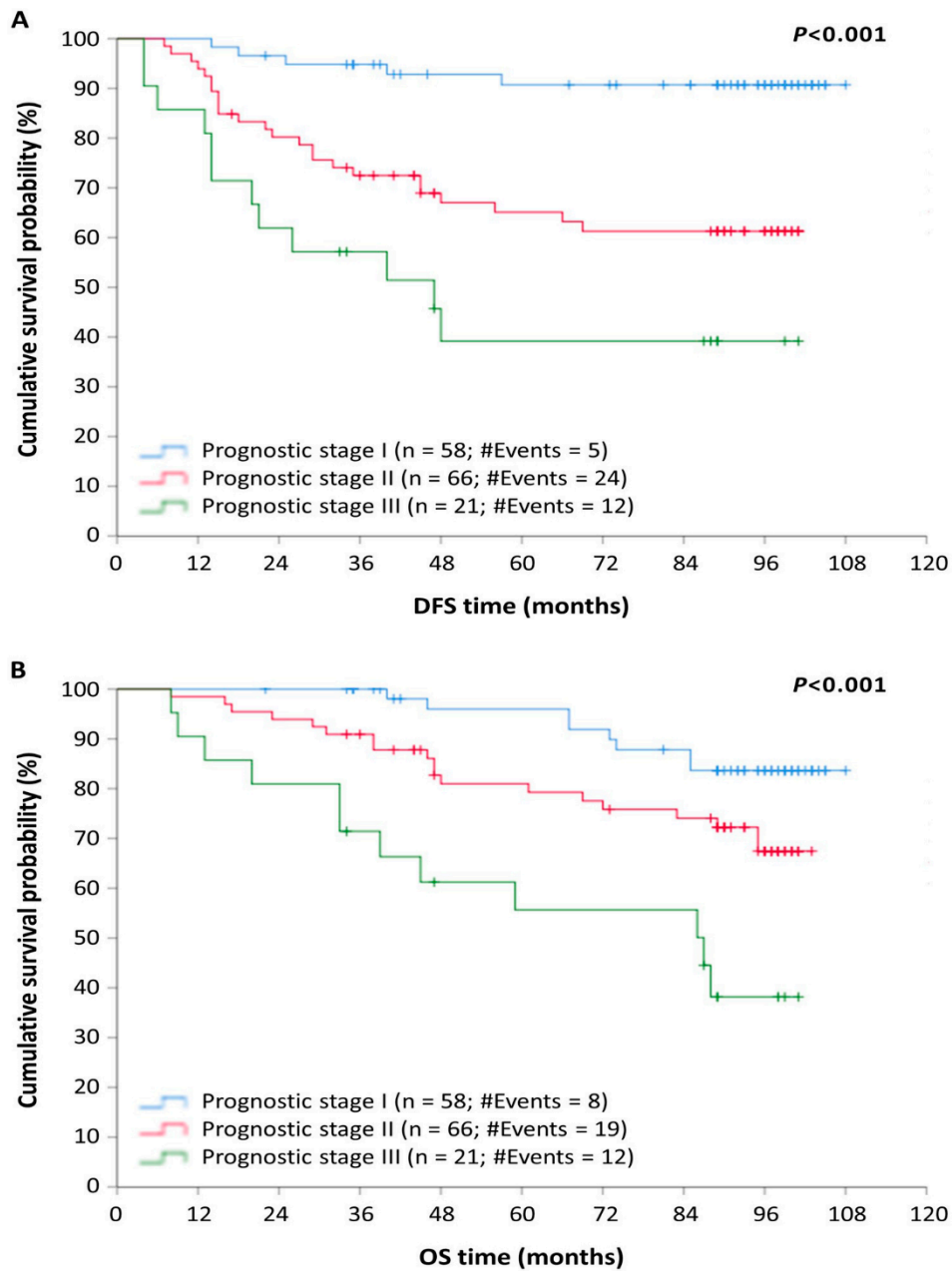
### Supplementary Figures



**Figure S1:** Stratified Kaplan-Meier survival curves, according to the molecular subtype, for disease-free survival (DFS) and overall survival (OS) of BrCa patients. Patients with triple negative or HER2 positive tumors had significantly lower DFS (**A**) and OS (**B**) rates intervals as compared with patients with luminal A or luminal B tumors. The  $p$  values were calculated using the log-rank test.



**Figure S2:** Stratified Kaplan-Meier survival curves, according to the anatomic stage, for disease-free survival (DFS) and overall survival (OS) of BrCa patients. Patients with tumors of anatomic stage III had remarkably shorter DFS (**A**) and OS (**B**) compared to those with tumors of anatomic stage I or II. The  $p$  values were calculated using the log-rank test.



**Figure S3:** Stratified Kaplan-Meier survival curves, according to the prognostic stage, for disease-free survival (DFS) and overall survival (OS) of BrCa patients. Patients with prognostic stage III tumors were more likely to have poor outcomes, such as relapse (**A**) and death (**B**), as compared to patients with stage I or II tumors. The  $p$  values were calculated using the log-rank test.