

Supplementary material

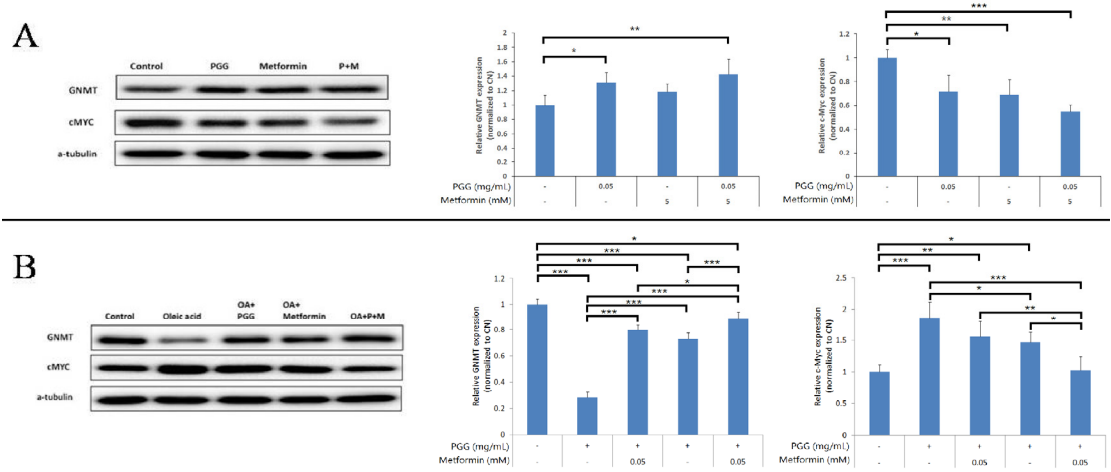
Reversal of High-Fat Diet-induced Non-Alcoholic Fatty Liver Disease by
Metformin Combined with PGG₂, an inducer of Glycine N-methyltransferase

Ming-Hui Yang, Wei-You Li, Ching-Fen Wu, Yi-Ching Lee, Allan Yi-Nan Chen,
Yu-Chang Tyan*, Yi-Ming Arthur Chen*

Table of contents

Supplementary Figure S1	Page 2
Supplementary Table S1.	Page 3
Supplementary Table S2.	Page 3

Figure



Supplementary Figure S1. Protein expression detection of GNMT and c-Myc from Mahlavu cells without oleic acid (A) and with oleic acid(B). (* $p < 0.05$; ** $p < 0.01$; *** $p < 0.001$) (N=3/group)

Tables

Supplementary Table S1. Primer sequences.

Target	Primer sequences (5'-3')
GNMT	Forward: GTTGACGCTGGACAAAGA
	Reverse: AGCCTGTGCTGAGGATA
SREBP-1c	Forward: CACTTCTGGAGACATCGCAAAC
	Reverse: ATGGTAGACAACAGCCGCATC
PPAR α	Forward: CAAGGCCTCAGGGTACCACT
	Reverse: TTGCAGCTCCGATCACACTT
PPAR γ	Forward: ATTCTGGCCCACCAACTTCGG
	Reverse: TGGAAGCCTGATGCTTATCCCCA
TNF α	Forward: GCCTCTTCTCATTCTGCTTG
	Reverse: CTGATGAGAGGGAGGCCATT
IL-1 β	Forward: CCAGCTTCAAATCTCACAGCAG
	Reverse: CTTCTTTGGGTATTGCTTGGGATC
β -actin	Forward: TGCTCGGGACGTTACAAC
	Reverse: GAGAATAAAGCAACTGCACAAACAA

Supplementary Table S2. The steatosis scores among different groups of mice.

Group	Score
Control	0
HDF	2.29 \pm 0.27
HDF + metformin	1.38 \pm 0.42
HDF + PGG	2.13 \pm 0.29
HDF + metformin + PGG	1.13 \pm 0.4 *

*: p<0.05 ; (N=10/group)