

Supplementary Materials

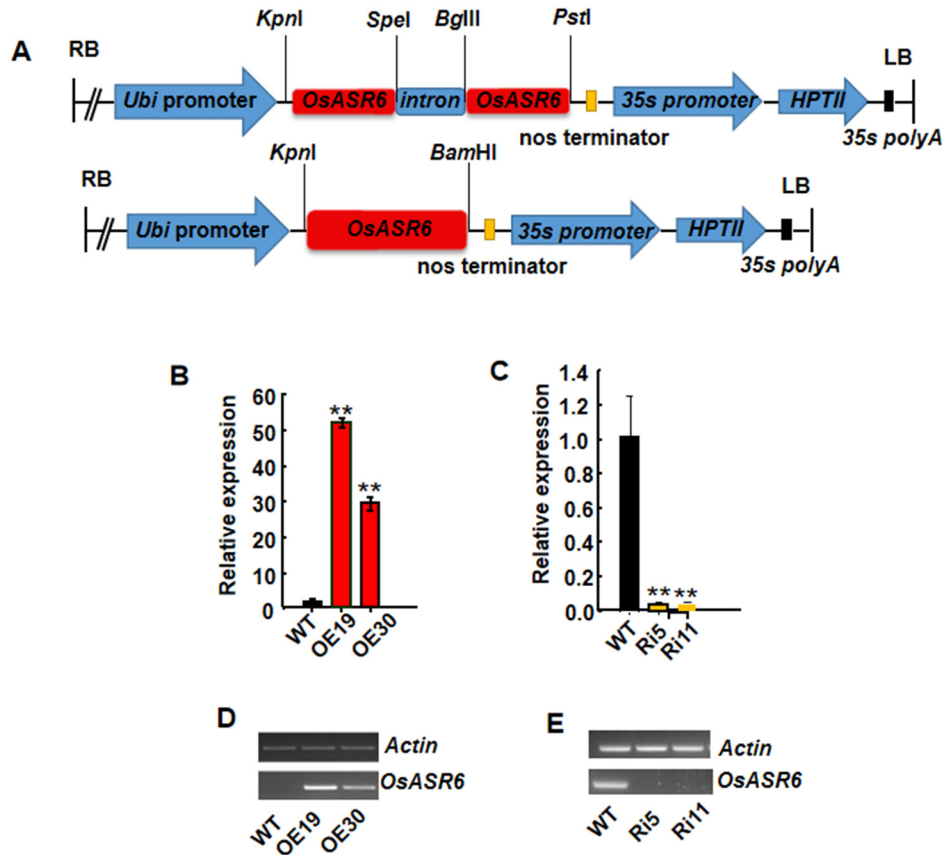


Figure S1. Plasmid construction and expression levels of *OsASR6* in transgenic rice. (A) Schematic representation of the RNAi (up) and overexpression (down) constructs used for the transformation of *OsASR6* transgenic rice. (B) Expression levels of *OsASR6* in WT and OE plants as determined by qRT-PCR. (C) Expression levels of *OsASR6* in WT and RNAi plants as determined by qRT-PCR. (D) Expression levels of *OsASR6* in WT and OE plants as determined by RT-PCR. (E) Expression levels of *OsASR6* in WT and RNAi plants as determined by RT-PCR. Rice *Actin1* was used as an internal control. Asterisks indicate significant differences between means of WT and transgenic lines. Data represent means \pm SD. ** $p < 0.01$.

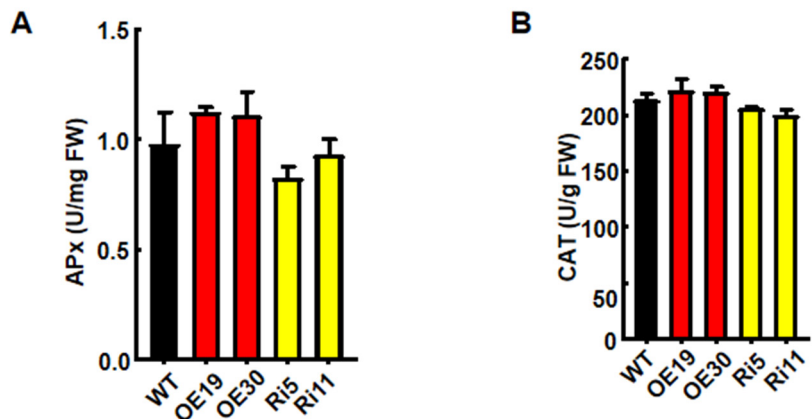


Figure S2. Analysis of APx and CAT activity in WT and *OsASR6* transgenic plants under salt treatment. (A) Apx enzyme activity, (B) CAT enzyme activity.