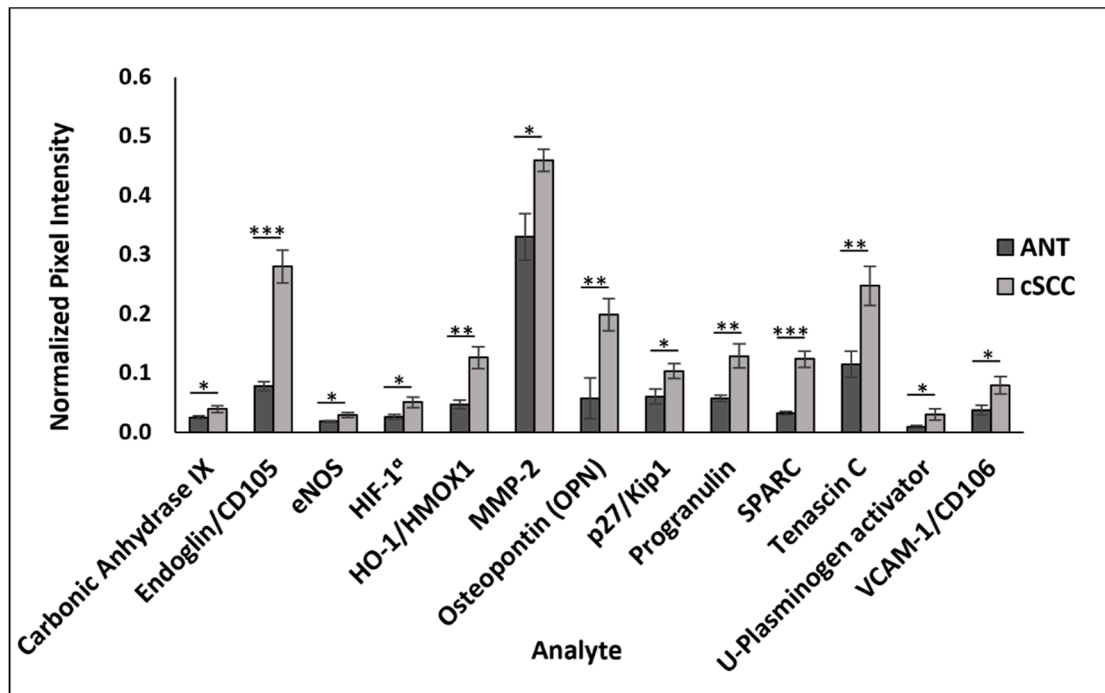
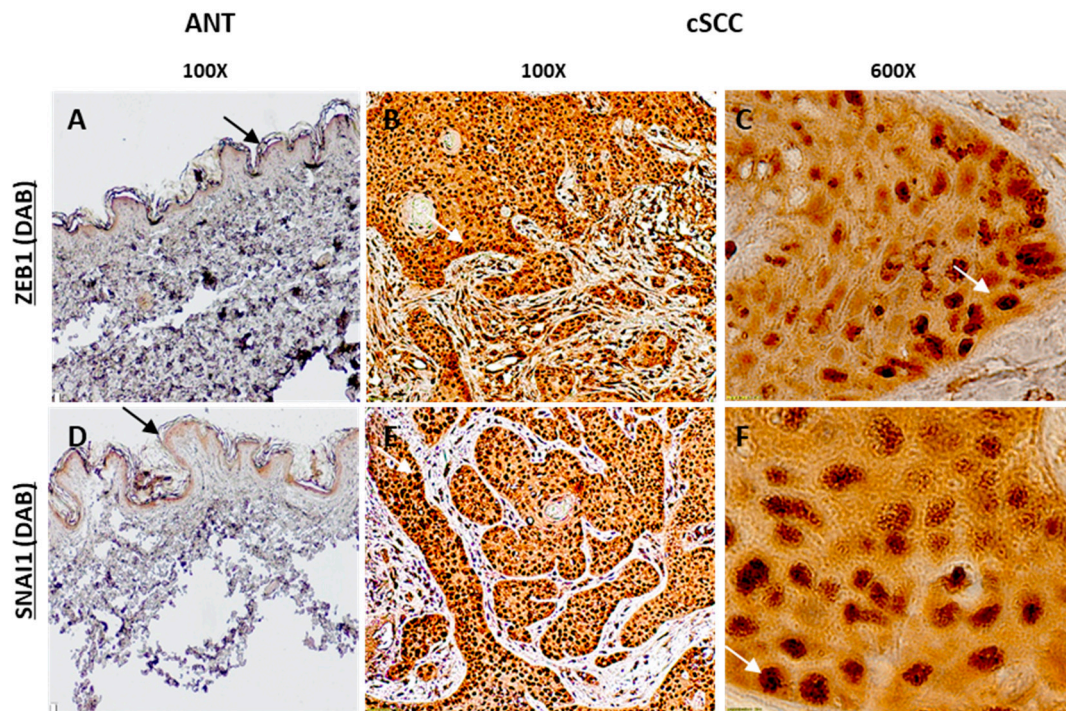


**Figure S1.** Representative dot blots showing expression of 84 oncogenic proteins from ANT and cSCC tissues.



**Figure S2.** Protein expression using a Proteome Profiler Oncogenic Array.



**Figure S3.** Immunohistochemistry of normal (ANT) and cancer (cSCC) tissues for ZEB1 and SNAIL.

**Table S1.** Demographics of patient-derived samples obtained from ALBR®.

Group	N	Diagnosis	Sex	Median Age	Location		
cSCC	74	SCCis (46); SCC (6); Invasive (22)	Male (43); Female (31)	69	Face, Scalp & Neck (51)	Trunk&Shoulder (10)	Extremities (13)
ANT	71	SCCis (44); SCC (5); Invasive (22)	Male (40); Female (31)	69	Face, Scalp & Neck (42)	Trunk&Shoulder (11)	Extremities (18)