

Figure S1. Heatmap profile of CTCF peaks relative to the transcription start sites (TSS) considering a ± 3 kb region for each pool with two samples each (considering chromosomes 1–29). Blue color intensity reflects the level of peak enrichment, and black lines are missing data. BW: before weaning. AW: after weaning.

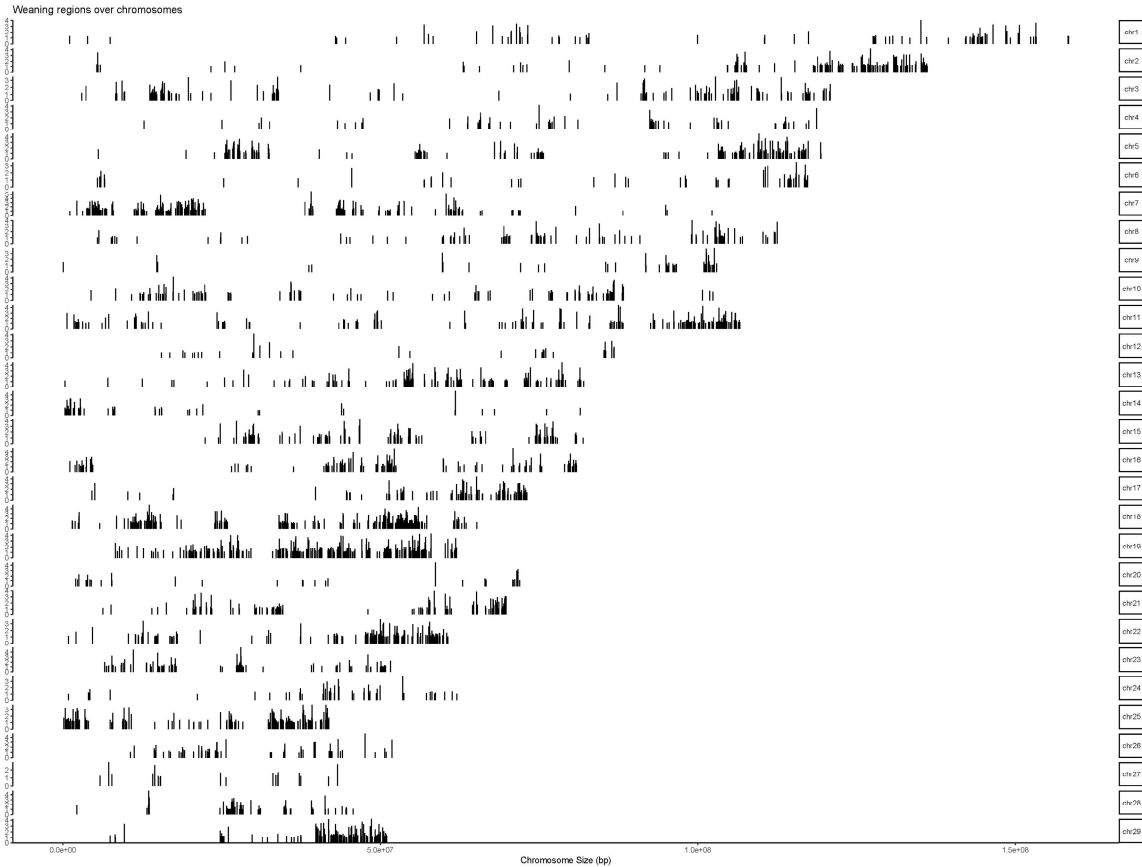


Figure S2. Chromosomal distribution of 7401 differentially CTCF-binding sites after weaning (considering bovine chromosomes 1–29).

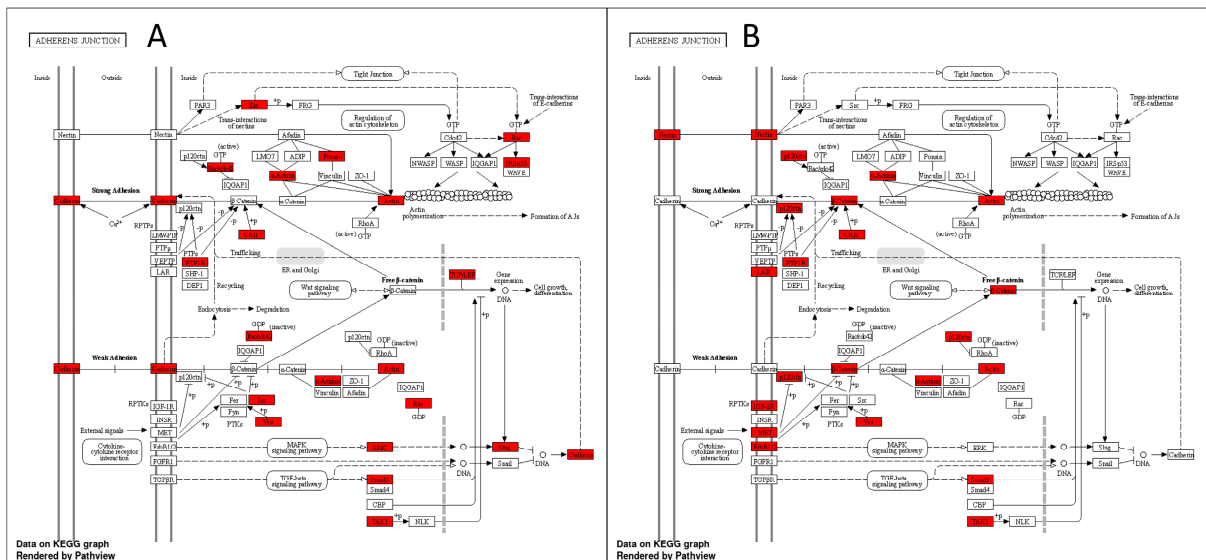


Figure S3. KEGG adherens junction pathway obtained from the (A) induced and (B) repressed differentially CTCF-binding sites (DCBS). Genes from the DCBS are highlighted in red.

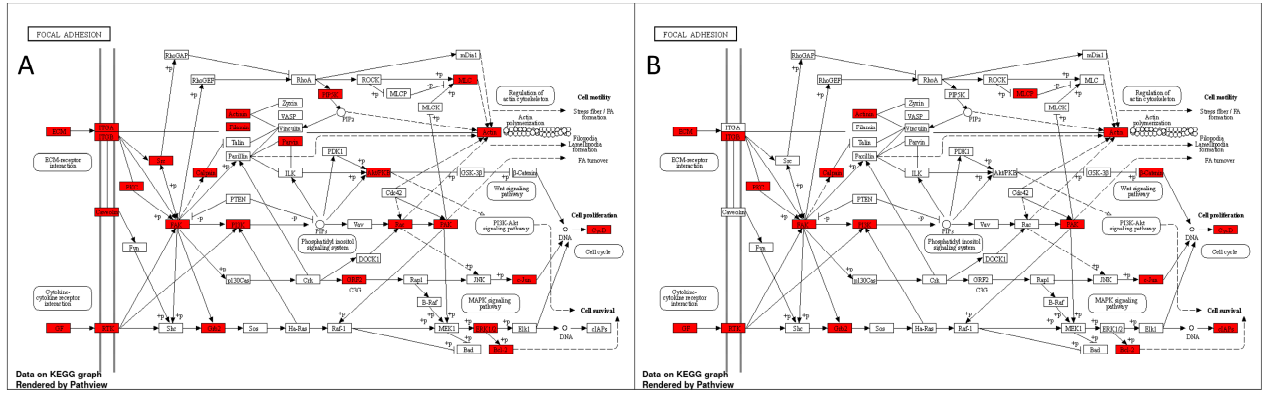


Figure S4. KEGG focal adhesion pathway obtained from the (A) induced and (B) repressed differentially CTCF-binding sites (DCBS). Genes from the DCBS are highlighted in red.

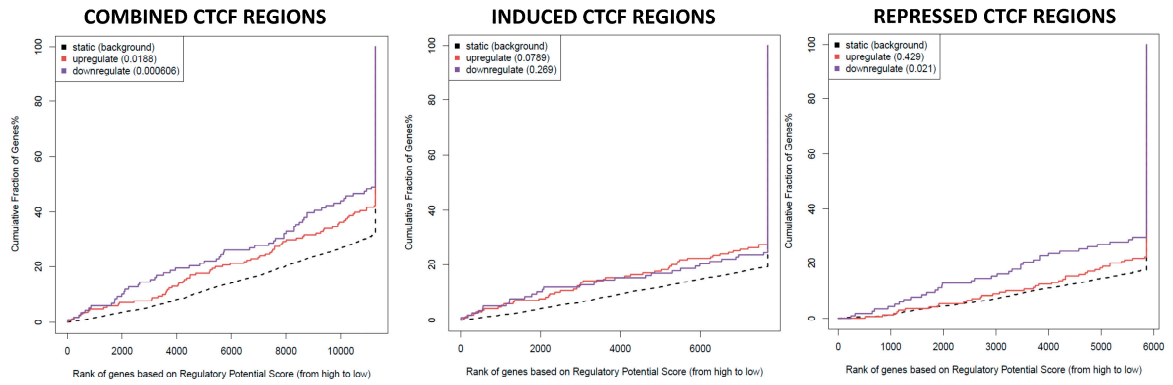


Figure S5. BETA activating and repressive function prediction of differentially CTCF-binding sites. The red line represents the up-regulated genes, the purple line represents the down-regulated genes, and the dashed line represents background genes with no differentially expressed genes. The p -values (inside the box) represent the significance of the difference between the up/down groups compared with the background genes by the Kolmogorov-Smirnov test.

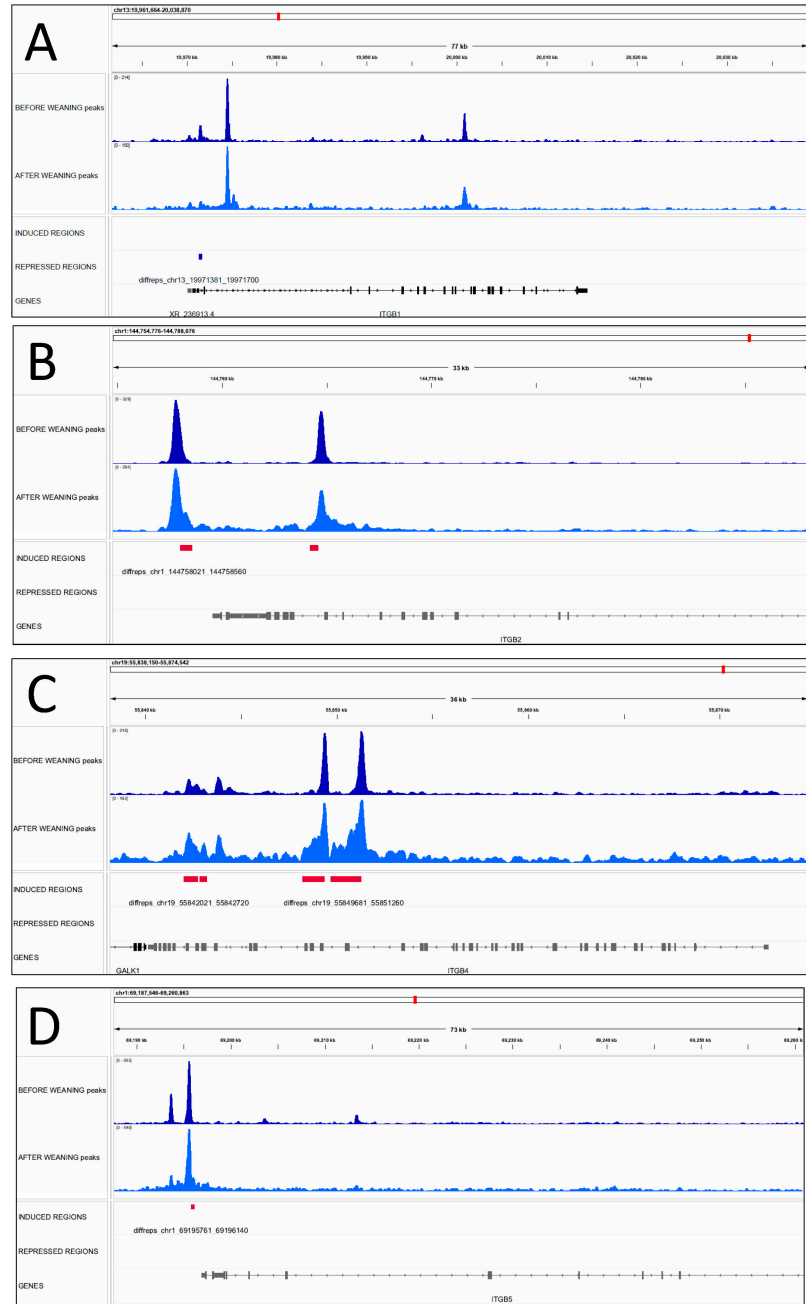


Figure S6. Integrative genomics viewer (IGV) screenshot of CTCF peaks (BW and AW) and the induced and repressed differentially CTCF-binding sites after weaning for the (A) *ITGB1* gene, (B) *ITGB2* gene, (C) *ITGB4* gene, and (D) *ITGB5* gene. The X-axis represents the chromosomal location with the size bar given in kb.

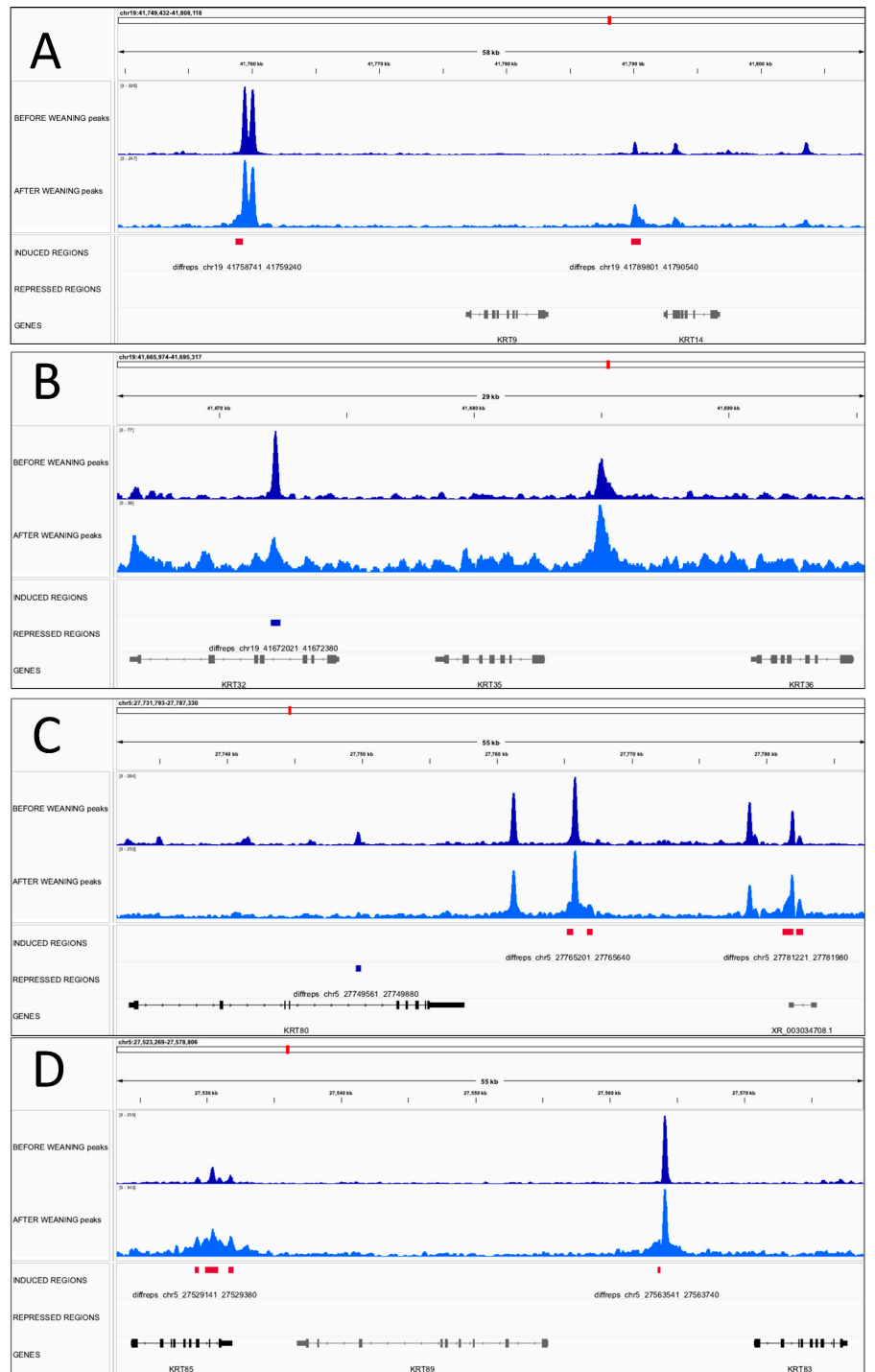


Figure S7. Integrative genomics viewer (IGV) screenshot of CTCF peaks (BW and AW) and the induced and repressed differentially CTCF-binding sites after weaning for the *keratin* genes - (A) *KRT9* and *KRT14*, (B) *KRT32*, *KRT35*, and *KRT36*, (C) *KRT80*, and (D) *KRT83*, *KRT85*, and *KRT89* genes. The X-axis represents the chromosomal location with the size bar given in kb.