

Supplementary Materials:

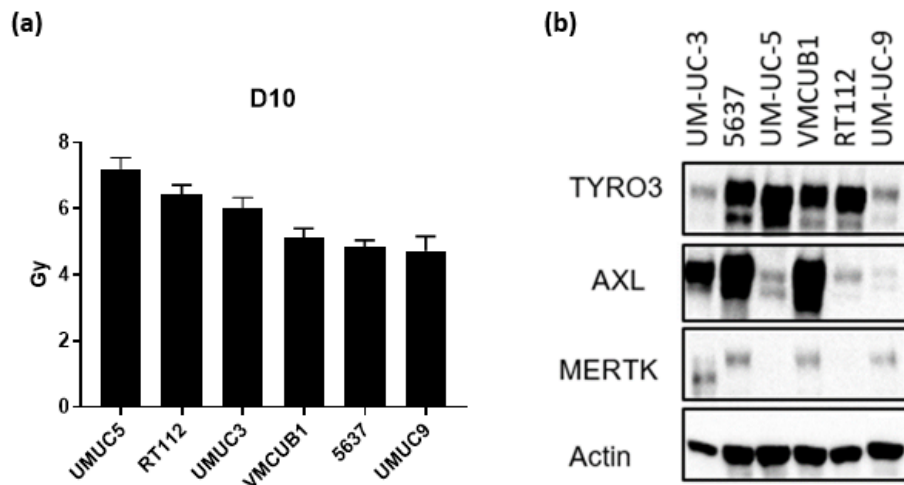


Figure S1. Radiosensitivity and TAM expression in BCa cell lines. D₁₀ values of 6 BCa cell lines (a) and TAM receptor expression at protein level in BCa cell lines (b).

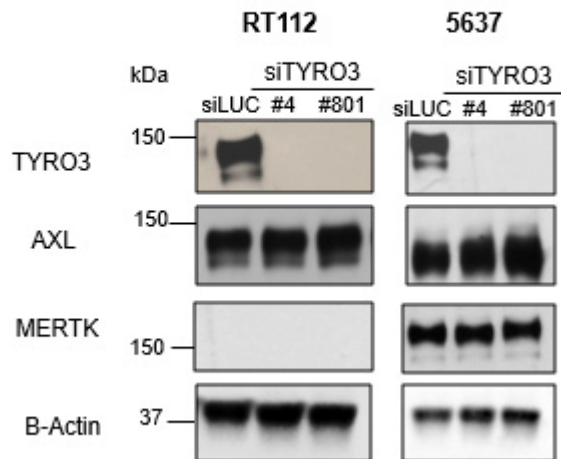


Figure S2. TAM expression levels following TYRO3 downregulation. siTYRO3#4 and siTYRO3#801 were used to downregulate TYRO3 and its impact on other TAM receptor expression was evaluated.

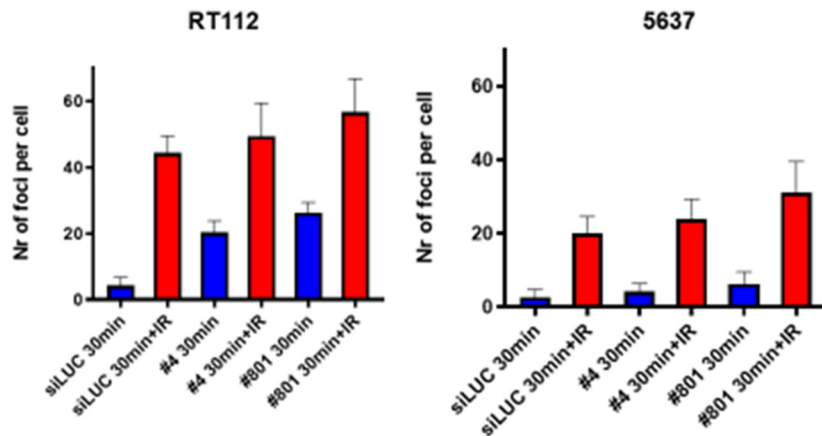


Figure S3. γ H2AX foci 30 min after 2Gy or mock irradiation in RT112 and 5637 cell lines. A representative experiment is shown.

Table S1. Sequences of siRNAs used in the study.

siRNA	Exons targeted	Manufacturer	Reference	Sense strand sequence	Antisense strand sequence
siLUC (Luciferase GL2 siRNA)		Qiagen	ID: 1022070	5'- CGUACGCGGAAUACUUCG ATT-3'	5'- UCGAAGUAUUCGCGGUAC GTT-3'
TYRO3 siRNA #1	3/4	Thermo Fisher Scientific	AM51331 ID: 802	5'- GGUGUGCCAUUUUUCACA GTT-3'	5'- CUGUGAAAAAUGGCACAC CTT-3'
TYRO3 siRNA #4	10	Qiagen	SI03096212	5'- GCUUCGAAAGAGACGGAA ATT-3'	5'- UUUCCGUCUCUUUCGAAG CAG-3'
TYRO3 siRNA #801	19	Thermo Fisher Scientific	AM51331 - 801	5'- GGUCUGAAUCUUCACCAU CTT-3'	5'- GAUGGUGAAGAUUCAGAC CTG-3'

Table S3. An overview of the percentage (%) cell in G2/M Phase for RT112 cell line.

	siLUC 0Gy	siLUC 6 Gy	siTYRO3 #4 0Gy	siTYRO3 #4 6Gy	siTYRO3 #801 0Gy	siTYRO3 #801 6Gy
%	8.940	17.57	8.750	35.00	10.22	21.44
S.D	1.422	2.136	1.527	4.610	2.771	0.2326

Table S4. An overview of the percentage (%) cells in G2/M Phase for 5637 cell line.

	siLUC 0Gy	siLUC 6 Gy	siTYRO3 #4 0Gy	siTYRO3 #4 6Gy	siTYRO3 #801 0Gy	siTYRO3 #801 6Gy
%	13.48	20.48	14.58	50.74	13.33	43.41
S.D	2.861	5.254	5.550	6.335	0.8656	6.761