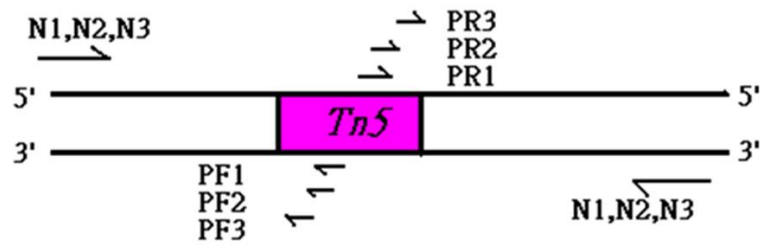
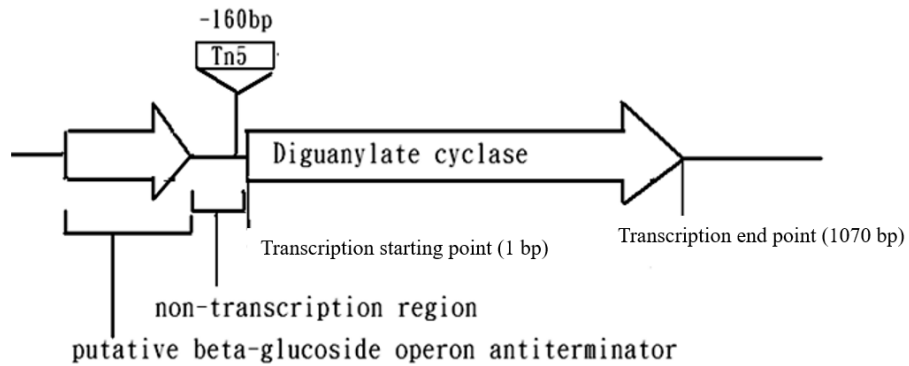


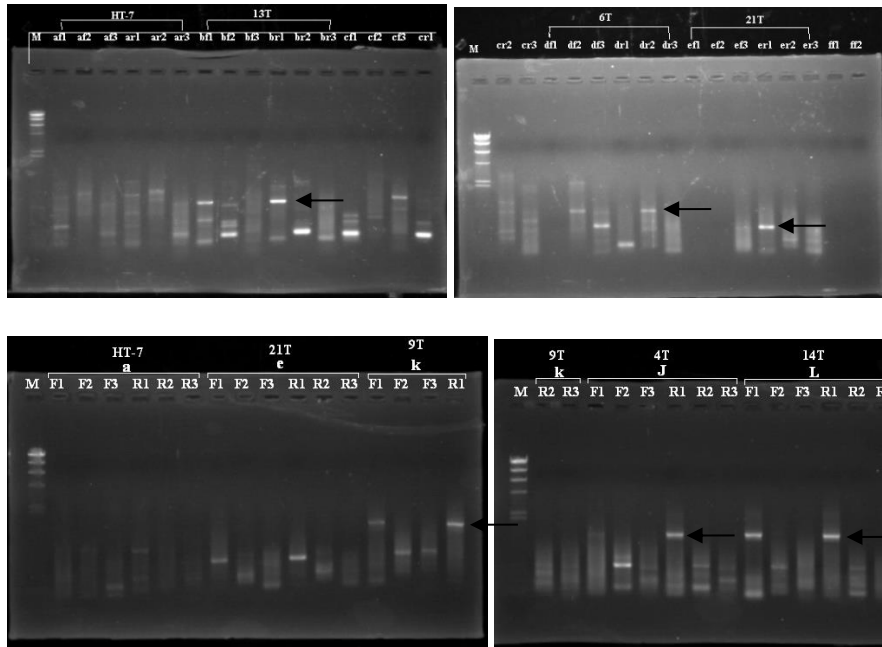
A



B



C



**Figure S1. The Thermal Asymmetric Interlaced PCR (TAIL-PCR) and the results from the process.** A. Schematic diagram of the TAIL-PCR process. Three contiguous specific primers from the Tn5 insert end sequence are used to amplify unknown nucleotides, with the same arbitrary primer used in each reaction.; B. The Tn5 insertion map of Diguanylate Cyclase gene. Tn5 has been inserted into the Diguanylate Cyclase gene, which has a total length of 1070bp and Tn5 has been put into -160bp.; (c) Results from the TAIL-PCR.