

Supplementary document

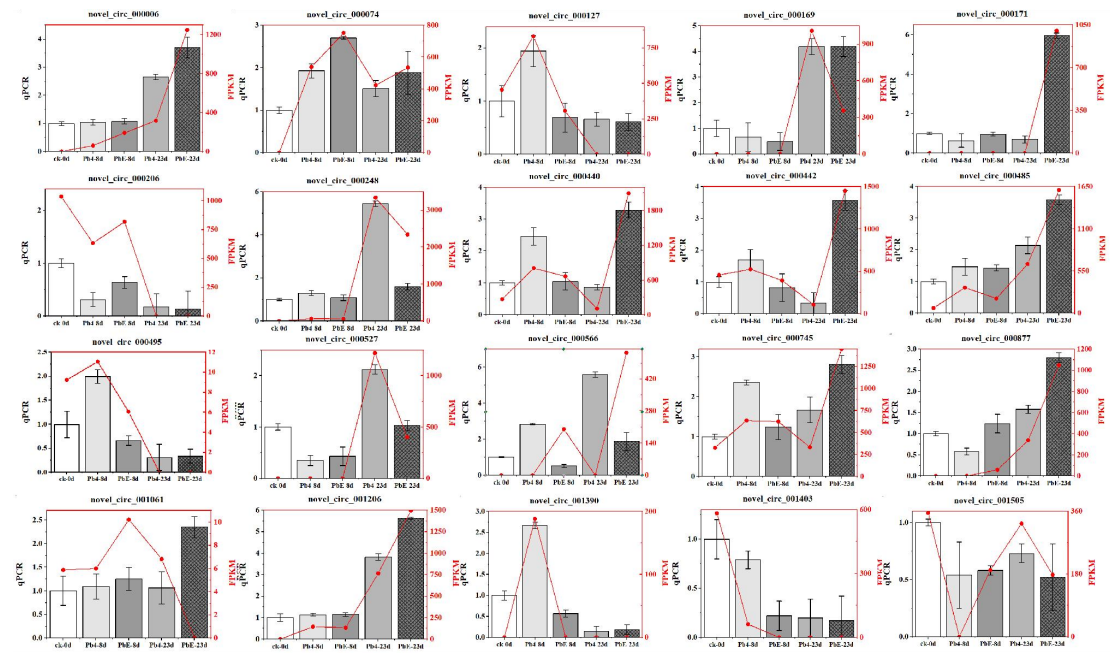


Figure S1. Quantitative real-time PCR validation for RNA-seq.

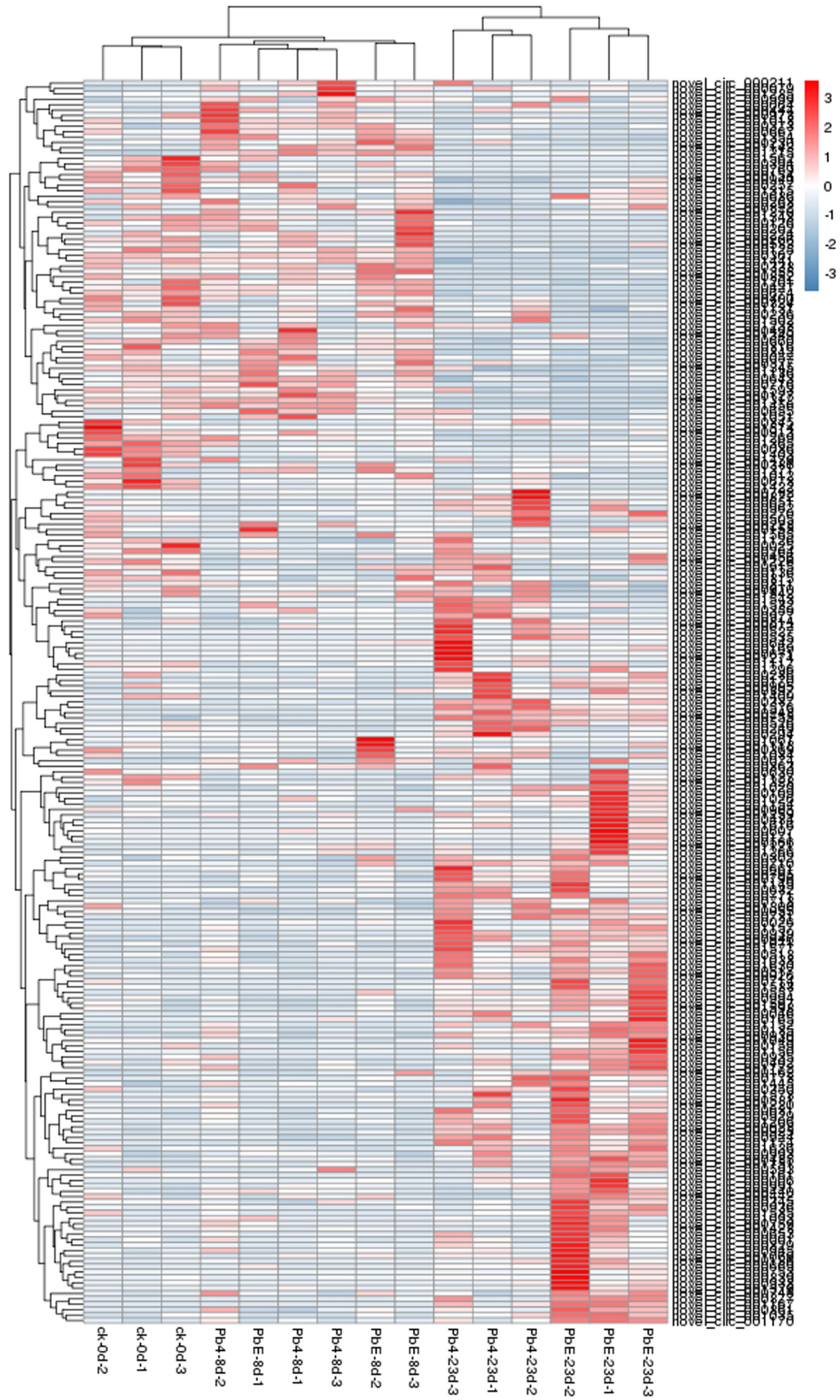


Figure S2. Heat map and clustering of circRNA expression profiles in different samples.

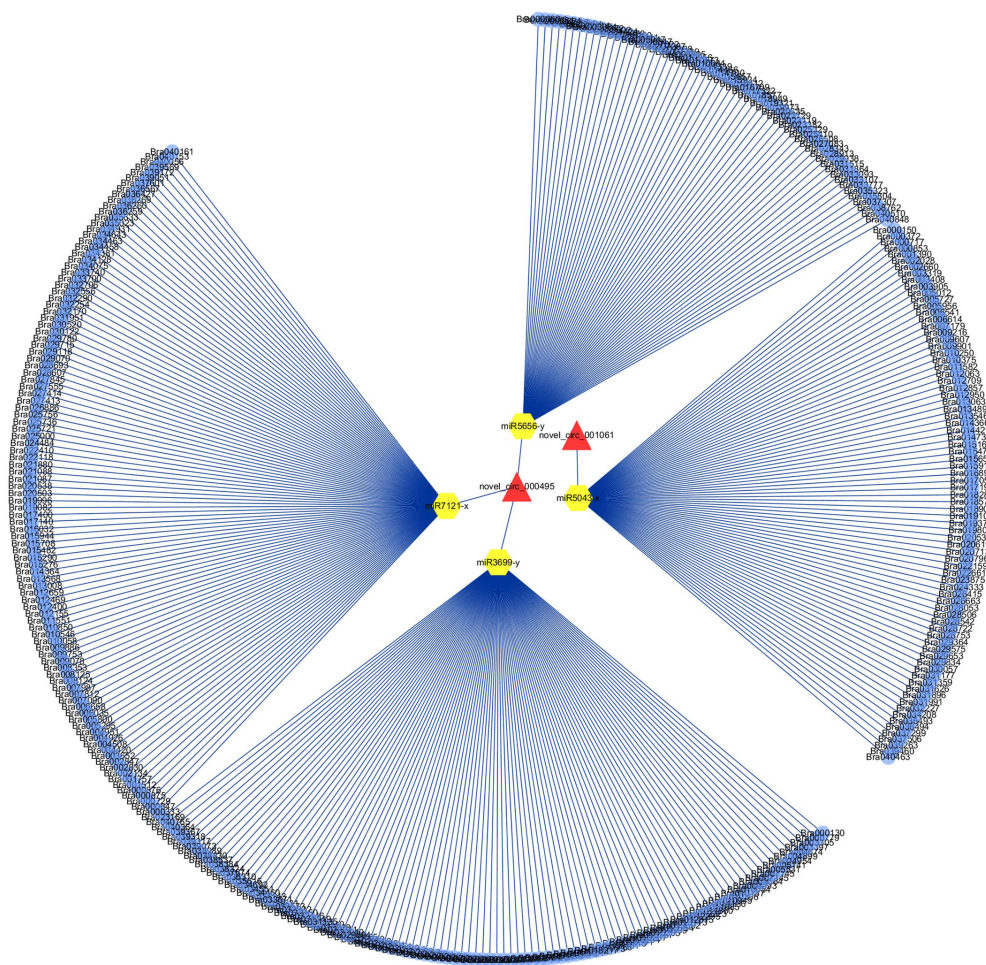


Figure S3. View of the circRNA – miRNA – mRNA triple network *Brassica rapa*. The circRNAs, miRNAs, and mRNAs are indicated as yellow hexagons, red triangles, and blue diamonds, respectively.

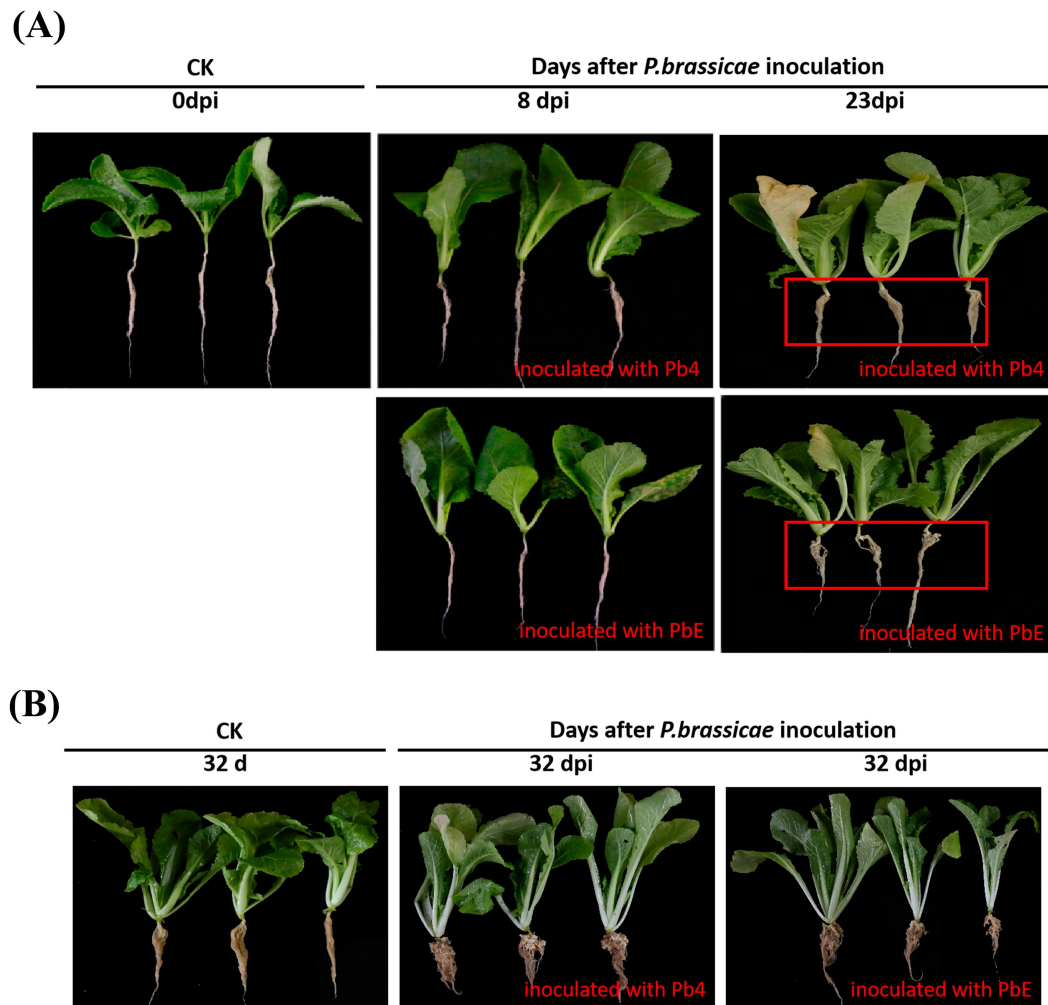


Figure S4. (A) Phenotype of roots in ‘BJN 222’ plants infected with *P. brassicae*. (B) Phenotype of roots in ‘BJN 3-2’ plants infected with *P. brassicae*.