

Supplemental material

Figure S1. The H&E staining of heart, lung and kidney tissues.

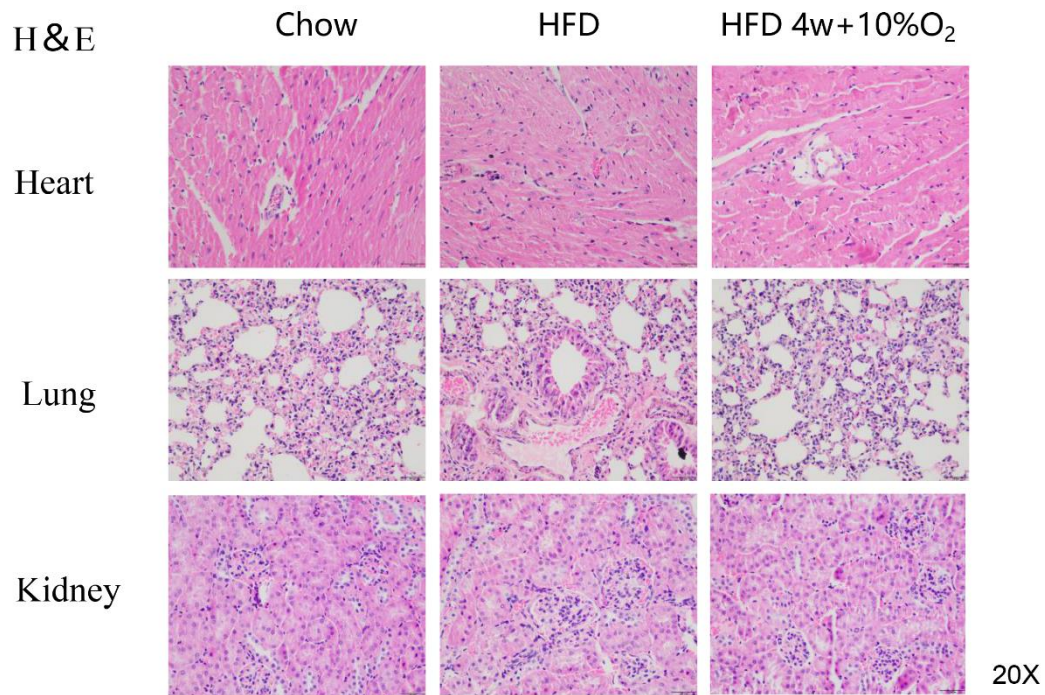


Table S1. RT-PCR primers

18S rRNA-Forward	5'-GCAATTATTCCCCATGAACG -3'
18S rRNA-Reverse	5'-GGCCTCACTAAACCATCCAA-3'
SCD1-Forward	5'-TTCTTGCGATACTCTGGTGC-3'
SCD1-Reverse	5'-CGGGATTGAATGTTCTTGTCGT-3'
Cpt1a-Forward	5'-CTCCGCCTGAGCCATGAAG-3'
Cpt1a-Reverse	5'-CACCAGTGATGATGCCATTCT-3'
PGC1 $\alpha$ -Forward	5'-TATGGAGTGACATAGAGTGTGCT-3'
PGC1 $\alpha$ -Reverse	5'-CCACTTCAATCCACCCAGAAAG-3'
Atgl-Forward	5'-GGATGGCGGCATTTTCAGACA-3'
Atgl-Reverse	5'-CAAAGGGTTGGGTTGGTTCAG-3'
PPAR $\alpha$ -Forward	5'-TTCTTGCGATACTCTGGTGC-3'
PPAR $\alpha$ -Reverse	5'-CGACAGACAGGCACTTGTGAAA-3'
UCP1-Forward	5'-AGGCTTCCAGTACCATTAGGT-3'
UCP1-Reverse	5'- CTGAGTGAGGCAAAGCTGATTT-3'
ADR3-Forward	5'- ACTTGGTAGTGGGACTCCTCG T -3'
ADR3-Reverse	5'- TGCTGGCAGTTACAC AGAGC -3'
arginase-Forward	5'- CTCCAAGCCAAAGTCCTTAGAG -3'

---

arginase -Reverse	5'- AGGAGCTGTCATTAGGGACATC -3'
CD206 -Forward	5'- TGGAAGAAGAAGTAGCCTATC -3'
CD206 -Reverse	5'- TGGAGTAGTGGTTGGAGAA -3'
UCP2--Forward	5'- ATGGTTGGTTTCAAGGCCACA-3'
UCP2--Reverse	5'-CGGTATCCAGAGGGAAAGTGAT-3'
adiponectin-Forward	5'-TGTCCTCTTAATCCTGCCCA-3'
adiponectin-Reverse	5'-CCAACCTGCACAAGTTCCCTT-3'
C/EBP-Forward	5'-CAAGAACAGCAACGAGTACCG-3'
C/EBP-Reverse	5'-GTCACTGGTCAACTCCAGCAC-3'

---