

Supplementary Material

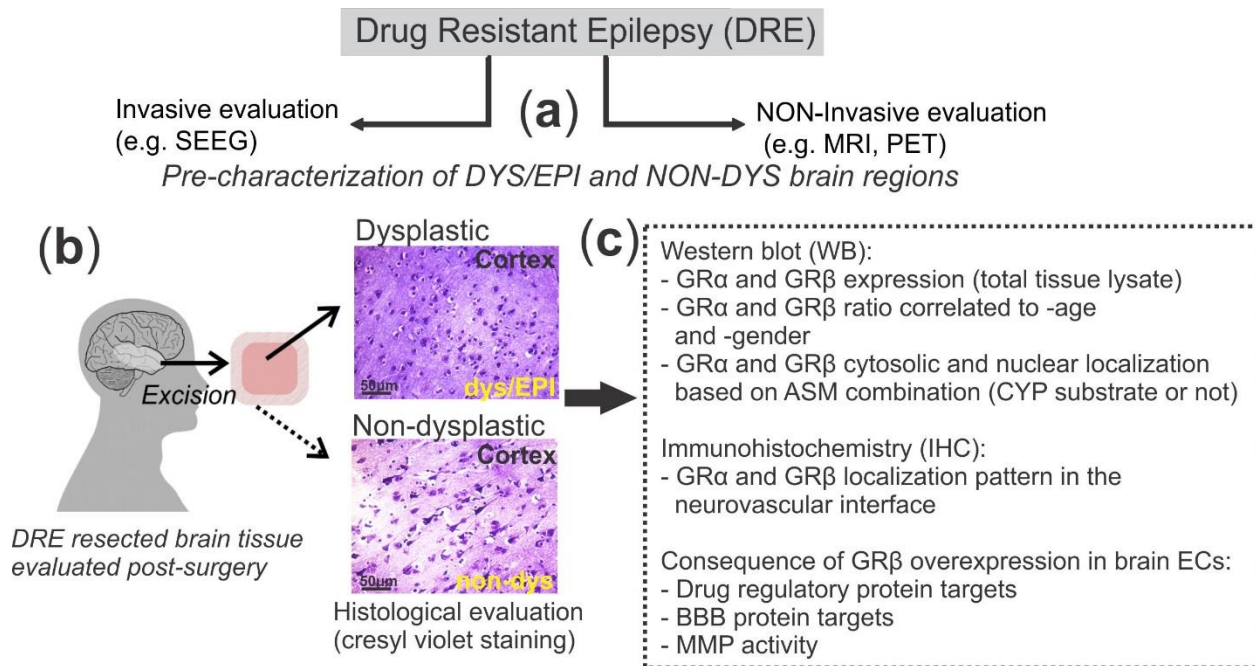
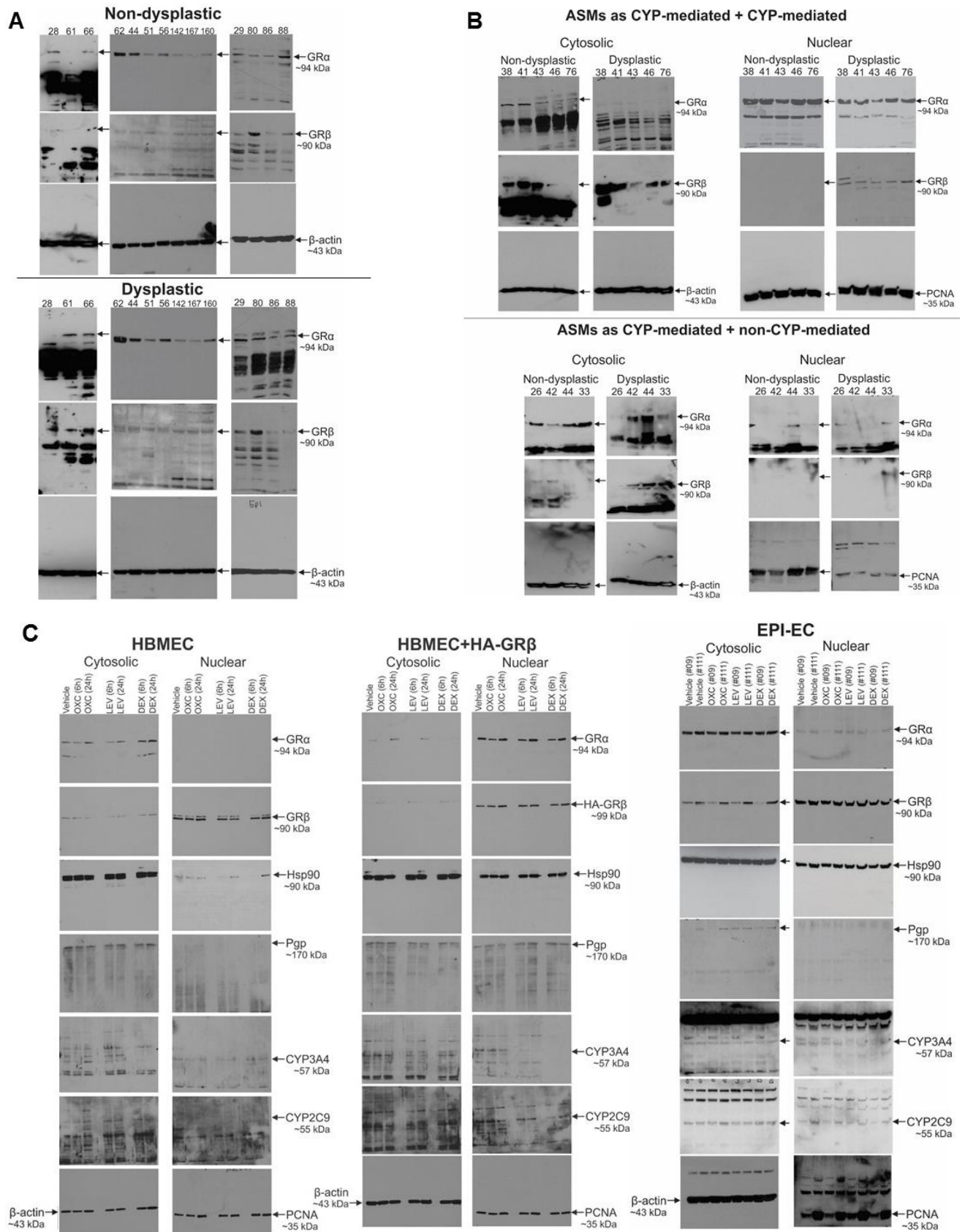


Figure S1. Experimental design. **(a)** The pre-operative characterization performed independently of the project by physicians allows for determination of dysplastic and non-dysplastic regions from the resected brain tissue. **(b)** These tissues were then characterized by histopathological staining post-resective surgery and were **(c)** used for evaluation of various endpoints for this study.



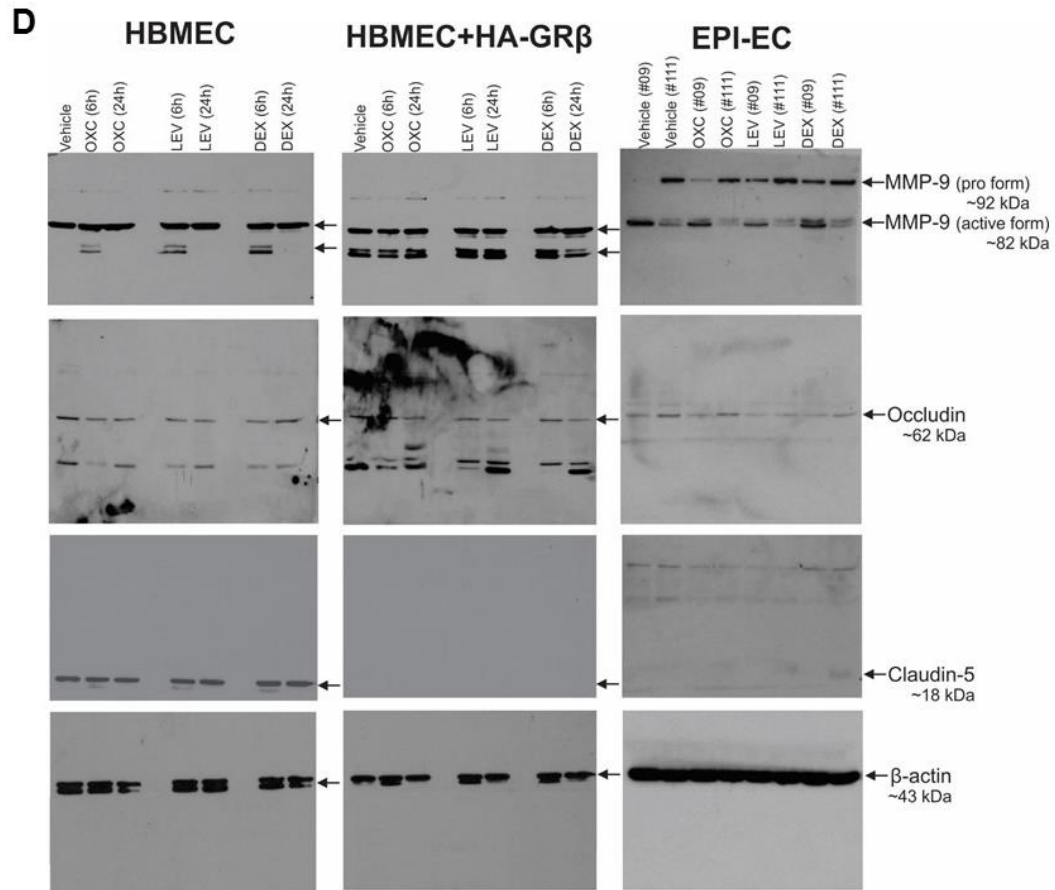


Figure S2. Full representative western blots.

Table S1. List of antibodies used for immunohistochemistry (IHC) and western blot (WB).**(a)**

Primary Antibody	Host	Concentration	Manufacturer	Catalog No.
<i>GRα</i>	Rabbit	WB: 4 μ g/10mL IHC: 1:100	Invitrogen, Thermo Fisher Scientific, Carlsbad, CA	PA1-516
<i>GRβ</i>	Rabbit	WB: 1:250 IHC: 1:100	Invitrogen, Thermo Fisher Scientific, Carlsbad, CA	PA3-514
<i>Hsp90</i>	Mouse	WB: 1:1500	Origene	TA500494
<i>MDR1/Pgp</i>	Mouse	WB: 1:100	Calbiochem	517310
<i>CYP3A4</i>	Rabbit	WB: 1:800	Abcam	ab3572
<i>CYP2C9</i>	Rabbit	WB: 1:100	Abgent	AP7881c
<i>MMP-9</i>	Mouse	WB: 1:1000	Sigma-Aldrich, St. Louis, MO	SAB5200294
<i>Claudin-5</i>	Mouse	WB: 1:500	Invitrogen, Thermo Fisher Scientific, Carlsbad, CA	35-2500
<i>Occludin</i>	Rabbit	WB: 1:250	Invitrogen, Thermo Fisher Scientific, Carlsbad, CA	71-1500
<i>NeuN</i>	Mouse	IHC: 1:500	MilliporeSigma, Burlington, MA	MAB377
<i>GFAP</i>	Mouse	IHC: 1:100	Sigma-Aldrich, St. Louis, MO	G3893
<i>β-actin</i>	Mouse	WB: 1:10,000	Sigma-Aldrich, St. Louis, MO	A1978
<i>PCNA</i>	Rabbit	WB: 1:1000	Proteintech Group	10205-2-AP

(b)

Secondary Antibody	Concentration	Manufacturer	Catalog No.
<i>FITC Donkey α-Rabbit</i>	IHC: 1:100	Jackson ImmunoResearch, West Grove, PA	711-C95-152
<i>Alexa 594 Donkey α-Mouse</i>	IHC: 1:100	Jackson ImmunoResearch	715-585-150
<i>Biotinylated Goat α-Rabbit-IgG</i>	IHC: 1:200	Vector Laboratories, Inc. Burlingame, CA	BA-1000
<i>Polyclonal Goat Anti-Rabbit IgG HRP</i>	WB: 1:2500	Dako, part of ThermoFisher Scientific Waltham, MA	P0448
<i>Polyclonal Goat Anti-Mouse IgG HRP</i>	WB: 1:2500	Dako, part of ThermoFisher Scientific Waltham, MA	P0447