

Anticoagulant oligonucleotide-peptide conjugates: identification of thrombin aptamer conjugates with improved characteristics

Vladimir B. Tsvetkov ^{2,3}, Irina V. Varizhuk ¹, Nikolay N. Kurochkin ¹, Sergei A. Surzhikov ¹, Igor P. Smirnov ², Andrey A. Stomakhin ¹, Natalia A. Kolganova ¹ and Edward N. Timofeev ^{1,*}

¹ Engelhardt Institute of Molecular Biology, Russian Academy of Sciences, 119991 Moscow, Russia;

² Federal Research and Clinical Center of Physical-Chemical Medicine, 119435 Moscow, Russia;

³ Institute of Biodesign and Complex System Modeling, Sechenov First Moscow State Medical University, 119146 Moscow, Russia

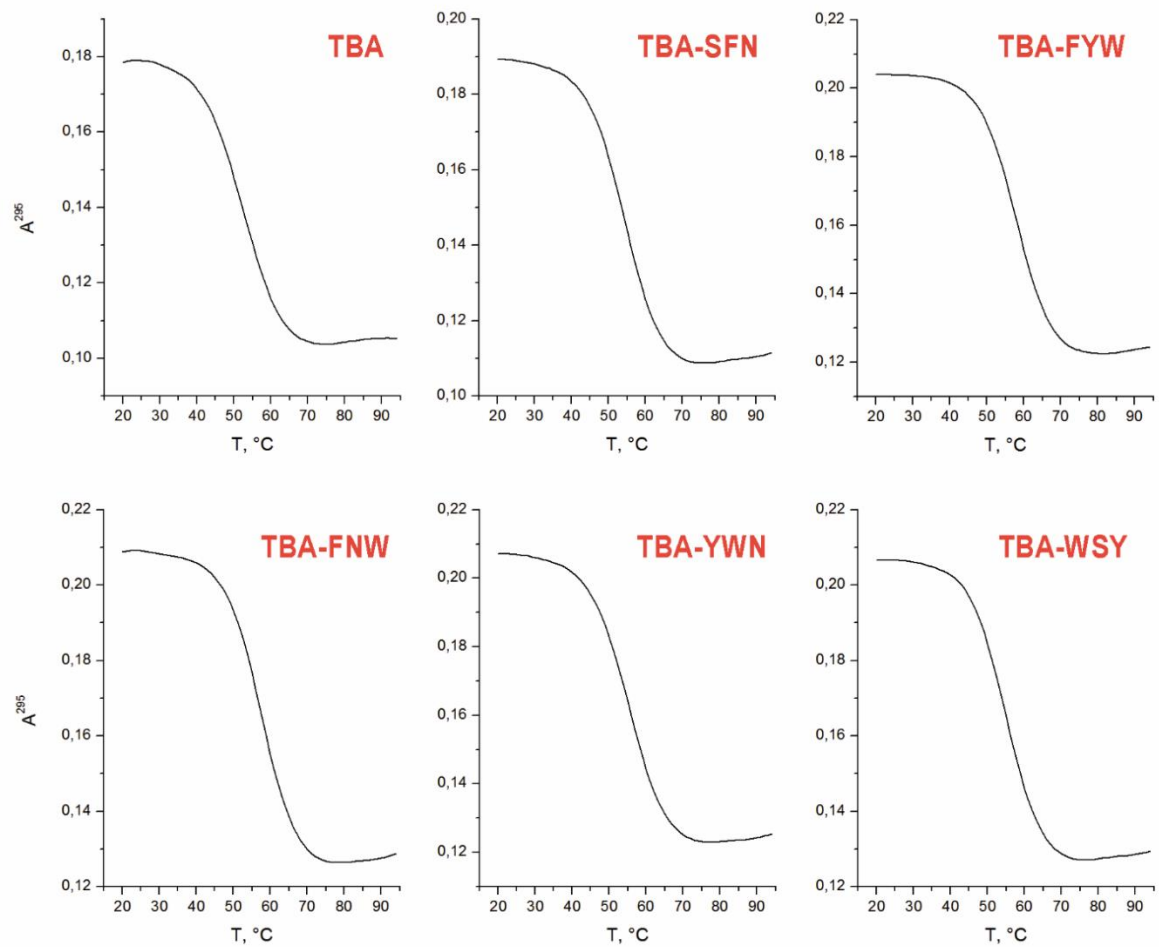


Figure S1. Melting profiles of TBA OPCs (295 nm) in 10 mM sodium cacodylate (pH 7.2) and 100 mM KCl at an oligonucleotide concentration of 5 μM

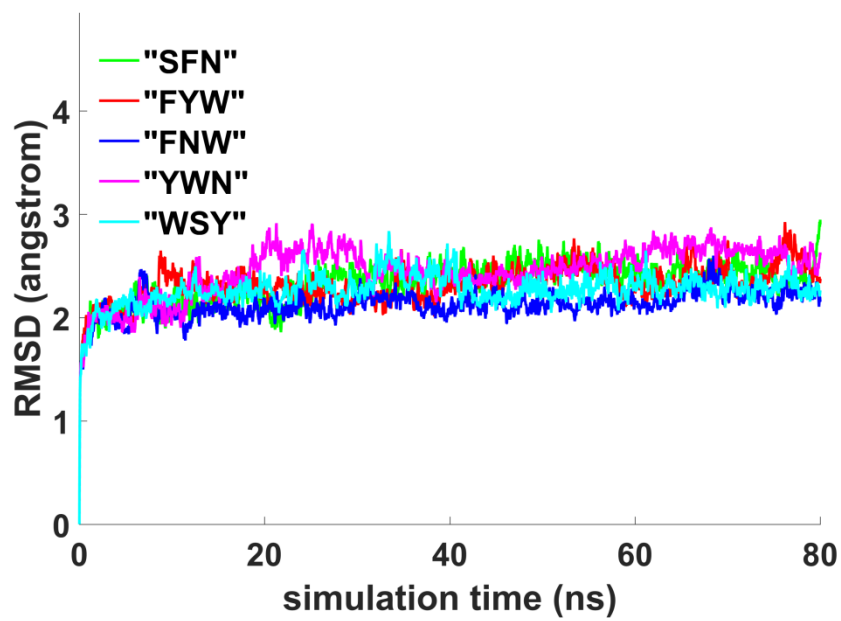


Figure S2. RMSD data for TBA-OPC complexes with thrombin.

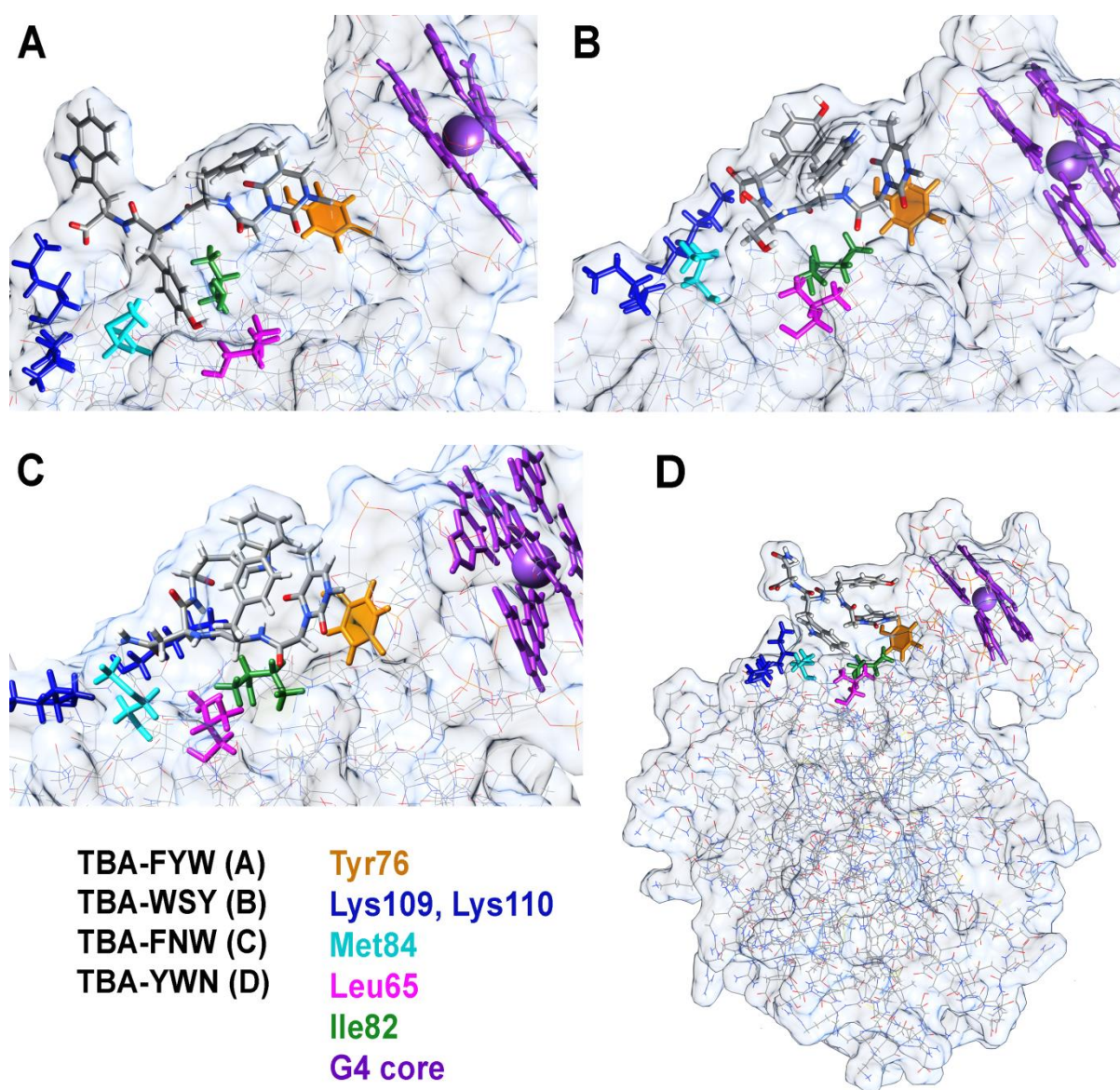


Figure S3. Snapshots of thrombin complexes with TBA-FYW, TBA-WSY, TBA-FNW, and TBA-YWN (full size) at 80 ns.

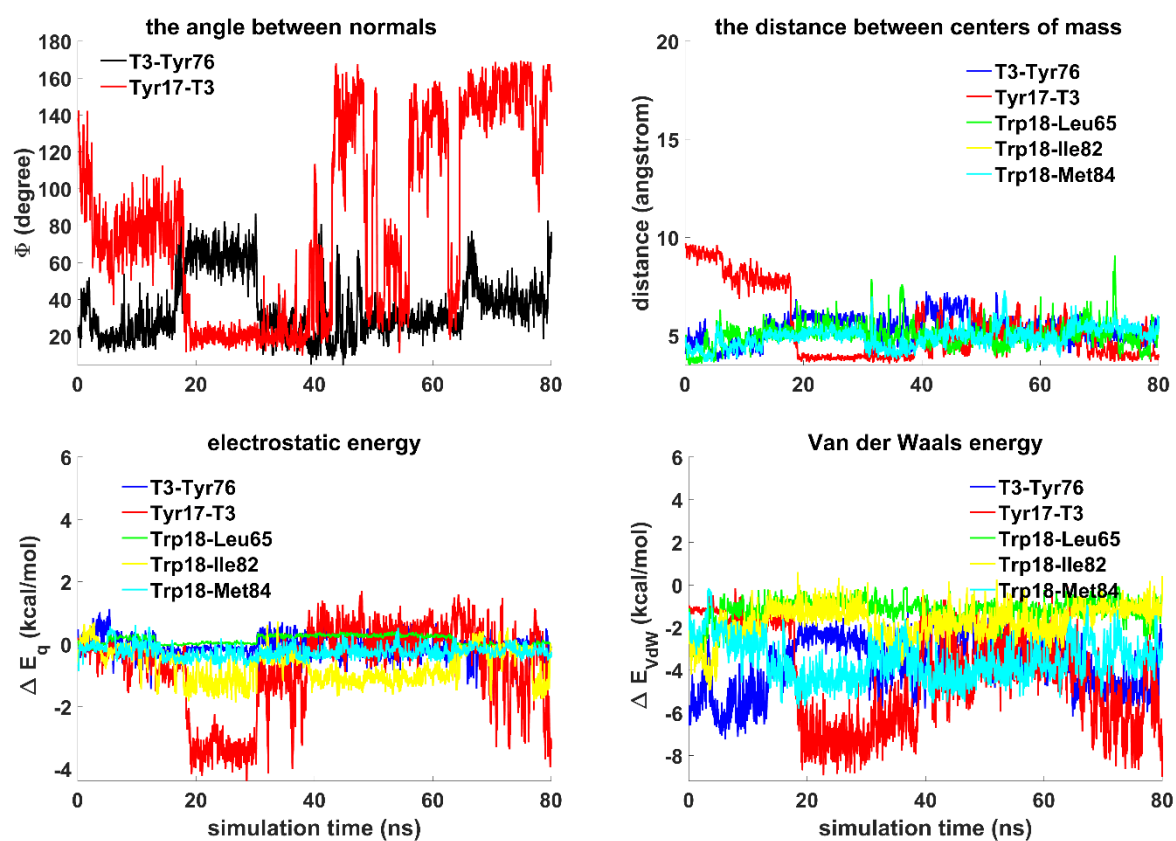


Figure S4. Geometrical parameters and energy of interaction between selected residues for TBA-YWN complex with thrombin.

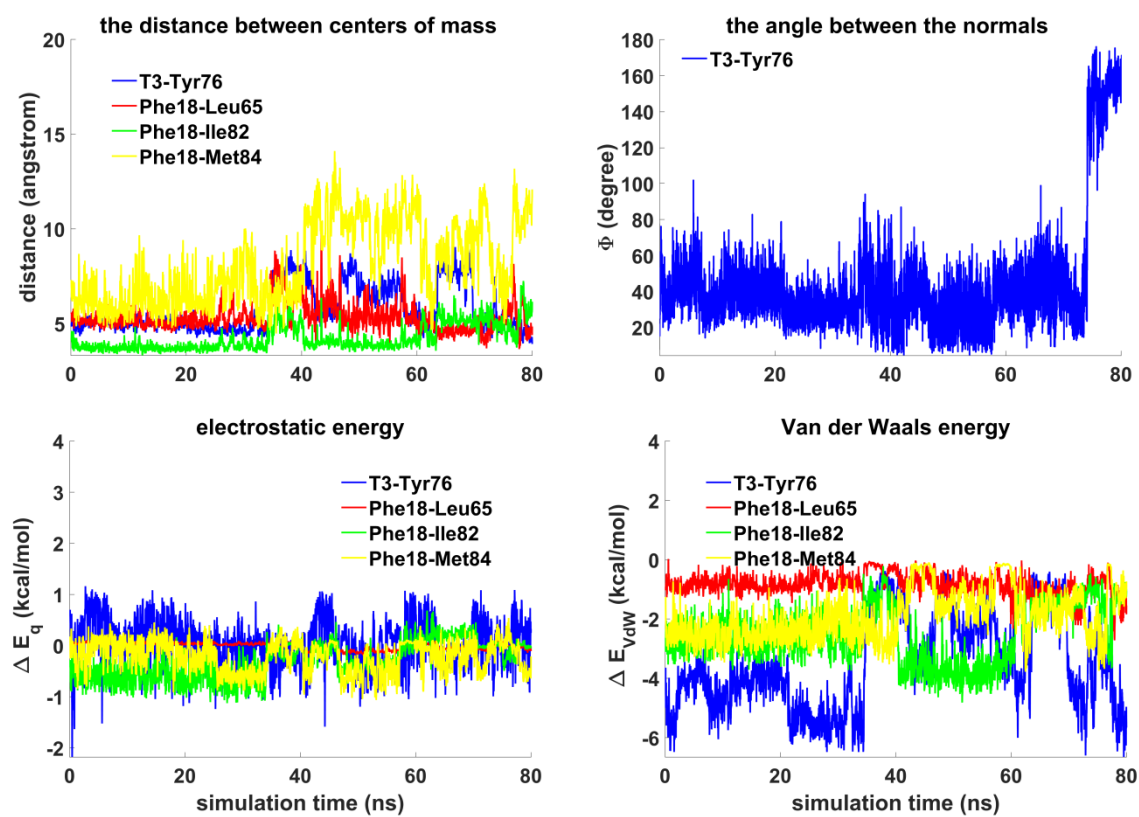


Figure S5. Geometrical parameters and energy of interaction between selected residues for TBA-SFN complex with thrombin.

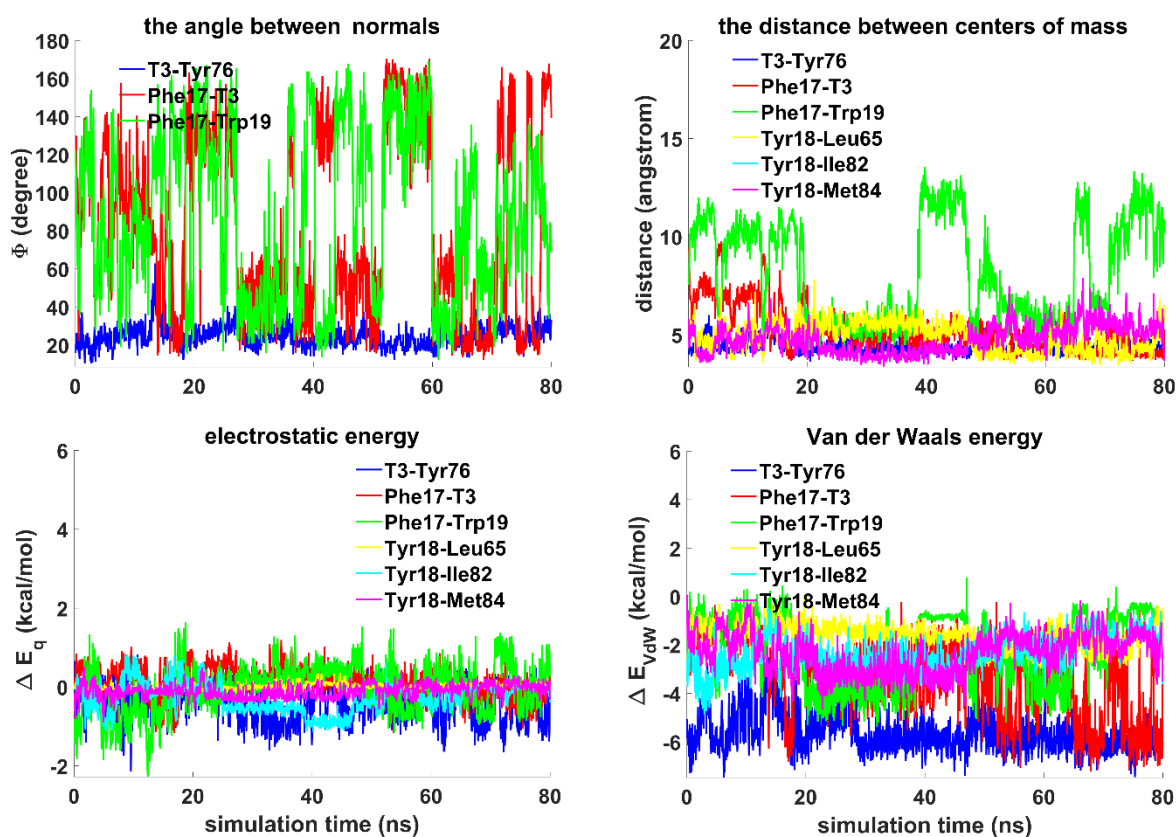


Figure S6. Geometrical parameters and energy of interaction between selected residues for TBA-FYW complex with thrombin.

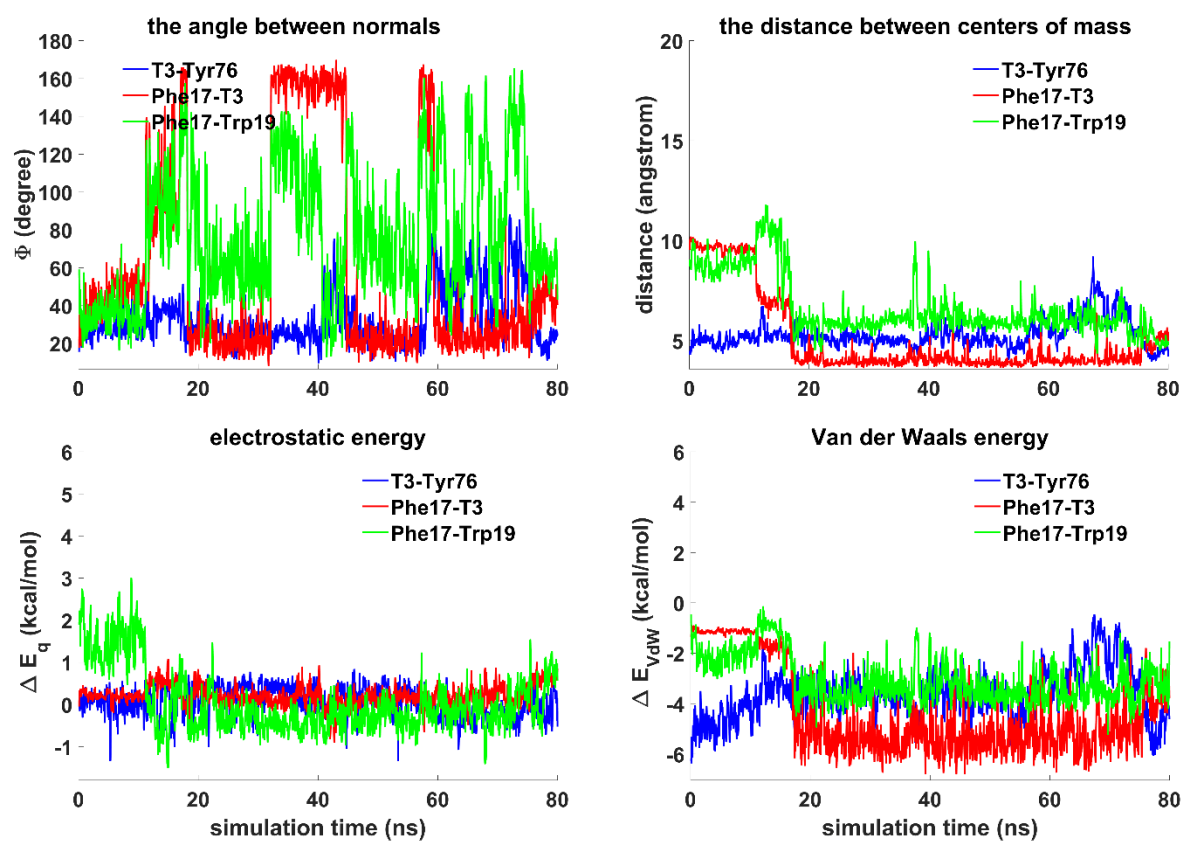


Figure S7. Geometrical parameters and energy of interaction between selected residues for TBA-FNW complex with thrombin.

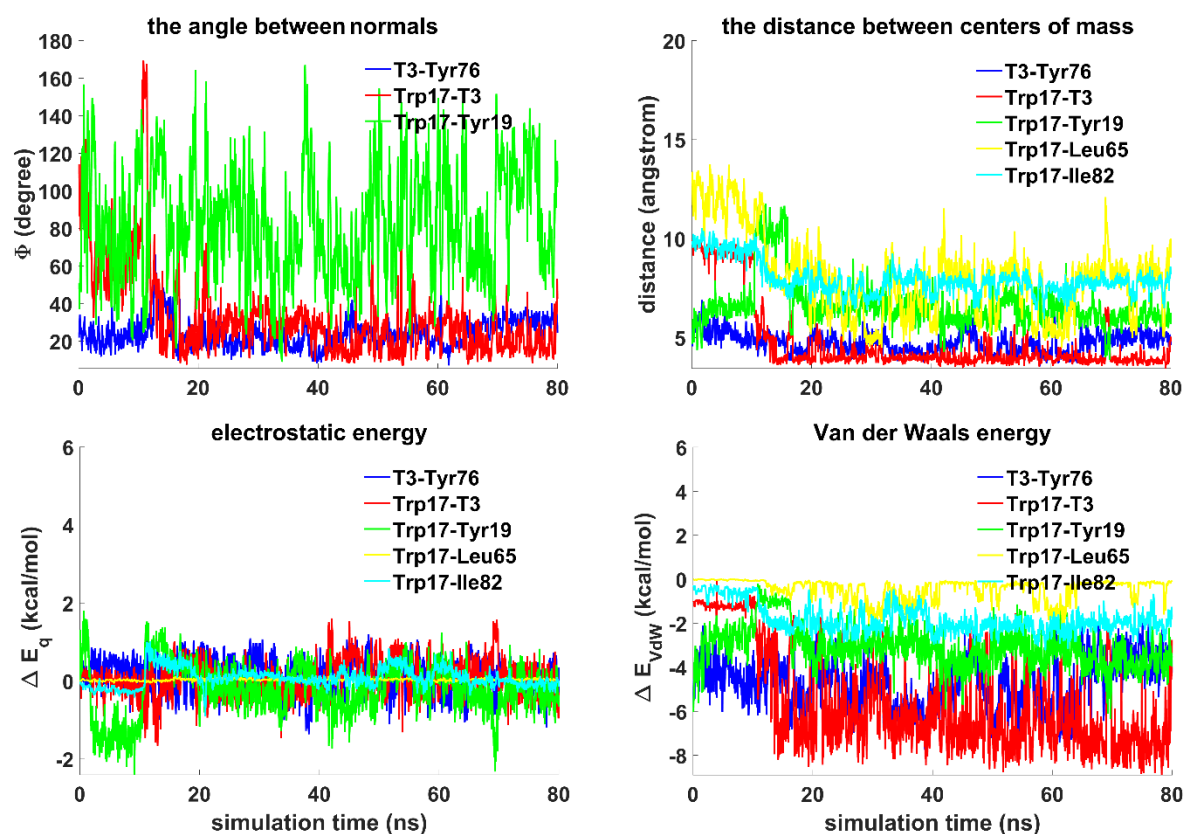
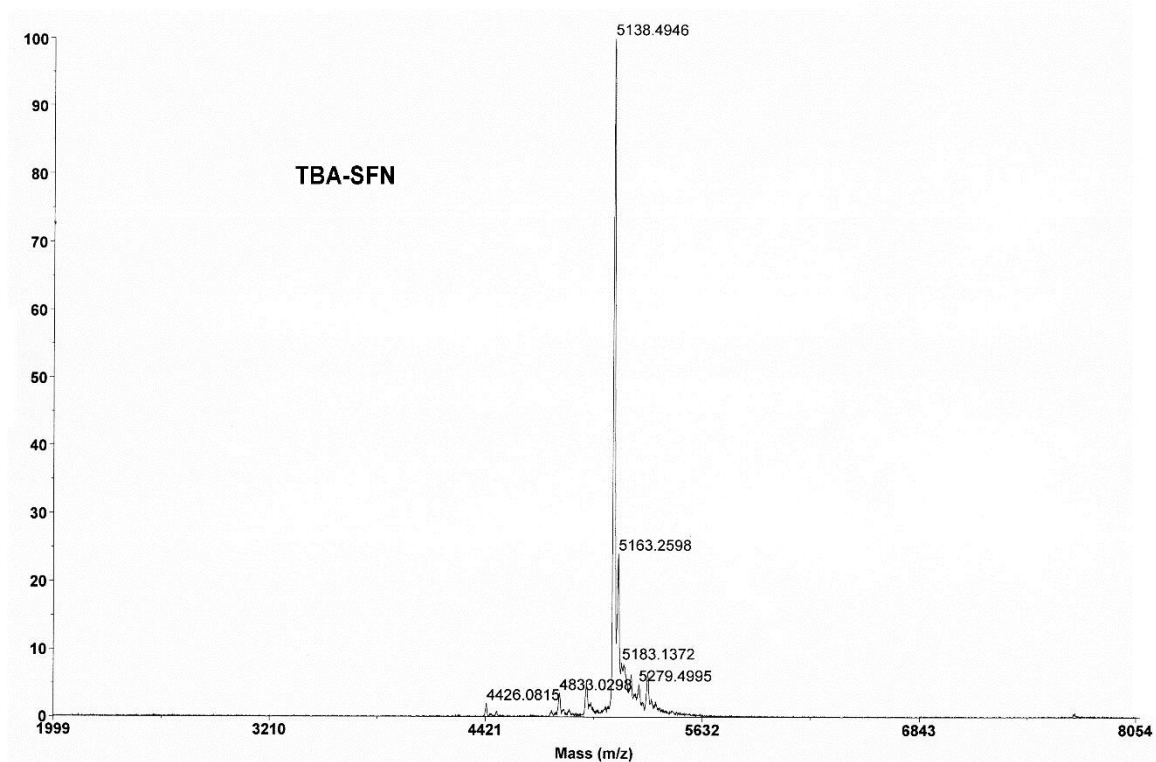
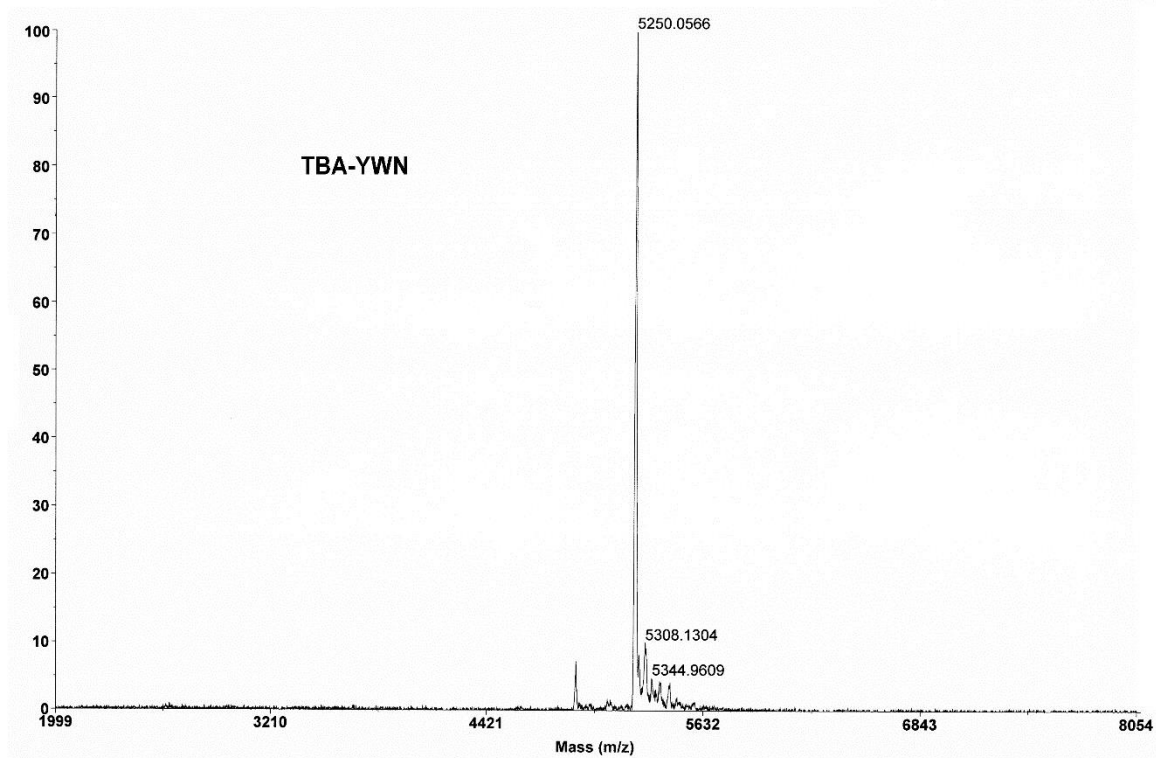
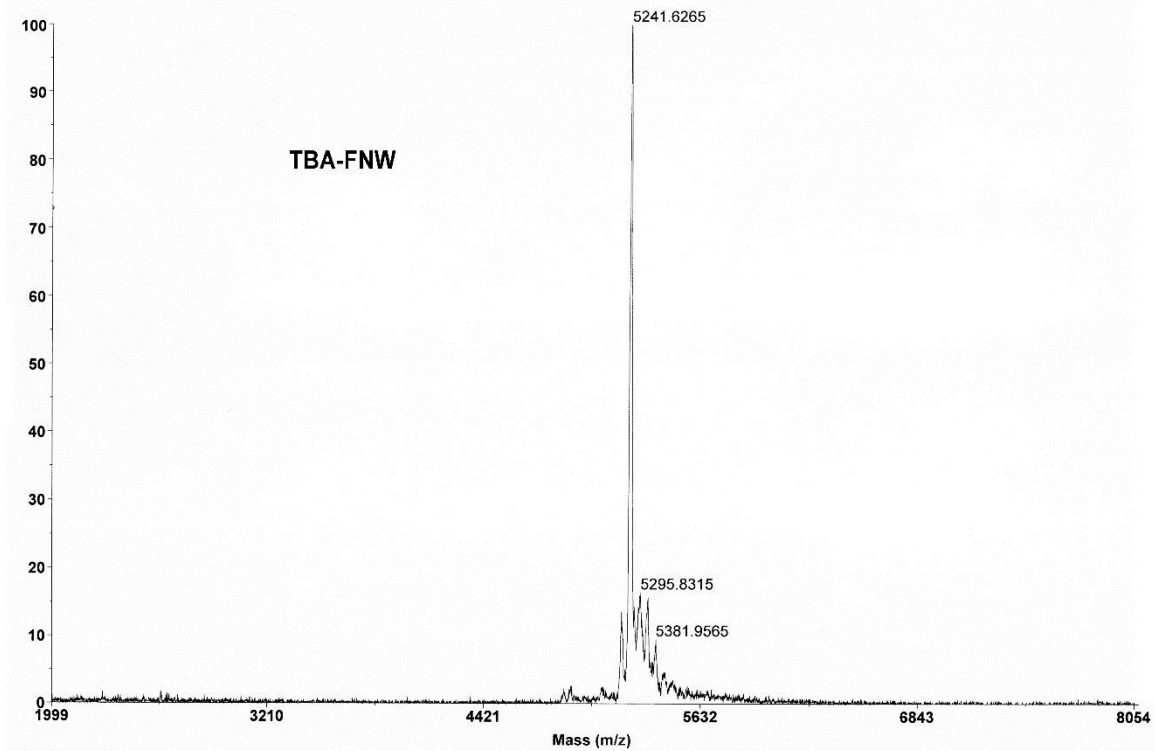
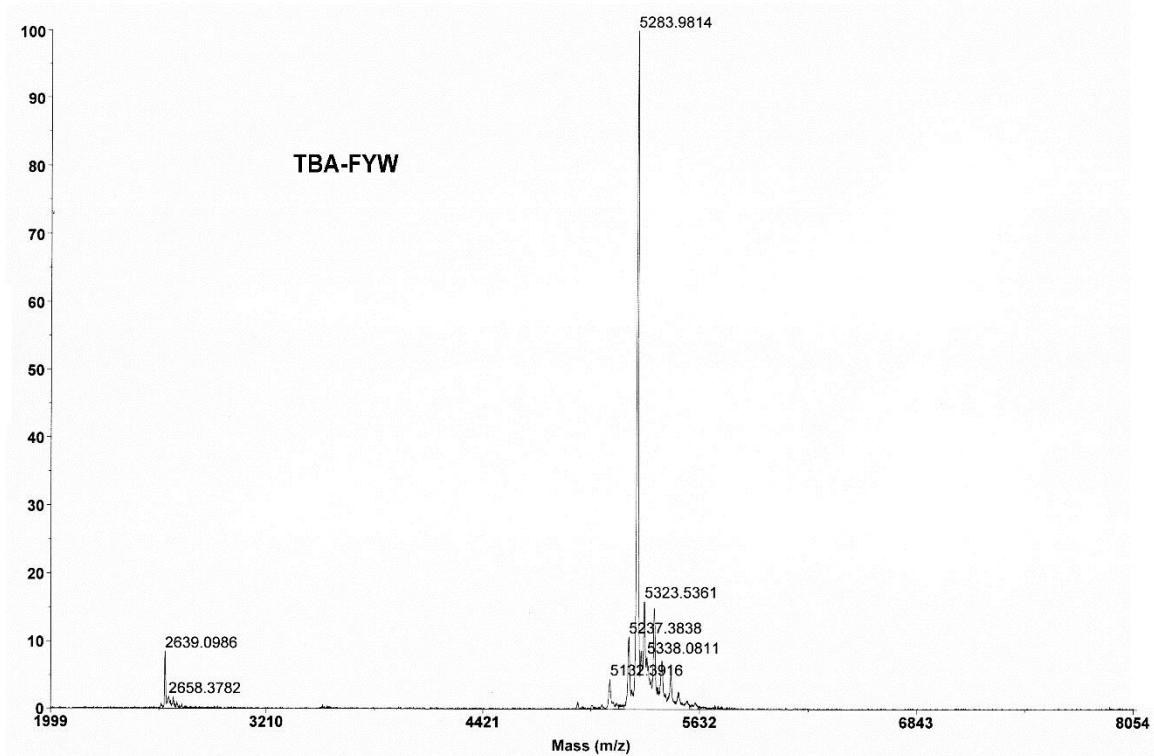


Figure S8. Geometrical parameters and energy of interaction between selected residues for TBA-WSY complex with thrombin.





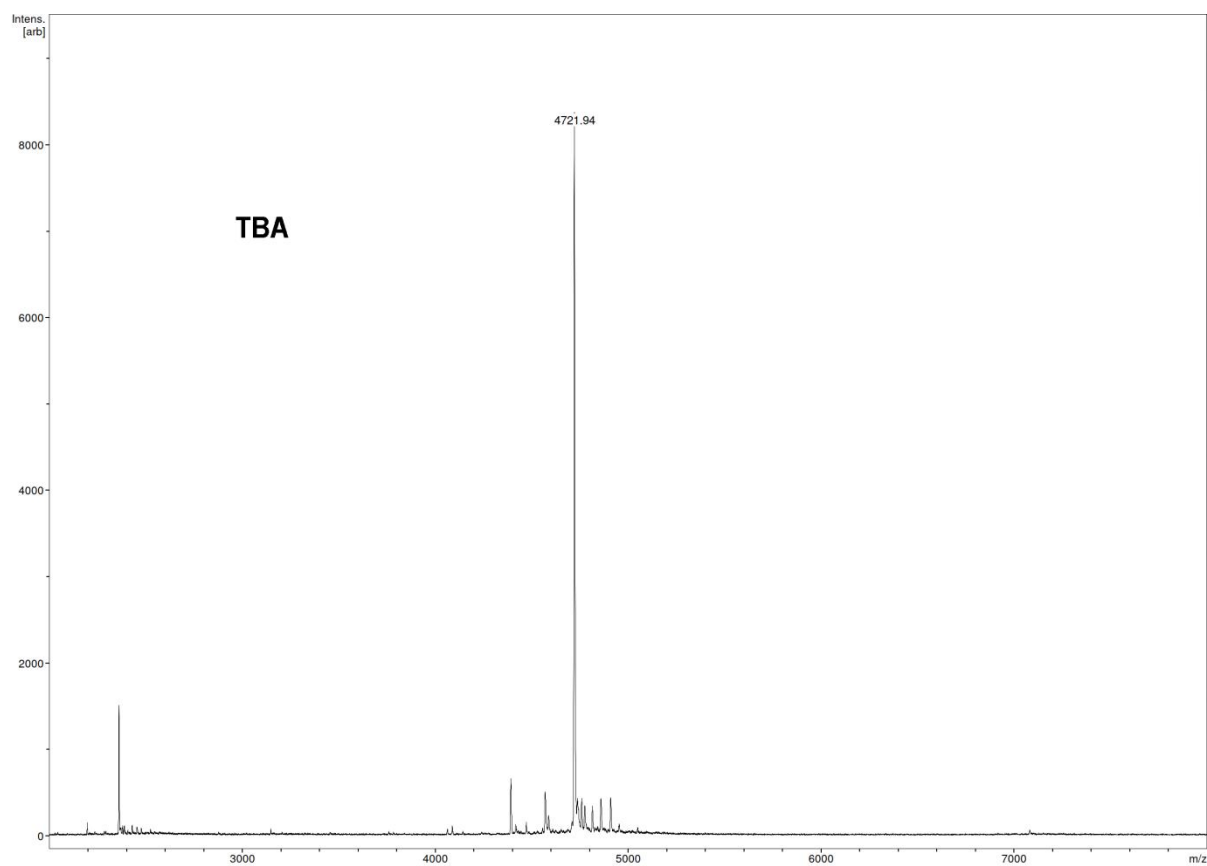
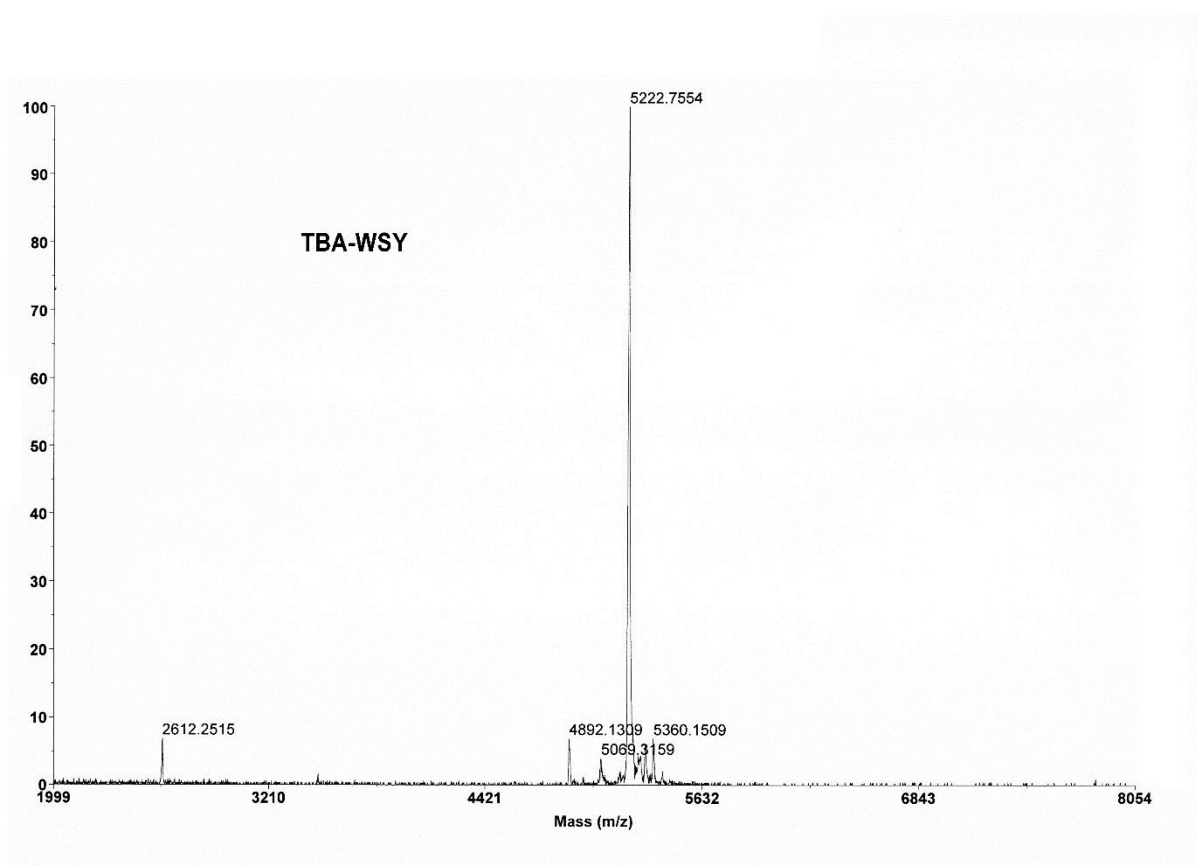


Figure S9. MALDI mass spectra of TBA OPCs.