

PRODH/POX is involved in the mechanism of metformin-induced apoptosis in melanoma cells.

Ilona Oscilowska¹, Karol Rolkowski², Weronika Baszanowska², Thi Yen Ly Huynh², Sylwia Lewoniewska², Magdalena Nizioł¹, Magdalena Sawicka¹, Katarzyna Bielawska¹, Paweł Szoka¹, Wojciech Miltyk¹ and Jerzy Palka^{2,*}

¹ Department of Analysis and Bioanalysis of Medicines, Medical University of Białystok, Kilinskiego 1, 15-089 Białystok, Poland, phone: +48-85-748-5845; e-mail: ilona.zareba@gmail.com (I.O.), katarzyna.bielawska@umb.edu.pl (K.B.), pawelszoka@wp.pl (P.S.), magdalena.niziol@umb.edu.pl (M.N.), sawicka.magdalenamaria@gmail.com (M.S.), wojciech.miltyk@umb.edu.pl (W.M.)

² Department of Medicinal Chemistry, Medical University of Białystok, Kilinskiego 1, 15-089 Białystok, Poland, phone: +48-85-748-5706; e-mail: karol.rolkowski@gmail.com (R.K.), w.baszanowska22@wp.pl (W.B.), htyly79@gmail.com (T.Y.L.H.), sylwialewoniewska123@wp.pl (S.L.), pal@umb.edu.pl (J.P.)

* Correspondence: pal@umb.edu.pl; Tel.: +48-85-748-5706

1. Results

1.1. AMPK expression

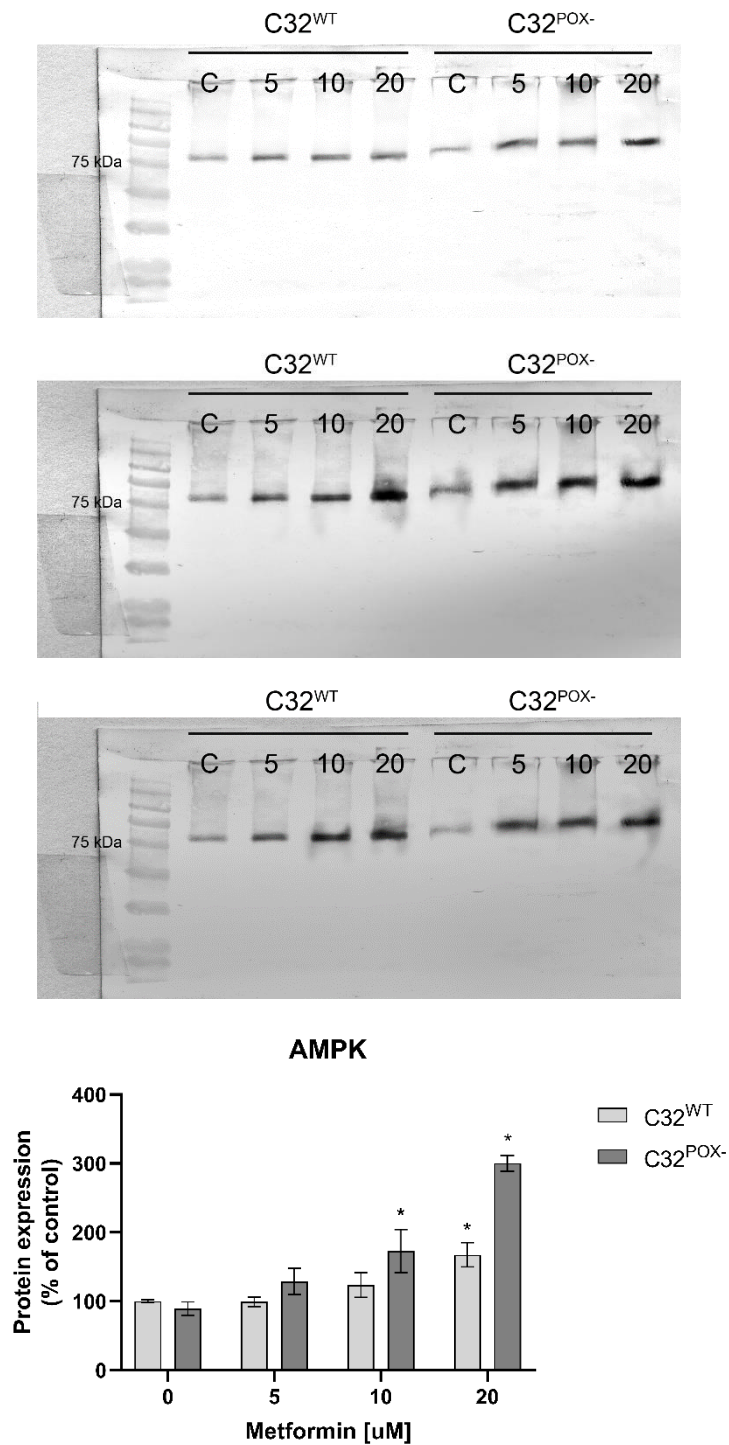


Figure S1 The AMPK expressions in C32^{WT} and C32^{POX-} cells cultured in DMEM. GAPDH expression was used as a loading control. The WB bands intensity of representative gels was quantified by densitometry and normalized to GAPDH. The densitometry values represent the mean (% of control) \pm SD of three experiments, *P < 0.001.

1.2. PRODH/POX expression

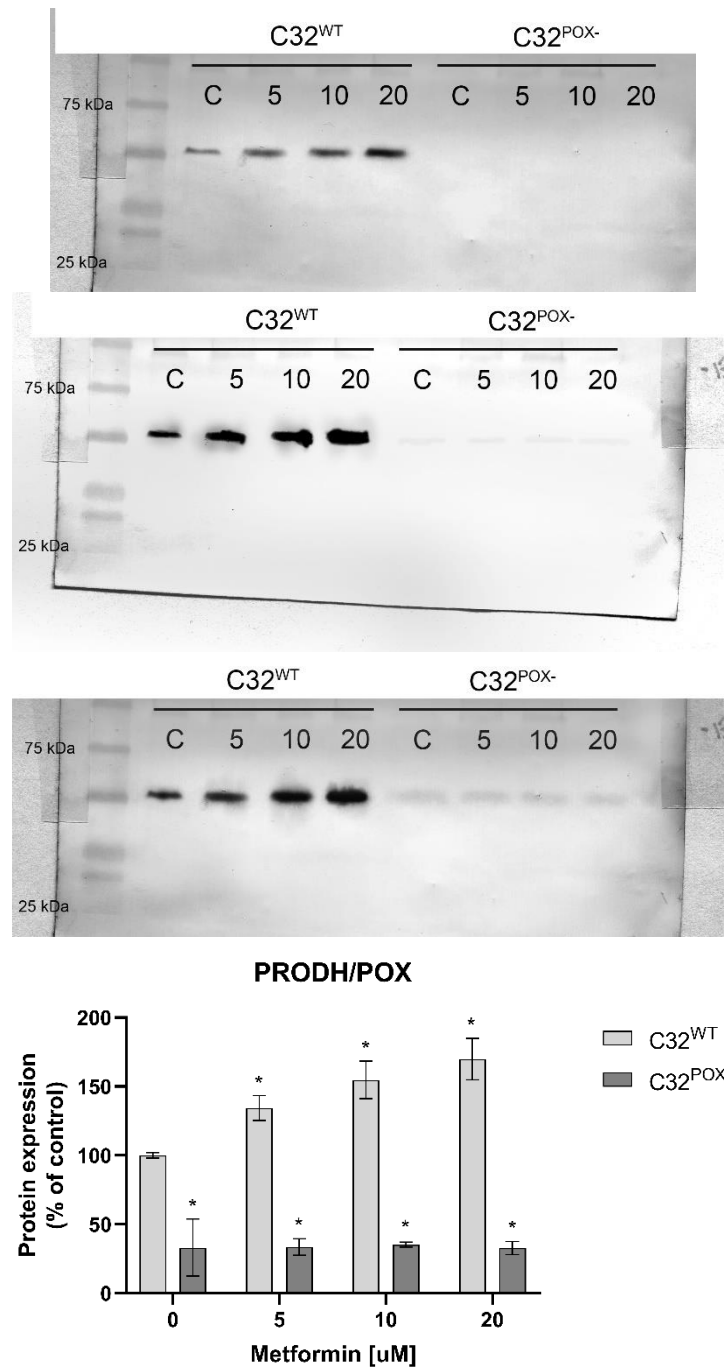


Figure S2 The PRODH/POX expressions in C32^{WT} and C32^{POX-} cells cultured in DMEM. GAPDH expression was used as a loading control. The WB bands intensity of representative gels was quantified by densitometry and normalized to GAPDH. The densitometry values represent the mean (% of control) \pm SD of three experiments, * $P < 0.001$.

1.3. Expression of Caspase-9 and cleaved-Caspase-9

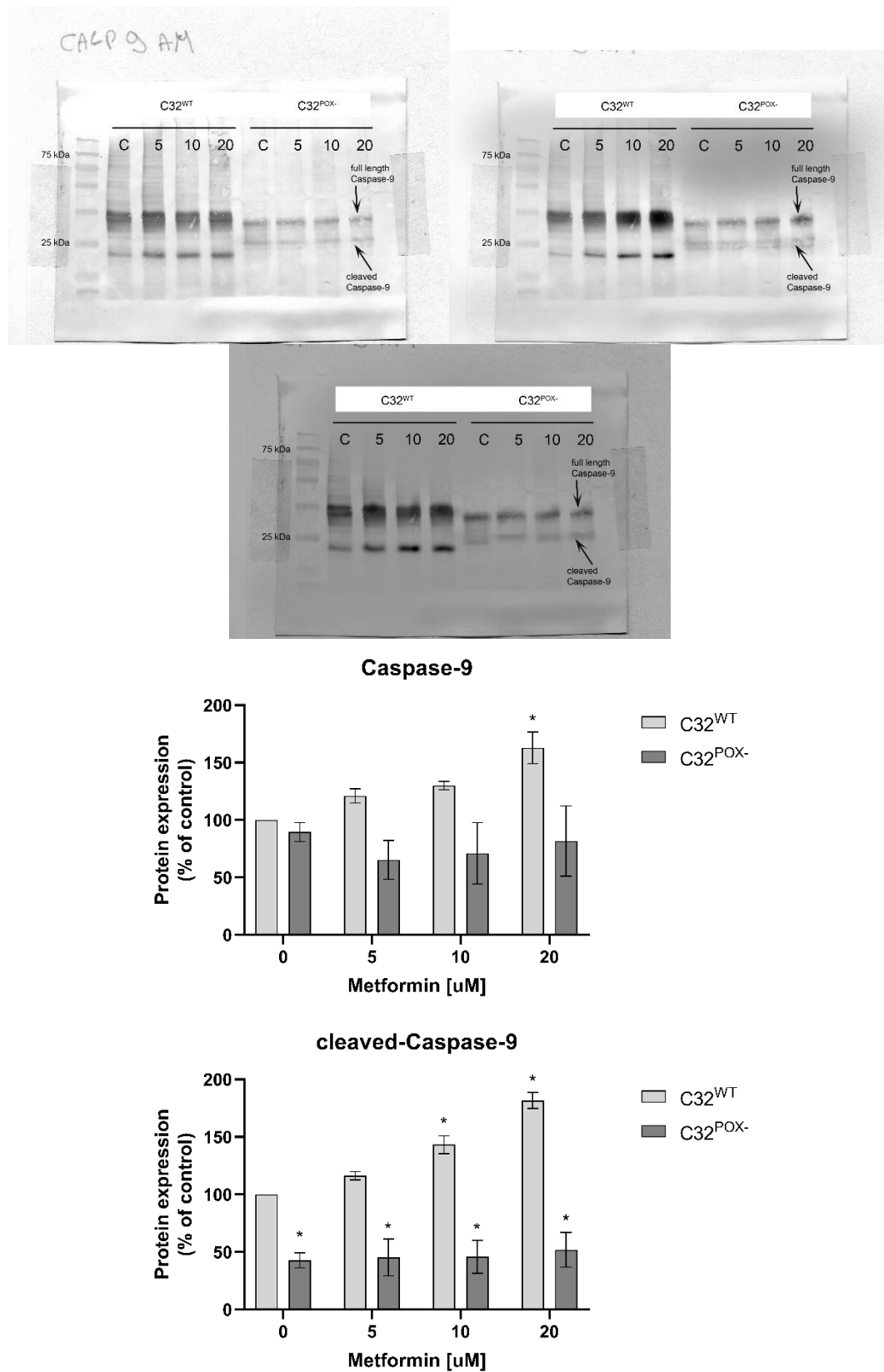


Figure S3 The expression of Caspase-9 and cleaved-Caspase-9 in C32^{WT} and C32^{POX-} cells cultured in DMEM. GAPDH expression was used as a loading control. The WB bands intensity of representative gels was quantified by densitometry and normalized to GAPDH. The densitometry values represent the mean (% of control) \pm SD of three experiments, *P < 0.001.

1.4. Caspase-3 expression

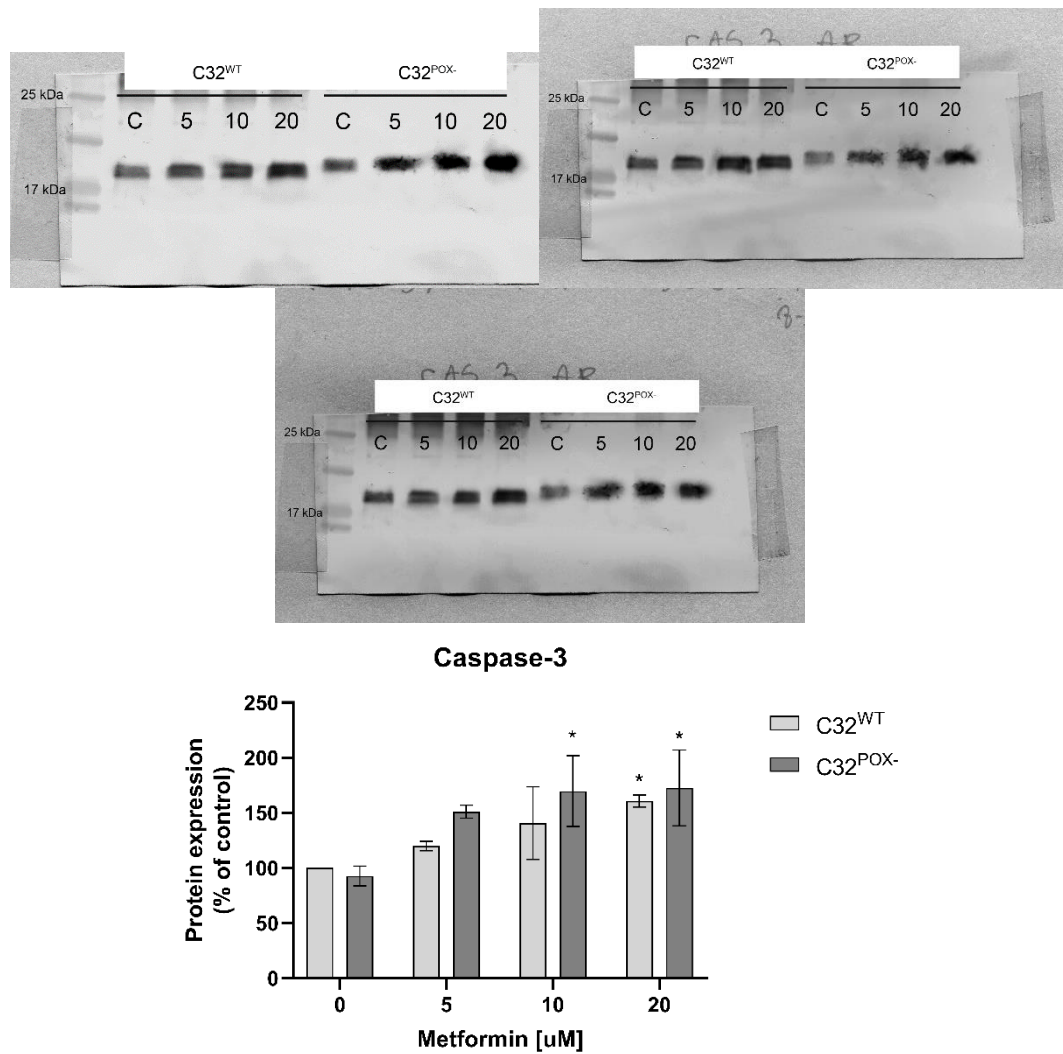


Figure S4 The Caspase-3 expressions in C32^{WT} and C32^{POX-} cells cultured in DMEM. GAPDH expression was used as a loading control. The WB bands intensity of representative gels was quantified by densitometry and normalized to GAPDH. The densitometry values represent the mean (% of control) ± SD of three experiments, *P < 0.001.

1.5. Cleaved-Caspase-3 expression

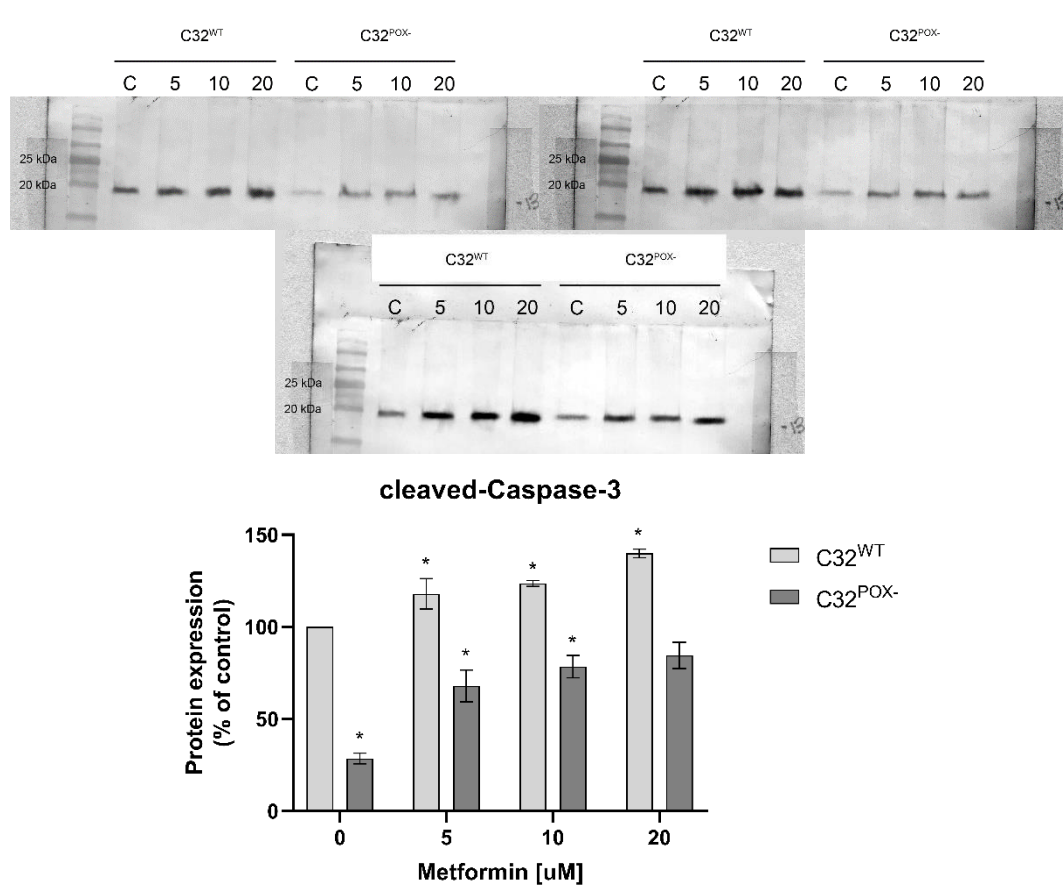


Figure S5 The cleaved-Caspase-3 expressions in C32^{WT} and C32^{POX-} cells cultured in DMEM. GAPDH expression was used as a loading control. The WB bands intensity of representative gels was quantified by densitometry and normalized to GAPDH. The densitometry values represent the mean (% of control) \pm SD of three experiments, * $P < 0.001$.

1.6. Expression of PARP and cleaved-PARP

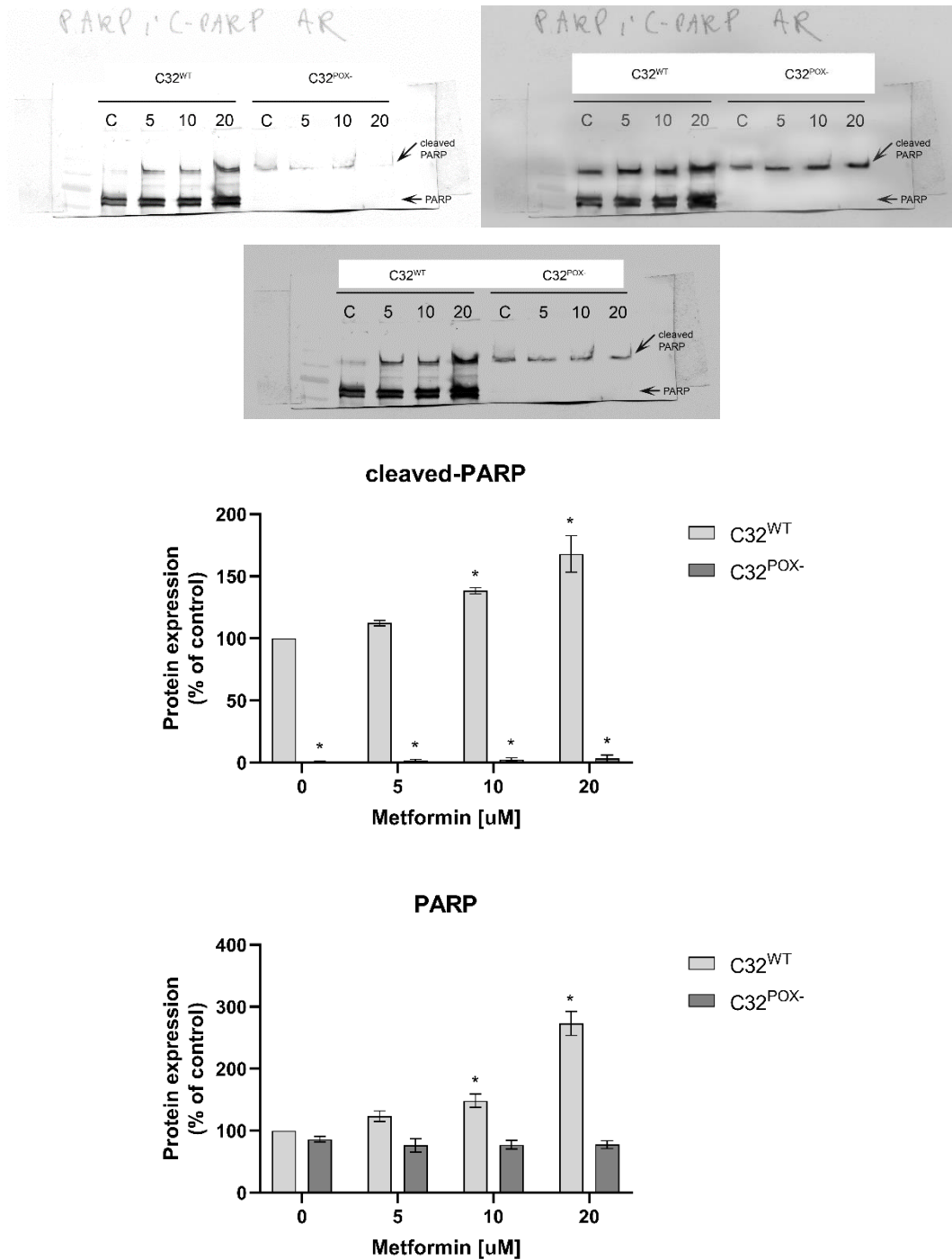


Figure S6 The expressions of PARP and cleaved-PARP in C32^{WT} and C32^{POX-} cells cultured in DMEM. GAPDH expression was used as a loading control. The WB bands intensity of representative gels was quantified by densitometry and normalized to GAPDH. The densitometry values represent the mean (% of control) \pm SD of three experiments, *P < 0.001.

1.7. Beclin-1 expression

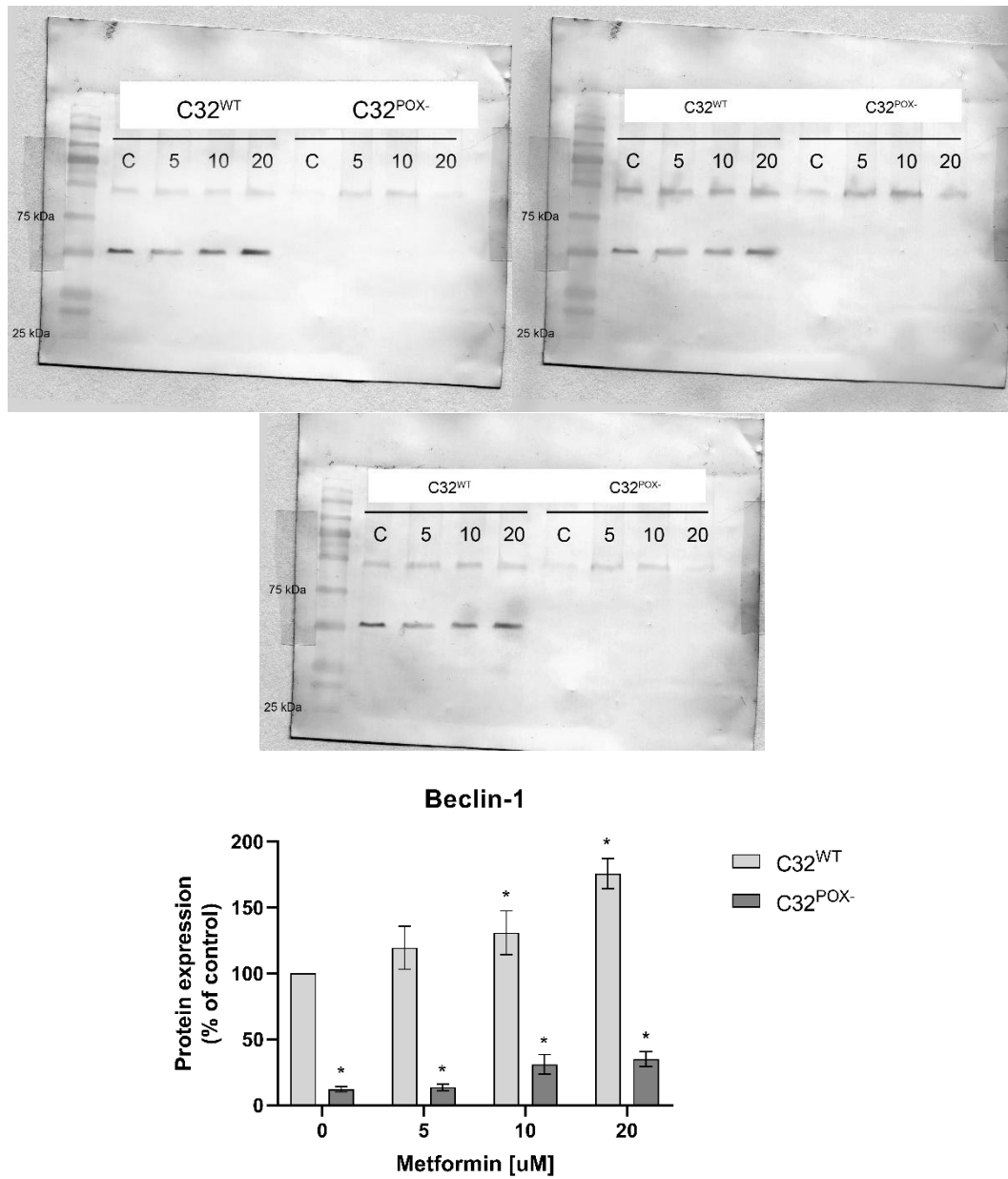


Figure S7 The Beclin-1 expressions in C32^{WT} and C32^{POX-} cells cultured in DMEM. GAPDH expression was used as a loading control. The WB bands intensity of representative gels was quantified by densitometry and normalized to GAPDH. The densitometry values represent the mean (% of control) \pm SD of three experiments, *P < 0.001.

1.8. Atg7 expression

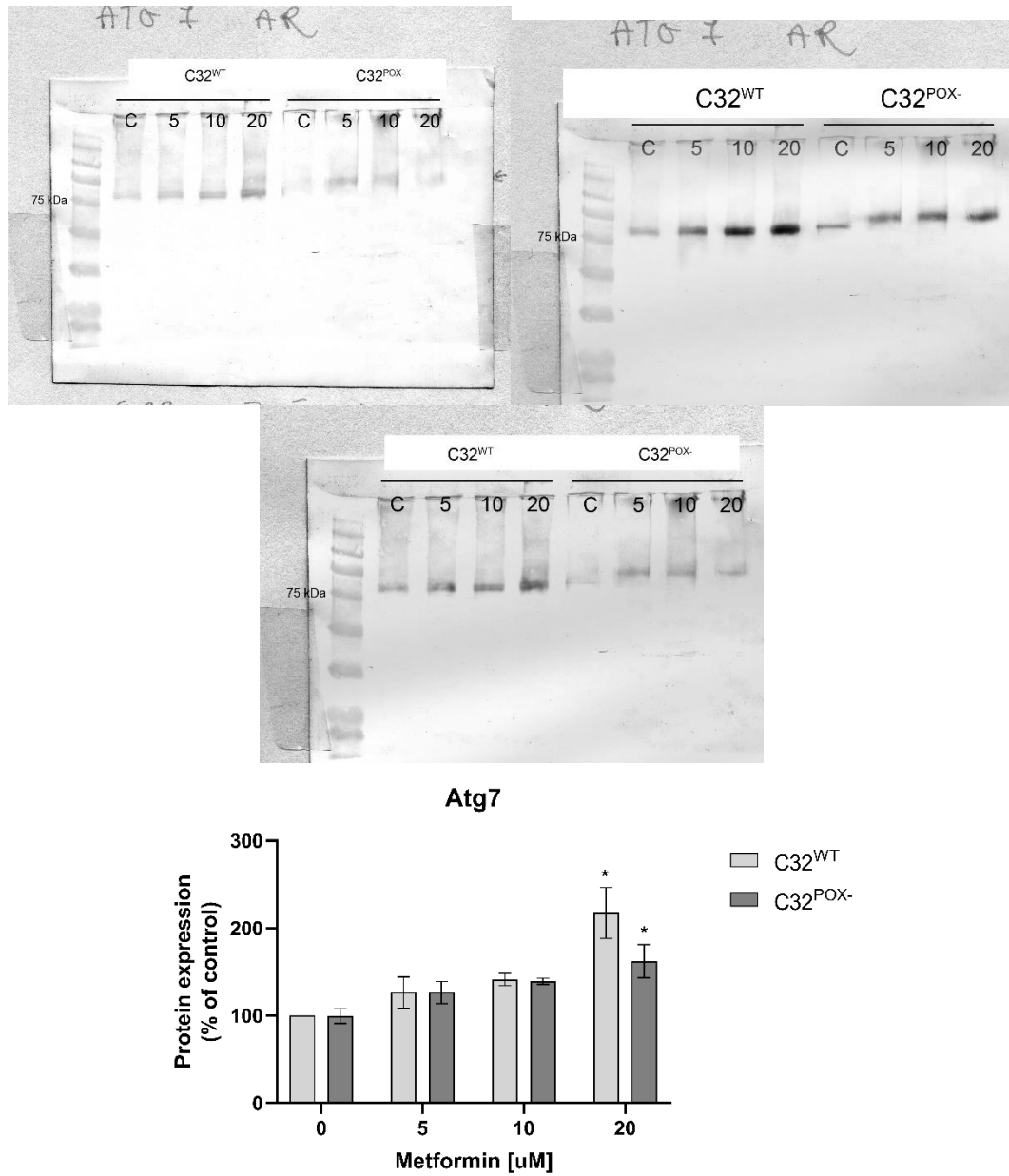


Figure S8 The Atg7 expressions in C32^{WT} and C32^{POX-} cells cultured in DMEM. GAPDH expression was used as a loading control. The WB bands intensity of representative gels was quantified by densitometry and normalized to GAPDH. The densitometry values represent the mean (% of control) \pm SD of three experiments, *P < 0.001.