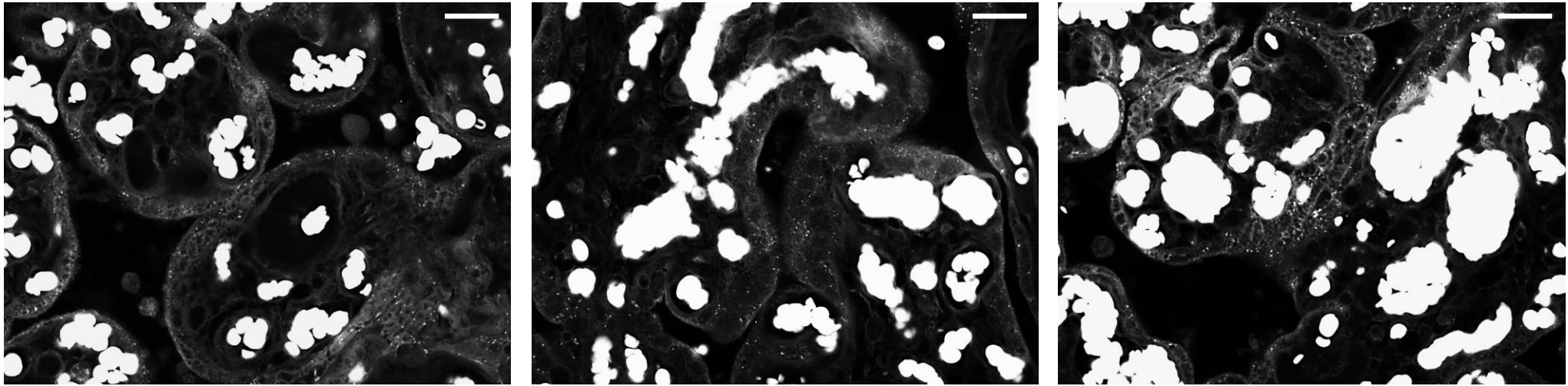


Table S1. Oligos used in this study.

Padlock Probe NSP7	5'ACATTGAGCCCACATTTTTTCTCAATTCTGCTACTTTACTACCTCAATTCTGCTACTG TACTACTTTTTTCATTGTGTAAGTGA 3'
RCA Primer	AGTACAGTAGCAGAATTGAG
AlexaFluor 595- labelled probe	CTCAATTCTGCTACTTTACTAC

SARS-CoV-2 RNA-positive



SARS-CoV-2 RNA-negative

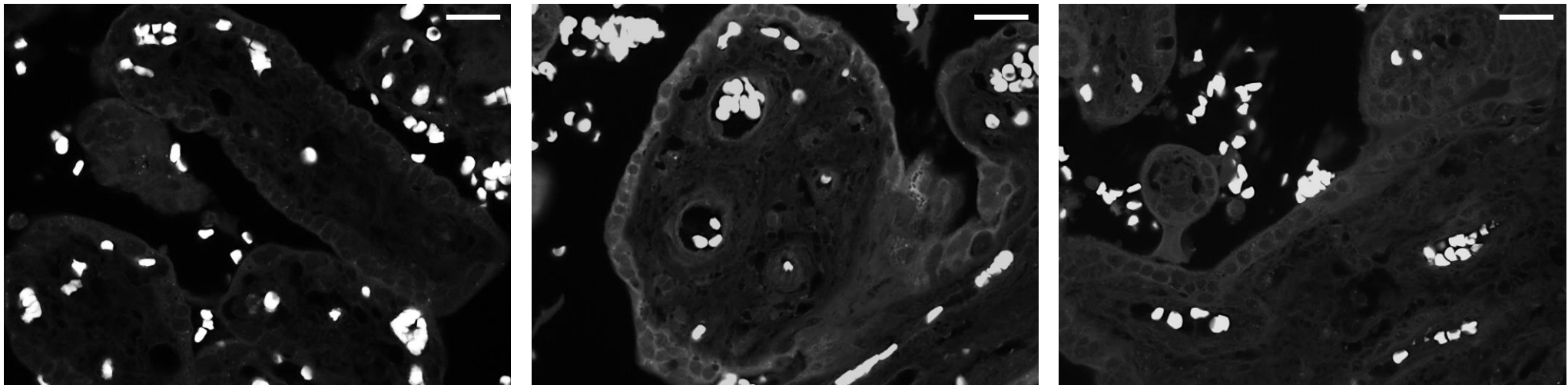


Figure S1. SARS-CoV-2 RNA detection by Padlock Assay. Microscope fields (*black and white*) of padlock assay targeting the SARS-CoV-2 RNA in SARS-CoV-2-positive placenta. No specific signals are detectable in sections from a SARS-CoV-2-negative placenta. Scale bar, 20 μ m.

Figure S2. Immunostaining of spike protein. Representative images of the immunofluorescence analysis showing the distribution of spike protein in deparaffinized sections of SARS-CoV-2-positive placenta. No specific signals are detectable in sections from SARS-CoV-2-negative placenta. Nuclei were labelled with DAPI (blue). (both *black and white* and *coloured* microscope fields). Scale bar, 20 μ m.

