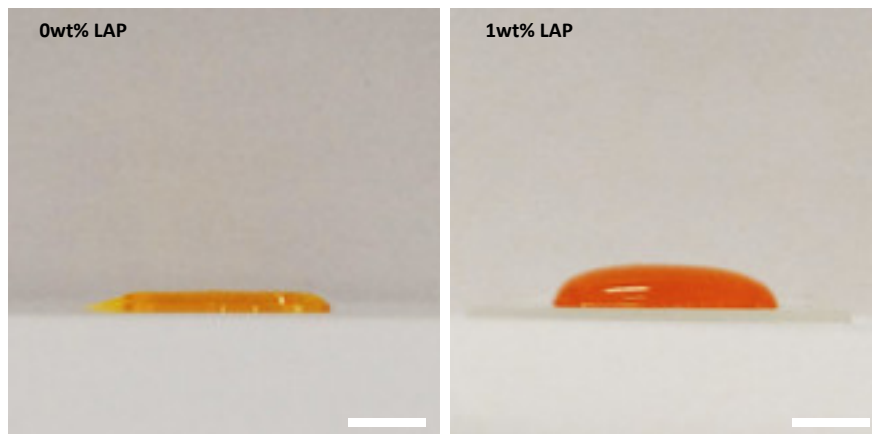
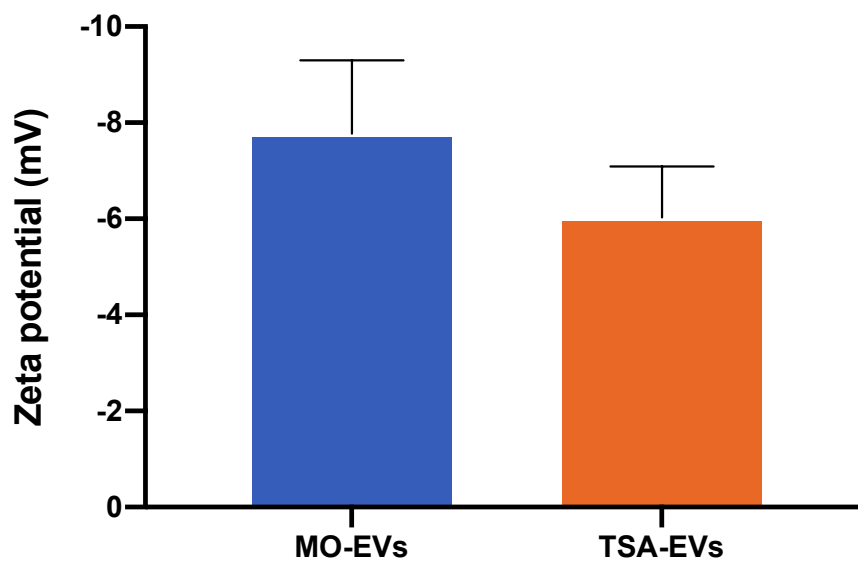


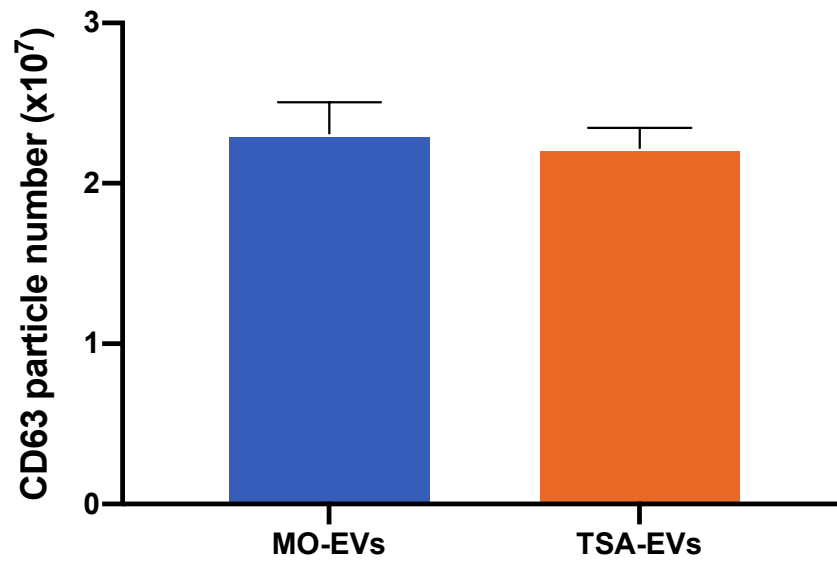
Supplementary Materials



Supplementary Figure S1. 3D printed GelMA-LAP hydrogel integrity in the z-axis. GelMA with/without LAP were extruded as filaments (4 layers) to evaluated shape fidelity in the z-axis. Scale bar = 500 μm .



Supplementary Figure S2. Zeta potential of osteoblast-derived EVs. Data are expressed as mean \pm SD (n = 3).



Supplementary Figure S3. Quantification of CD63 positive particles from TSA-EV or MO-EVs loaded GelMA hydrogel containing 1wt% LAP after 7 days incubation. Data are expressed as mean \pm SD (n = 3).