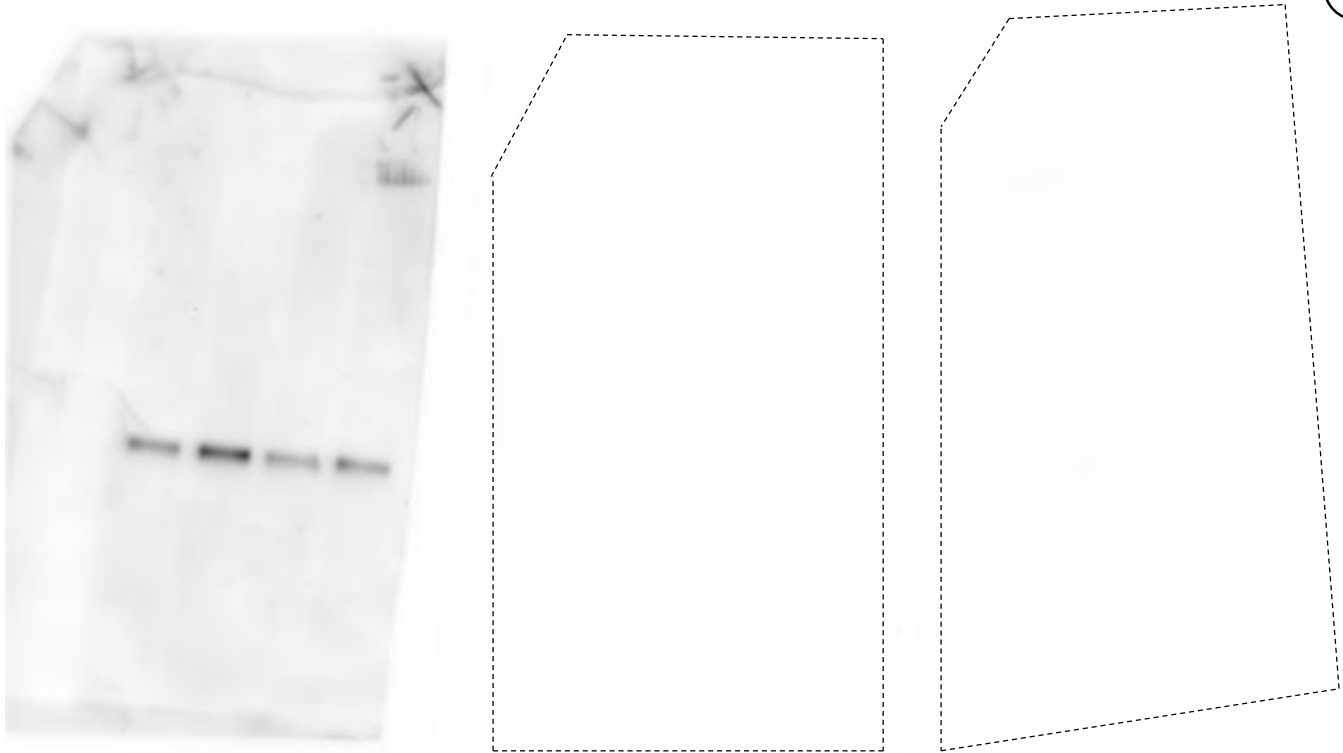


Western blot of mouse kidney protein probed with the anti-pSer982 antibody showing immunodepletion by pSer982 peptide (Pep2) as well as pS2r928/pSer985 peptide (Pep3)

Antigen: CKKKKG**p**SLDSD

Anti-pS982 antibody

Pep1	CKKKKG S LDSD
Pep2	CKKKKG p SLDSD
Pep3	KKKG p SLD p SDNDD



The three panels are triplicate blots from a single image. Dotted lines emphasize the outlines of the blots.

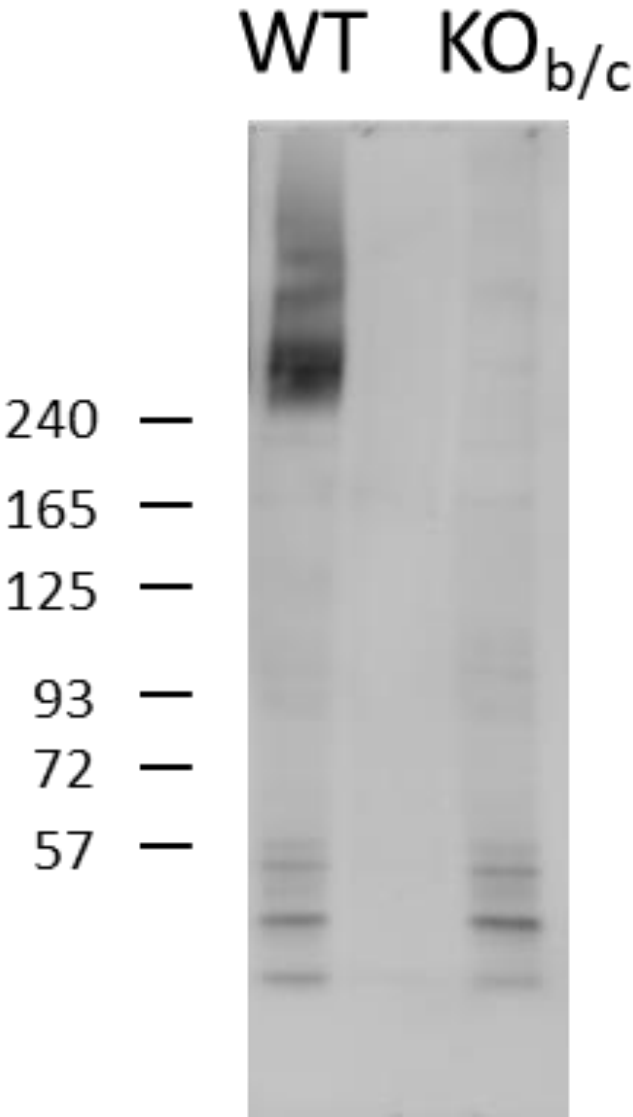
Preabsorption
Peptide:

Pep1

Pep1
+Pep2

Pep1
+Pep3

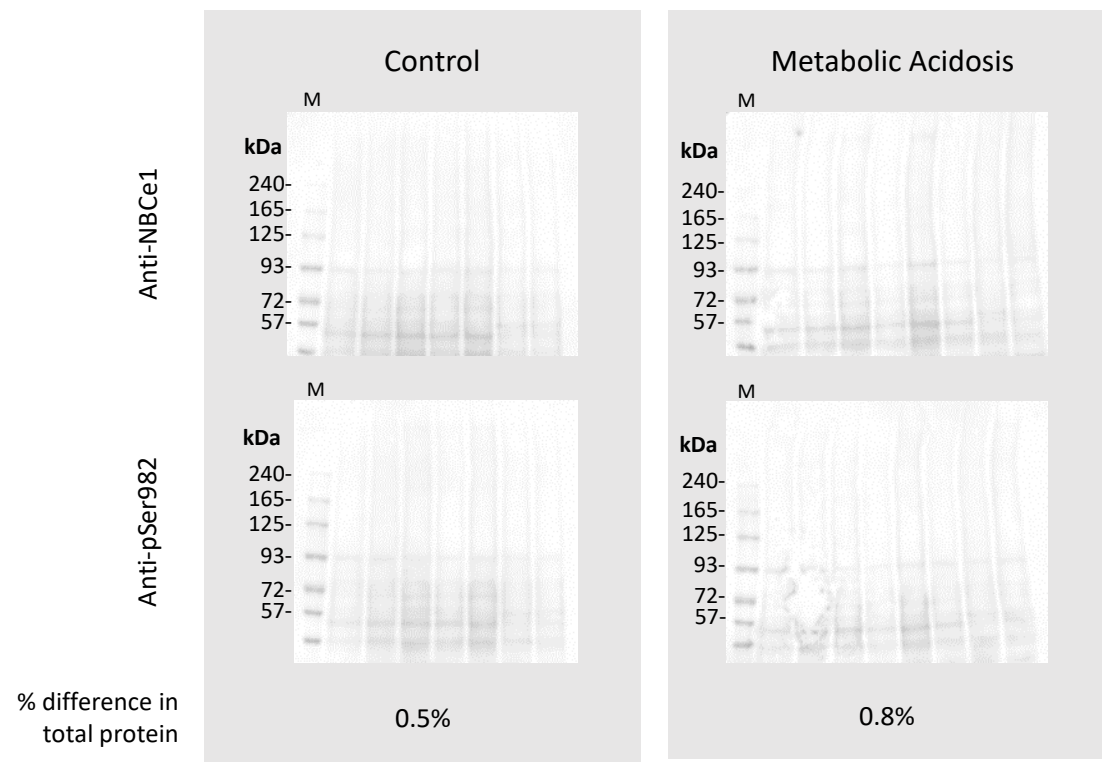
Supplemental Figure S2 Western blot of mouse colon protein probed with the anti-SLC4A4 antibody showing lack of NBCe1 immunoreactivity in the colons of NBCe1b/c-null mice



WT= wild-type mouse
KO_{b/c}= NBCe1b/c null mouse (Salerno et al., 2019)

Supplemental Figure S3

Total-protein stained PVDF membranes of western blots from control and acid-challenged groups



Western blots within experimental groups (Control and Acidosis) were identically loaded. To confirm equal transfer of protein, PVDF membranes were stained with the reversible Memcode total-protein stain, and the average intensity of the entire blot was assessed with Fiji. The percent difference in average intensity was calculated between the two “Control” blots, and the two “Metabolic Acidosis” blots. M= marker lane.