

Supplementary Materials

Acetylenic Synthetic Betulin Derivatives Inhibit Akt and Erk Kinases Activity, Trigger Apoptosis and Suppress Proliferation of Neuroblastoma and Rhabdomyosarcoma Cell Lines

Sylvia K. Król ^{1,*}, Ewa Bębenek ², Magdalena Dmoszyńska-Graniczka ¹, Adrianna Sławińska-Brych ³, Stanisław Boryczka ² and Andrzej Stepulak ¹

¹ Department of Biochemistry and Molecular Biology, Faculty of Medicine, Medical University of Lublin, Chodźki 1, 20-093 Lublin, Poland; magdalena.dmoszynska-graniczka@umlub.pl (M.D.-G.); andrzej.stepulak@umlub.pl (A.S.)

² Department of Organic Chemistry, Faculty of Pharmaceutical Sciences in Sosnowiec, Medical University of Silesia, Jagiellońska 4, 41-200, Sosnowiec, Poland; ebebenek@sum.edu.pl (E.B.); boryczka@sum.edu.pl (S.B.)

³ Department of Cell Biology, Faculty of Biology and Biotechnology, Institute of Biological Sciences, Maria Curie-Skłodowska University, Akademicka 19, 20-033 Lublin, Poland; adrianna.slawska-brych@poczta.umcs.lublin.pl

* Correspondence: sylwia_krol15@wp.pl

LIST OF CONTENTS

Figure S1. ^1H -NMR spectrum for EB5 (600 MHz, CDCl_3)

Figure S2. ^{13}C -NMR spectrum for EB5 (150 MHz, CDCl_3)

Figure S3. ^1H -NMR spectrum for EB25/1 (600 MHz, CDCl_3)

Figure S4. ^{13}C -NMR spectrum for EB25/1 (150 MHz, CDCl_3)

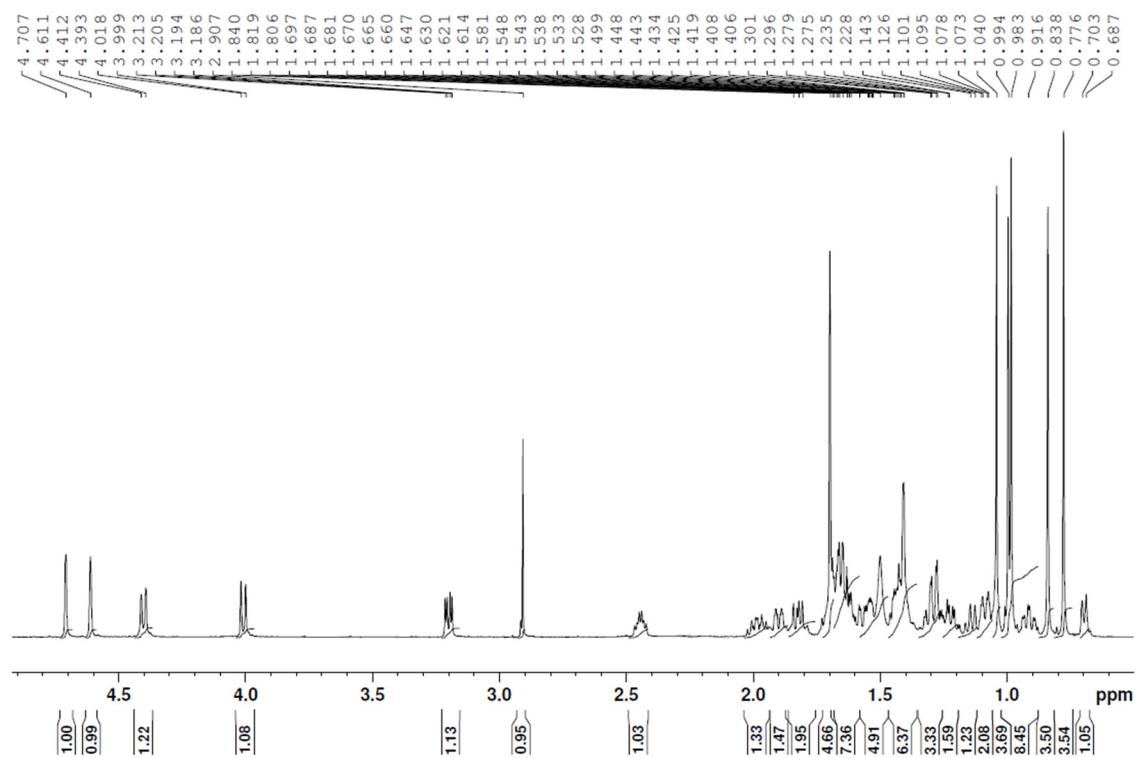
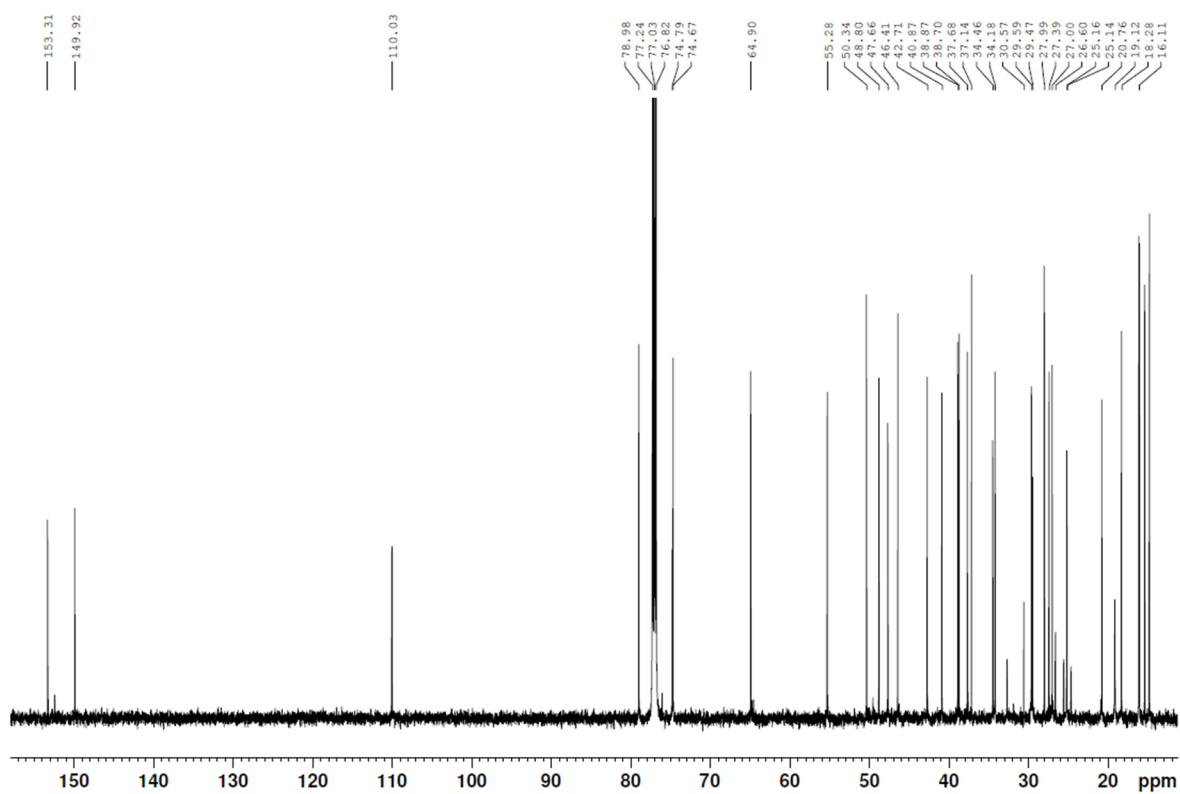


Figure S1. ¹H-NMR spectrum for EB5 (600 MHz, CDCl₃)



FigureS2. ^{13}C -NMR spectrum for EB5 (150 MHz, CDCl_3)

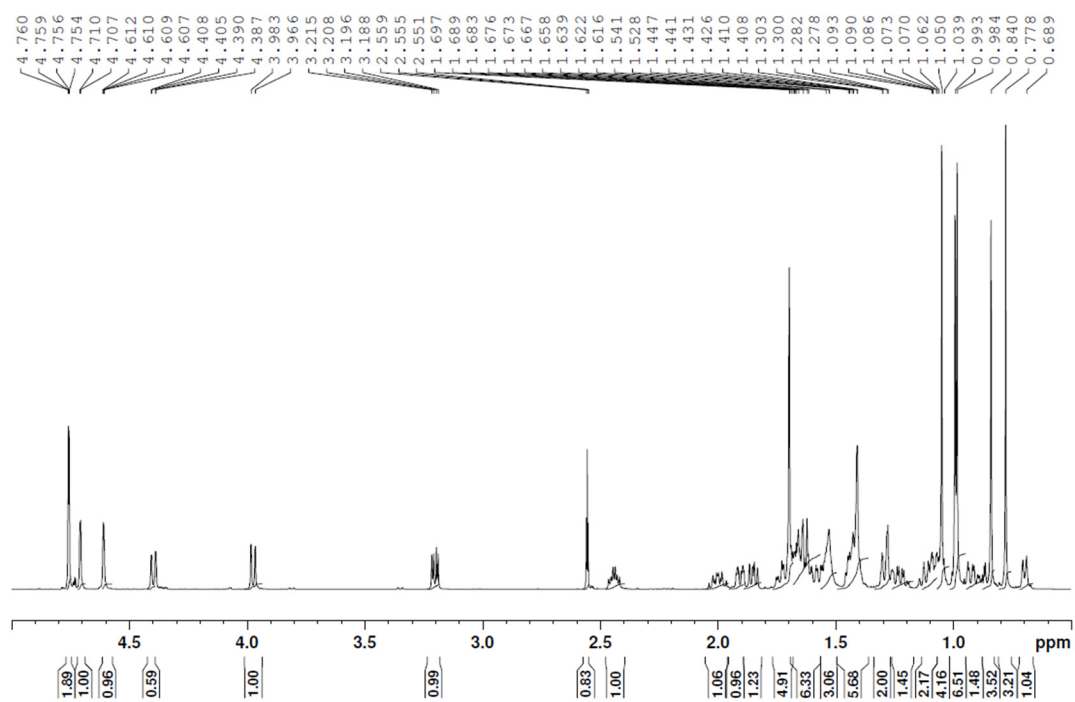


Figure S3. ^1H -NMR spectrum for EB25/1 (600 MHz, CDCl_3)

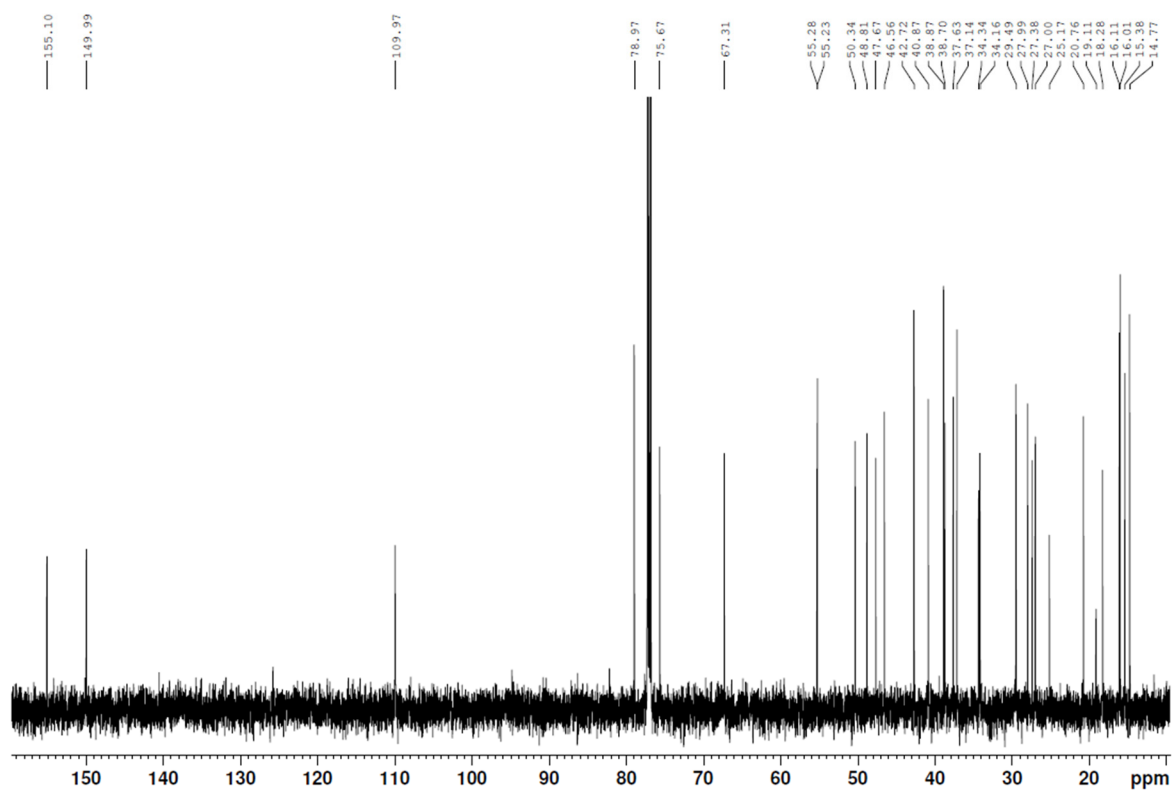


Figure S4. ^{13}C -NMR spectrum for EB25/1 (150 MHz, CDCl_3)