

Supplementary Material

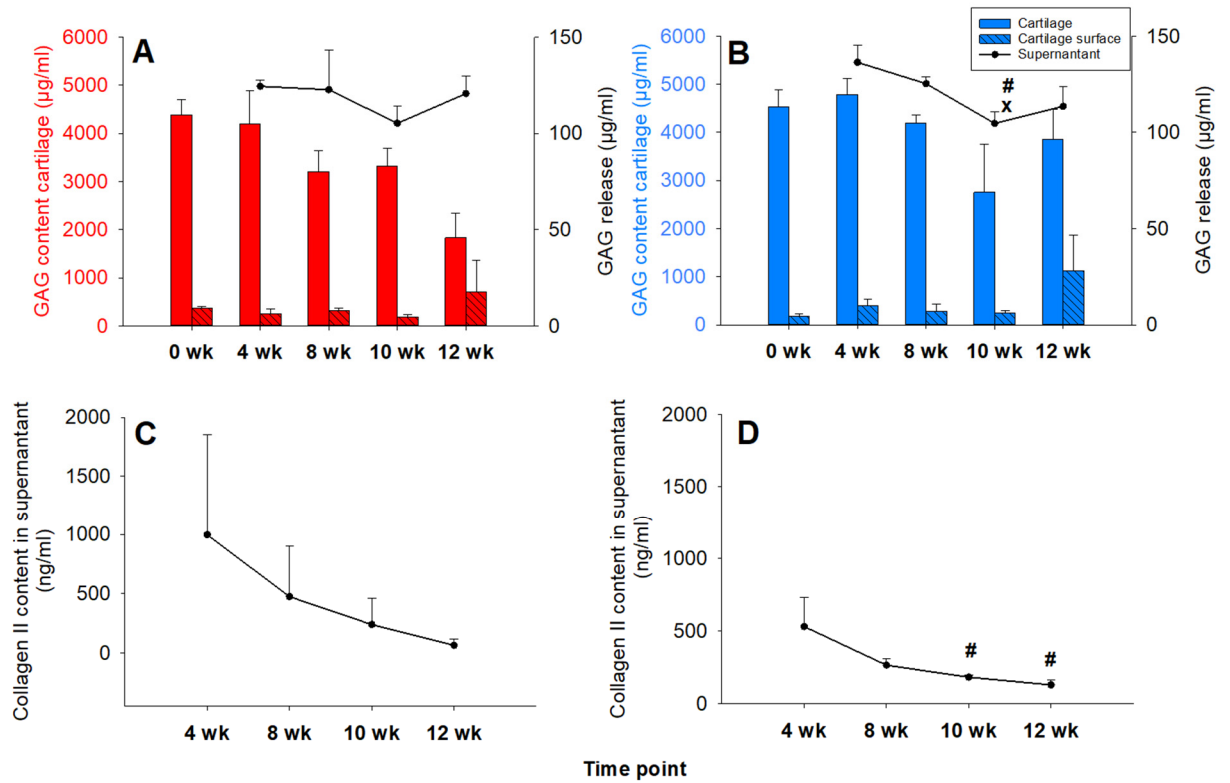


Figure S1. Quantitation of proteoglycan content or liberation (DMB assay) or newly produced collagen 2 (ELISA) in cartilage/PGA-hybrids (cell-free or cell-loaded PGA). Levels of proteoglycans or newly produced collagen 2 were analyzed in fresh and cultured 'host' cartilage (cartilage), cells on the surface of the cartilage (cartilage surface), and supernatant (supernatant), using either cell-free (A for proteoglycan; C for collagen 2) or cell-loaded PGA (B for proteoglycan; D for collagen 2); means \pm SEM; symbols show $p \leq 0.05$ versus # 4 weeks; x 8 weeks.