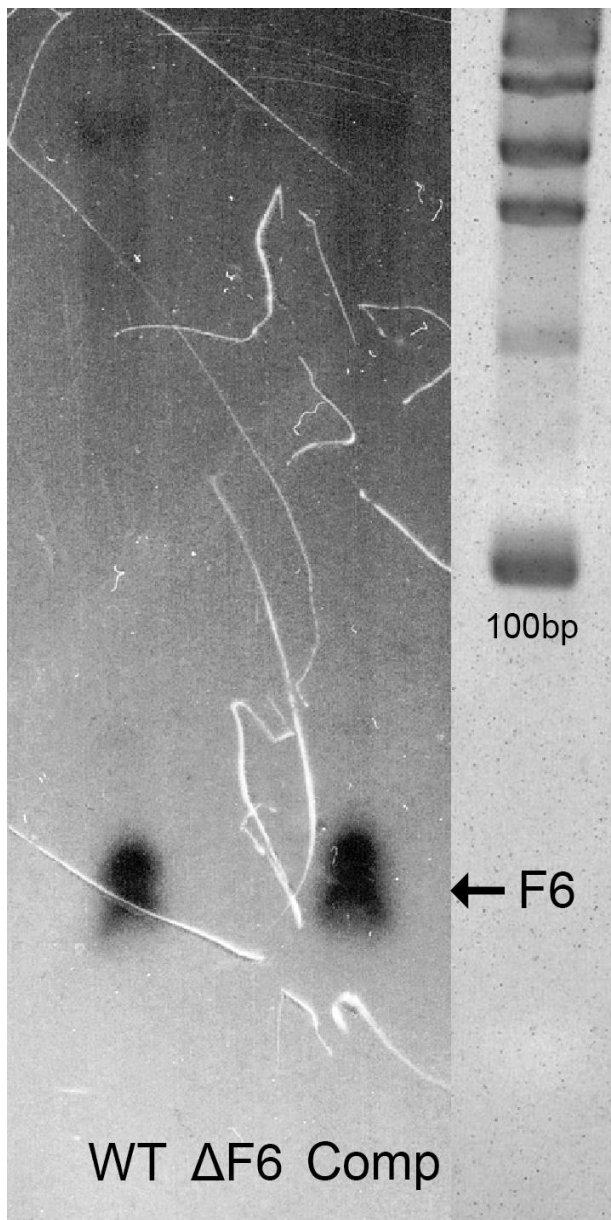
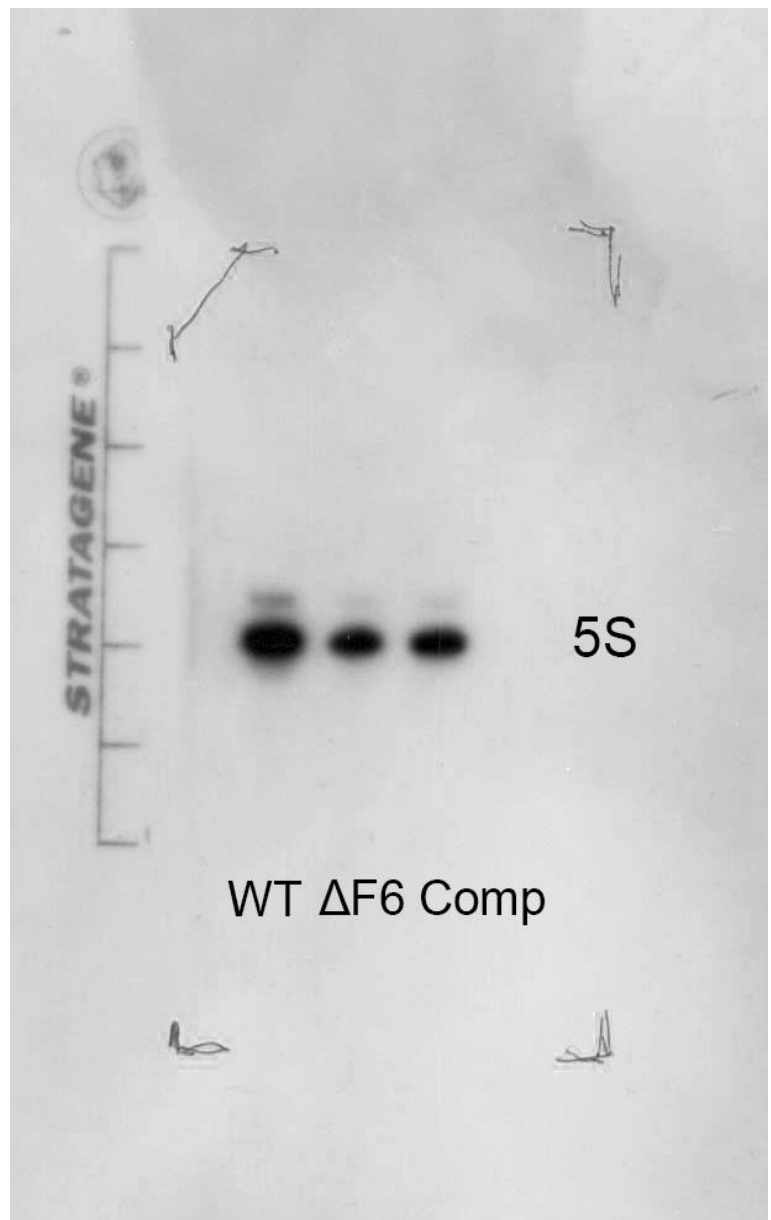
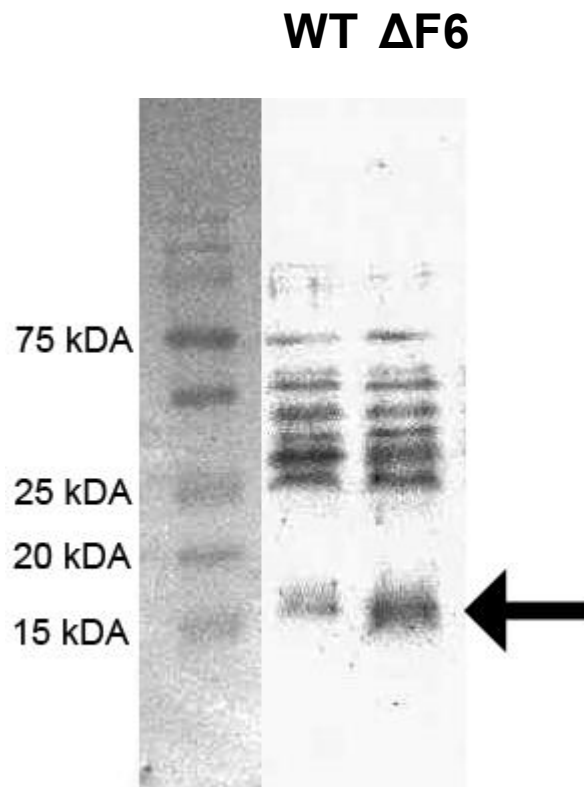
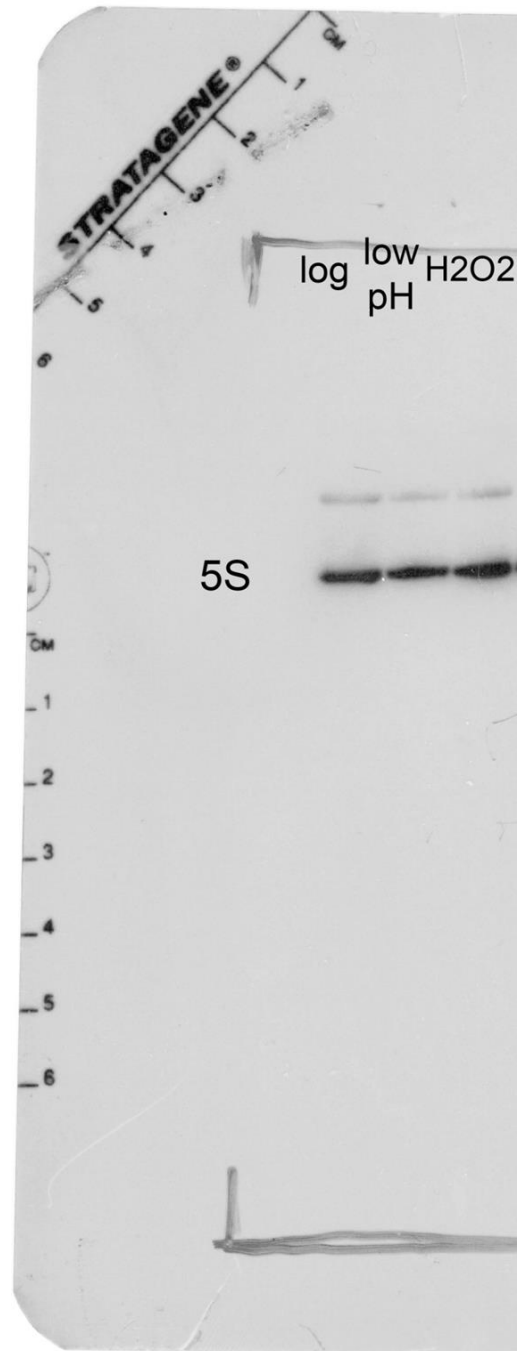


**A****B**

Northern blot analysis of F6 transcription in wt,  $\Delta F6$ , and F6 complemented ( $\Delta F6:F6$ ) strains (A) and the 5S loading control (B)



Inhibition of RpfE2 protein synthesis by F6. Wt and  $\Delta$ F6 cultures were analyzed for RpfE2 protein expression by western blotting using antibodies for Rpf conservative domain.

**A****B**

Transcription of F6 in mid-log phase of growth and under acidic (low pH) and oxidative (H<sub>2</sub>O<sub>2</sub>) stresses estimated by Northern blotting. (A) and the 5S loading control (B)