

Supplementaly figure S1

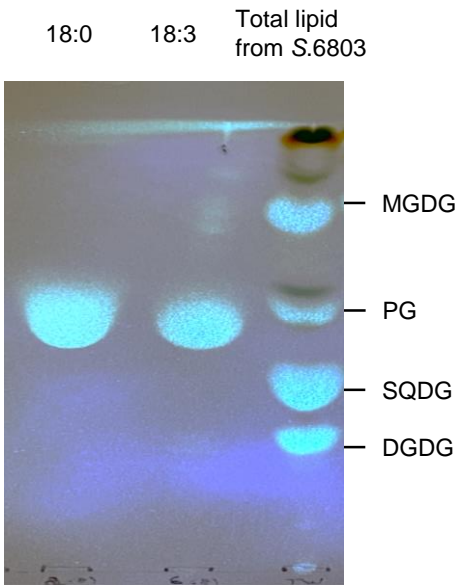


Figure S1. Position of free fatty acids on TLC developed with chloroform : methanol : 28% NH₄OH = 65 : 35 : 5 (v/v/v). 18:0, 18:3 and purified lipids from *Synechocystis* were applied to TLC plate that developed with chloroform : methanol : 28% NH₄OH = 65 : 35 : 5 (v/v/v). Lipids on TLC plate were visualized by primulin.