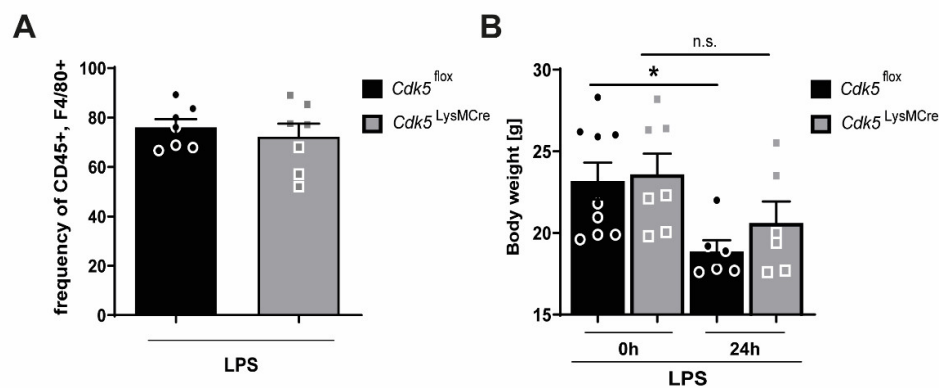
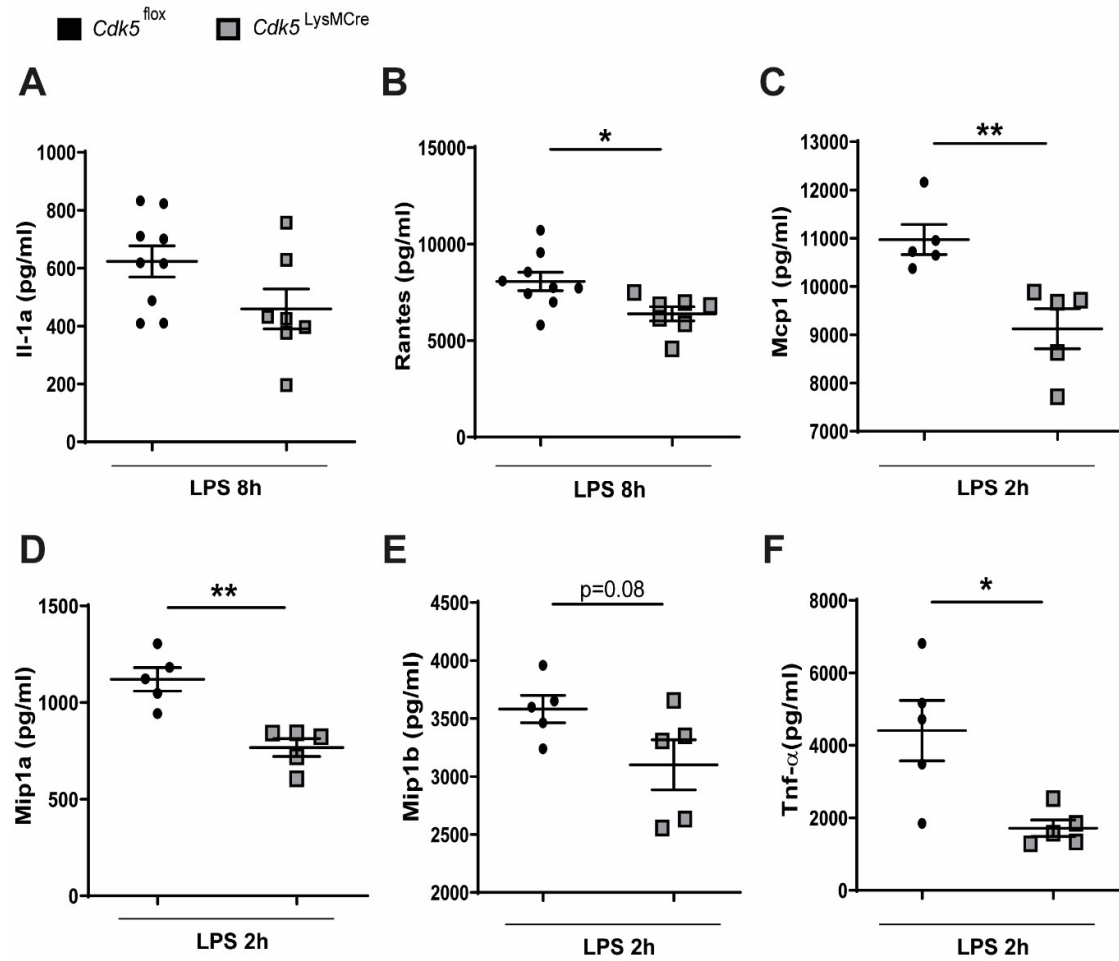


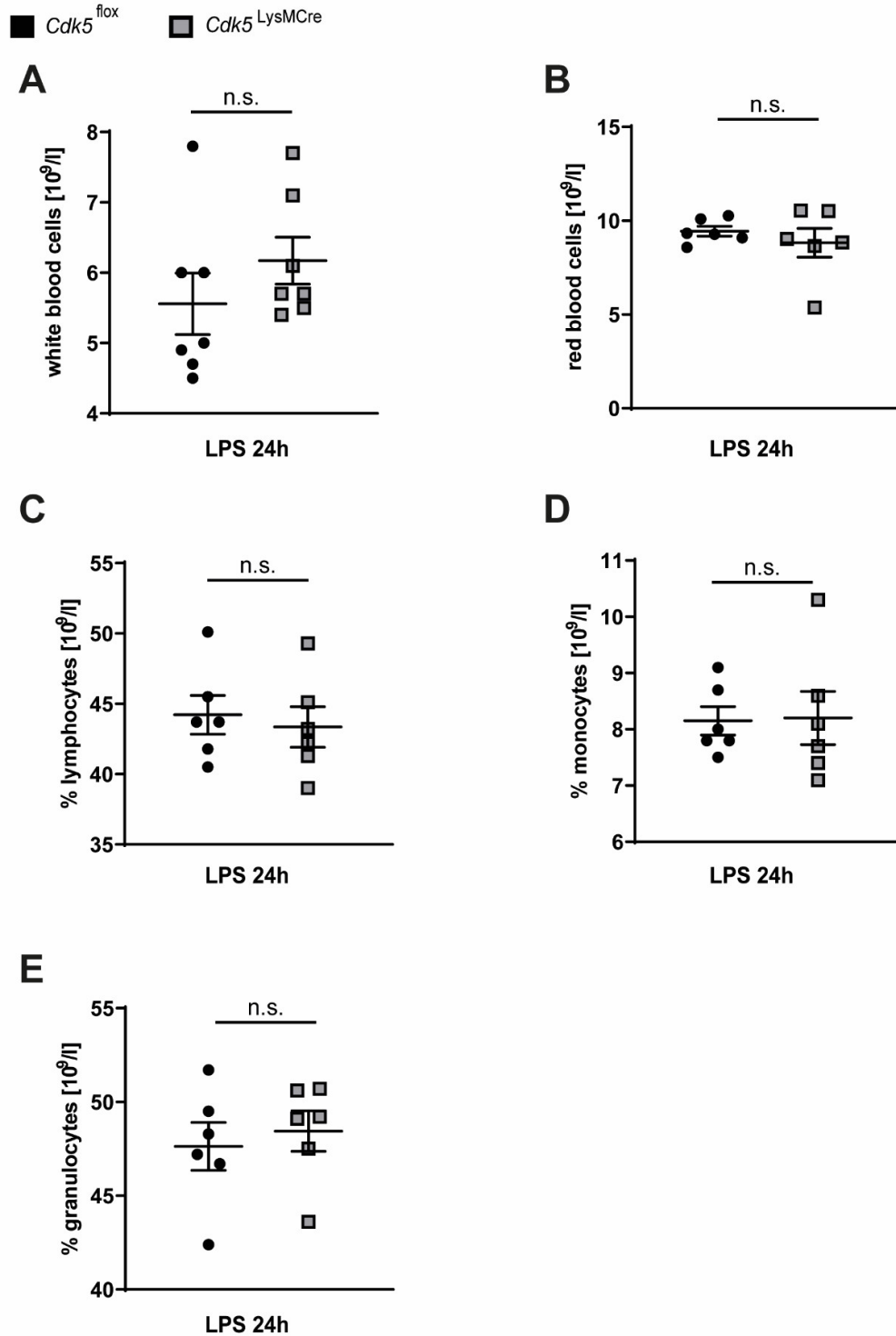
Supplementary Figure S1: (A) BMDMs derived from wild-type mice were 30 min pre-treated with 0.16 μ M roscovitine, the specific concentration for *Cdk5* inhibition or DMSO (vehicle control), and then stimulated 4 h with PBS (Co) or LPS (100 ng/ml) and relative expression of *Cdk5* mRNA was determined by qRT-PCR. (B) BMDMs derived from wild-type mice were 30 min pre-treated with 0.16 μ M roscovitine or DMSO (vehicle control) and then stimulated 4 h with LPS (100 ng/ml) and relative expression of *c-Maf* mRNA was determined by qRT-PCR. (C) IL-12 (approx. 45kDa) protein and vinculin (117 kDa) as loading control were detected by immunoblot (left) and quantified (right). Results are depicted as mean \pm SEM. Statistical analysis was performed by (A) a 2-way ANOVA followed by a Bonferroni post hoc test and (B) and (C) by a normality test, followed by a two-tailed unpaired Student's *t* test. n.s. not significant.



Supplementary Figure S2: (A) Flow cytometry analysis for macrophages (CD45⁺, F4/80⁺) from bronchoalveolar lavage (BAL) of *Cdk5*^{flox} and *Cdk5*^{LysMCre} mice after 24 h of LPS-induced endotoxemia. (B) Body weight of *Cdk5*^{flox} and *Cdk5*^{LysMCre} mice before and after 24 h of LPS-induced endotoxemia. Results are depicted as mean \pm SEM. Statistical analysis was performed by a normality test, followed by a two-tailed unpaired Student's *t* test. * $p < 0.05$. n.s. not significant.



Supplementary Figure S3: Concentration of plasma (A) IL-1a (B) Ccl5 (Rantes), (C) Mcp1, (D) Mip1a, (E) Mip1b and (F) TNF-α protein from *Cdk5^{fllox}* and *Cdk5^{LysMCre}* mice after LPS-induced endotoxemia at the indicated time points analysed with Bio-Plex Pro Mouse Cytokine 23-plex Assay. Results are depicted as mean ± SEM. Statistical analysis was performed by a normality test, followed by a two-tailed unpaired Student's t test. * p < 0.05; ** p < 0.01.



Supplementary Figure S4: Analysis of (A) white blood cells, (B) red blood cells, (C) lymphocytes, (D) monocytes and (E) granulocytes in the plasma from *Cdk5^{flox}* and *Cdk5^{LysMCre}* mice after 24 h LPS-induced endotoxemia were investigated with animal blood counter. Results are depicted as mean \pm SEM. Statistical analysis was performed by a normality test, followed by a two-tailed unpaired Student's *t* test. n.s. not significant.