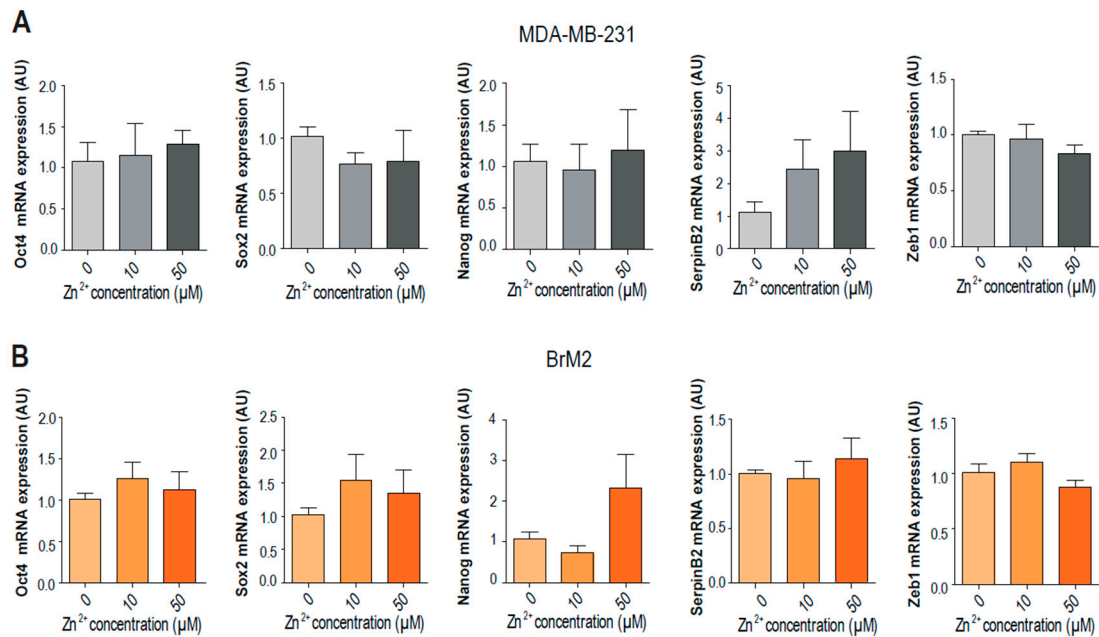
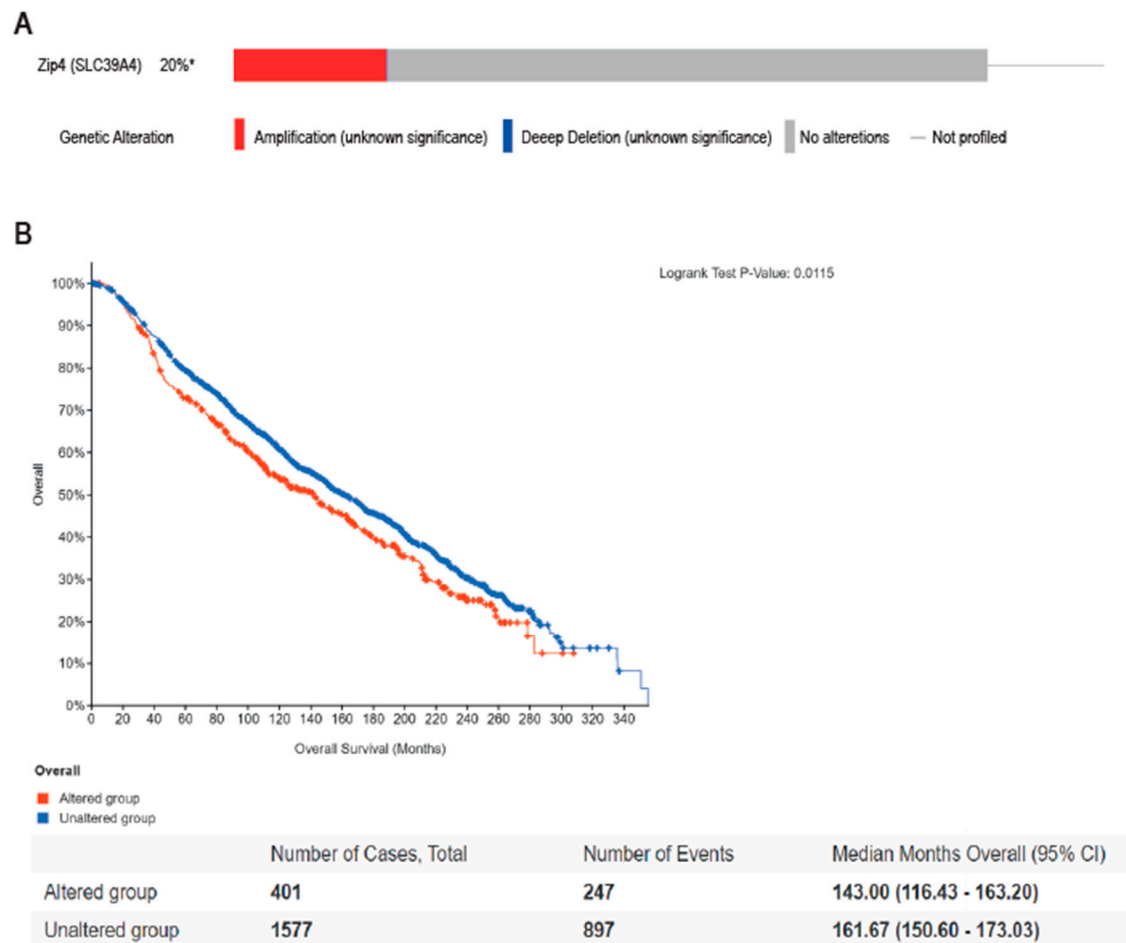


Supplementary Figure S1. SerpinB2 expression in MDA-MB-231-LM2 cells. **(A)** Representative Western blot against SerpinB2 and GAPDH in BrM2 and LM2 after 24 h of treatment with 0, 10, and 50 μM of ZnSO₄. **(B)** Quantification of SerpinB2 protein expression normalized by GAPDH protein expression in BrM2 and LM2 cells after 24 h of treatment with 0, 10, and 50 μM of ZnSO₄ (n = 2).



Supplementary Figure S2. RNA expression levels of stem-cell markers **(A)**. Real-Time RT PCRs comparing the MDA-MB-231 tumorspheres expression of Oct4, Sox2, Nanog, SerpinB2 and Zeb1 in 0, 10 and 50 μM of ZnSO₄. 2^{-DDCT} plotted using GAPDH as housekeeping gene and the 0 μM of ZnSO₄ condition as the control. (n = 4) **(B)** Real-Time RT PCRs comparing the BrM2 tumorspheres expression of Oct4, Sox2, Nanog, SerpinB2 and Zeb1 in 0, 10 and 50 μM of ZnSO₄. 2^{-DDCT} plotted using GAPDH as housekeeping gene and the 0 μM of ZnSO₄ condition as the control. (n = 3–8).



Supplementary Figure S3. Zip4 characterization in breast cancer patients. Extracted from cBioPortal for cancer genomics (METABRIC, Nature 2012 & Nat Commun 2016).