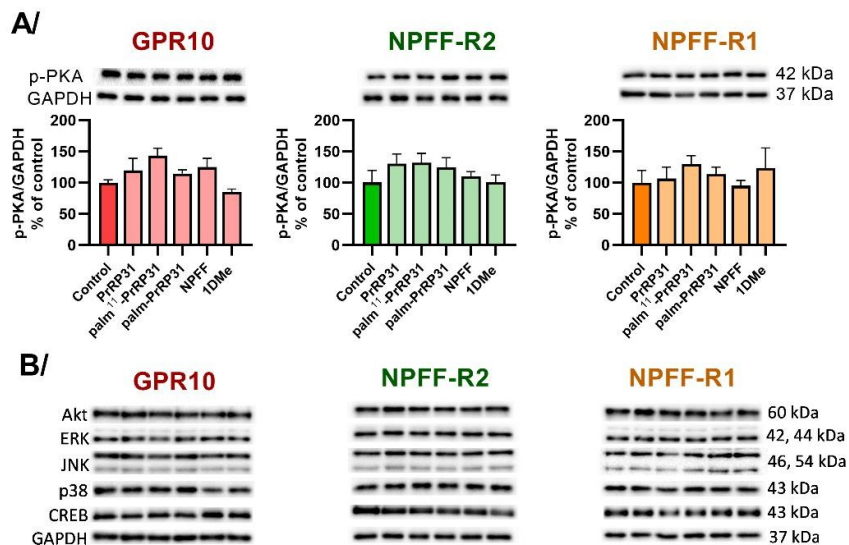
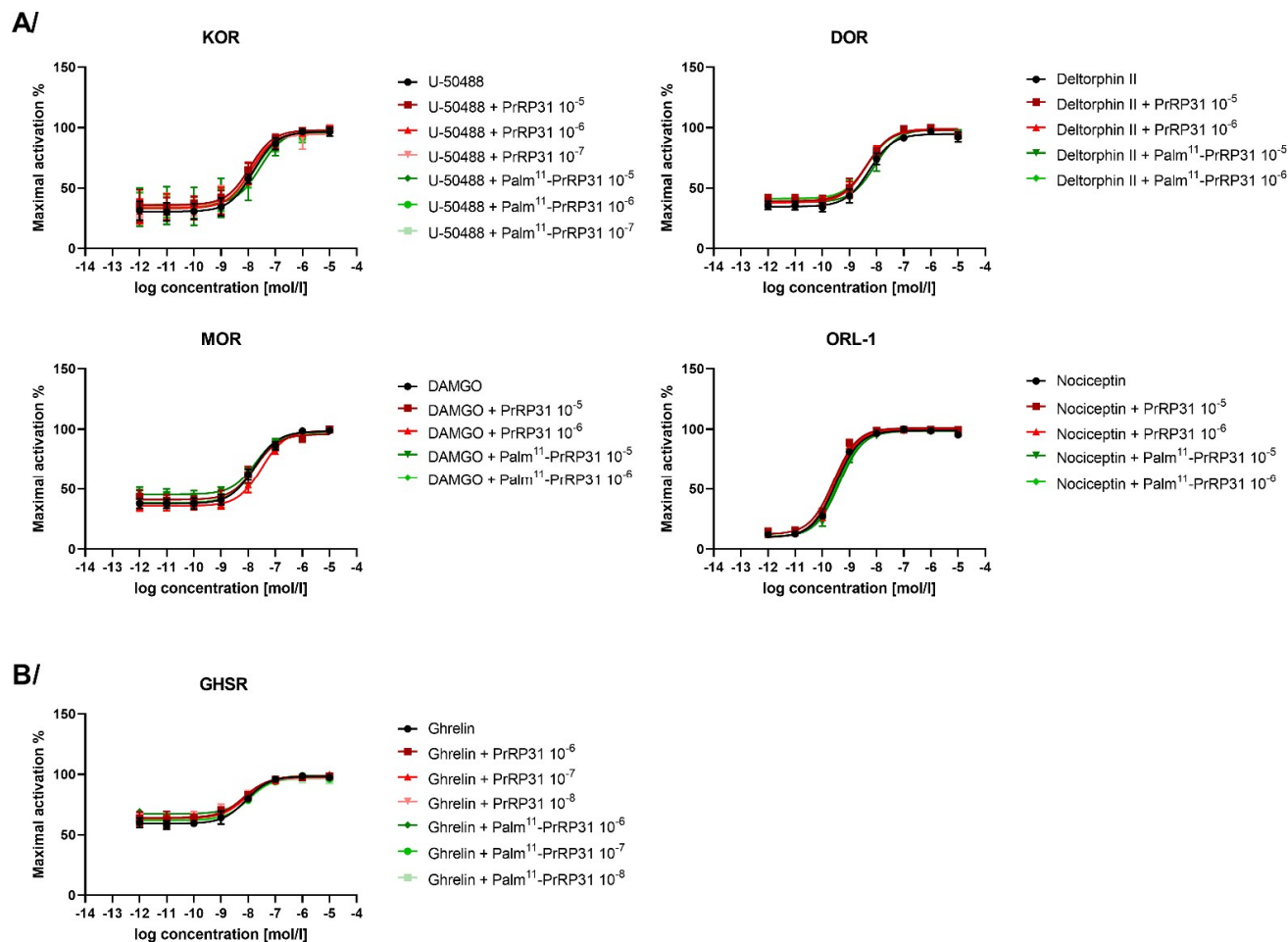


Supplementary data



Supplementary Figure S1. Induction of (A) PKA phosphorylation after 5 minutes incubation at 37°C with peptides in final concentrations 10⁻⁶ M in CHO-K1 cells expressing receptors GPR10, NPFF-R2 and NPFF-R1. Densitometric quantification was normalized to GAPDH and the phosphorylation level in the untreated control was standardized as 100% (B) total protein levels of tested signaling pathways.



Supplementary Figure S2. Antagonist mode of FRET assay showing effect of PrRP31 and palm¹¹-PrRP31 at (A) opioid receptors and (B) GHSR. Data are presented as mean \pm SEM and the experiments were performed in duplicates and repeated at least two times and analyzed using nonlinear regression