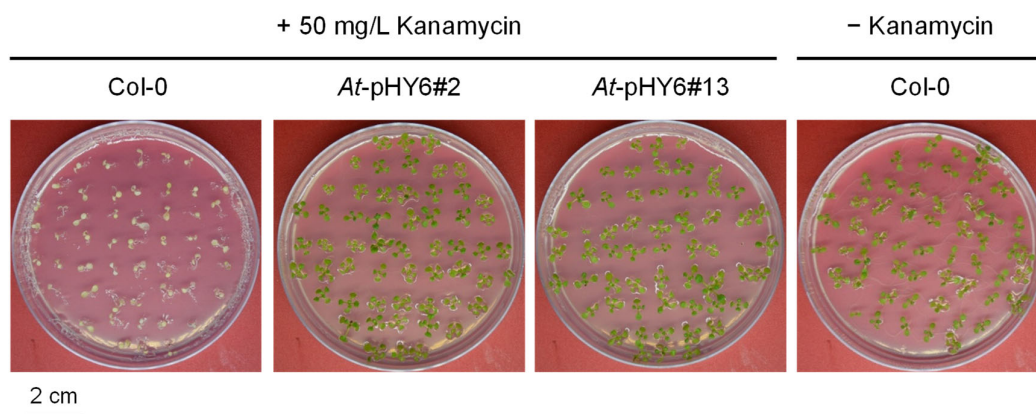
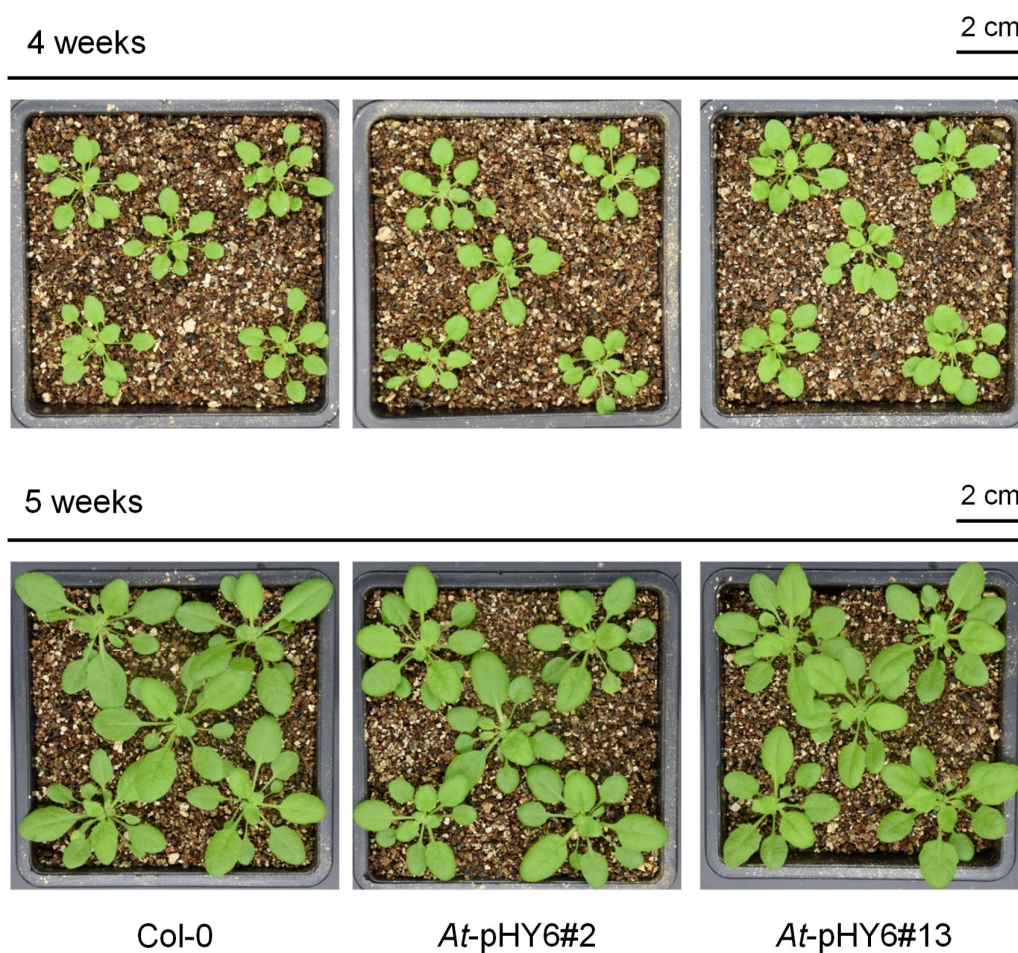


**Table S1. List of primers used in the study.**

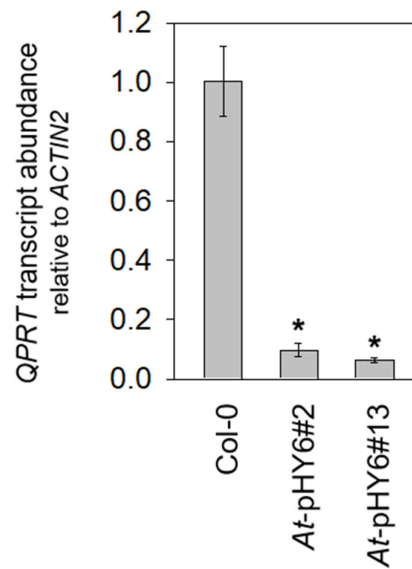
Name	Sequence (5'-3')	Technique
RiQPRT-Fwd1	<u>TCATTTGGAGAGGACACGCTCGAGGCCTCCT</u> TCACACCCTACTTAC	pHY6 construction
RiQPRT-Rev1	<u>AGCTGGGGTACCGAATTCCTCGAGTGCAATT</u> CCTCATCCTCTG	pHY6 construction
RiQPRT-Fwd2	<u>ACTCATTAAAGCAGGACTCTAGAGCCTCCTTC</u> ACACCCTACTTAC	pHY6 construction
RiQPRT-Rev2	<u>ATCGATAAGCTTGGATCCTCTAGATGCAATTC</u> CACTCATCCTCTG	pHY6 construction
q-QPRT-Fwd	TTGTCGCCTCAATTCTACGCAAT	qRT-PCR
q-QPR-Rev	ACATCTCCTGTATGACCAGCATCT	qRT-PCR
q-AOX1-Fwd	ACATCTGCTTGGATATGGACTA	qRT-PCR
q-AOX1-Rev	TCGTGCGAGCTCTAGTCCAT	qRT-PCR
q-FER1-Fwd	AACGCACTCTCGTCTTTCAC	qRT-PCR
q-FER1-Rev	ATCGGCTTTCTTCACCTCTT	qRT-PCR
q-GSTU24-Fwd	GGCGAGTATGTTTGGGATG	qRT-PCR
q-GSTU24-Rev	TTCATCTCGAGGAGCAAGG	qRT-PCR
q-OXI1-Fwd	GTTGAGGAAATCAAGGGTCATG	qRT-PCR
q-OXI1-Rev	TGGACGATATTCTCCACATCC	qRT-PCR
q-ICS1-Fwd	TTGGTGGCGAGGAGAGTG	qRT-PCR
q-ICS1-Rev	CTTCCAGCTACTATCCCTGTCC	qRT-PCR
q-PR1-Fwd	AGGCTAACTACAACCTACGCTGCG	qRT-PCR
q-PR1-Rev	GCTTCTCGTTCACATAATTCCCAC	qRT-PCR
q-PR5-Fwd	ATCGGGAGATTGCAAATACG	qRT-PCR
q-PR5-Rev	ATGACCTTAAGCATGTCGGG	qRT-PCR



**Figure S1. Seed assays confirming the homozygous status of the *QPR1* RNAi plants.** Seeds of Col-0 and the *QPR1* RNAi plants were germinated on MS medium containing 50 mg·L<sup>-1</sup> kanamycin (Col-0, *At-pHY6#2*, *At-pHY6#13*) or antibiotic-free medium (Col-0).



**Figure S2. Knockdown of *QPRT* expression by RNAi did not affect plant growth under optimal growth condition.** Representative photographs of Col-0 and *QPRT* RNAi plants.



**Figure S3**

**Figure S3. *QPRT* mRNA levels at 48 hpi.** Means  $\pm$  SE of three repetitions are shown. Asterisks indicate that values are significantly different from those of Col-0 at  $*P < 0.05$ .