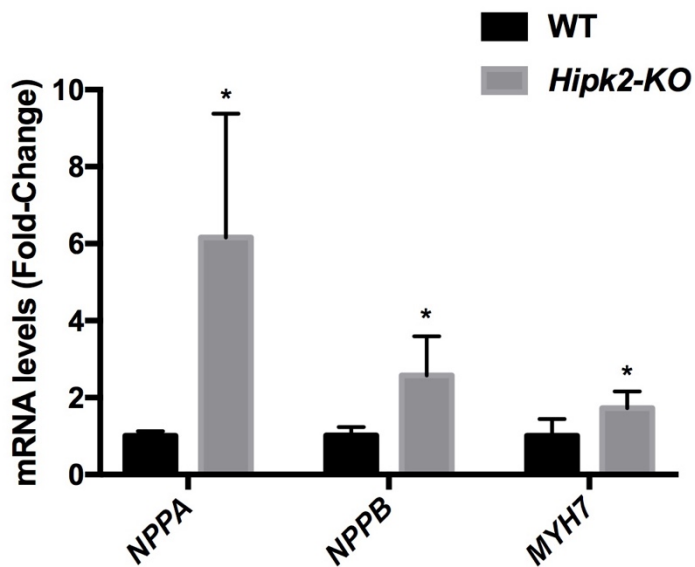


**Figure S1.** Analysis of fiber type grouping and glycogen accumulation in *Hipk2*-KO skeletal muscle. ATPase (A,C) and PAS (B,D) staining from sections of skeletal muscle of 18-month-old WT and *Hipk2*-KO mice are shown. Original magnification, 40x. One representative experiment is shown. Scale bar = 20 μm.



**Figure S2.** Analysis of expression level of heart failure markers in WT and *Hipk2*-KO mice. RNA extracted from hearts of 12-month-old WT and *Hipk2*-KO mice were analyzed by qRT-PCR for *NPPA*, *NPPB* and *MYH7* expression. The *RPS18* expression level has been used for normalization. Data are mean  $\pm$  standard deviation (SD) of a representative experiment performed in triplicate (\* $p < 0.05$ ).