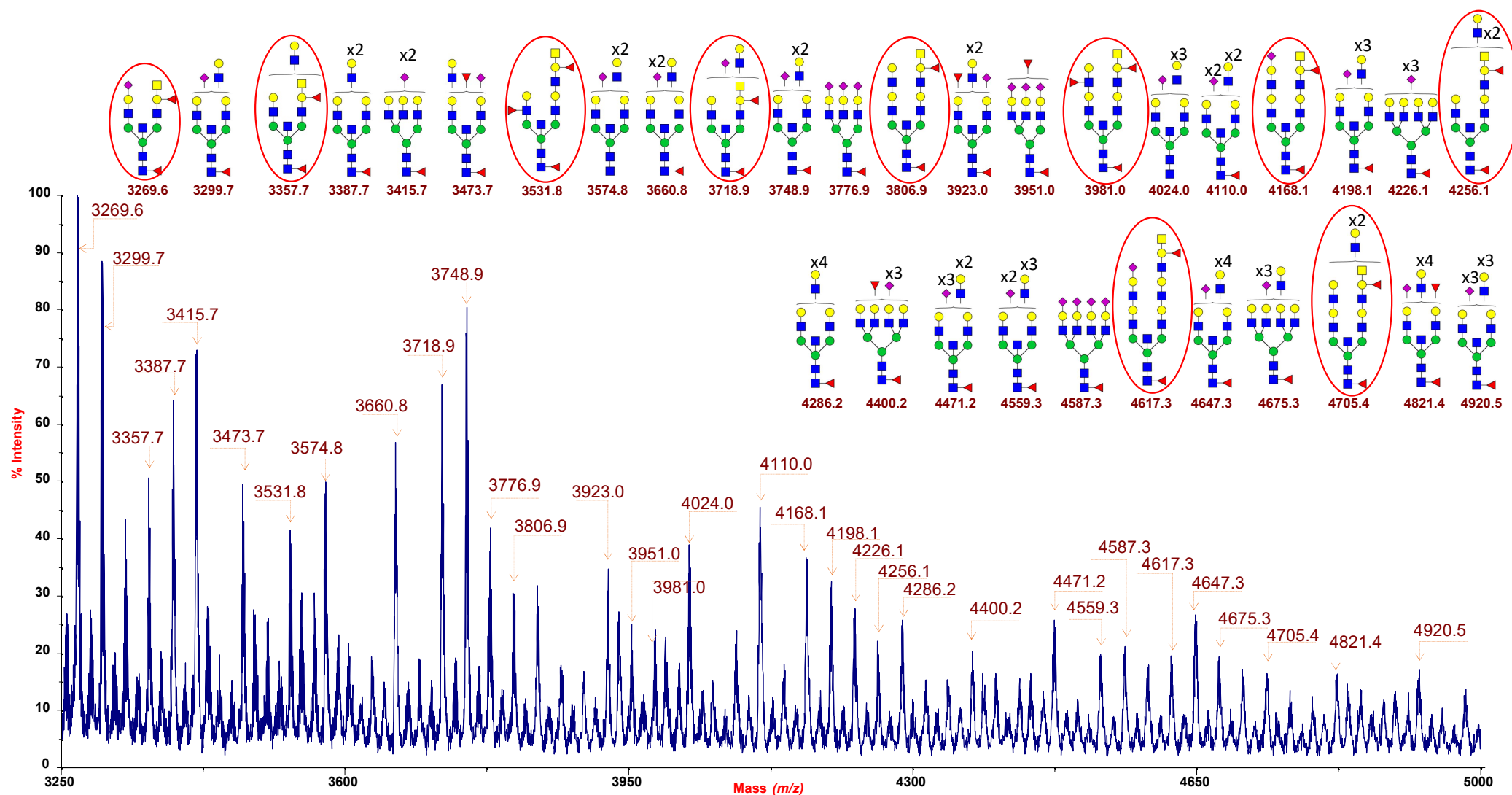
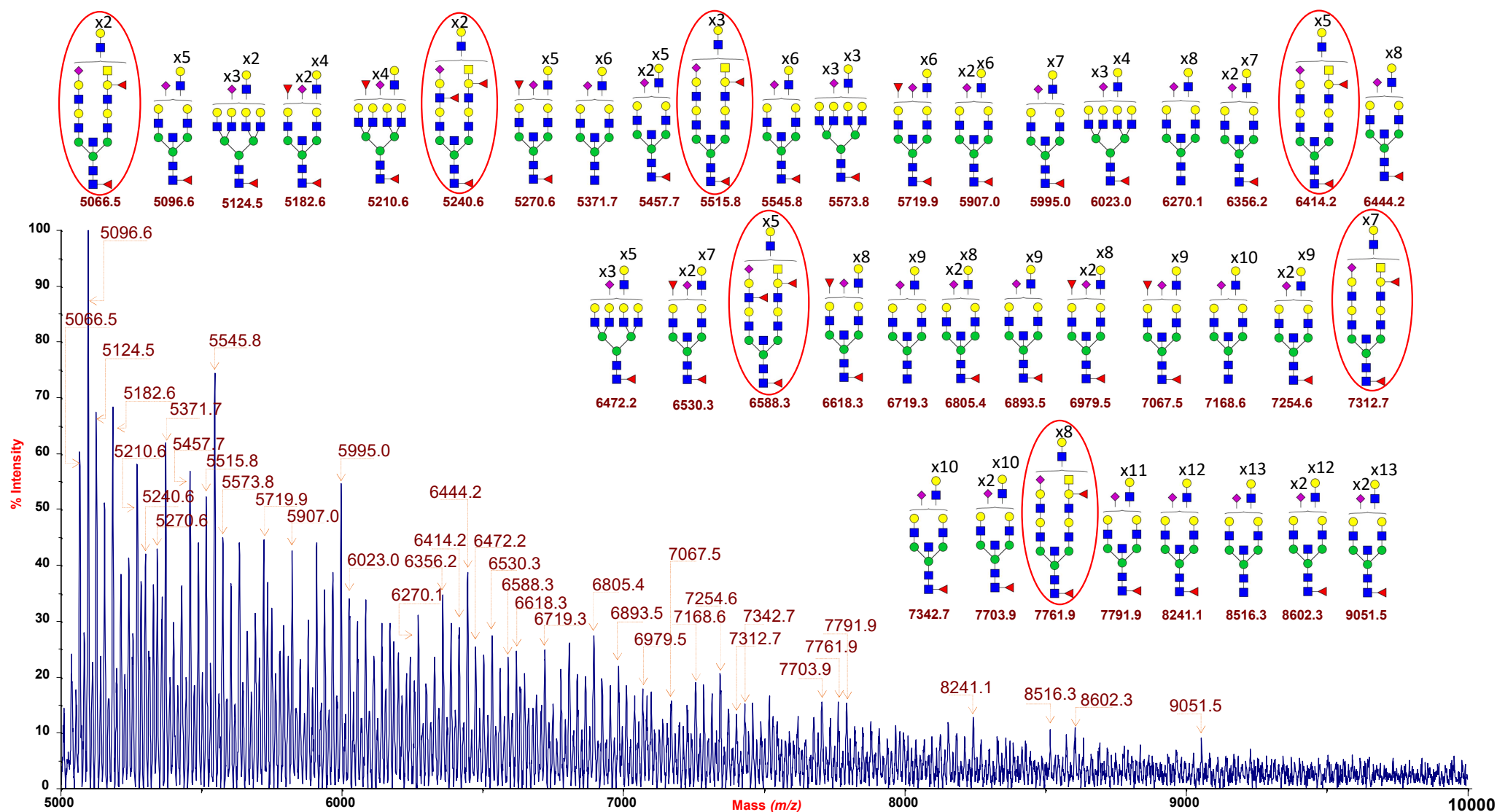


Supplementary Figure 1. MALDI-TOF MS profile (low mass-range: m/z 1500-3250) of permethylated human erythrocyte N-glycans from blood group A
 The present spectrum shows significant assignments, with those structures comprising the blood group A epitope highlighted with red circles.
 GlcNAc: blue square; Man, green circle; Gal, yellow circle; NeuAc, purple lozenge; Fuc, red triangle.



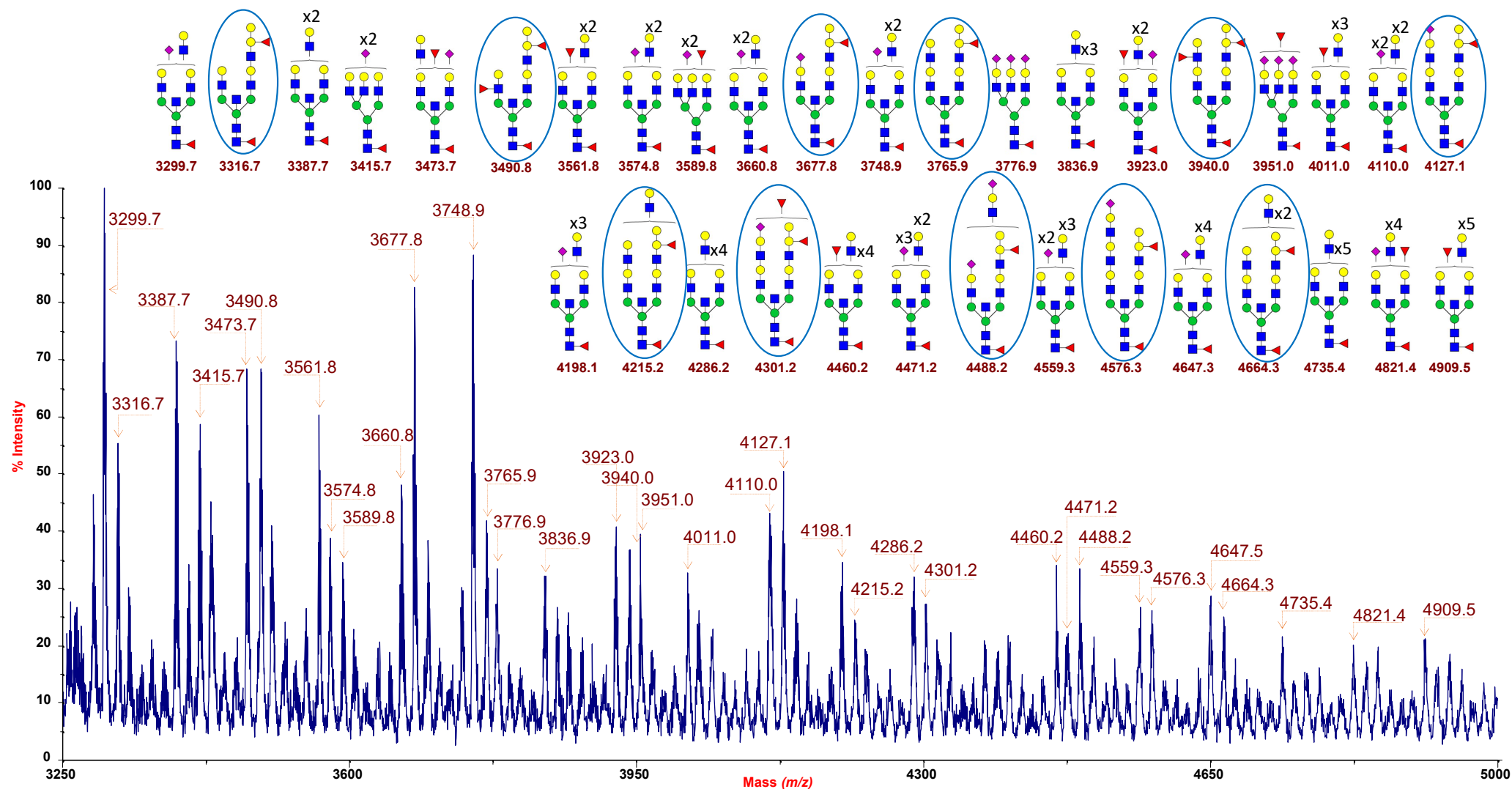
Supplementary Figure 2. MALDI-TOF MS profile (middle mass-range: m/z 3250-5000) of permethylated human erythrocyte N-glycans from blood group A
 The present spectrum shows significant assignments, with those structures comprising the blood group A epitope highlighted with red circles.
 GlcNAc: blue square; Man, green circle; Gal, yellow circle; NeuAc, purple lozenge; Fuc, red triangle.



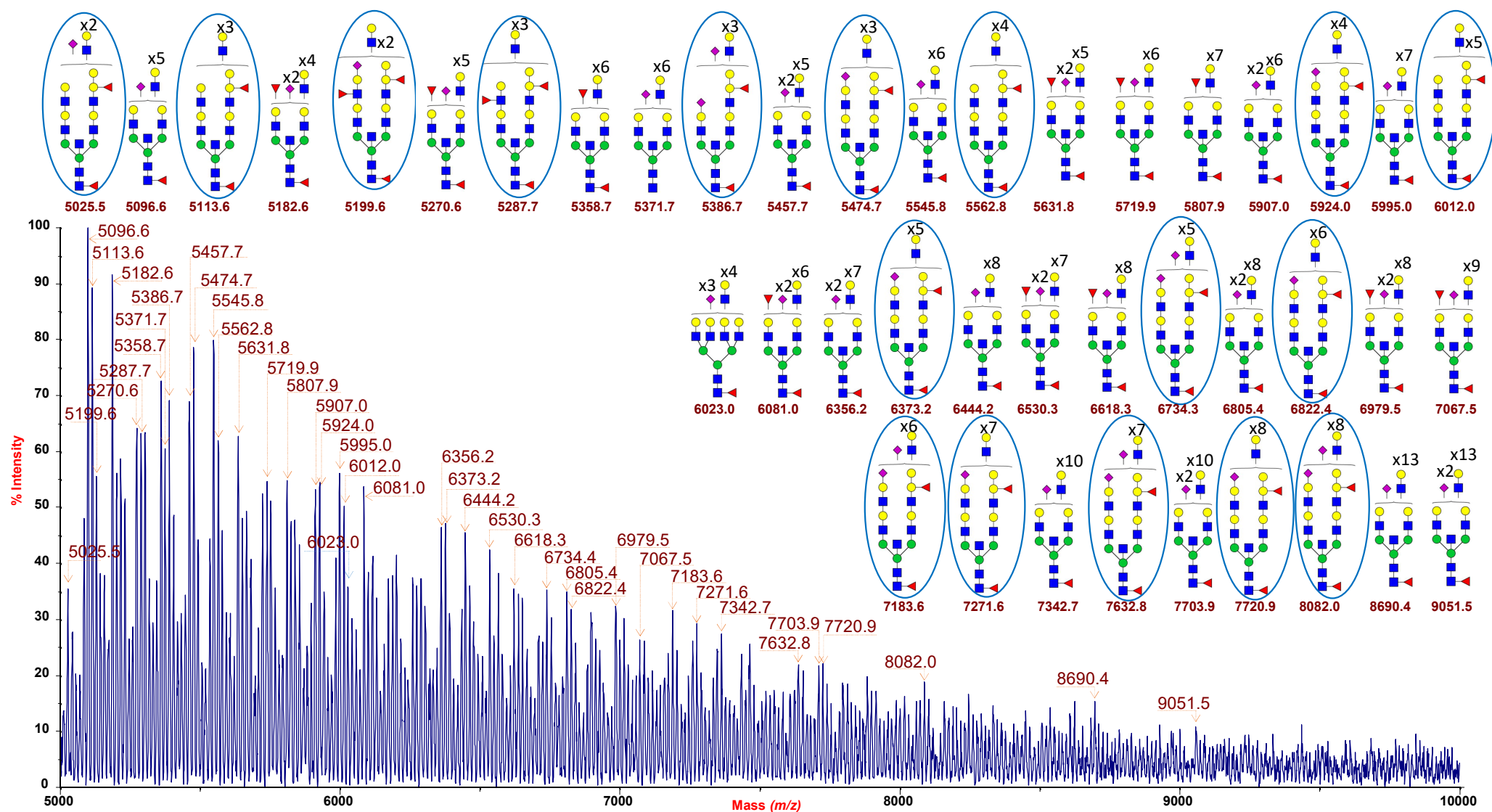
Supplementary Figure 3. MALDI-TOF MS profile (high mass-range: m/z 5000-10000) of permethylated human erythrocyte N-glycans from blood group A

The present spectrum shows significant assignments, with those structures comprising the blood group A epitope highlighted with red circles.

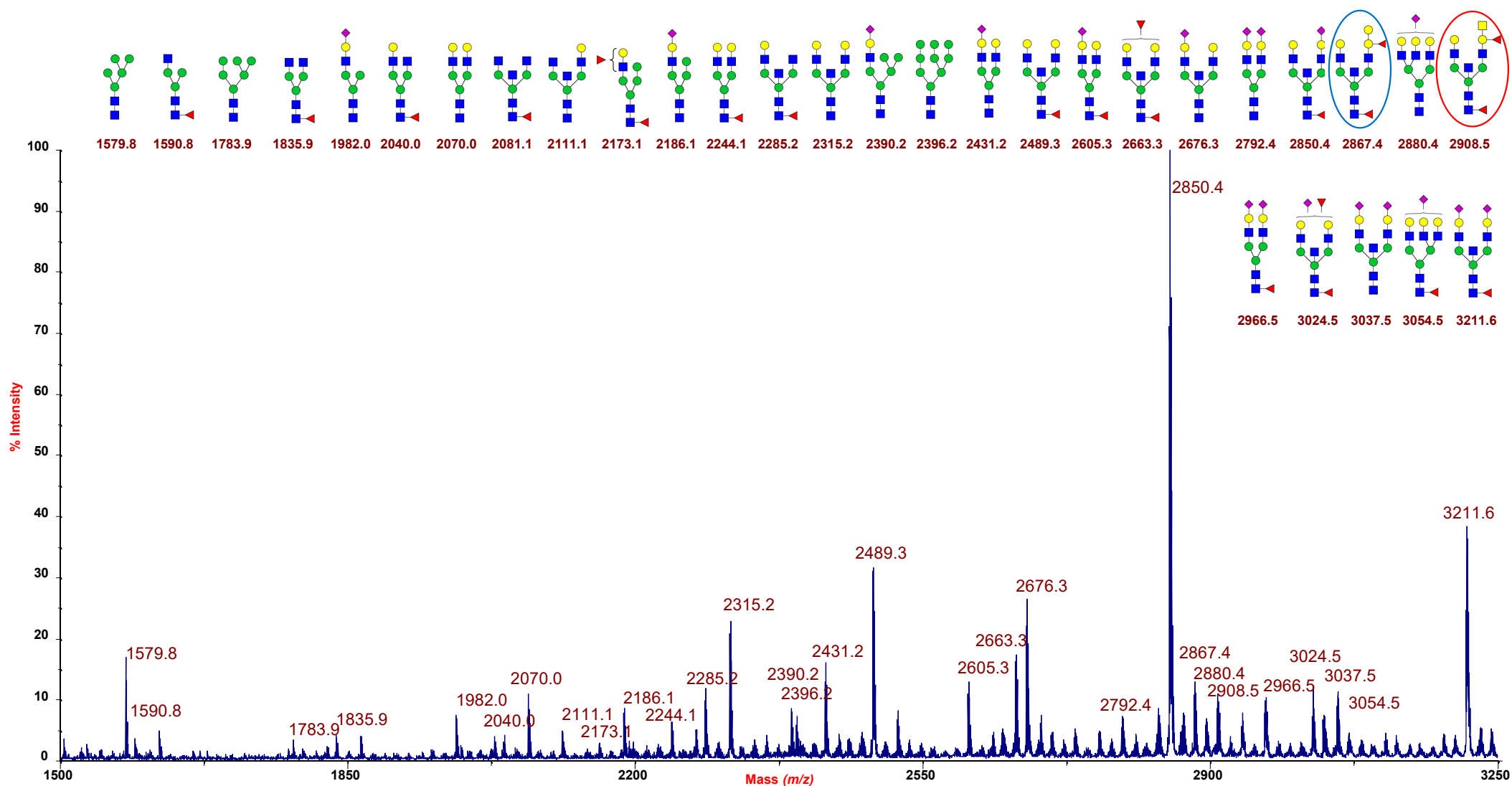
GlcNAc: blue square; Man, green circle; Gal, yellow circle; NeuAc, purple lozenge; Fuc, red triangle.



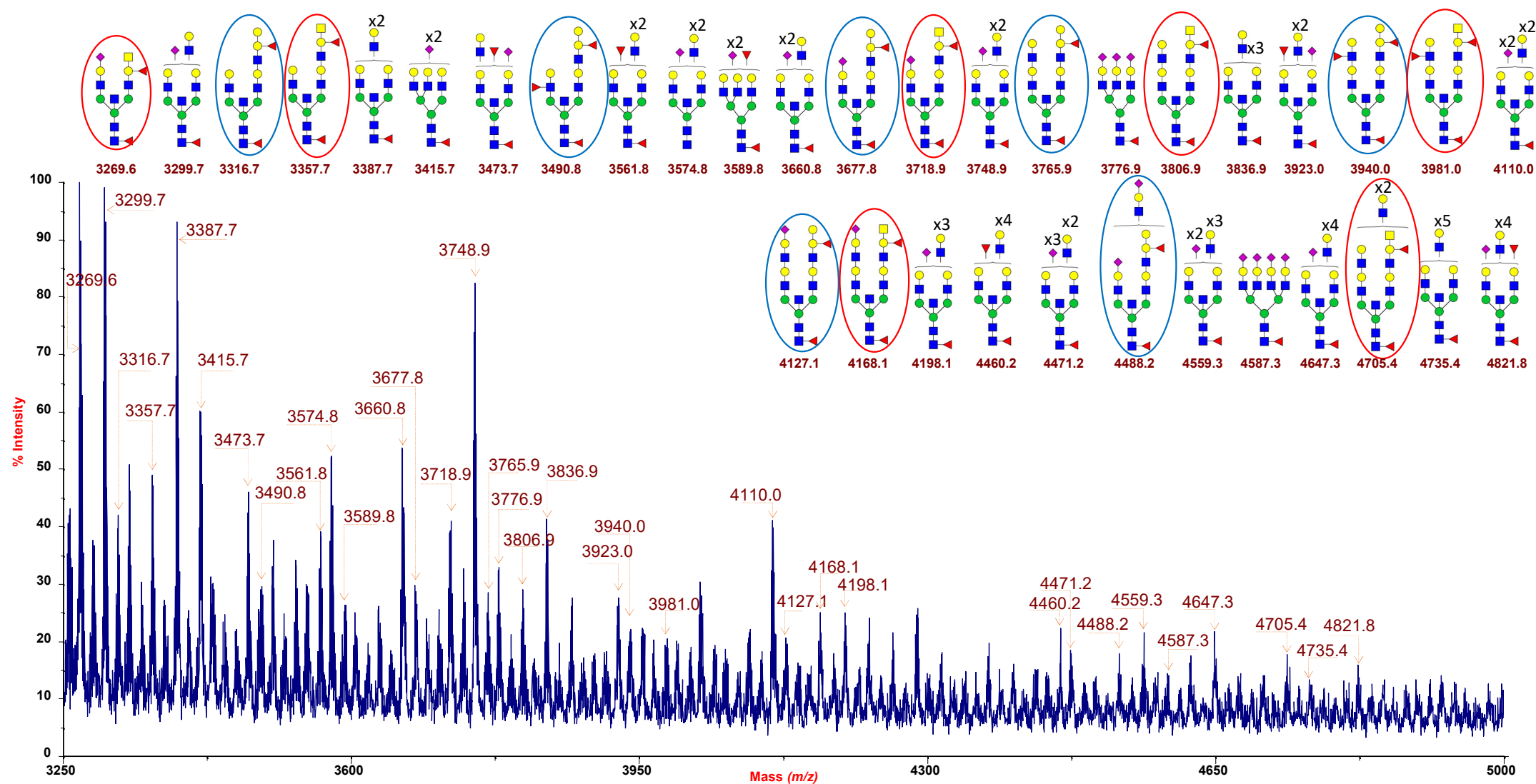
Supplementary Figure 5. MALDI-TOF MS profile (middle mass-range: m/z 3250-5000) of permethylated human erythrocyte N-glycans from blood group B
 The present spectrum shows significant assignments, with those structures comprising the blood group B epitope highlighted with blue circles.
 GlcNAc: blue square; Man, green circle; Gal, yellow circle; NeuAc, purple lozenge; Fuc, red triangle.



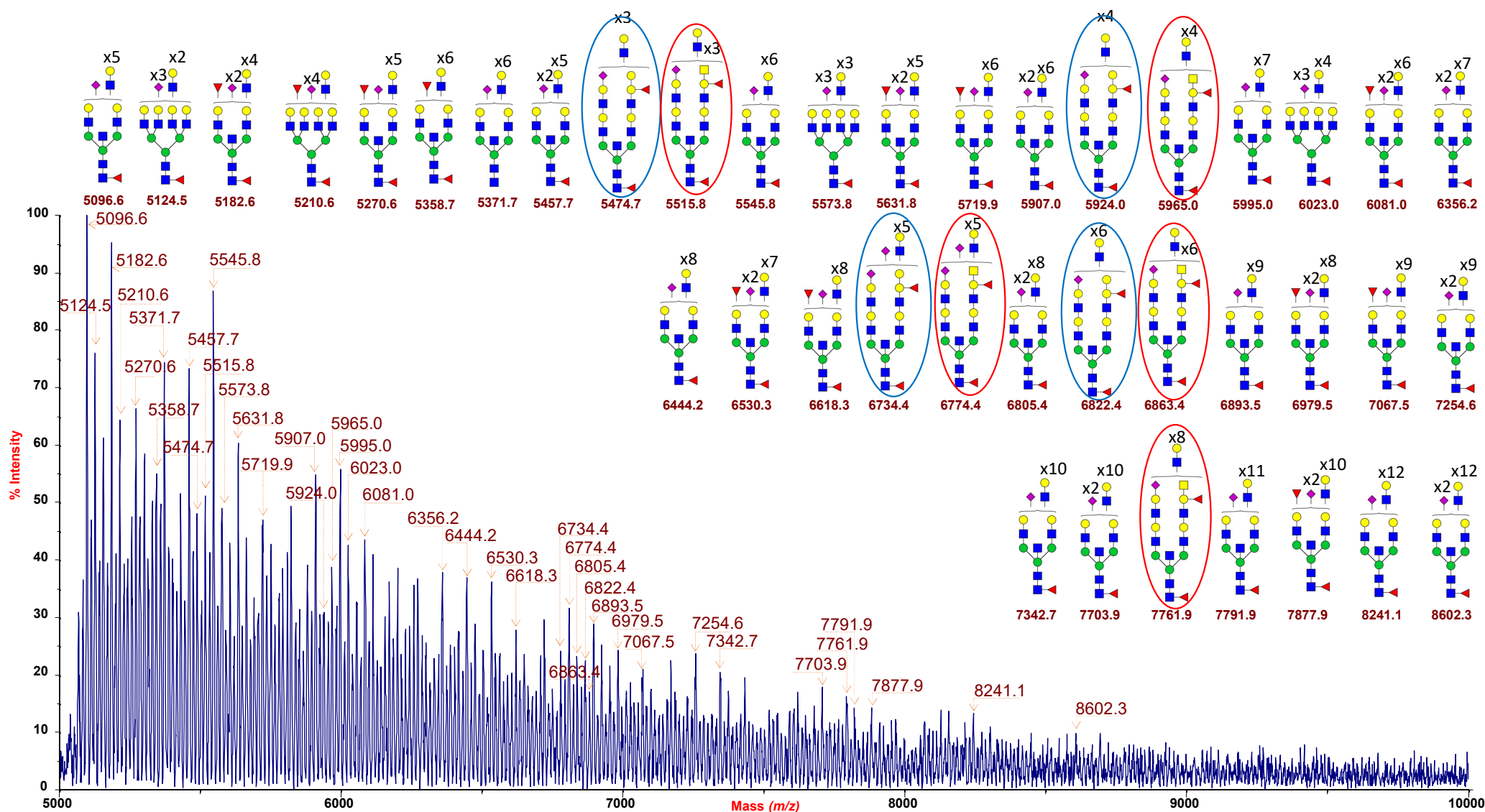
Supplementary Figure 6. MALDI-TOF MS profile (high mass-range: m/z 5000-10000) of permethylated human erythrocyte N-glycans from blood group B
 The present spectrum shows significant assignments, with those structures comprising the blood group B epitope highlighted with blue circles.
 GlcNAc: blue square; Man, green circle; Gal, yellow circle; NeuAc, purple lozenge; Fuc, red triangle.



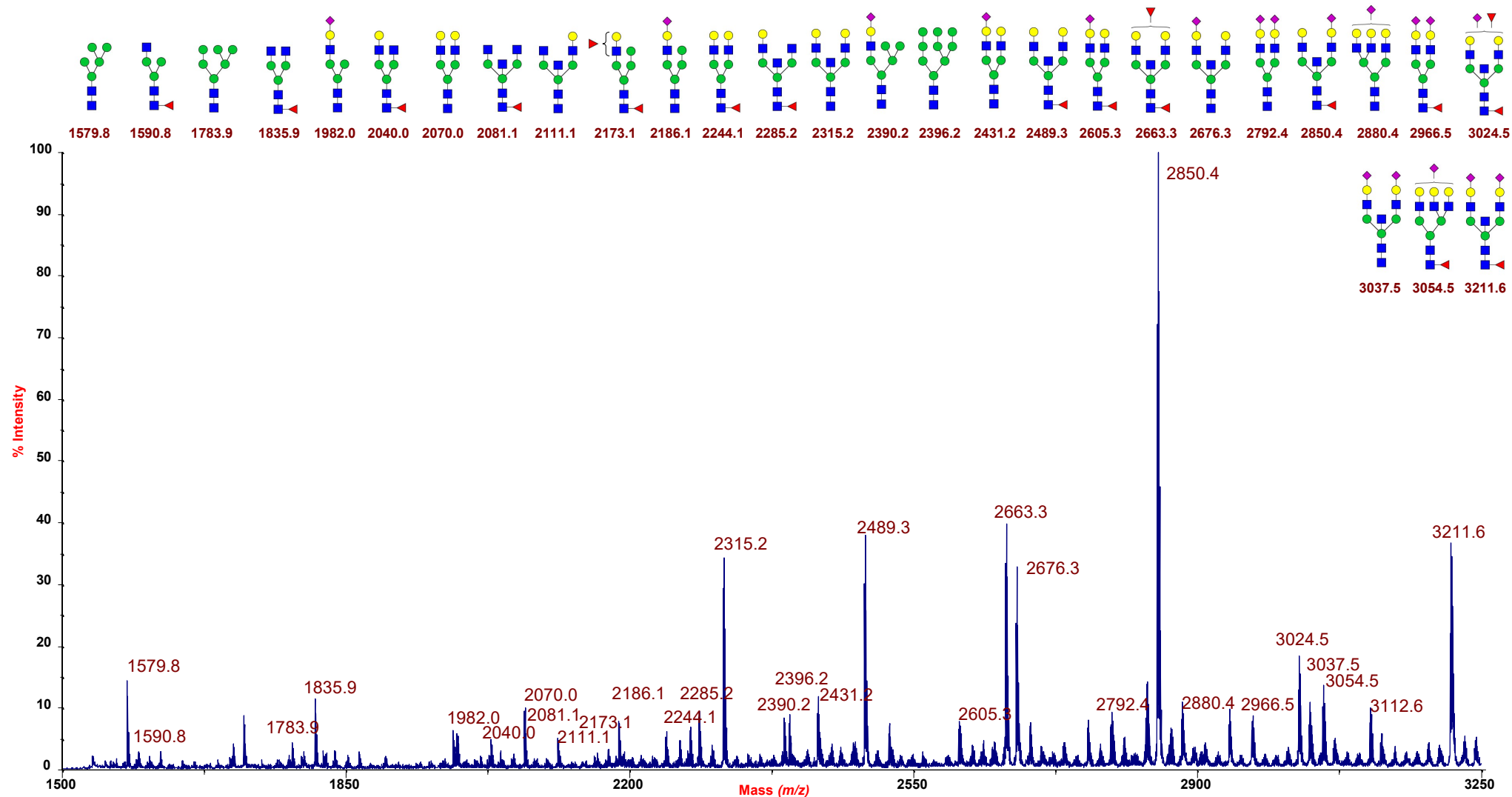
Supplementary Figure 7. MALDI-TOF MS profile (low mass-range: m/z 1500-3250) of permethylated human erythrocyte N-glycans from blood group AB
 The present spectrum shows significant assignments, with those structures comprising blood group A or B epitopes highlighted with red or blue circles, respectively. GlcNAc: blue square; Man, green circle; Gal, yellow circle; NeuAc, purple lozenge; Fuc, red triangle.



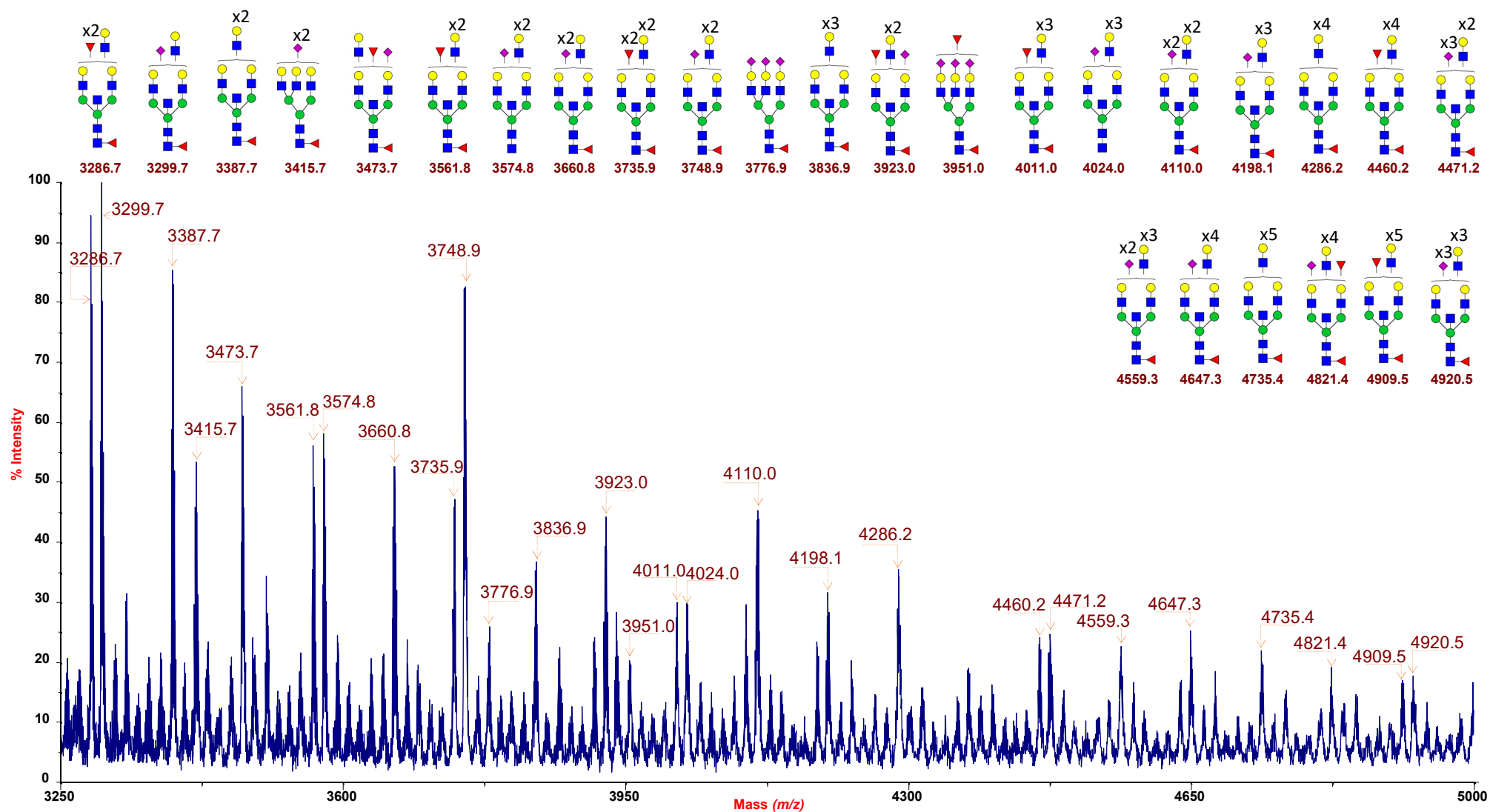
Supplementary Figure 8. MALDI-TOF MS profile (middle mass-range: m/z 3250-5000) of permethylated human erythrocyte N-glycans from blood group AB
 The present spectrum shows significant assignments, with those structures comprising blood group A or B epitopes highlighted with red or blue circles, respectively.
 GlcNAc: blue square; Man, green circle; Gal, yellow circle; NeuAc, purple lozenge; Fuc, red triangle.



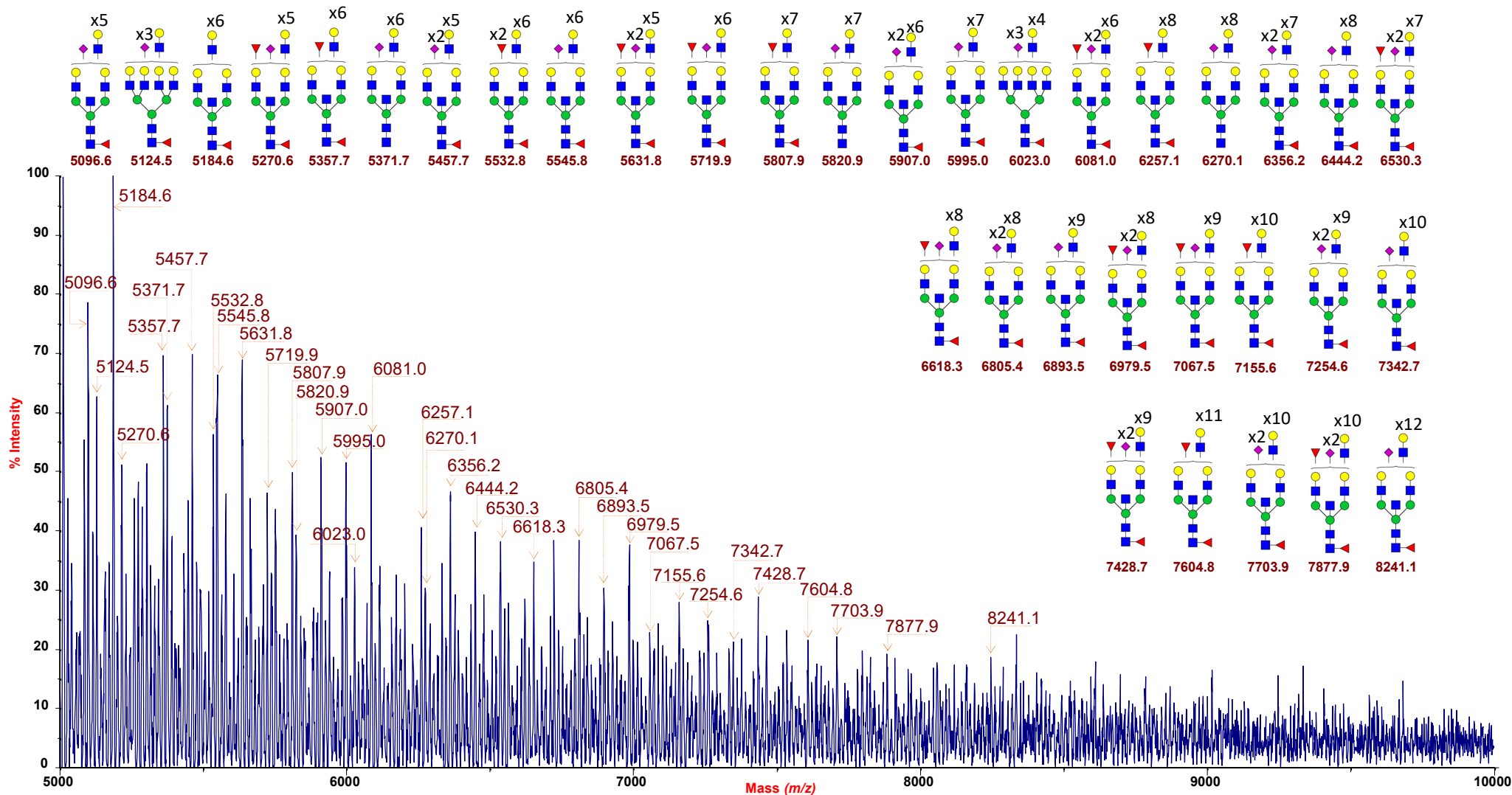
Supplementary Figure 9. MALDI-TOF MS profile (high mass-range: m/z 5000-10000) of permethylated human erythrocyte N-glycans from blood group AB
The present spectrum shows significant assignments, with those structures comprising blood group A or B epitopes highlighted with red or blue circles, respectively. GlcNAc: blue square; Man, green circle; Gal, yellow circle; NeuAc, purple lozenge; Fuc, red triangle.



Supplementary Figure 10. MALDI-TOF MS profile (low mass-range: m/z 1500-3250) of permethylated human erythrocyte N-glycans from blood group O
 The present spectrum shows significant assignments characterized by the absence of distinctive H antigen-bearing structures.
 GlcNAc: blue square; Man, green circle; Gal, yellow circle; NeuAc, purple lozenge; Fuc, red triangle.



Supplementary Figure 11. MALDI-TOF MS profile (middle mass-range: m/z 3250-5000) of permethylated human erythrocyte N-glycans from blood group O
The present spectrum shows significant assignments characterized by the absence of distinctive H antigen-bearing structures.
GlcNAc: blue square; Man, green circle; Gal, yellow circle; NeuAc, purple lozenge; Fuc, red triangle.



Supplementary Figure 12. MALDI-TOF MS profile (high mass-range: m/z 5000-10000) of permethylated human erythrocyte N-glycans from blood group O
 The present spectrum shows significant assignments characterized by the absence of distinctive H antigen-bearing structures.
 GlcNAc: blue square; Man, green circle; Gal, yellow circle; NeuAc, purple lozenge; Fuc, red triangle.