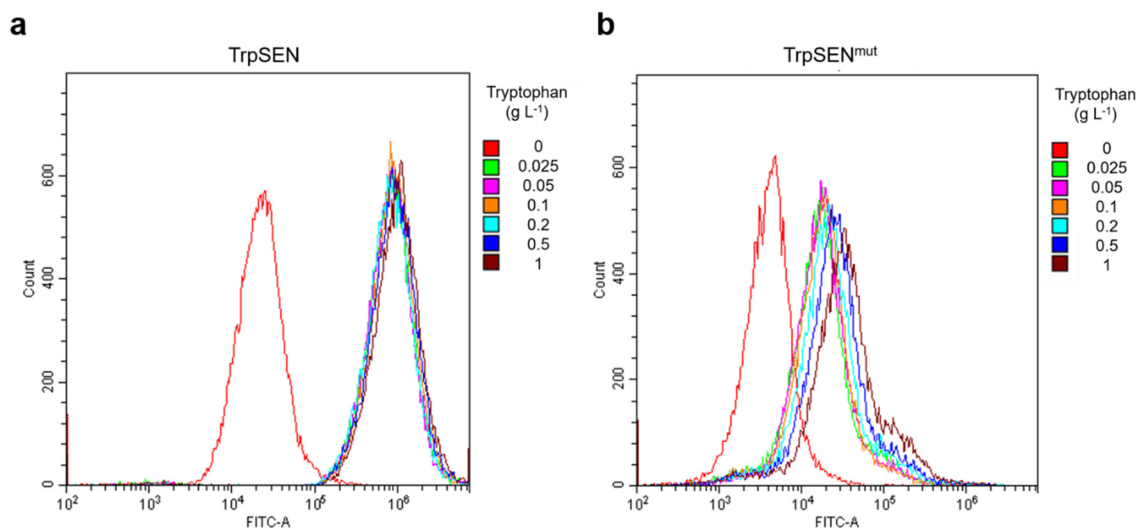


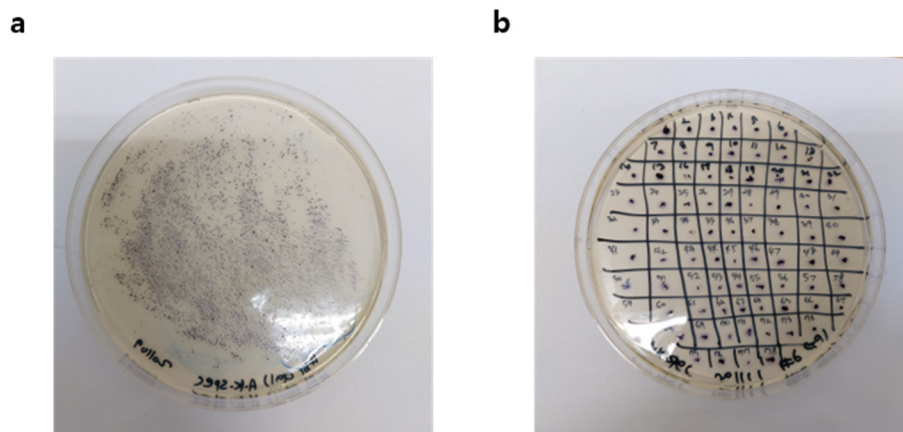
Supplementary Information

Biosensor-assisted adaptive laboratory evolution for violacein production

Da-ae Gwon, Joo Yeon Seok, Gyoo Yeol Jung, and Jeong Wook Lee



Supplementary Figure S1. FITC Histogram according to tryptophan concentration. (a) TrpSEN containing the wild-type *tnaC* (b) TrpSEN^{mut} containing mutant *tnaC*



Supplementary Figure S2. Photo of colonies after transformation (a) Colonies after transformation of pVio into EPWSV2 (b) Among 70 colonies were selected