

Figure S1. BUSCO assessments shows the quality of transcriptome assembled unigenes. C:complete, D: Duplicated, F: fragments, M: missing

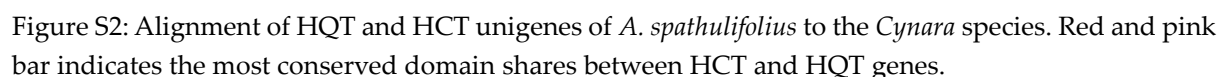


Figure S2: Alignment of HQT and HCT unigenes of *A. spathulifolius* to the *Cynara* species. Red and pink bar indicates the most conserved domain shares between HCT and HQT genes.

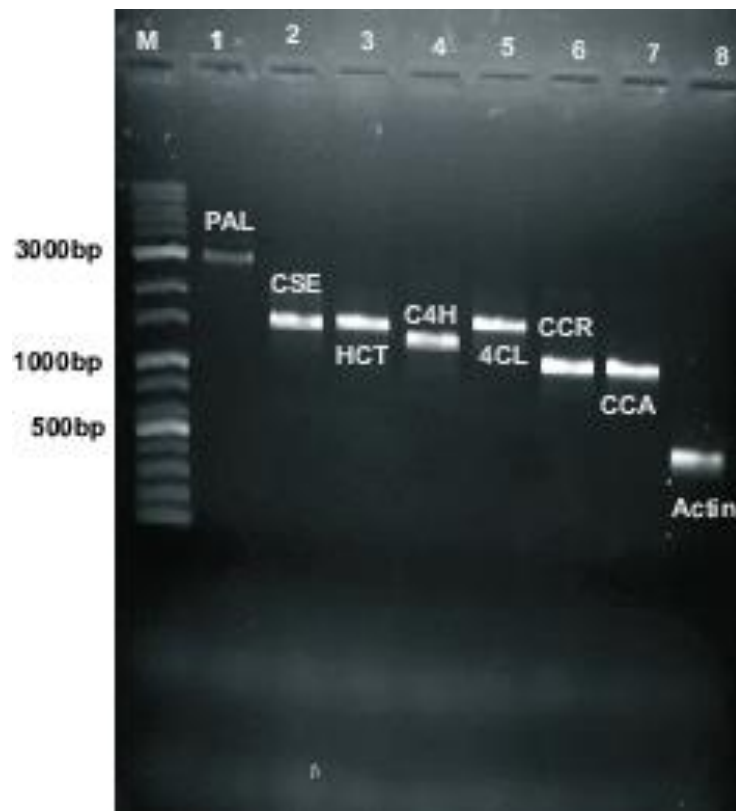


Figure S3 : RT-PCR conformation of PPP unigene in *A. spathulifolius* leaf of *denovo* assembled unigenes.