

SUPPLEMENTARY MATERIAL

FLUORESCENCE STUDY OF RIBOFLAVIN INTERACTIONS WITH GRAPHENE DISPERSED IN BIOACTIVE TANNIC ACID

María Paz San Andrés^{1,2*}, Marina Baños-Cabrera¹, Lucía Gutiérrez-Fernández, Ana María Díez-Pascual^{1,2}, Soledad Vera-López^{1,2}.

¹Universidad de Alcalá, Facultad de Ciencias, Departamento de Química Analítica, Química Física e Ingeniería Química, Ctra. Madrid-Barcelona Km. 33.6, 28805 Alcalá de Henares, Madrid, España (Spain).

²Universidad de Alcalá, Instituto de Investigación Química Andrés M. del Río (IQAR), Ctra. Madrid-Barcelona Km. 33.6, 28805 Alcalá de Henares, Madrid, España (Spain).

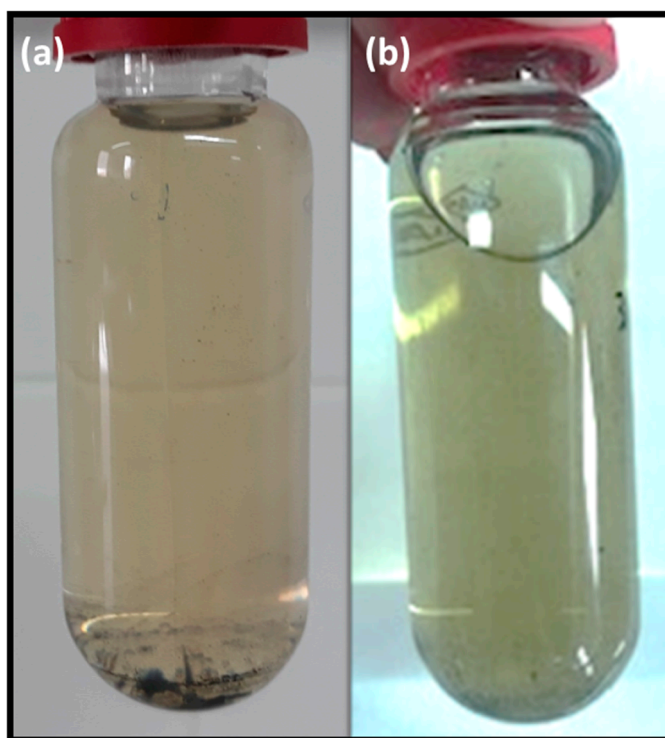


Figure S1. Representative photographs of a G 0.5% dispersion in TA 2.0 g L⁻¹ at pH 4.1 (a) and pH 7.1 (b) after one week.

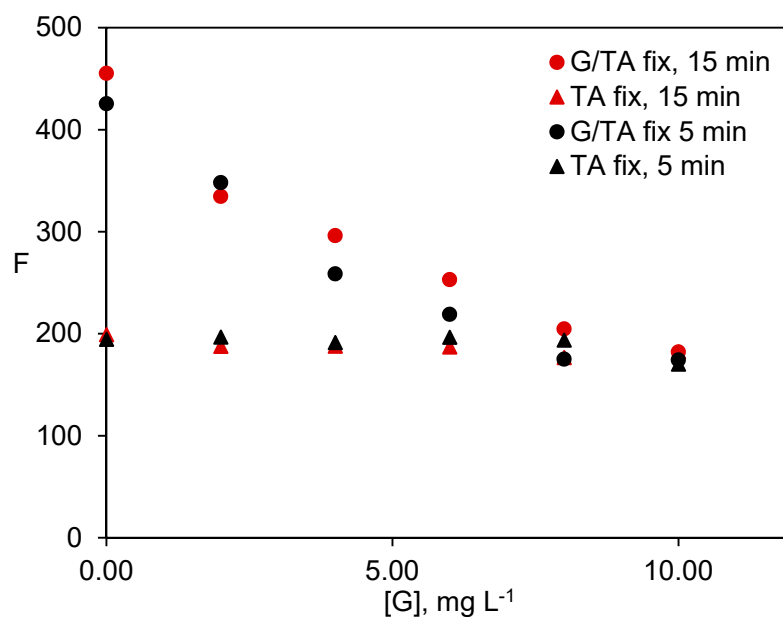


Figure S2. Comparison of the effect of time sonication (5 and 15 min) for G 0.5% w/w dispersions in tannic acid 2.0 g L⁻¹ for the two series studied in this work ($\lambda_{\text{ex}}/\lambda_{\text{em}} = 455/520$ nm; pH=4.1).

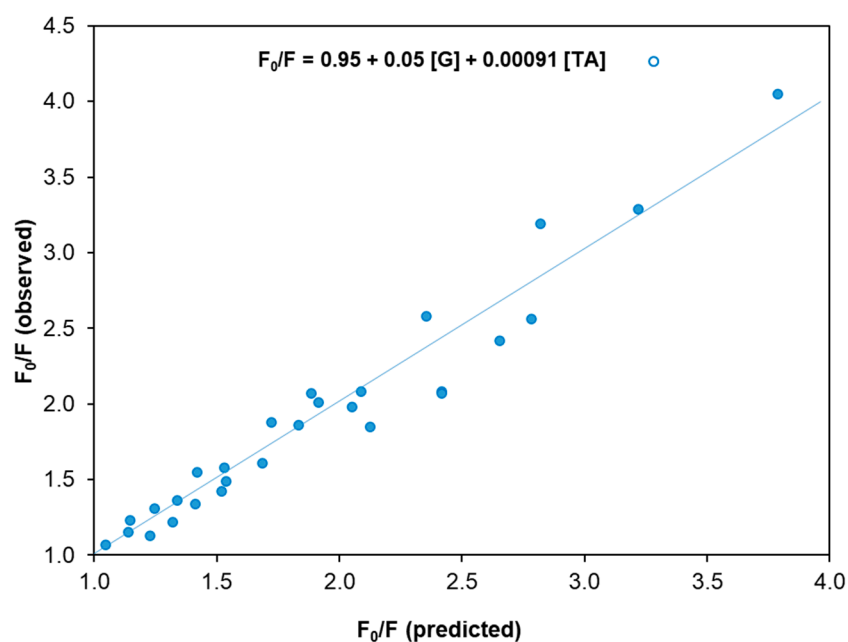


Figure S3. Multiple linear regression for F_0/F obtained with all concentrations of G and TA in solutions with variable TA concentration. [Riboflavin]=0.6 mg L⁻¹, $\lambda_{\text{exc}}/\lambda_{\text{em}} = 455/520$ nm, pH=7.1.

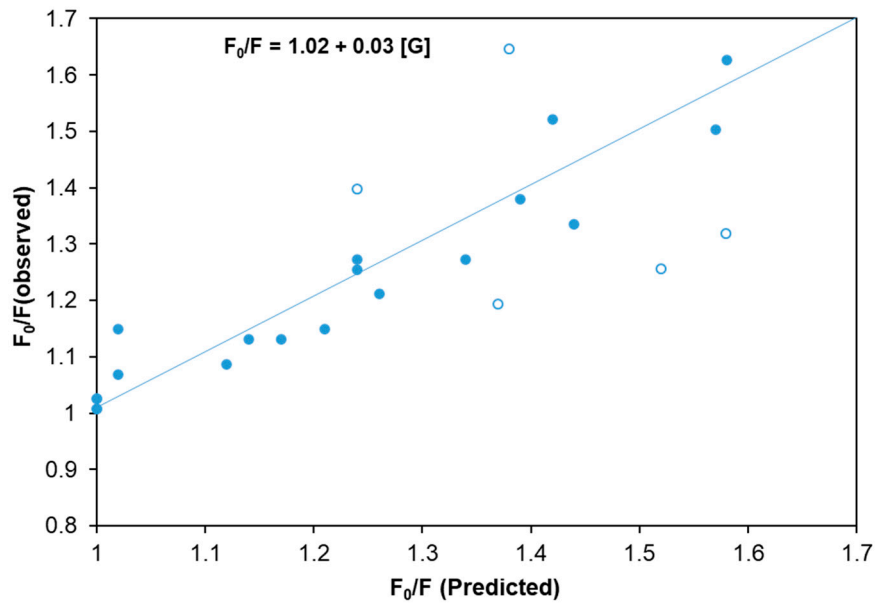


Figure S4. Multiple linear regression for F_0/F obtained with all G concentrations and TA 2.0 g L^{-1} and 0.5 g L^{-1} for a constant TA concentration 0.5 mg L^{-1} and 2.0 mg L^{-1} . [Riboflavin] = 0.6 mg L^{-1} 455/520 nm, pH=7.1.