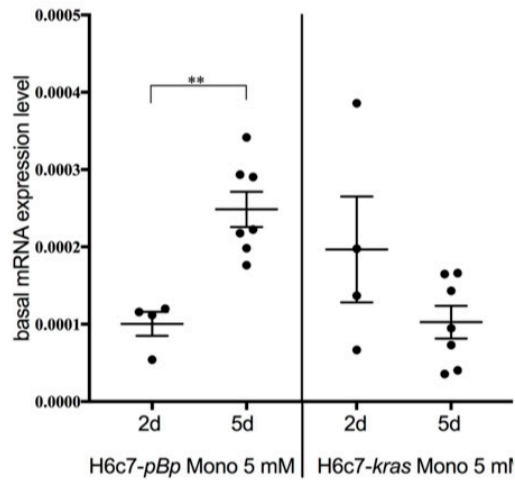


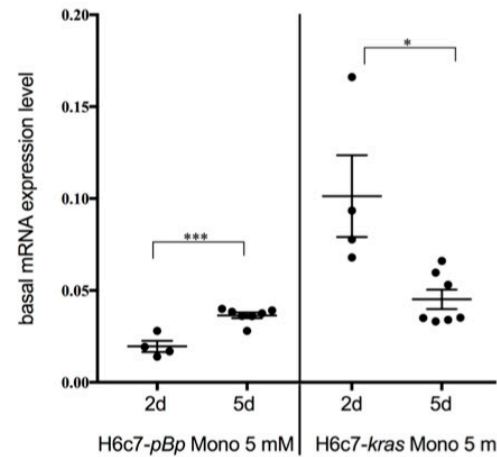
A

IL-6

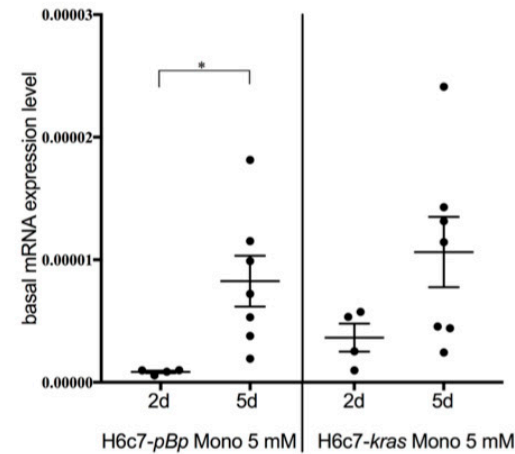


B

IL-8



C

TNF- α 

D

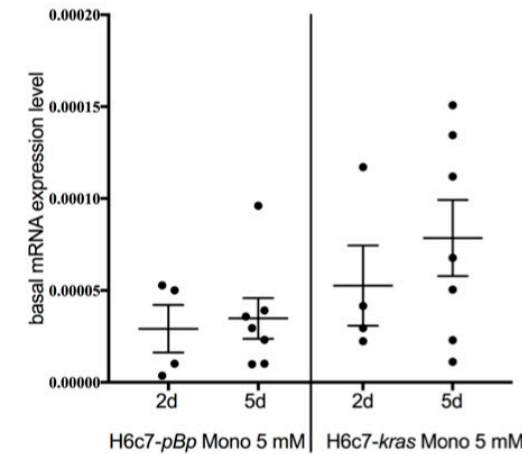
TGF- β 1

Figure S1: Basal mRNA levels of EMT- and CSC-inducers in benign and premalignant PDEC. H6c7-pBp or H6c7-kras cells were monocultured for 2 or 5 days under normoglycaemic conditions (5 mM D-glucose). RNA was isolated and analysed by qRT-PCR analysis. The relative mRNA levels of IL-6 (A), IL-8 (B), TNF- α (C) and TGF- β 1 (D) are depicted, normalized to the housekeeping gene GAPDH and presented as basal mRNA expression level. Data are presented as mean and standard error of mean.

*: $0.05 > p > 0.0332$ **: $0.0331 > p > 0.0021$; ***: $0.002 > p > 0.0001$; n= 4 for 2-day culture, n=7 for 5-day culture