



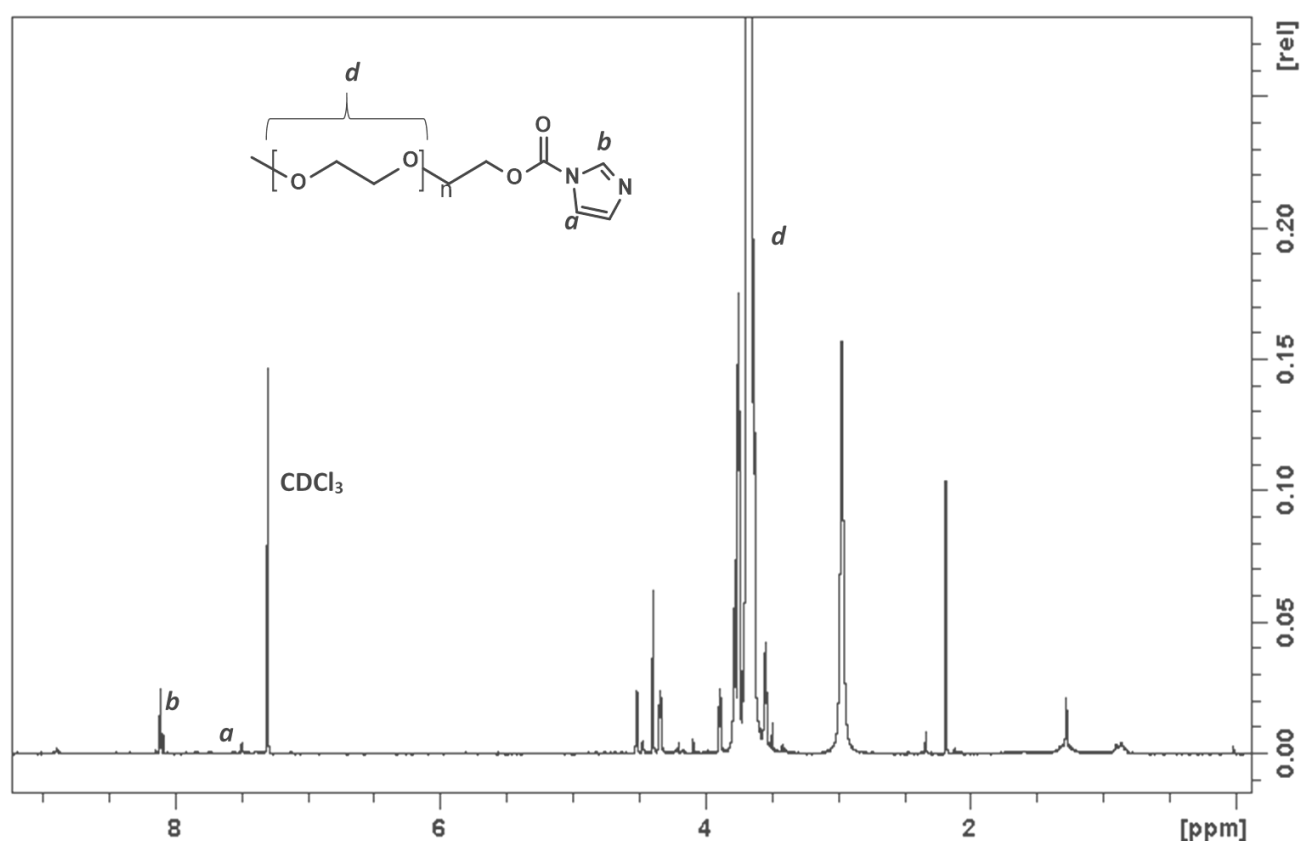
## Modified Gold Nanoparticles for efficient Delivery of Betulinic Acid to Cancer Cell Mitochondria

Olakunle Oladimeji<sup>1</sup>, Jude Akinnyelu<sup>1</sup>, Aliscia Daniels<sup>1</sup>, Moganavelli Singh<sup>1\*</sup>

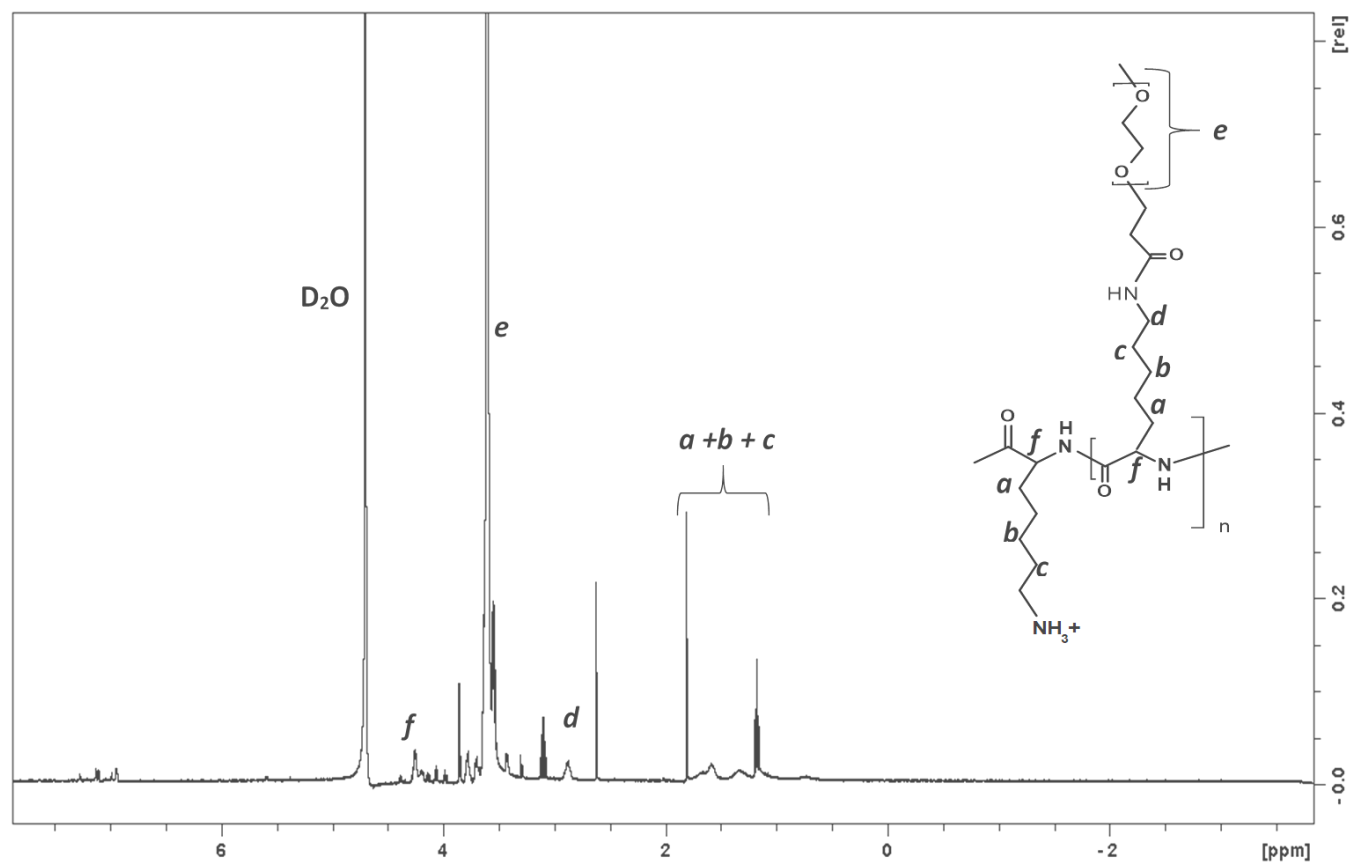
<sup>1</sup>Nano-Gene and Drug Delivery Group, Discipline of Biochemistry, School of Life Sciences, University of KwaZulu-Natal, Private Bag X54001, Durban, South Africa

\*Correspondence: Moganavelli Singh    singhm1@ukzn.ac.za

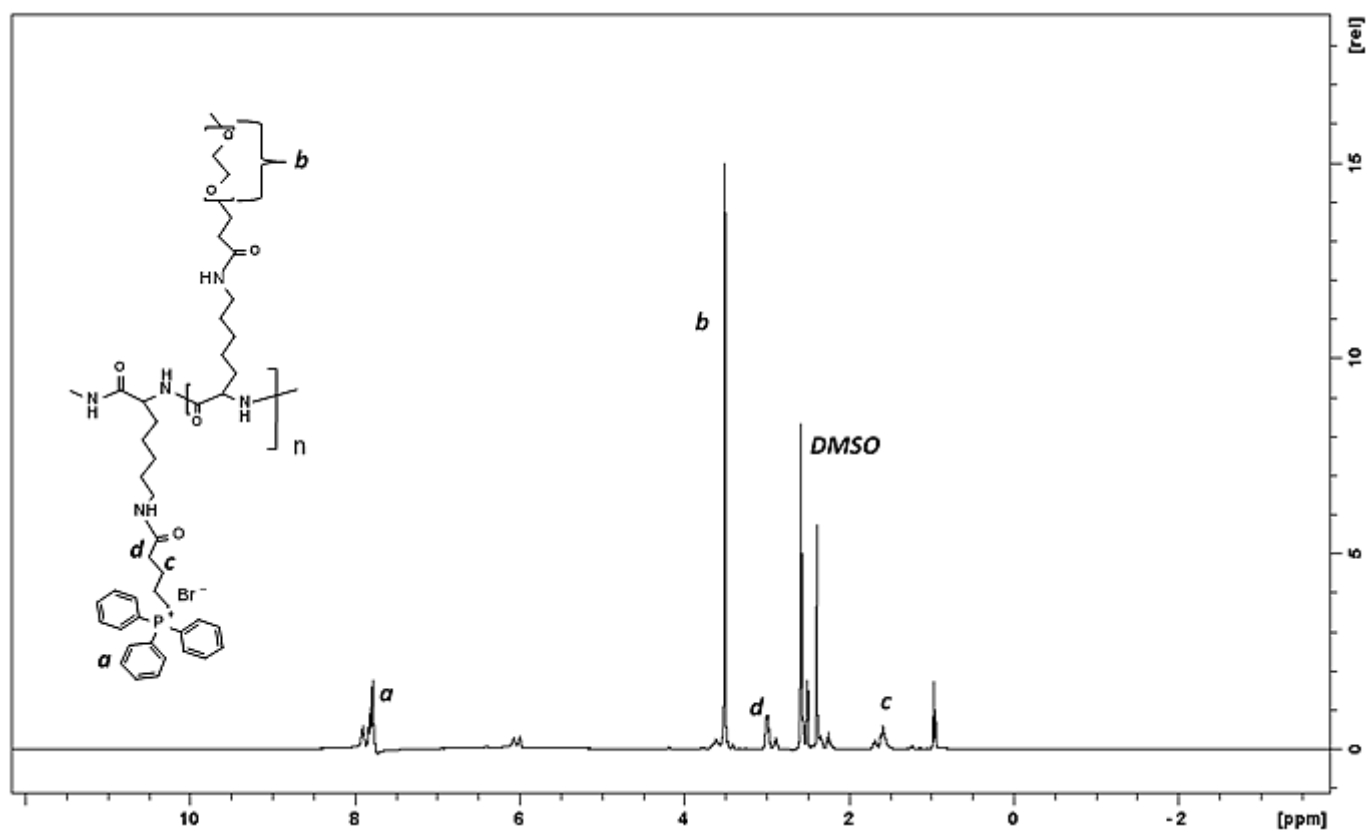
### Supplementary Material



Supplementary Figure S1. <sup>1</sup>H NMR of PEG-CI in CDCl<sub>3</sub>



**Supplementary Figure S2.**  $^1\text{H}$  NMR PLL-g-PEG in  $\text{D}_2\text{O}$ .



Supplementary Figure S3.  $^1\text{H}$  NMR PLL-g-PEG-TPP $^+$  in DMSO.