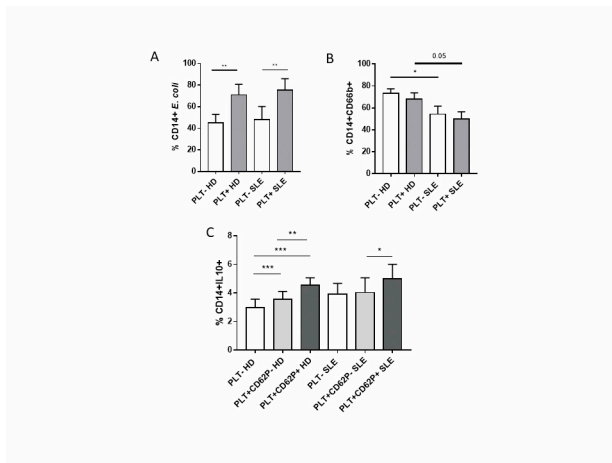
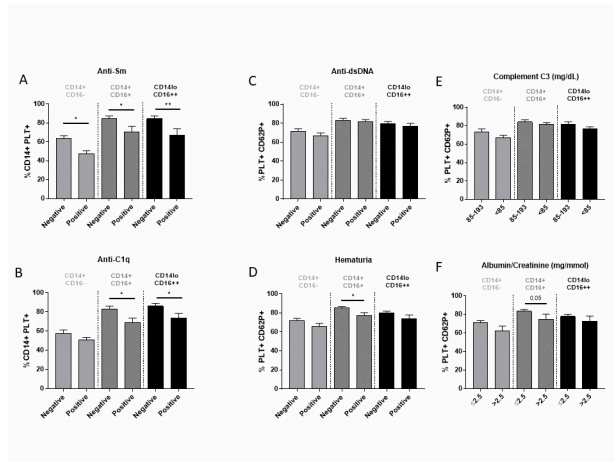


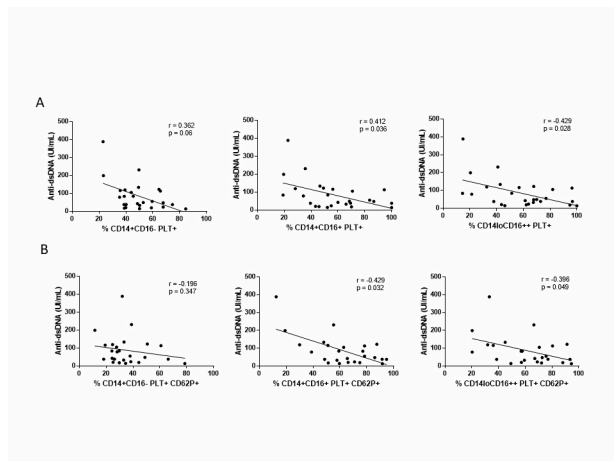
**Figure S1. Phenotype of monocytes without platelets (CD14+PLT-) and with non-activated (CD14+PLT+CD62P-) or activated (CD14+PLT+CD62P+) platelets in HD.** Expression of HLA-DR, CD86, CD54, CD16 and CD64 on CD14+PLT- (light grey), CD14+PLT+CD62P- (dark grey) or CD14+PLT+CD62P+ (black). Dotted line indicates positivity threshold. Representative experiment is shown from 16 independent experiments. Data are expressed as gMFI (geometric mean fluorescence intensity) of gated monocytes.



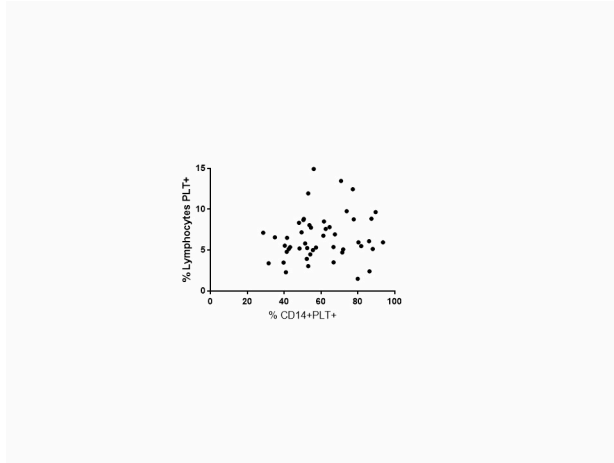
**Figure S2. Functional characterization of monocytes with bound platelets in SLE patients.** (A) Phagocytosis of *E. coli* (n=8), (B) Efferocytosis (n=8) and (C) IL-10 secretion (n=9). Error bars correspond to SEM. Data are shown for 3 (A), 8 (B) and 6 (C) independent experiments. Statistical analysis was performed using the paired t-test for comparison between monocytes from HD or from SLE patients and t-test or the one-way ANOVA with Tukey's multiple comparisons test for comparison between HD and SLE patients. \*p<0.05, \*\*p<0.01, and \*\*\*p<0.001.



**Figure S3. Percentage of monocyte subsets with bound platelets and activated bound platelets in SLE patients according to clinical features.** Comparison of percentages of monocyte subsets with bound platelets (CD14+PLT+) in SLE patients segregated according to (A) positive or negative anti-Sm, (B) positive or negative anti-C1q. Comparison of percentages of monocyte subsets with activated bound platelets (PLT+ CD62P+) in SLE patients segregated according to (C) positive or negative anti-dsDNA, (D) positive or negative haematuria, (E) <85 or 85-193 mg/dl of C3 and (F) >2.5 or ≤2.5 mg/mmol of albumin/creatinine are shown (n=49). Error bars correspond to SEM. Statistical analysis was performed using the t-test. \*p < 0.05, \*\*p < 0.01.



**Figure S4. Correlation of monocyte subsets with bound platelets and activated bound platelets with anti-dsDNA titers in SLE patients.** (A) Correlation of the percentage of monocyte subsets with bound platelets (PLT+) with anti-dsDNA titers in SLE patients (n=26). (B) Correlation of percentage of monocyte subsets with activated bound platelets (PLT+ CD62P+) with anti-dsDNA titers in SLE patients (n=26). Statistical analysis was performed using Pearson's correlation.



**Figure S5. Correlation of monocyte with bound platelets and lymphocytes with bound platelets in SLE patients.** (n=48) Statistical analysis was performed using Pearson's correlation.

**Table S1. Expression of HLA-DR, CD86, CD54, CD16 and CD64 on monocytes without bound platelets (CD14+PLT-), monocytes with non-activated (CD14+PLT+CD62P-) or activated bound platelets (CD14+PLT+CD62P+) in HD and SLE patients.** Data are expressed as the mean  $\pm$  SD values of gMFI of 35 independent experiments (16 HD and 35 SLE patients). Statistical analysis was performed using the one-way ANOVA with Tukey's multiple comparisons test. gMFI, geometric mean fluorescence intensity, SD, standard deviation.

		CD14+PLT- (gMFI, $\bar{x} \pm SD$ ) (a)	CD14+PLT+CD62P- (gMFI, $\bar{x} \pm SD$ ) (b)	CD14+PLT+CD62P+ (gMFI, $\bar{x} \pm SD$ ) (c)	ANOVA	(a) Vs. (b)	(a) Vs. (c)	(b) Vs. (c)
HLA-DR	HD	4.27 $\pm$ 1.34	4.64 $\pm$ 1.66	7.67 $\pm$ 2.8	<0.01	ns	<0.01	<0.01
	SLE	4.18 $\pm$ 1.25	4.37 $\pm$ 1.5	7.63 $\pm$ 2.4	<0.01	ns	<0.01	<0.01
CD86	HD	2.43 $\pm$ 0.58	2.87 $\pm$ 0.56	3.87 $\pm$ 1.36	0.07	<0.01	<0.01	ns
	SLE	2.14 $\pm$ 0.65	2.41 $\pm$ 0.65	2.9 $\pm$ 0.9	<0.01	<0.01	<0.01	<0.01
CD54	HD	1.87 $\pm$ 0.5	2.25 $\pm$ 0.8	2.92 $\pm$ 1.66	0.04	<0.01	<0.01	ns
	SLE	2.06 $\pm$ 0.63	2.41 $\pm$ 0.69	2.83 $\pm$ 0.69	<0.01	<0.01	<0.01	<0.01
CD16	HD	1.7 $\pm$ 0.89	2.33 $\pm$ 1.25	2.8 $\pm$ 1.85	0.01	0.04	0.02	ns
	SLE	1.84 $\pm$ 1.08	2.48 $\pm$ 2.05	2.6 $\pm$ 1.55	0.03	ns	<0.01	ns
CD64	HD	0.88 $\pm$ 0.29	1.12 $\pm$ 0.51	1.18 $\pm$ 0.4	0.01	ns	<0.01	ns
	SLE	1.18 $\pm$ 0.49	1.26 $\pm$ 0.45	1.43 $\pm$ 0.49	<0.01	0.01	<0.01	<0.01