



Supplemental Material

PDLCs and EPCs Co-cultured on Ta Discs: A Golden Fleece for "Compromised" Osseointegration

Hitesh Chopra ^{1,2}, Yuanyuan Han ³, Cheng F. Zhang ¹, Edmond H.N. Pow ^{1,*}

¹ Division of Restorative Dental Sciences, Faculty of Dentistry, The University of Hong Kong, Hong Kong S.A.R., China; h.chopra@usask.ca (H.C.); zhangcf@hku.hk (C.F.Z.)

² College of Dentistry, University of Saskatchewan, Saskatoon, SK S7N 5E4, Canada;

³ Division of Applied Oral Sciences and Community Dental Care, Faculty of Dentistry, The University of Hong Kong, Hong Kong S.A.R., China; u3006886@connect.hku.hk

* Correspondence: ehnpow@hku.hk; Tel.: +852-2859-0309

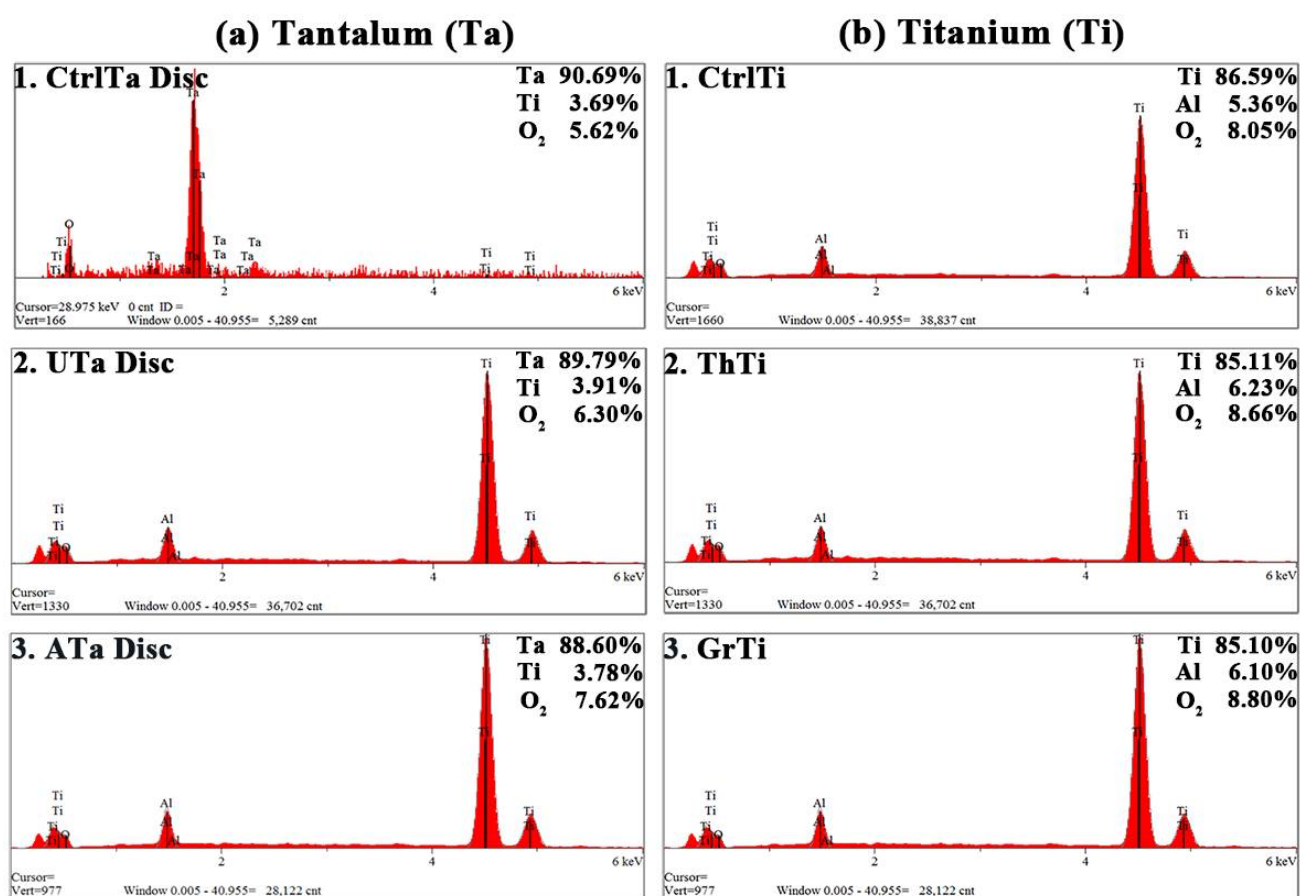


Figure S1. Energy-dispersive X-ray spectroscopy (EDX) of various samples. **(a)** Ta discs 1) CtrlTa Disc 2) UTa Disc 3) ATa Disc **(b)** Apical Ti 1) CtrlTi 2) ThTi 3) GrTi.

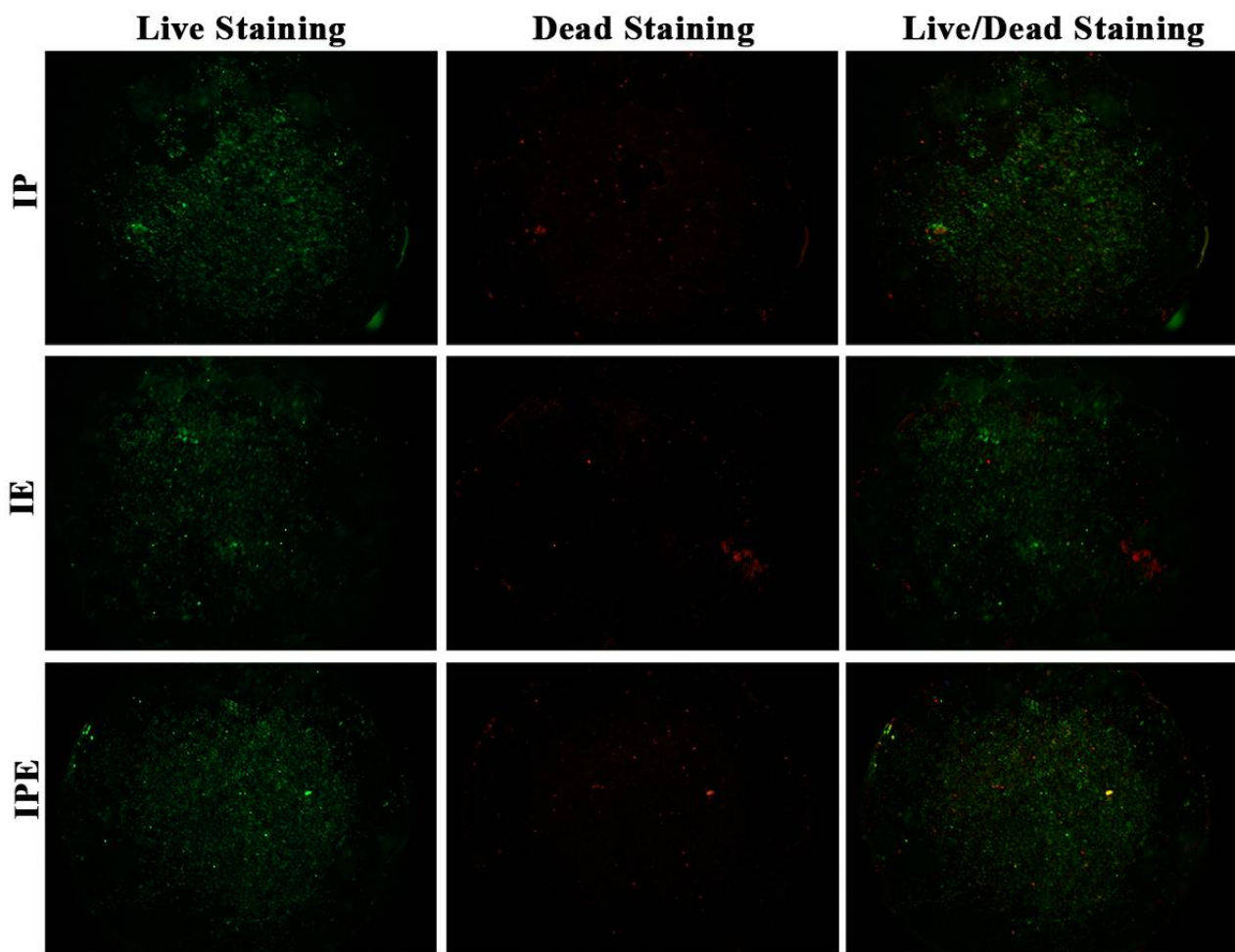


Figure S2. Live/dead staining of Cell-Discs in different IP, IE, and IPE groups on day 8.

Table S1. Optical Interferometer. One-way repeated measures ANOVA for comparing surface roughness (Sa) in different samples.

Groups	Mean \pm Std. Deviation (N=9)	p-value	*Multiple comparisons
1 (PTi)	.98 \pm .022	< 0.05	4>6>3>2>1
2 (ThTi)	1.33 \pm .065		5=4
3 (GrTi)	1.86 \pm .042		5=6
4 (Ta)	2.11 \pm .007		
5 (UTa)	2.06 \pm .021		
6 (Ata)	1.98 \pm .015		

Post-Hoc Tukey HSD test for multiple comparisons with adjustment (statistically significant at $p < 0.05$).

Table S2. Growth Curve of PDLCs and EPCs either cultured alone (IP/IE) or both (IPE) on Ta discs.

x	Groups ^a	Mean \pm Standard deviation (N=3)	Pairwise comparison			
			Between groups	Within group ^b		
			p value	rIP	rIE	rIPE
Day2	1	0.047 \pm 0.022	2>3=1	Day 2 <	Day 2 <	Day 2 <
	2	0.327 \pm 0.044	(<i>p</i> < 0.05)	Day 6 <	Day 6 <	Day 6 <
	3	0.116 \pm 0.063		Day 10	Day 10	Day 10
Day6	1	0.572 \pm 0.078	2>3>1			
	2	1.628 \pm 0.065	(<i>p</i> < 0.05)			
	3	0.891 \pm 0.095				
Day10	1	1.185 \pm 0.075	2>3>1			
	2	2.273 \pm 0.053	(<i>p</i> < 0.05)			
	3	1.841 \pm 0.126				

a. Group 1: rIP; Group 2: rIE; Group 3: rIPE; b. Post-Hoc Tukey HSD test for multiple comparisons with adjustment (statistically significant at *p* < 0.05).

Table S3. Primer sequences for RT-qPCR of osteogenic and angiogenic genes.

Genes	Accession number	Primer	Primer Sequence (5'-3')	Amplicon length (bp)	T m (°C)
GAPDH	NM_001082253.1	F	TGGTGAAGGTCGGAGTGAAC	121	62
		R	ATGTAGTGGAGGTCAATGAATGG		
ALP	XM_017346489.1	F	AGAAACCCCTTCACTGCCATC	128	60
		R	GGTAGTTGTTGTGAGCGTAGTC		
RUNX-2	XM_008262992.2	F	CGCATTCCTCATCCCAGTAT	118	60
		R	GCCTGGGGTCTGTAATCTGA		
BSP	XM_008267617.2	F	CTACCGTTCCGGAGTGATTT	95	62
		R	TCAGTGGCCCTCATTTACAG		
VEGFR-2	NM_001195670.1	F	GAAGAGGAAGTGTGCGACCC	167	60
		R	TCCGACTGGTTGTCATCTGG		
CD31	XM_008271716.2	F	CAAGGAGAACGGGGACAGAC	225	60
		R	ATCACCCCGATGACAACCAC		