

Health Risk Assessment of Exposure to Air Pollutants Exceeding the New WHO Air Quality Guidelines (AQGs) in São Paulo, Brazil

Caroline Fernanda Hei Wikuats ^{1,*}, Thiago Nogueira ², Rafaela Squizzato ¹, Edmilson Dias de Freitas ¹ and Maria de Fatima Andrade ¹

¹ Departamento de Ciências Atmosféricas, Instituto de Astronomia, Geofísica de Ciências Atmosféricas, Universidade de São Paulo, São Paulo 05508-090, Brazil

² Departamento de Saúde Ambiental, Faculdade de Saúde Pública, Universidade de São Paulo, São Paulo 01246-904, Brazil

* Correspondence: caroline.wikuats@usp.br

Figure S1 – Hourly, monthly, and day-of-the-week variations for PM_{2.5} (a), PM₁₀ (b), SO₂ (c), CO (d), NO₂ (e), and O₃ (f) during the sampling period. The shaded areas represent the 95% confidence intervals of the mean.

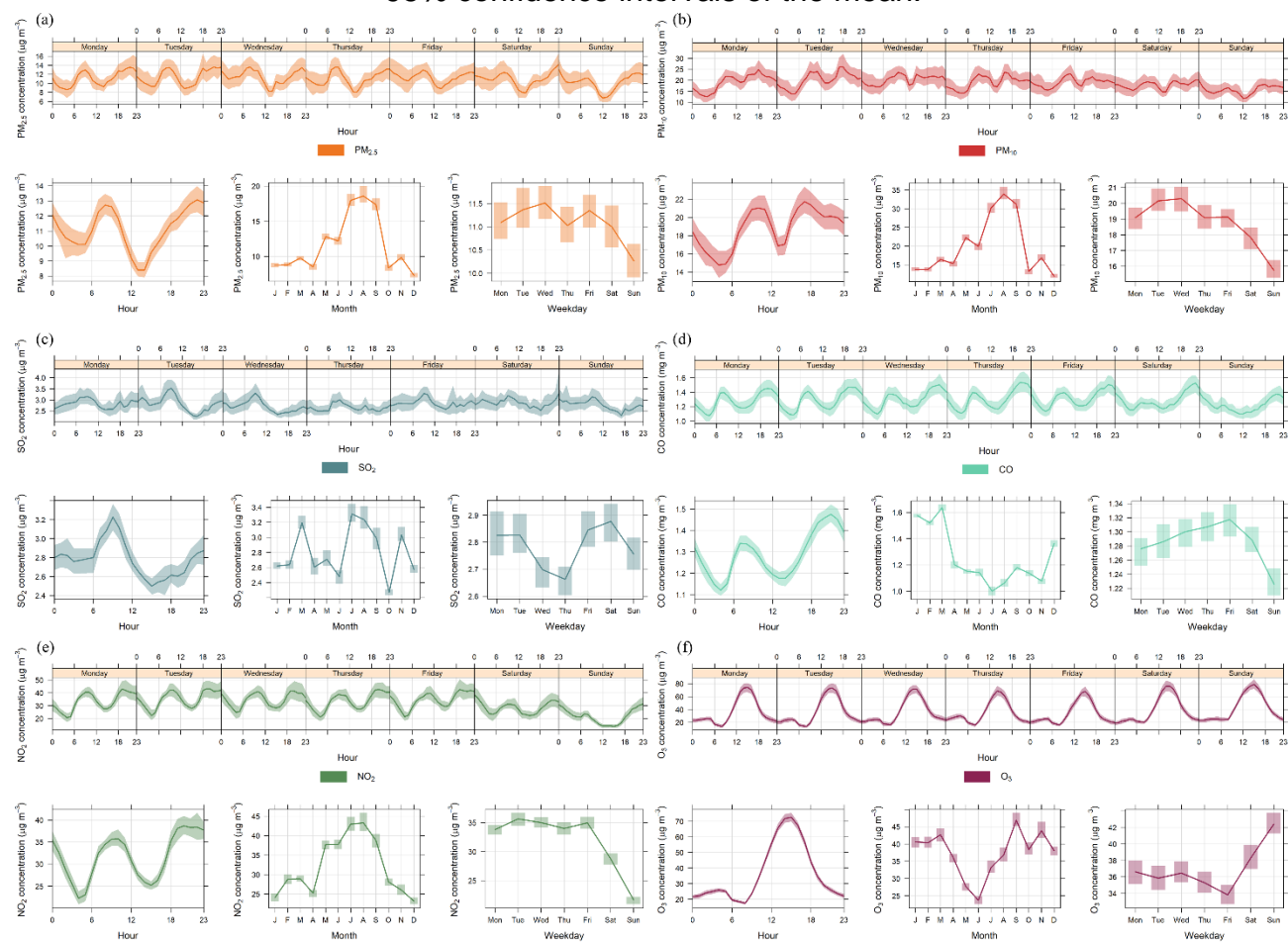


Figure S2 – 24-h time series for temperature (a), precipitation (b), relative humidity (c), and wind speed (d) during the sampling period.

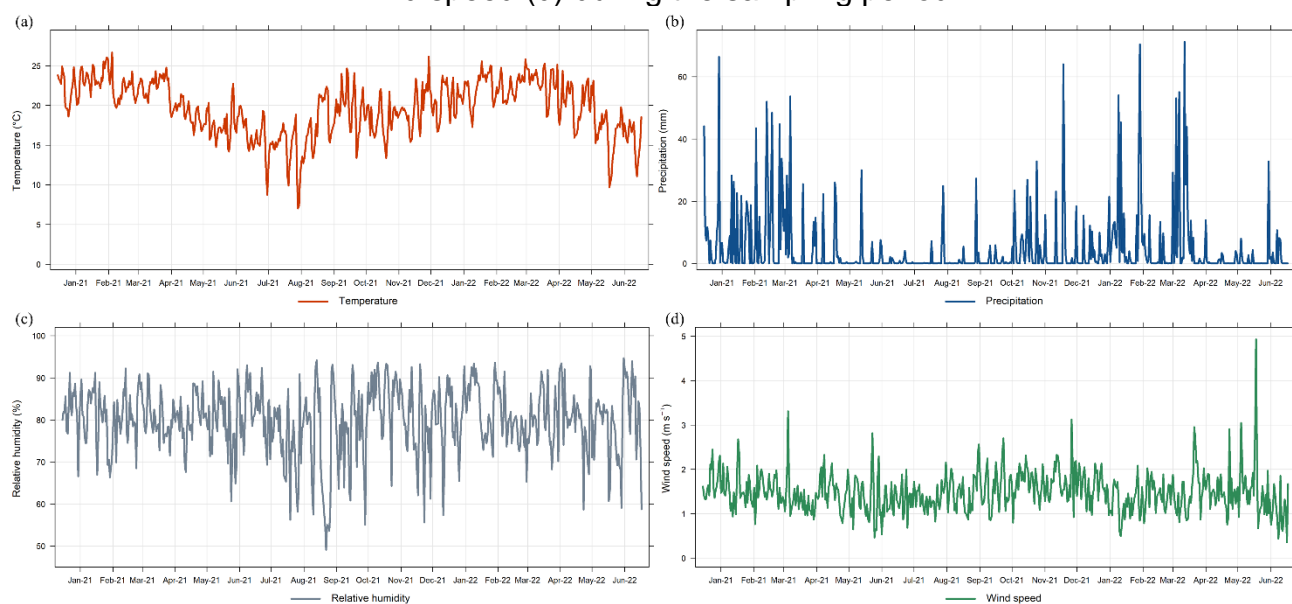


Figure S3 – Overall wind rose (a) and monthly wind roses (b) during the sampling period.

