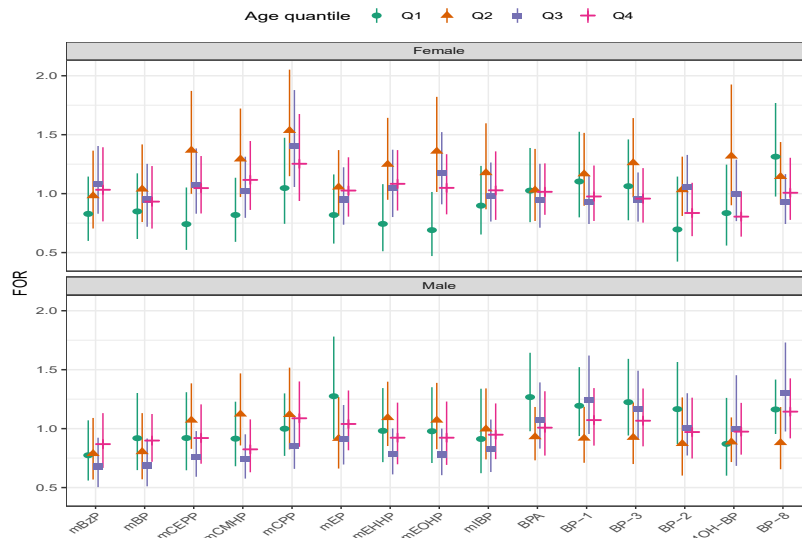
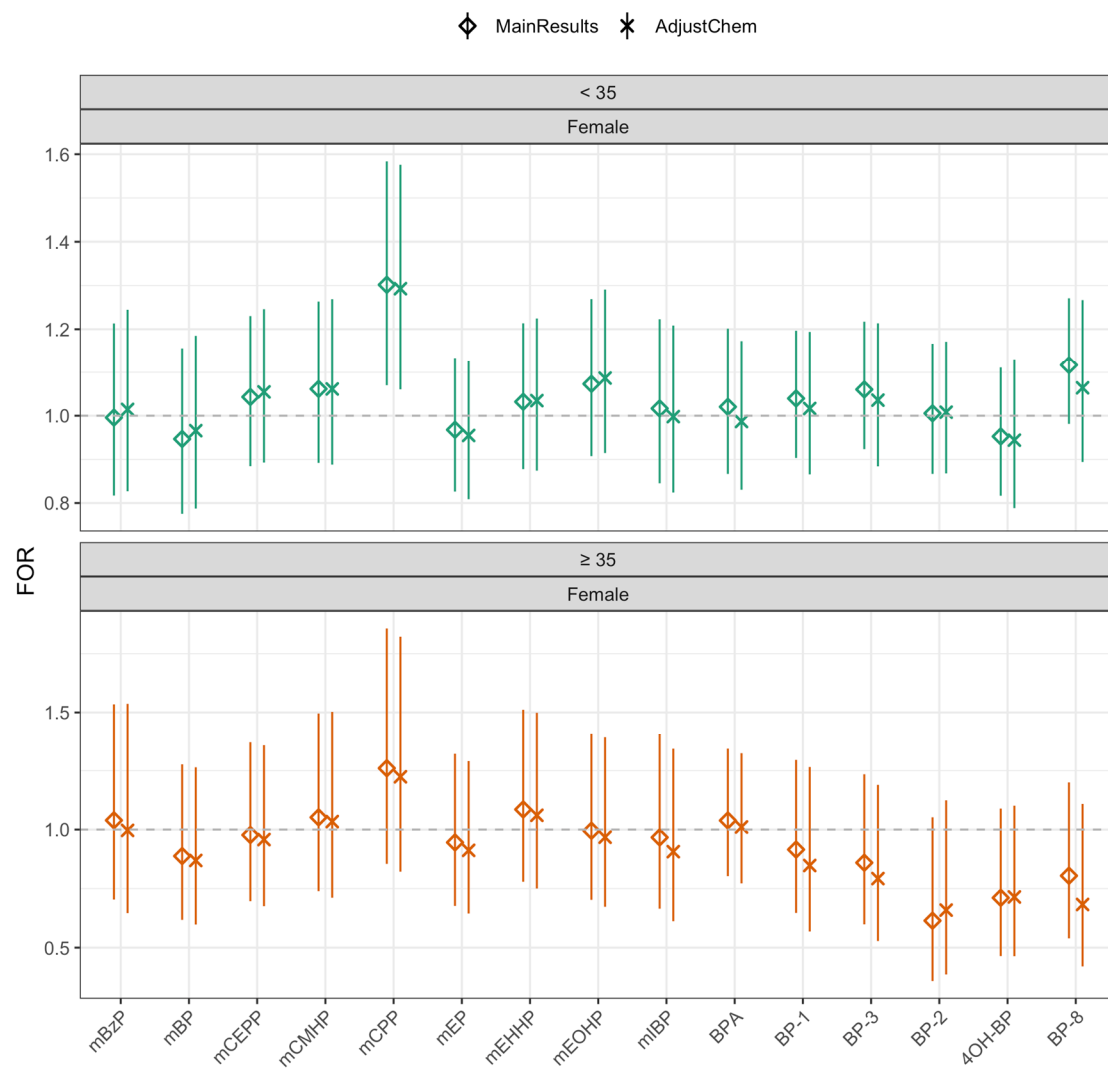
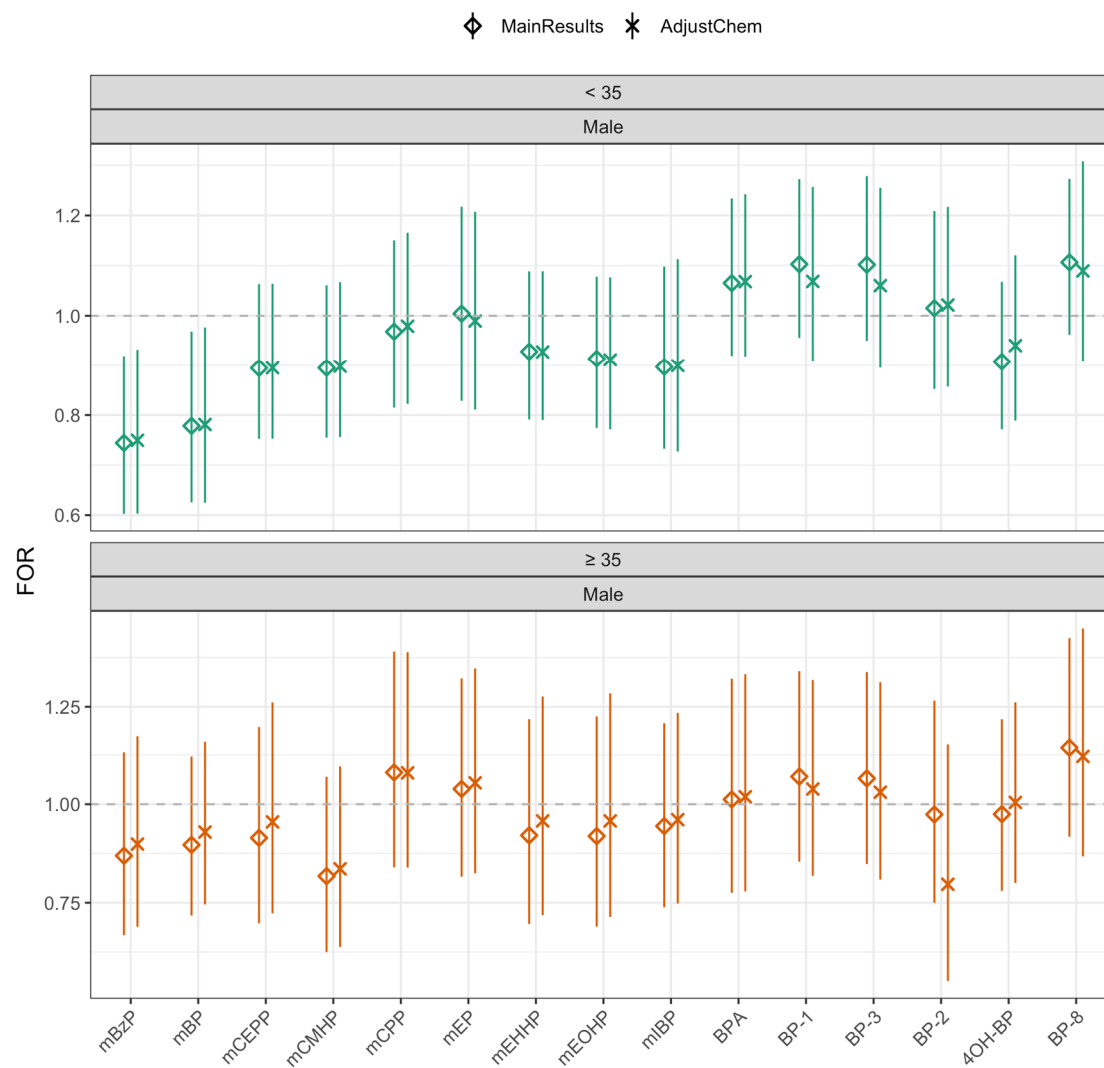


# Does Older Age Modify Associations between Endocrine Disrupting Chemicals and Fecundability?



**Figure S1.** Fecundability odds ratios for phthalate and benzophenone filter metabolites with quantiles of age, separately by sex [females: Q1 (19-26.9 years), Q2 (27-28.9), Q3 (29-32.9), Q4 (33-40), males: Q1 (19-27.9), Q2 (28-30.9), Q3 (31-34.9), Q4 (35-51)]. Models are adjusted for age quantiles, creatinine, cotinine, and BMI.





**Figure S2.** Fecundability odds ratios for both female and male partners at age <35 and age ≥35, controlling for other partner's chemical (AdjustChem) compared to the main results (MainResults). Models are also adjusted for categorical age, creatinine, cotinine, and BMI.