



Supplementary Material— Effect of heating on physicochemical property of aerosols during vaping

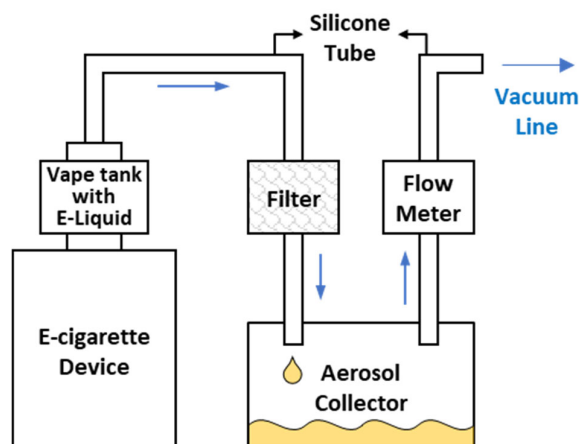


Figure S1. A schematic of the experiment setup with an e-cigarette aerosol collecting system.

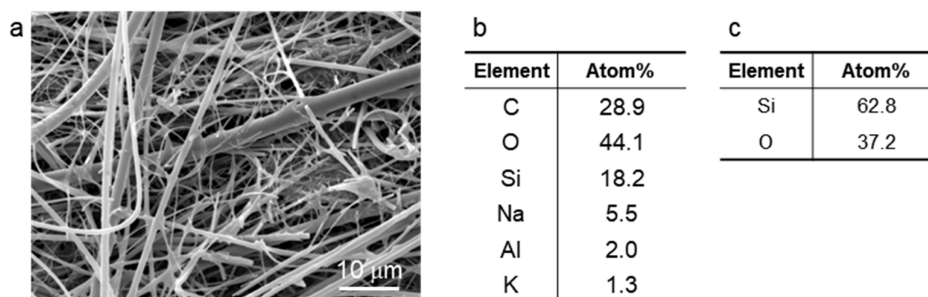


Figure S2. Structural and chemical analysis on a glass fiber filter and rubber tube. (a) An SEM image of a glass fiber filter surface. Atomic concentration analysis on (b) a glass fiber filter and (c) a silicone rubber tubing surface using EDS.