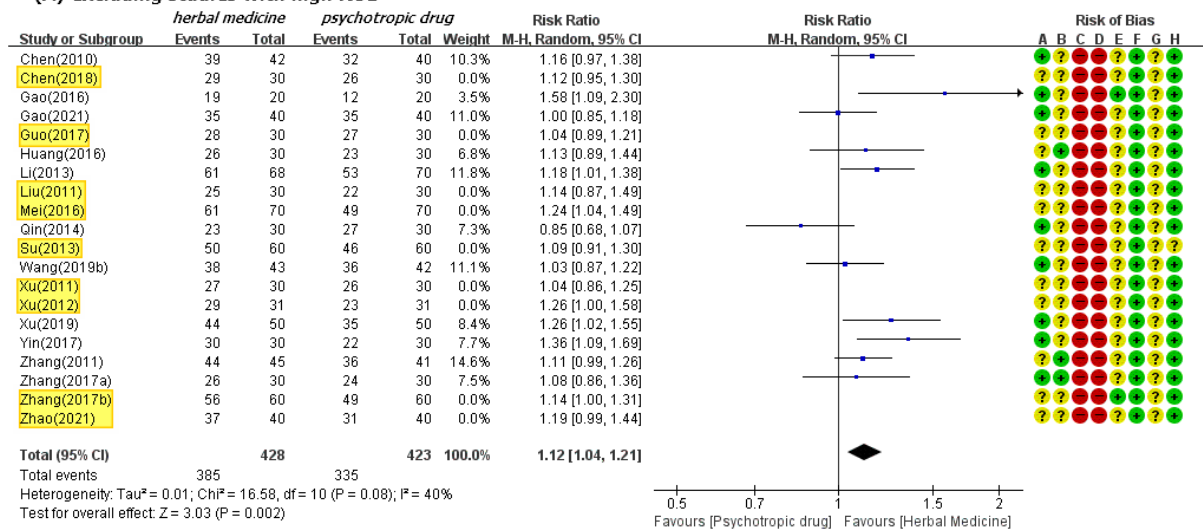


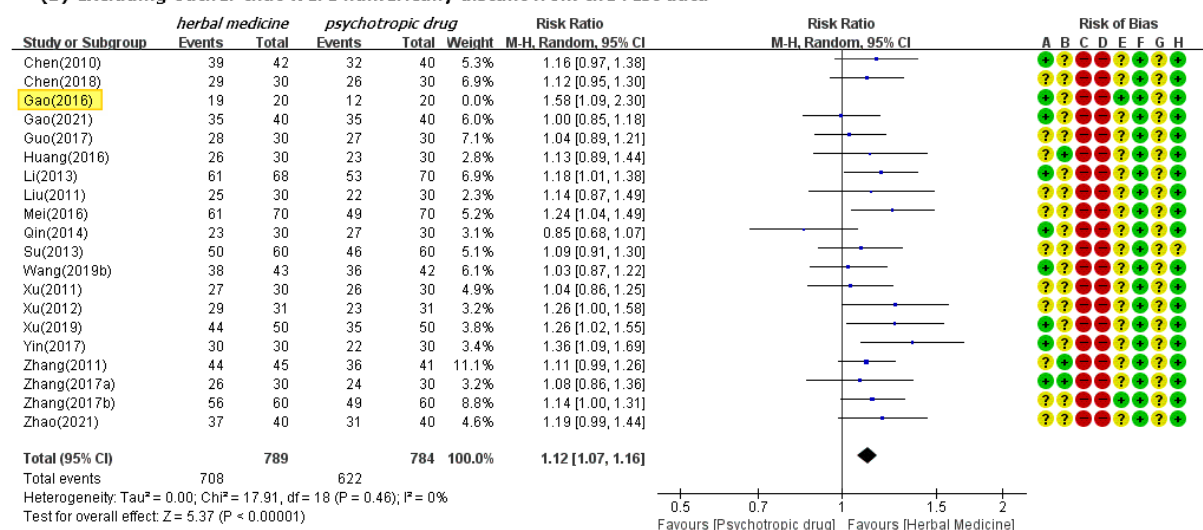
(A) excluding studies with high ROB



Risk of bias legend

- (A) Random sequence generation (selection bias)
- (B) Allocation concealment (selection bias)
- (C) Blinding of participants
- (D) Blinding of personnel
- (E) Blinding of outcome assessment (detection bias)
- (F) Incomplete outcome data (attrition bias)
- (G) Selective reporting (reporting bias)
- (H) Other bias

(B) excluding outlier that were numerically distant from the rest data



Risk of bias legend

- (A) Random sequence generation (selection bias)
- (B) Allocation concealment (selection bias)
- (C) Blinding of participants
- (D) Blinding of personnel
- (E) Blinding of outcome assessment (detection bias)
- (F) Incomplete outcome data (attrition bias)
- (G) Selective reporting (reporting bias)
- (H) Other bias

Figure S2. Forest plots for comparison of TER between herbal medicine and psychotropic drug groups. Sensitivity analysis after (A) excluding studies with high ROB and (B) excluding outlier that were numerically distant from the rest data