

Supplementary Materials

Figure S1. Kandy District, Sri Lanka (Land area 1910 km²; Population 1.5 million approx.).

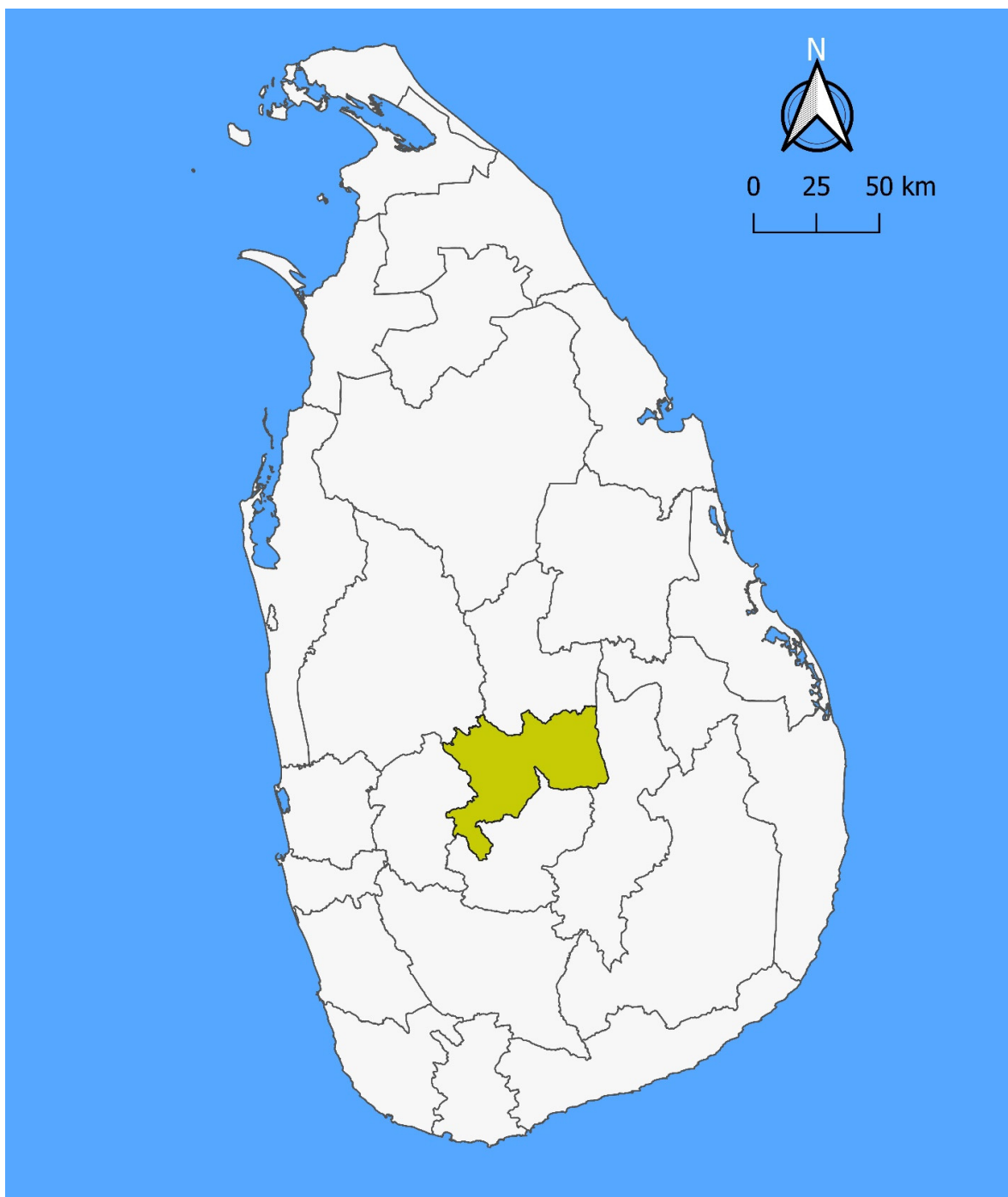


Figure S2: Divisional secretariats of the Kandy District. Catchment area of the Teaching Hospital, Kandy includes regions 0, 4-7, 9, 11-15 Catchment area of the Teaching Hospital, Peradeniya includes regions 1-4, 6, 10, 12-14, 16-18.

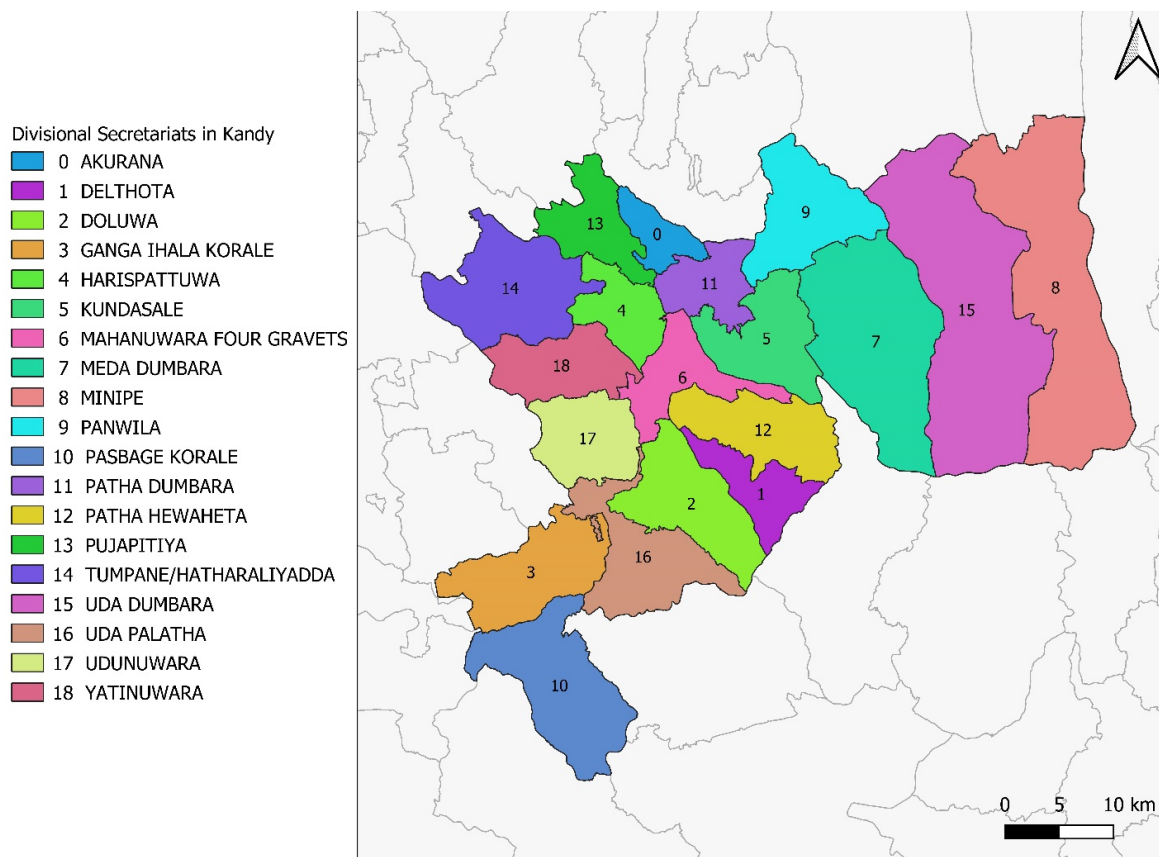


Figure S3. The locations of the air pollution monitoring sites in Kandy in 2020.

(KOALA 82 – National Institute of Fundamental Studies, KOALA 84 - Asgiriya, KOALA 87 - Faculty of Allied Health Sciences University of Peradeniya, KOALA 88 - Keerthi Sri Rajasinghe Mawatha)

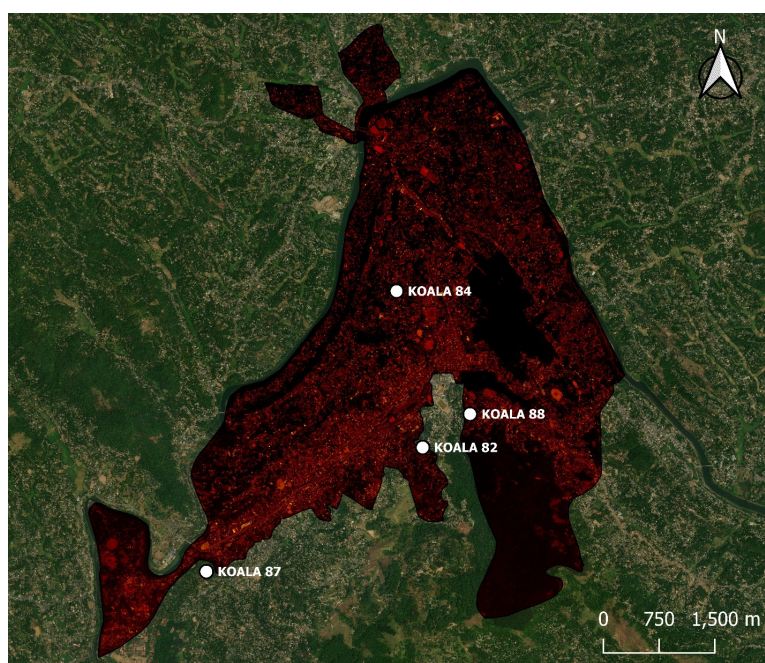


Table S1: The number of hospitalizations due to respiratory diseases from 01-01-2019 to 12-31-2019

	Number of hospitalization (%) N=9709
Male	5221 (53.77)
Female	4488 (46.23)
≤64 years	6129 (63.13)
65+ years	3580 (36.87)
Pneumonia	271 (2.79)
COPD	2238 (23.05)
Asthma	1988 (20.48)

Table S2: The number of hospitalizations due to respiratory diseases in low and high air pollution periods in selected months

	Low ambient air pollution period	High ambient air pollution period
	Number of hospitalizations (%)	Number of hospitalizations (%)
All	2427 (45.17)	2946 (54.83)
Male	1262 (23.49)	1628 (30.30)
Female	1165 (21.68)	1318 (24.53)
0–64 years	1586 (29.52)	1846 (34.36)
65+ years	841 (15.65)	1100 (20.47)
Pneumonia	58 (1.08)	90 (1.68)
COPD	525 (9.77)	707 (13.16)
Asthma	534 (9.94)	559 (10.40)

Table S3: Descriptive statistics for daily air pollutants in Kandy, 2020 measured at different locations in Kandy.

KOALA ID	Time Period	PM _{2.5}	PM ₁₀
KOALA82 (NIFS)	Feb-01 to Mar-02	37.21 (9.73)	44.03 (11.59)
KOALA84	Feb-08 to Mar-29	40.27 (7.51)	45.39 (8.57)
KOALA87	Feb -11 to Mar -01	36.93 (9.97)	40.74 (11.31)
KOALA88	Feb -01 to Mar-01	37.59 (7.77)	42.99 (9.14)