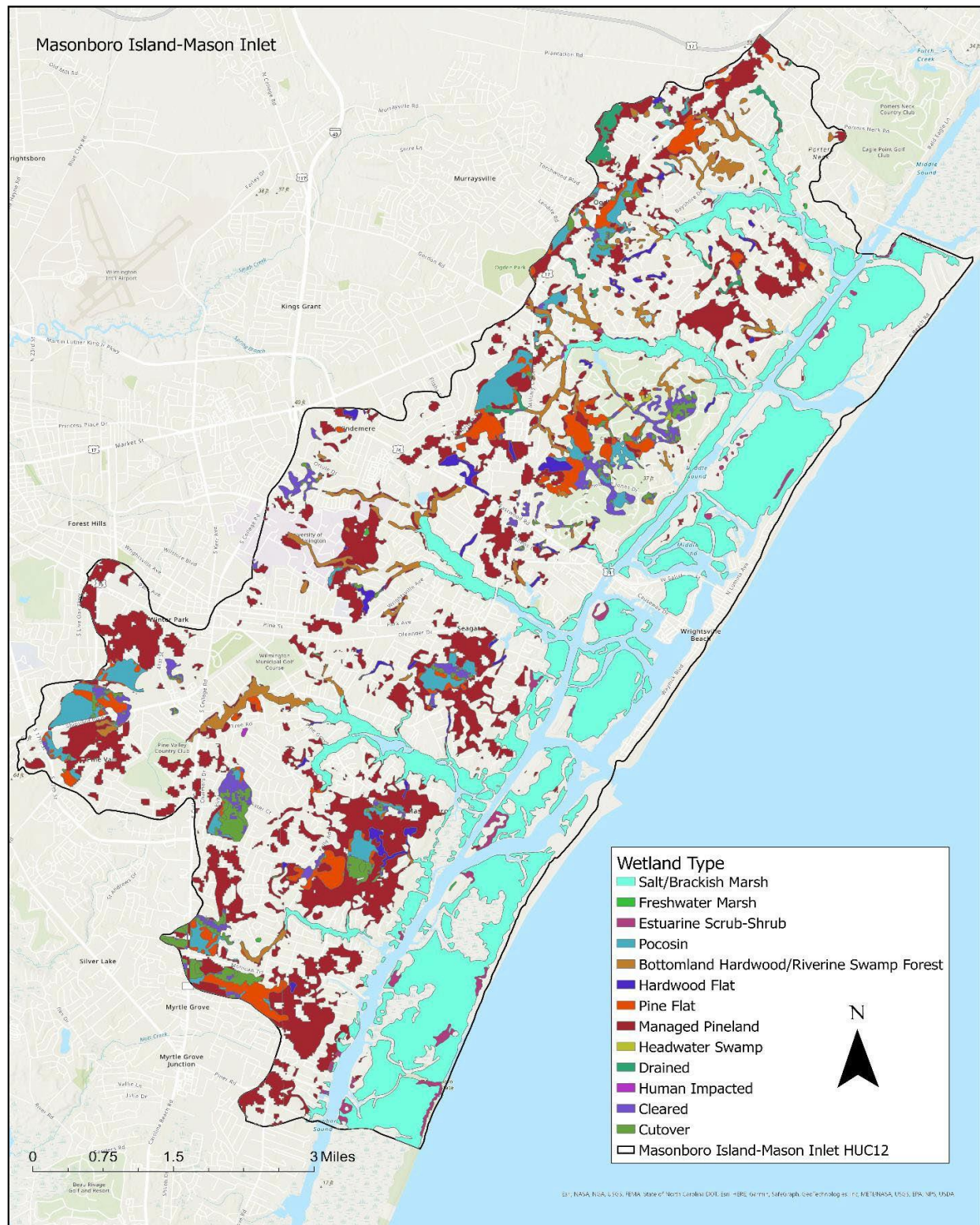


## Supplementary Materials





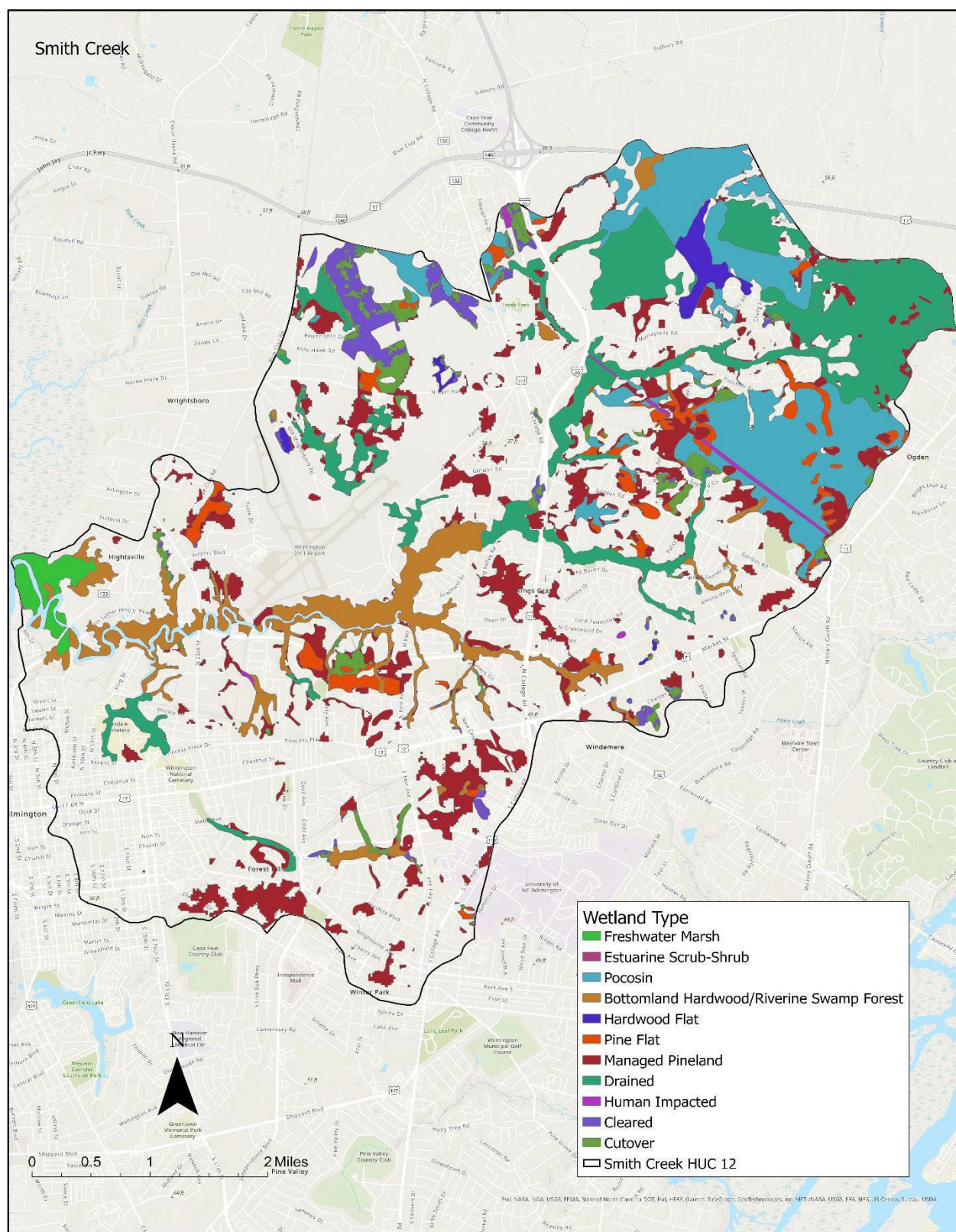
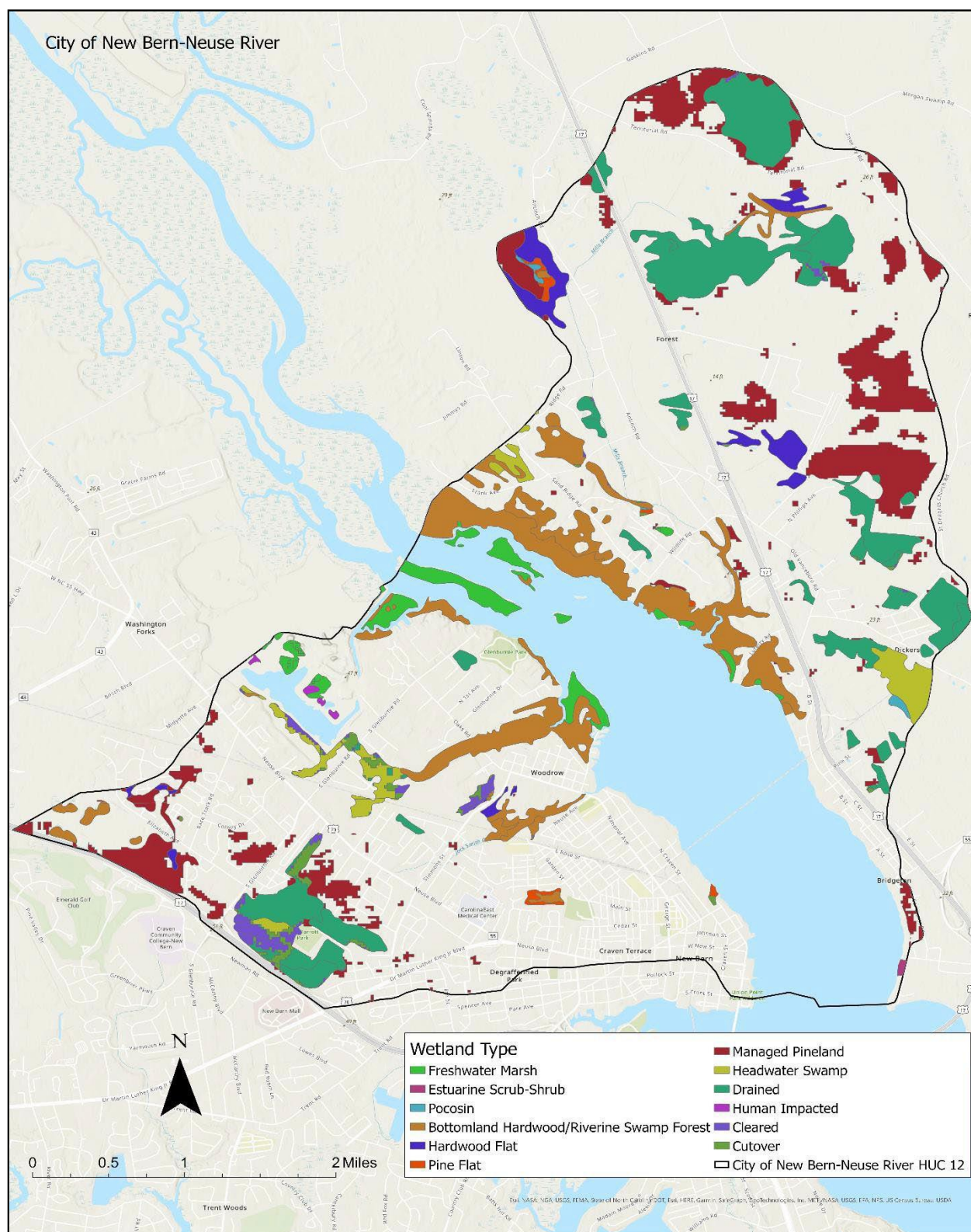


Figure S2. Wetland types of the Smith Creek subwatershed (21,136.41 acres) per NCDEQ wetland data (datasource: NCDEQ).







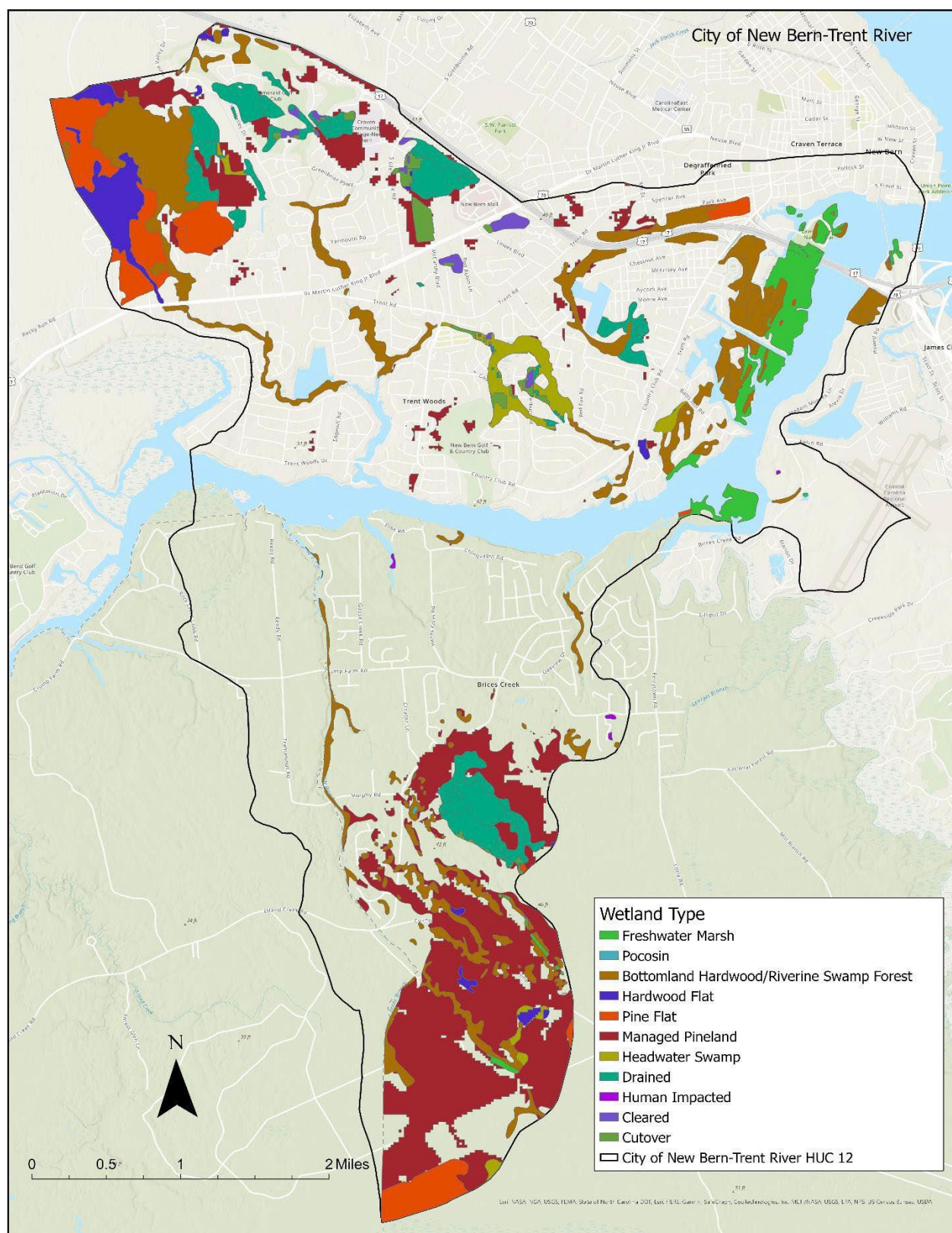


Table S1 *Dates of Landsat 8 data utilized for the sensitivity time series analysis*

Landsat 8 date of collection	Spatial resolution	Path	Row	Tier
4/24/2014	30 meters	15	36	T1
8/14/2014	30 meters	15	36	T1
4/27/2015	30 meters	15	36	T1
6/14/2015	30 meters	15	36	T1
5/15/2016	30 meters	15	36	T1
5/2/2017	30 meters	15	36	T1
7/21/2017	30 meters	15	36	T1
8/9/2018	30 meters	15	36	T1
4/22/2019	30 meters	15	36	T1
7/27/2019	30 meters	15	36	T1
4/8/2020	30 meters	15	36	T1
4/27/2021	30 meters	15	36	T1

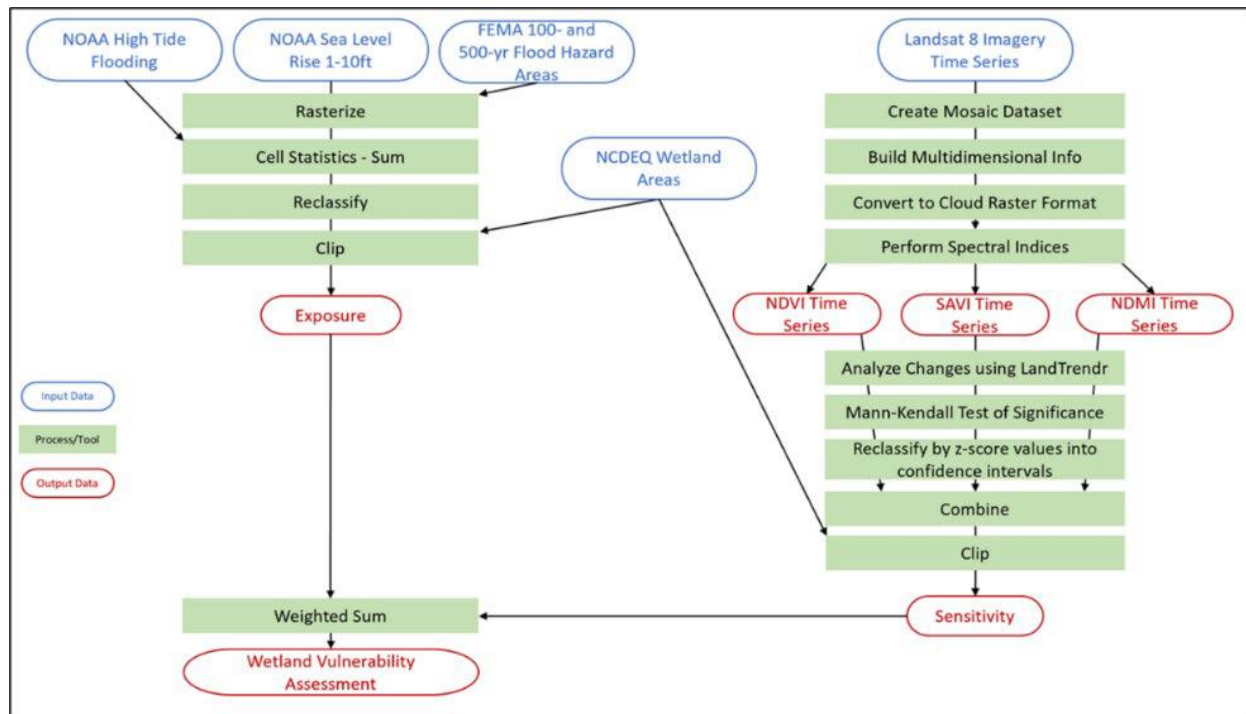


Figure S5. Detailed wetland vulnerability assessment workflow showing intermediary computational steps for ArcGIS Pro implementation.



