

## **SUPPLEMENTAL MATERIAL**

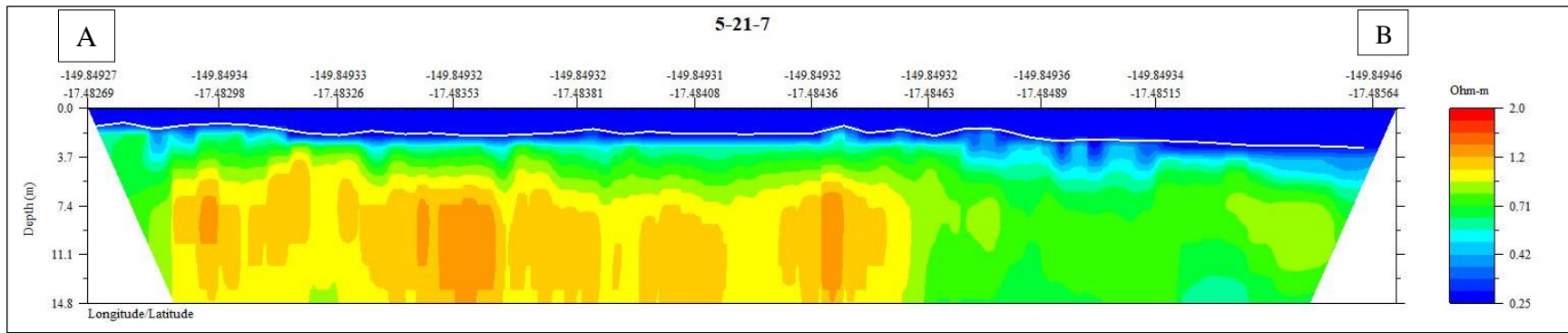
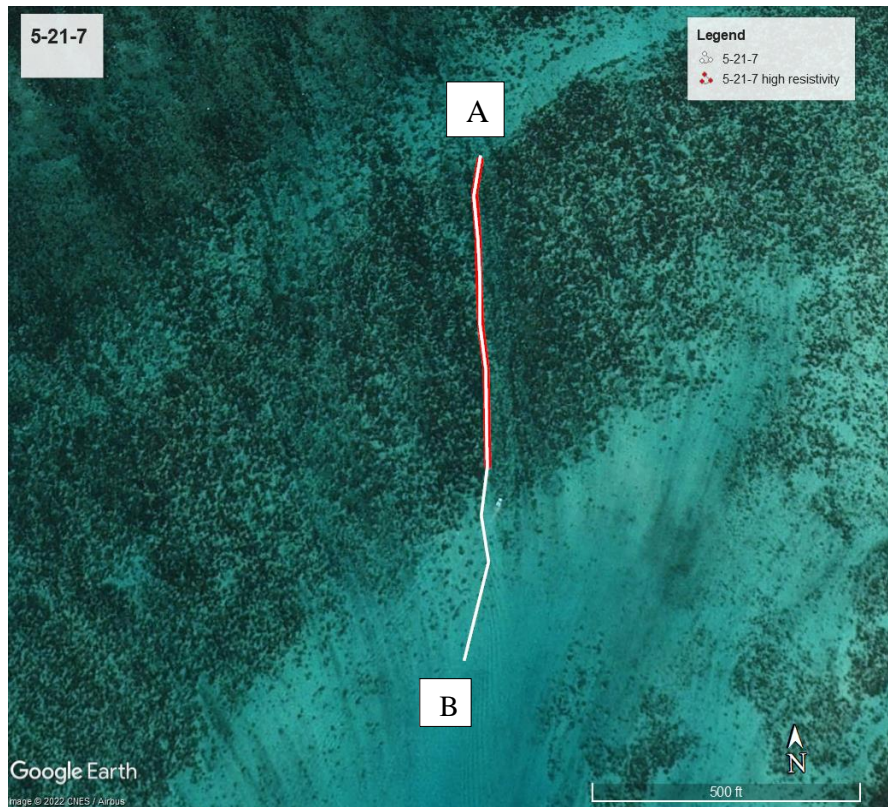
**Survey Name** 5-21-7

**Survey Length (meters)** 320

**Electrode Spacing (meters)** 12

**RMS%** 7.55 – 8.05

**Maximum measured resistivity (ohm-m)** 1.4



**FIGURE S1. CRP transect 5-21-7.**

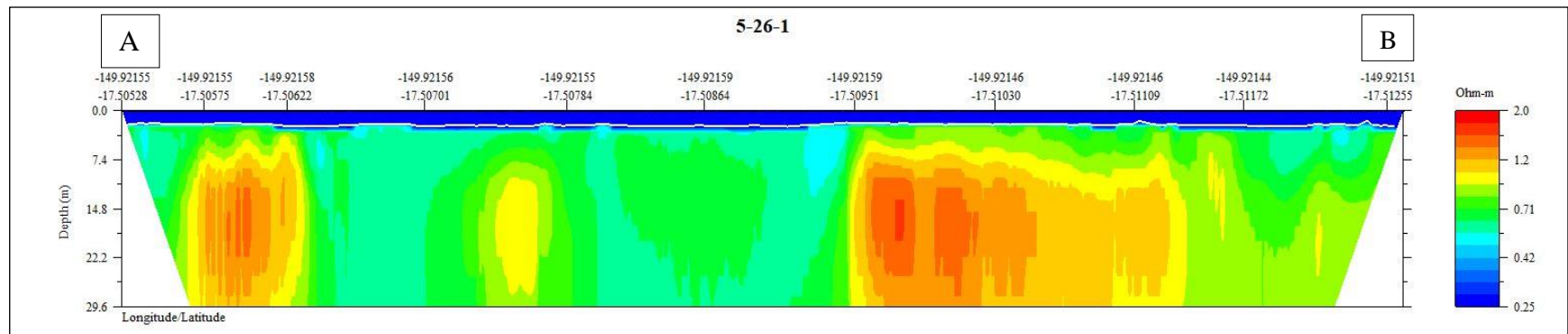
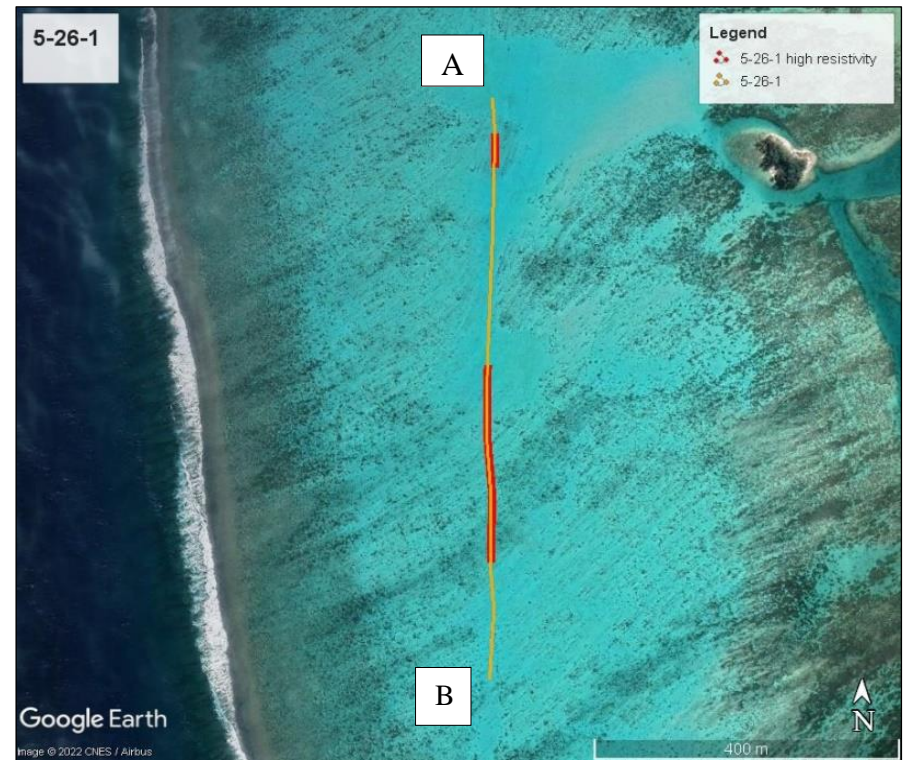
**Survey Name** 5-26-1

**Survey Length (meters)** 825

**Electrode Spacing (meters)** 12

**RMS%** 2.94 – 7.25

**Maximum measured resistivity (ohm-m)** 1.7



**FIGURE S2. CRP transect 5-26-1**



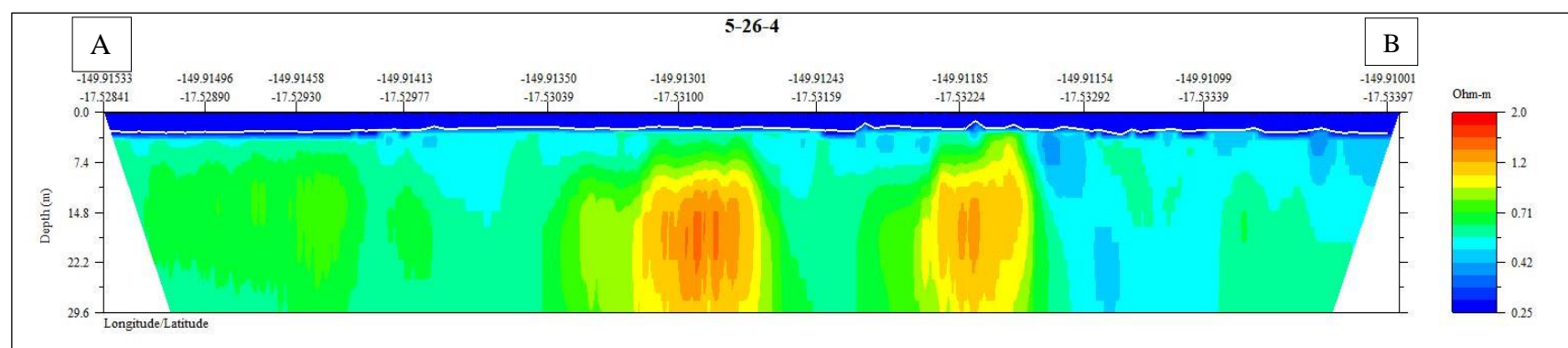
**Survey Name** 5-26-4

**Survey Length (meters)** 886

**Electrode Spacing (meters)** 12

**RMS%** 6.39 – 9.32

**Maximum measured resistivity (ohm-m)** 1.5



**FIGURE S3. CRP Transect 5-26-4.**

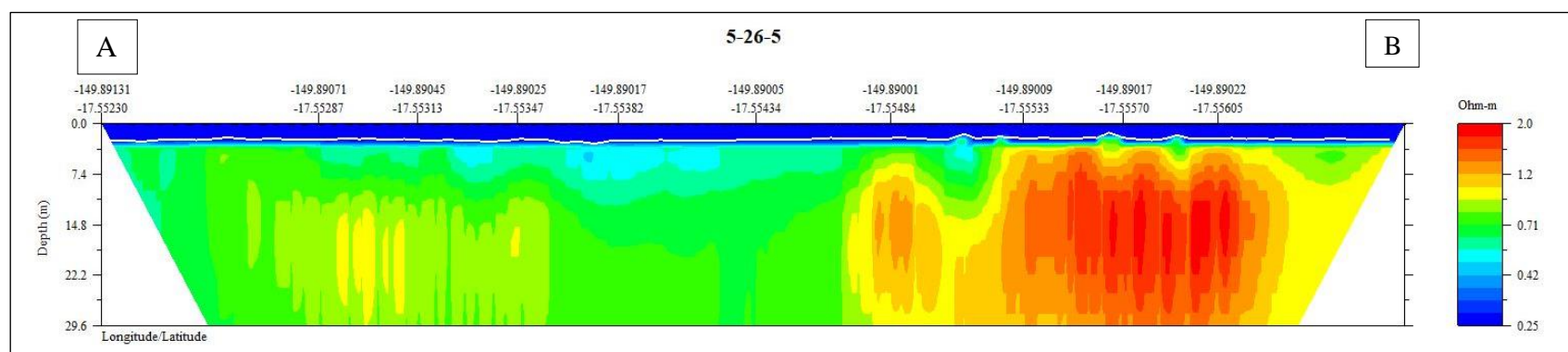
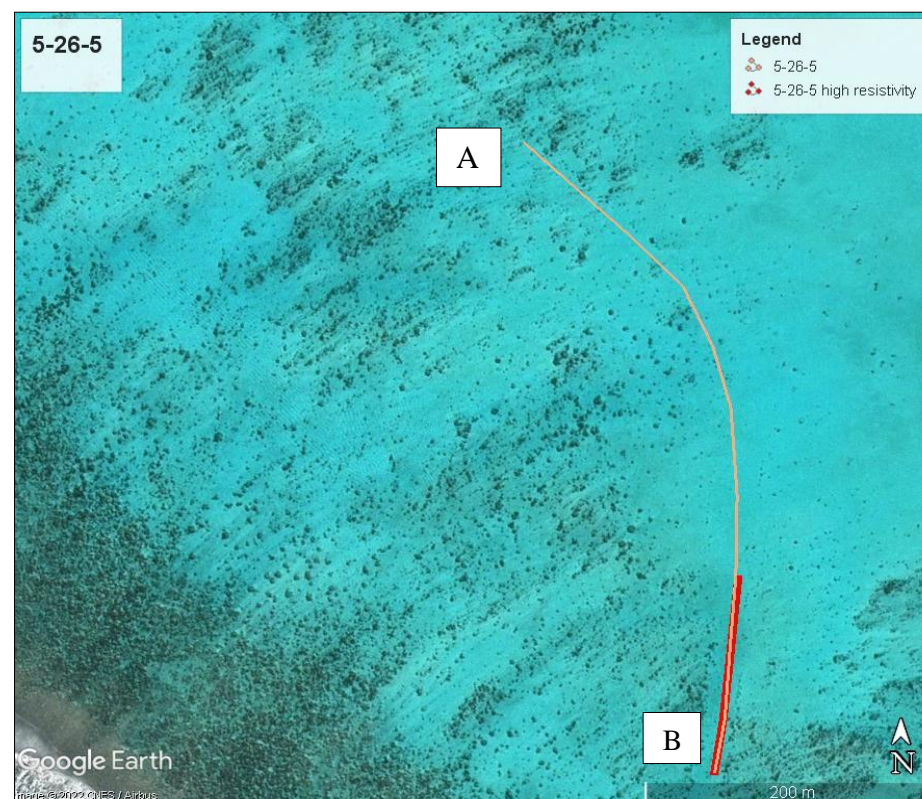
**Survey Name** 5-26-5

**Survey Length (meters)** 1486

**Electrode Spacing (meters)** 12

**RMS%** 4.75 – 10.06

**Maximum measured resistivity (ohm-m)** 2.0



**FIGURE S4. CRP transect 5-26-5.**



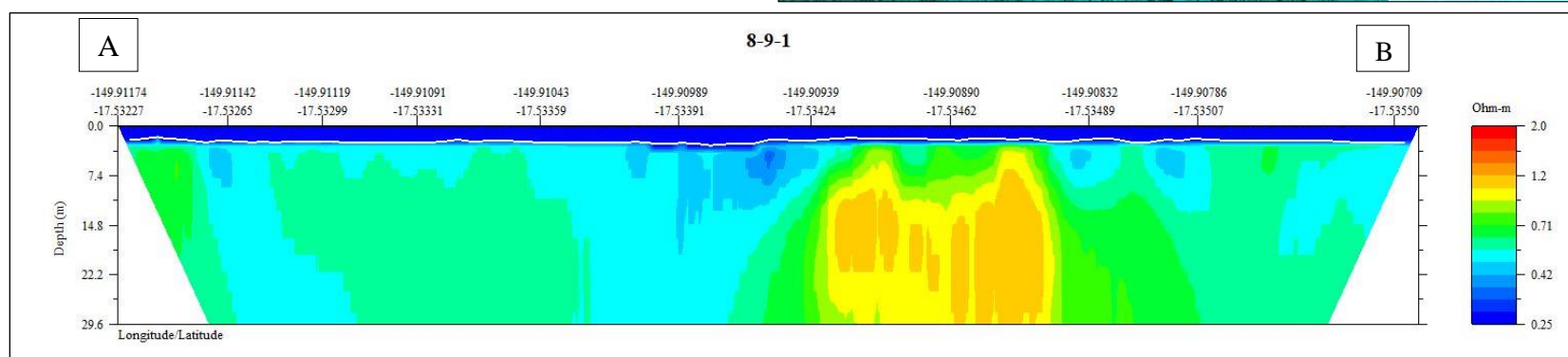
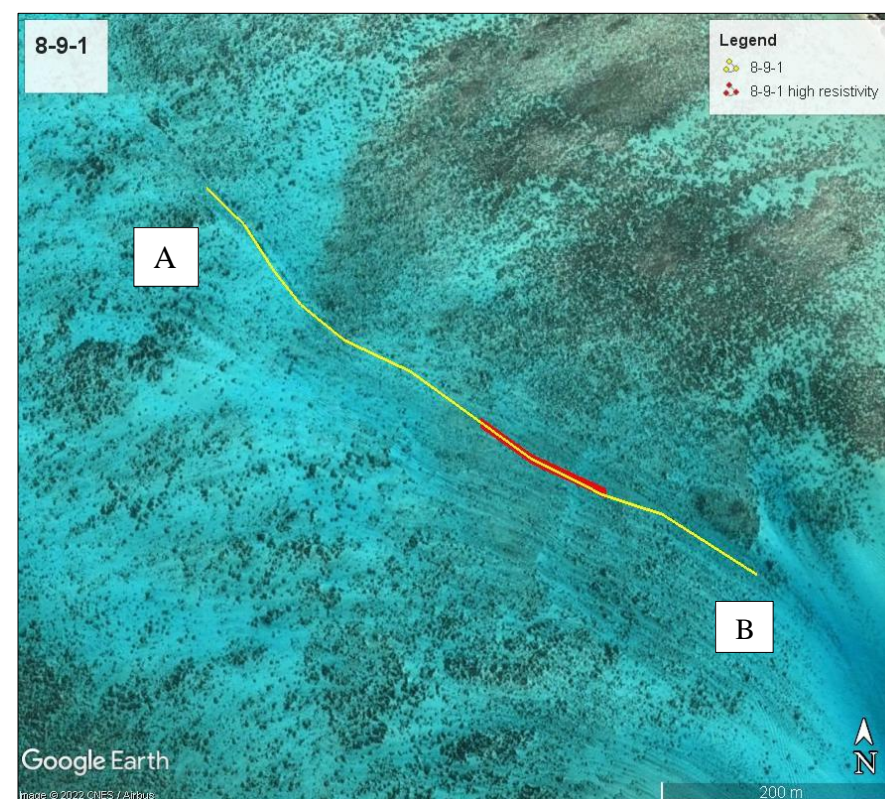
**Survey Name** 8-9-1

**Survey Length (meters)** 612

**Electrode Spacing (meters)** 12

**RMS%** 5.55 – 7.6

**Maximum measured resistivity (ohm-m)** 1.2



**FIGURE S5. CRP transect 8-9-1.**

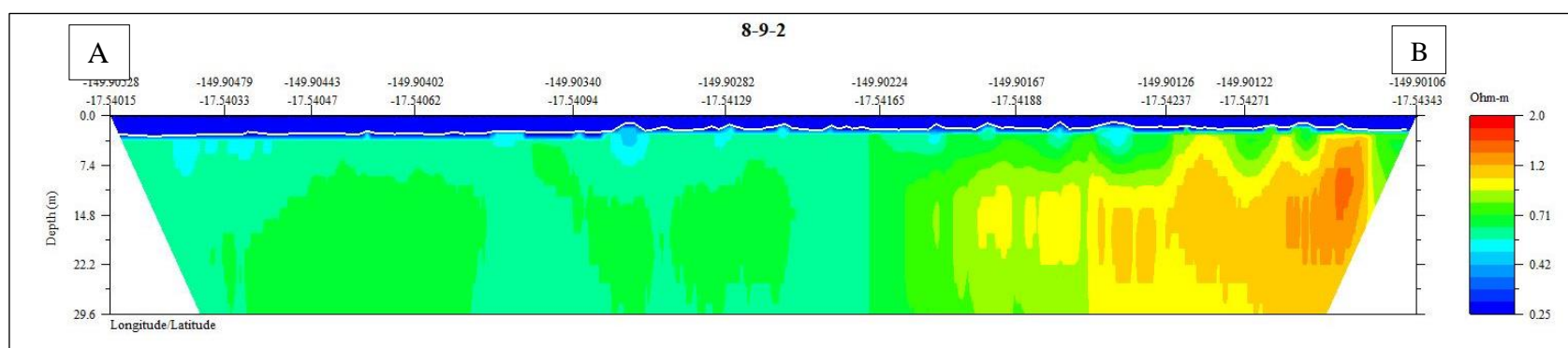
**Survey Name** 8-9-2

**Survey Length (meters)** 585

**Electrode Spacing (meters)** 12

**RMS%** 2.89 – 6.18

**Maximum measured resistivity (ohm-m)** 1.5



**FIGURE S6. CRP transect 8-9-2**



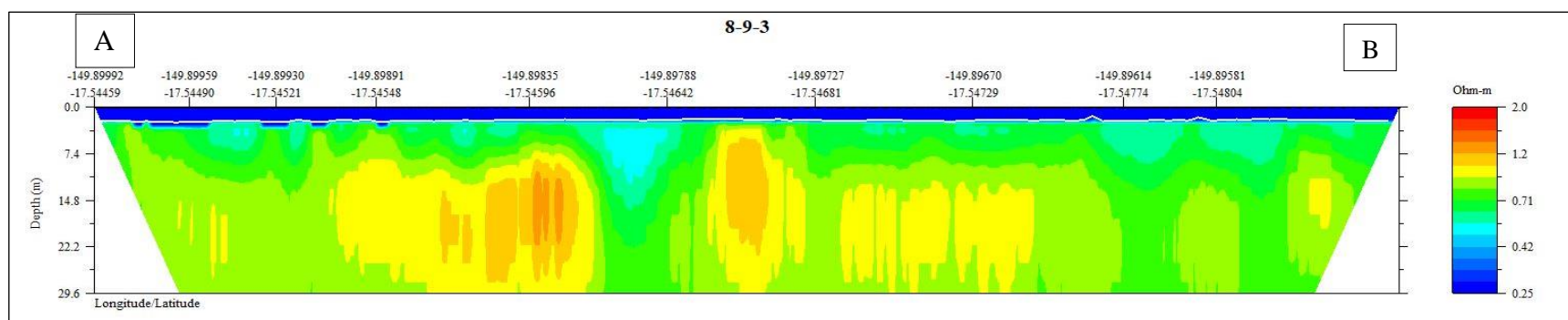
**Survey Name** 8-9-3

**Survey Length (meters)** 865

**Electrode Spacing (meters)** 12

**RMS%** 3.81 – 6.35

**Maximum measured resistivity (ohm-m)** 1.3



**FIGURE S7. CRP transect 8-9-3.**



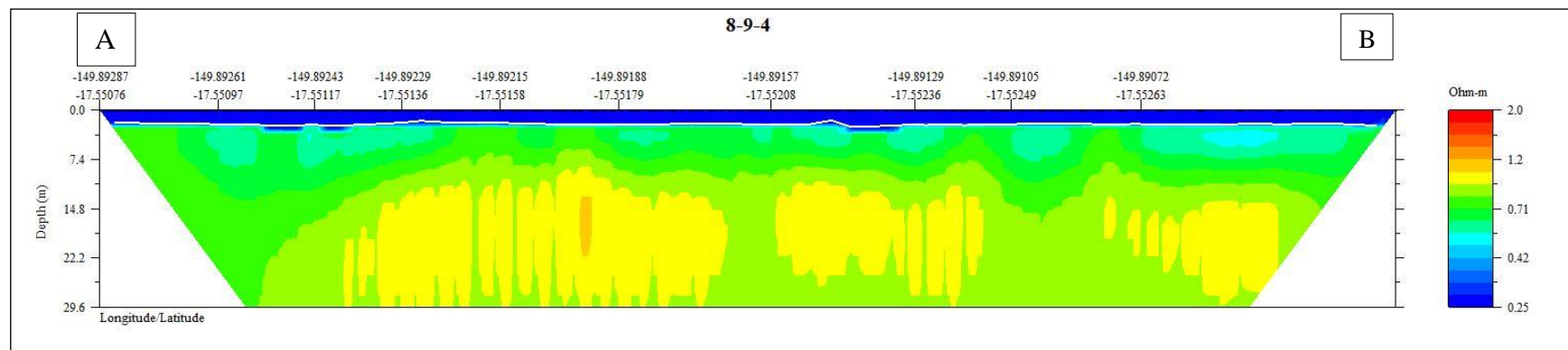
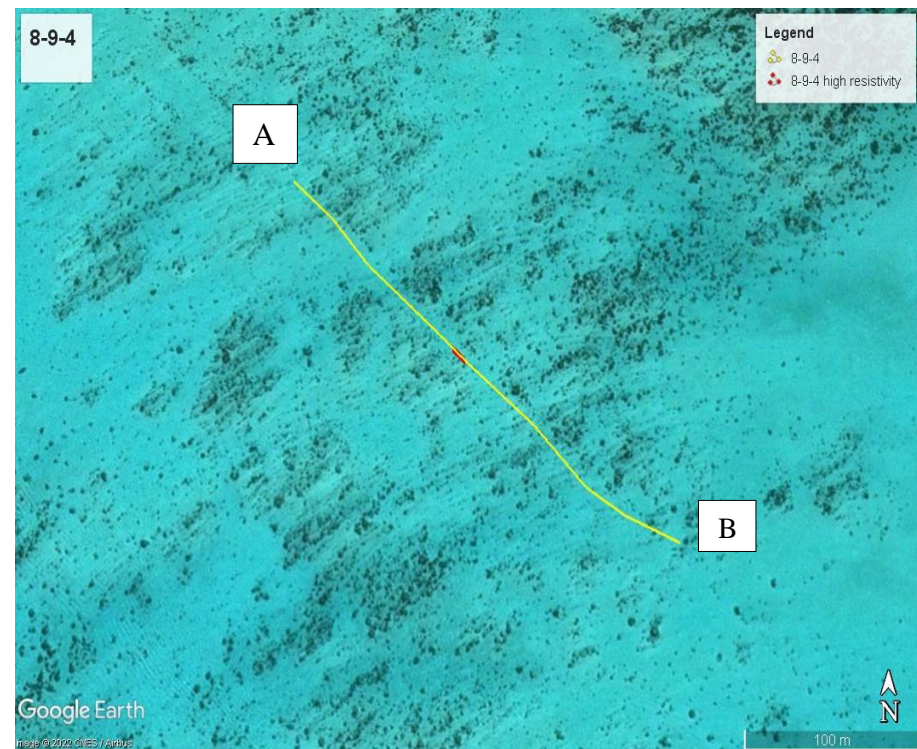
**Survey Name** 8-9-4

**Survey Length (meters)** 417

**Electrode Spacing (meters)** 12

**RMS%** 4.72 – 12.03

**Maximum measured resistivity (ohm-m)** 1.2



**FIGURE S8. CRP transect 8-9-4**

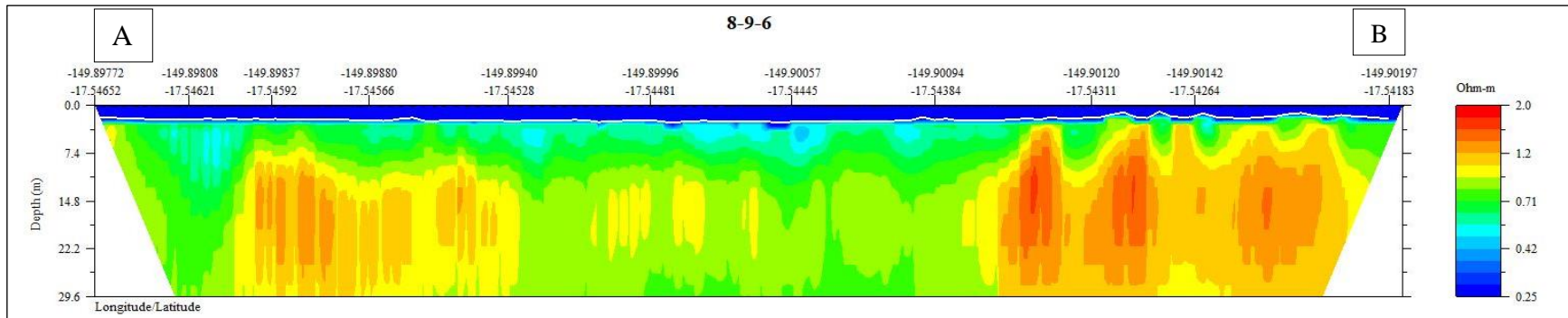
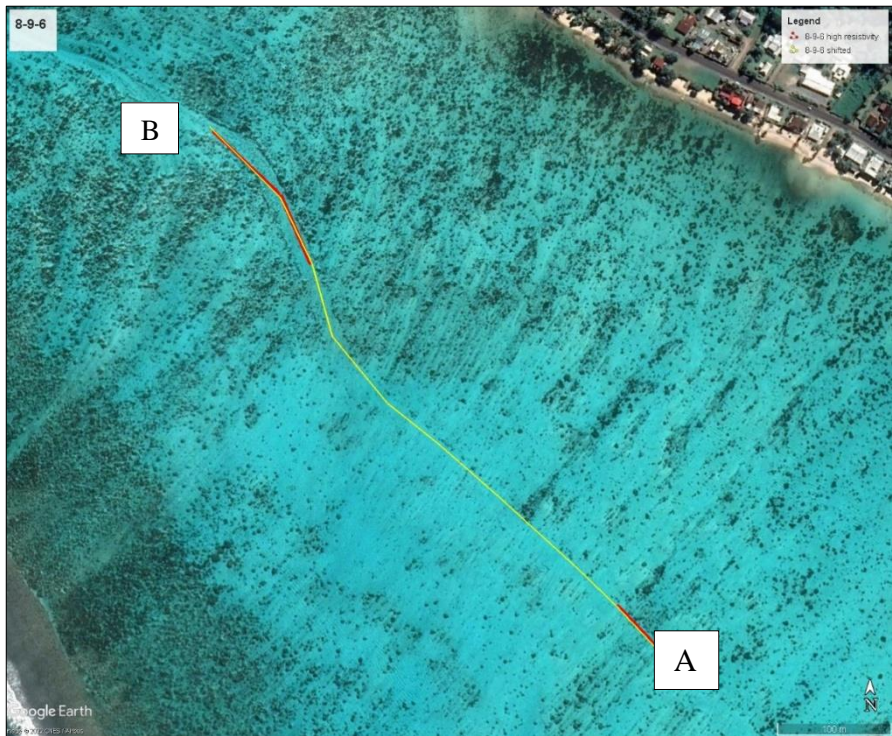
**Survey Name** 8-9-6

**Survey Length (meters)** 804

**Electrode Spacing (meters)** 12

**RMS%** 4.72 – 8.37

**Maximum measured resistivity (ohm-m)** 1.7



**FIGURE S9. CRP transect 8-9-6.**



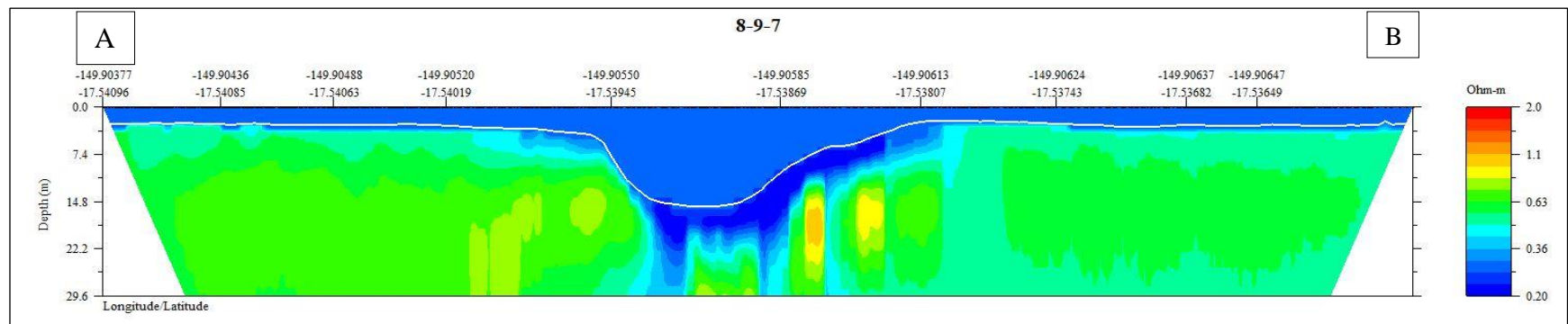
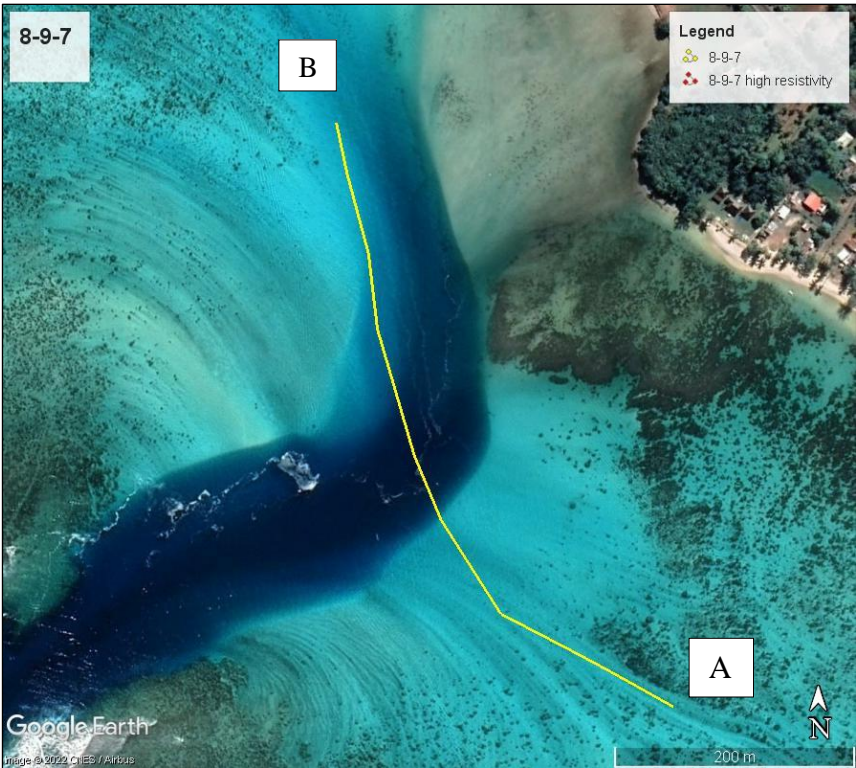
**Survey Name** 8-9-7

**Survey Length (meters)** 864

**Electrode Spacing (meters)** 12

**RMS% 3.96 – 9.35**

**Maximum measured resistivity (ohm-m)** 1.1



**FIGURE S10. CRP transect 8-9-7.**

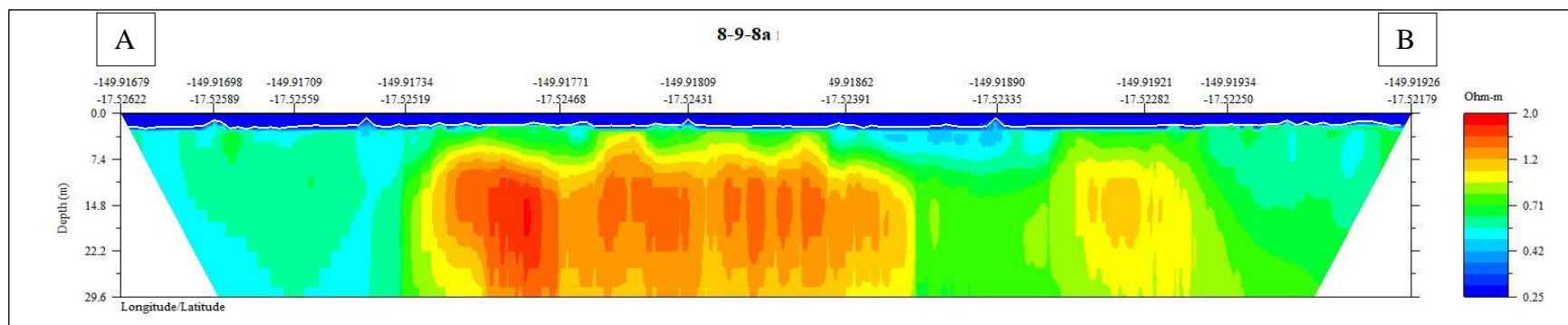
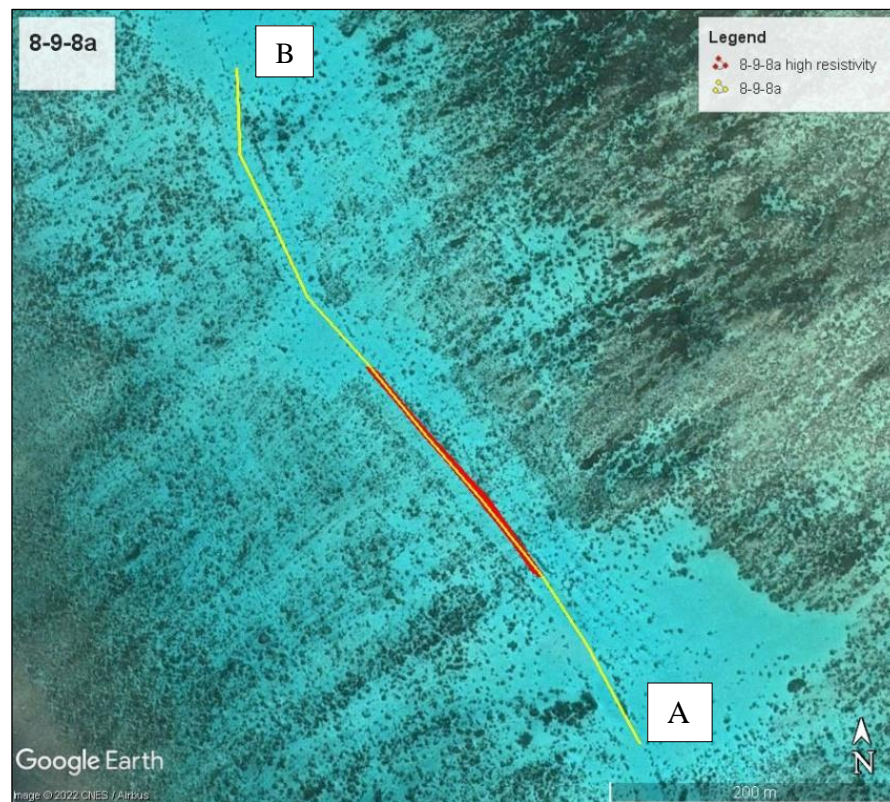
**Survey Name** 8-9-8a

**Survey Length (meters)** 605

**Electrode Spacing (meters)** 12

**RMS%** 3.43 – 7.64

**Maximum measured resistivity (ohm-m)** 1.9



**FIGURE S11 CRP transect 8-9-8a**



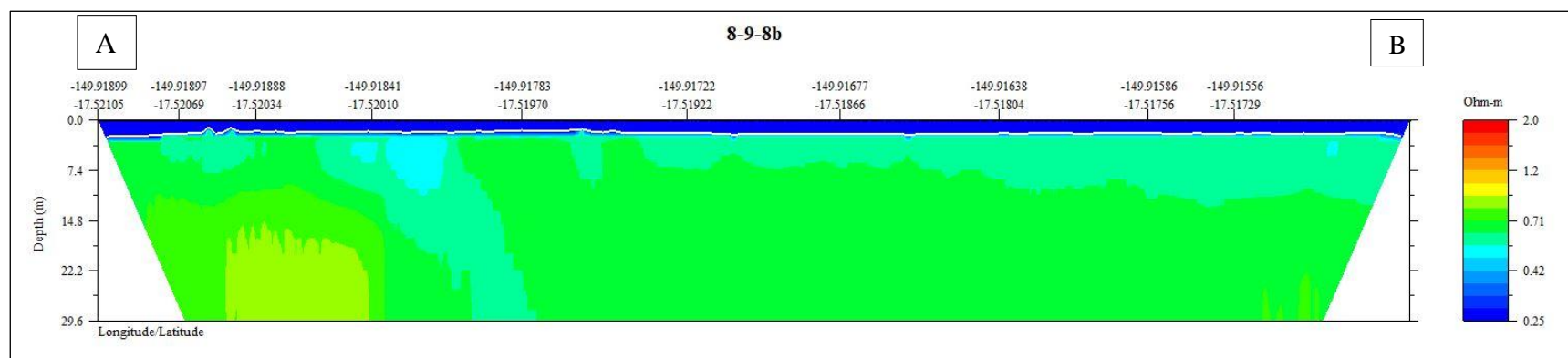
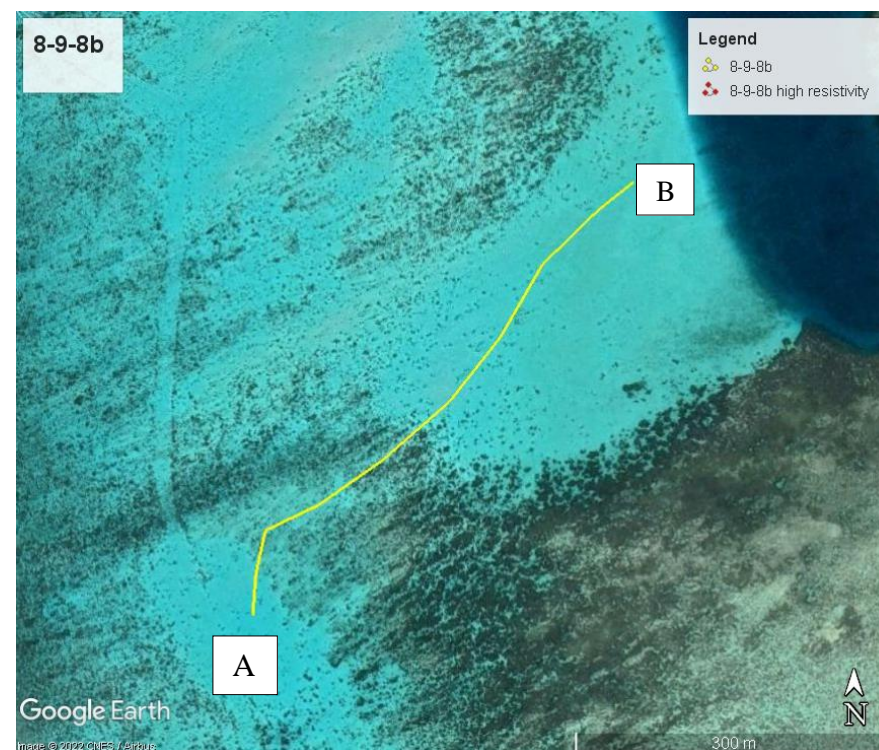
**Survey Name** 8-9-8b

**Survey Length (meters)** 661

**Electrode Spacing (meters)** 12

**RMS%** 3.02 – 6.23

**Maximum measured resistivity (ohm-m)** 0.89



**FIGURE S12. CRP transect 8-9-8b.**

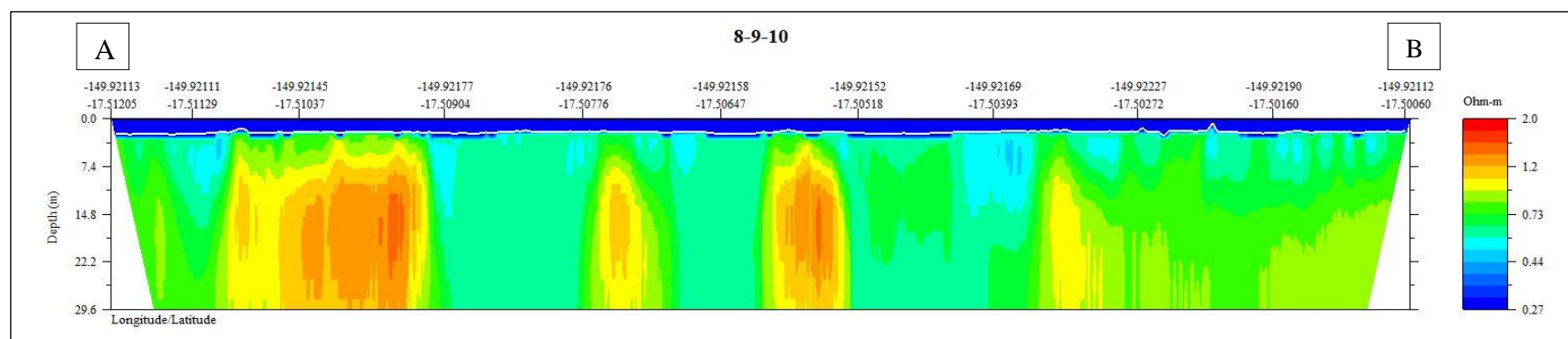
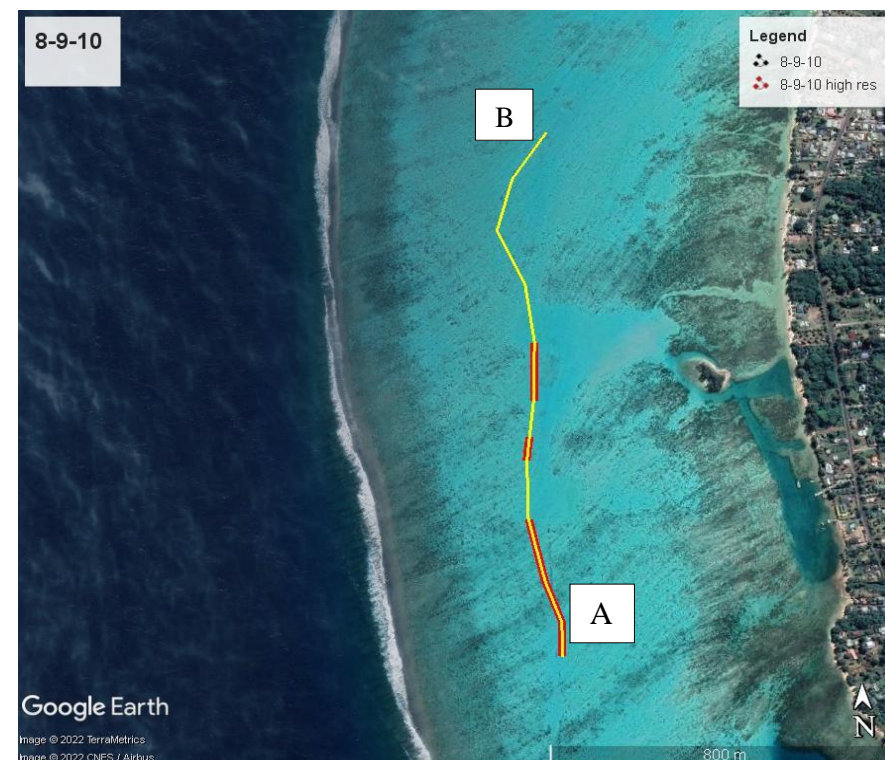
**Survey Name** 8-9-10

**Survey Length (meters)** 1330

**Electrode Spacing (meters)** 12

**RMS%** 4.06 – 6.86

**Maximum measured resistivity (ohm-m)** 1.5



**FIGURE S13. CRP transect 8-9-10.**