

Table S1. Fruit diameter of chile peppers affected by the interaction between cultivar and biostimulant treatment in 2020 and 2021.

Cultivar	Biostimulant	Fruit diameter (mm)					
		2020			2021		
		July ^{1,2}	August	September	July	August	September
Anaheim Chili	Tribus	33.8 c	29.2 de	24.4 h-j	28.0 g	29.0 gh	27.5 gh
	Vitazyme	32.6 c	30.7 c-e	26.8 f-h	27.8 g	28.5 h	26.6 hi
	C-BIO CPS	32.8 c	28.7 e	27.2 e-h	28.6 g	29.9 f-h	27.9 gh
	Control	34.9 c	30.6 cde	25.5 g-i	30.0 fg	30.2 e-h	29.4 e-h
Ancho or Poblano	Tribus	46.9 ab	39.9 b	40.1 bc	45.5 c	46.7 bc	40.6 bc
	Vitazyme	47.0 ab	43.0 ab	37.7 c	46.9 bc	47.5 bc	41.3 bc
	C-BIO CPS	44.0 b	42.2 ab	38.0 c	45.4 c	46.7 bc	43.0 bc
	Control	46.6 ab	45.0 a	38.1c	43.6 c	45.5 c	40.1 c
Big Jim	Tribus	35.1 c	31.1 c-e	28.9 e-g	30.5 fg	32.3 d-g	30.4 d-g
	Vitazyme	35.1 c	32.4 cd	33.1 d	31.4 fg	31.0 d-h	28.3 f-h
	C-BIO CPS	35.9 c	32.2 cd	28.9 e-g	31.1 fg	32.9 d-f	31.4 d-f
	Control	35.4 c	32.4 cd	28.4 e-g	33.3 ef	32.2 d-g	30.9 d-g
Cayenne Purple	Tribus	14.4 f	14.0 g	14.5 no	14.9 k	13.5 lm	12.6 no
	Vitazyme	12.9 f-h	12.4 gh	13.2 o	16.5 jk	15.1 l	15.3 l-n
	C-BIO CPS	15.5 ef	13.5 g	14.0 o	16.3 jk	14.6 l	14.4 l-n
	Control	13.2 fg	12.5 gh	12.8 o	15.2 k	13.8 l	13.7 mn
Chile de Arbol	Tribus	8.7 h	9.2 h	8.3 p	9.1 l	10.1 mn	9.2 po
	Vitazyme	8.9 gh	9.4 h	8.3 p	9.0 l	8.6 n	9.2 po
	C-BIO CPS	9.5 gh	9.6 h	9.0 p	9.1 l	8.9 n	9.3 po
	Control	8.9 gh	9.5 h	8.6 p	8.8 l	9.3 n	8.9 p
Jamaica Hot Red	Tribus	45.1 ab	44.7 a	44.2 a	47.5 a-c	52.1 a	46.8 a
	Vitazyme	49.8 a	45.3 a	43.9 ab	51.5 a	49.6 ab	43.5 a-c
	C-BIO CPS	44.2 b	43.1 ab	43.0 ab	49.9 ab	46.7 bc	43.7 ab
	Control	45.8 ab	42.2 ab	45.6 a	46.3 bc	47.4 bc	43.9 ab
Mulato Isleno	Tribus	23.3 d	21.0 f	22.6 i-k	21.2 hi	20.9 i-k	20.4 jk
	Vitazyme	22.8 d	19.8 f	22.5 i-l	21.1 hi	21.9 i-k	22.2 j
	C-BIO CPS	22.5 d	19.8 f	20.5 k-m	22.7 h	24.1 i	23.6 ij
	Control	22.4 d	20.0 f	20.7 j-m	22.1 hi	22.6 ij	22.6 j
Padron	Tribus	34.7 c	31.7 c-e	29.3 d-f	32.7 ef	33.5 de	32.7 de
	Vitazyme	35.5 c	32.5 cd	31.1 de	35.8 de	32.8 d-f	32.2 de
	C-BIO CPS	34.9 c	33.3 c	30.2 d-f	38.1 d	32.6 d-g	32.9 d
	Control	34.0 c	31.9 c-e	28.4 e-g	36.2 de	34.4 d	32.9 d
Pasilla Bajio	Tribus	21.1 d	19.5 f	19.9 k-m	18.6 i-k	19.2 jk	17.8 kl
	Vitazyme	21.1 d	20.0 f	17.8 mn	19.8 h-j	18.8 k	17.2 k-m
	C-BIO CPS	21.0 d	20.2 f	18.9 lm	19.5 h-j	18.8 k	17.2 kl
	Control	19.8 de	19.0 f	18.2 mn	18.4 i-k	19.2 jk	17.6 kl
P-value	Cultivar	<.0001	<.0001	<.0001	<.0001	<.0001	<.0001
	Biostimulant	0.49	0.40	0.053	0.0006	0.66	0.041
	Cultivar*Biostimulant	0.032	0.0008	<.0001	0.0001	<.0001	<.0001

¹ Different lower-case letters suggest significant difference among means within a column indicated by Tukey's HSD test at $P \leq 0.05$. ² Highlighted areas indicate variations of tested variable among biostimulant treatments within a given cultivar.

Table S2. Fruit color of chile peppers affected by the interaction between cultivar and biostimulant treatment in 2020.

Cultivar	Biostimulant	L ^{1,2}	2020							
			July			August			September	
			a*	b*	L	a*	b*	L	a*	b*
Anaheim Chili	Tribus	39.7 f-h	-15.5 h-k	25.4 gh	42.1 fg	-15.7 h-k	29.4 f-j	40.5 gh	-13.2 f-i	24.7 g-j
	Vitazyme	40.1 f-h	-14.9 h-k	24.9 h	42.4 e-g	-15.0 h-k	28.7 g-j	40.8 gh	-11.4 f-i	24.2 g-j
	C-BIO CPS	38.8 f-h	-14.9 h-k	25.0 gh	41.3 fg	-12.7 g-k	26.7 j	41.6 f-g	-13.5 f-i	26.1 f-i
	Control	38.0 gh	-14.6 h-k	23.3 h	41.1 fg	-13.7 h-k	27.3 ij	40.2 gh	-9.5 e-i	25.0 g-j
Ancho or Poblano	Tribus	29.6 i-l	-8.3 c-e	10.3 i-k	32.2 h-j	-8.9 f-k	14.1 kl	30.2 k-o	6.8 c-e	12.5 m-o
	Vitazyme	30.6 i-k	-9.5 e-g	12.0 ij	33.1 h	-11.1 g-k	15.1 k	31.9 k-n	-5.9 d-i	13.9 l-n
	C-BIO CPS	30.2 i-l	-8.9 d-f	11.1 ij	33.0 hi	-10.5 g-k	14.1 kl	32.4 k-m	5.6 c-e	14.2 l-n
	Control	30.4 i-k	-9.5 e-g	12.4 i	33.6 h	-11.6 g-k	15.7 k	32.9 kl	-6.2 d-i	14.8 k-m
Big Jim	Tribus	45.9 c-e	-16.8 h-k	33.2 c-f	49.7 a-d	-16.5 i-k	35.2 d-g	46.8 d-f	-17.3 hi	35.9 de
	Vitazyme	46.2 c-e	-17.3 h-k	34.6 b-f	49.9 a-d	-15.9 i-k	37.0 c-e	44.5 e-g	-11.2 f-i	32.4 ef
	C-BIO CPS	46.9 b-e	-17.0 h-k	34.6 b-f	49.9 a-d	-17.1 jk	37.3 c-e	46.3 d-f	-17.2 i	35.8 de
	Control	49.1 a-d	-16.9 h-k	36.2 a-f	48.8 cd	-15.5 i-k	35.5 d-g	46.8 d-f	-14.8 g-i	35.5 de
Cayenne Purple	Tribus	35.1 hi	1.0 ab	10.9 ij	31.2 h-j	4.0 b-f	8.2 lm	29.2 l-o	16.0 bc	7.6 n-p
	Vitazyme	28.3 j-l	1.4 ab	6.6 j-l	28.0 h-j	6.7 b-e	6.9 m	26.4 o	5.3 c-e	5.0 p
	C-BIO CPS	30.4 i-k	5.2 a	4.3 l	29.5 h-j	12.1 ab	4.1 m	25.3 o	7.8 cd	2.1 p
	Control	32.0 ij	4.4 a	7.4 i-l	29.6 h-j	9.6 bc	6.8 m	25.5 o	6.4 c-e	1.8 p
Chile de Arbol	Tribus	51.3 ab	-19.1 jk	39.1 ab	45.7 d-g	10.5 ab	33.8 d-i	35.0 i-k	32.1 ab	20.6 h-k
	Vitazyme	49.4 a-d	-19.3 jk	38.4 a-d	46.7 d-f	11.0 ab	34.9 d-g	34.7 jk	31.3 ab	20.1 i-l
	C-BIO CPS	50.2 a-c	-19.0 jk	37.7 a-d	44.9 d-g	9.1 b-d	32.5 e-j	33.6 kl	31.0 ab	19.0 j-m
	Control	51.7 ab	-19.4 k	38.7 a-c	40.8 g	23.3 a	27.6 h-j	34.1 kl	33.0 a	19.6 i-l
Jamaica Hot Red	Tribus	53.4 a	-16.7 h-k	39.9 ab	54.7 a-c	-15.4 h-k	44.4 a-c	51.2 a-d	7.5 cd	44.6 ab
	Vitazyme	53.9 a	-15.5 h-k	38.4 a-d	55.2 ab	-14.9 h-k	46.1 a	54.6 a	0.2 c-g	46.2 a
	C-BIO CPS	53.8 a	-15.8 h-k	40.8 a	54.8 ab	-15.3 h-k	44.6 ab	54.0 ab	1.2 c-f	46.1 a
	Control	53.7 a	-13.3 e-h	40.2 ab	56.1 a	-15.1 h-k	45.3 ab	52.1 a-c	4.8 c-e	43.4 a-c
Mulato Isleno	Tribus	49.2 a-d	-18.2 h-k	37.3 a-d	49.7 b-d	-9.7 g-k	40.0 a-d	50.1 a-d	-15.4 g-i	39.0 b-d
	Vitazyme	50.3 a-c	-14.3 g-j	36.7 a-e	48.5 d	-2.5 c-h	37.6 c-e	49.5 b-e	-16.4 hi	37.9 c-e
	C-BIO CPS	49.7 a-d	-13.9 f-i	36.6 a-f	48.0 de	-0.3 b-g	36.4 de	48.2 c-e	-7.1 d-i	35.4 de
	Control	50.5 a-c	-18.3 h-k	38.7 a-c	49.3 b-d	-5.4 e-k	38.5 b-e	52.1 a-c	-14.7 g-i	41.3 a-d
Padron	Tribus	42.4 e-g	-17.3 h-k	30.8 e-g	44.9 d-g	-14.8 h-k	33.3 d-j	39.2 h-j	3.0 c-f	26.0 g-i
	Vitazyme	42.3 e-g	-17.3 h-k	30.8 fg	44.7 d-g	-12.2 g-k	34.7 d-h	39.1 h-j	-4.7 d-i	26.3 f-h
	C-BIO CPS	45.1 de	-18.7 i-k	35.3 a-f	45.3 d-g	-17.7 k	36.0 d-f	41.2 gh	-3.4 d-i	28.9 fg
	Control	43.3 ef	-18.0 h-k	33.0 d-f	41.6 fg	-7.1 f-k	31.8 e-j	39.9 g-i	-4.7 d-i	27.4 fg
Pasilla Bajio	Tribus	26.0 kl	-3.1 bc	4.3 l	26.6 j	-3.6 d-i	4.5 m	27.8 m-o	-3.8 d-i	7.1 op
	Vitazyme	25.8 kl	-3.1 b	4.3 l	27.8 h-j	-4.2 e-j	5.5 m	27.3 no	-1.0 c-h	5.7 p
	C-BIO CPS	25.2 l	-3.1 bc	4.3 kl	26.7 j	-3.9 d-i	5.3 m	27.9 m-o	-4.1 d-i	7.3 op
	Control	25.8 kl	-3.6 b-d	4.7 kl	27.3 ij	-4.3 e-j	5.7 m	27.3 no	-3.5 d-i	5.6 p
P-value	Cultivar	<.0001	<.0001	<.0001	<.0001	<.0001	<.0001	<.0001	<.0001	<.0001
	Biostimulant	0.26	0.26	0.39	0.23	0.038	0.12	0.96	0.098	0.69
	Cultivar*Biostimulant	0.0053	0.017	0.020	0.22	0.020	0.11	0.005	0.047	0.0024

¹ Different lower-case letters suggest significant difference among means within a column indicated by Tukey's HSD test at $P \leq 0.05$. ² Highlighted areas indicate variations of tested variable among biostimulant treatments within a given cultivar.

Table S3. Fruit color of chile peppers affected by the interaction between cultivar and biostimulant treatment in 2021.

Cultivar	Biostimulant	L ^{1,2}	2021							
			July			August			September	
			a*	b*	L	a*	b*	L	a*	b*
Anaheim Chili	Tribus	39.5 i	-15.1 f	22.5 j	40.0 k	-15.7 d-g	25.6 mn	39.3 g-i	-13.8 f-j	24.4 h
	Vitazyme	39.9 hi	-15.2 fg	22.8 ij	40.2 jk	-15.0 d	26.1 mn	37.7 i	-5.8 b-i	22.0 h
	C-BIO CPS	40.2 hi	-15.4 fg	23.8 h-j	40.4 jk	-15.6 d-f	25.2 n	39.1 hi	-11.4 d-j	24.2 h
	Control	39.8 i	-15.4 fg	23.0 h-j	41.1 jk	-16.0 d-h	26.4 l-n	38.8 hi	-6.5 b-i	24.4 gh
Ancho or Poblano	Tribus	28.2 j-l	-6.9 e	8.1 kl	31.1 l-n	-8.7 c	10.9 op	32.1 j	-1.0 a-e	14.5 i
	Vitazyme	29.4 j-l	-7.5 e	8.9 k	32.7 l	-10.6 c	13.8 o	31.3 j-l	-10.3 d-j	13.6 i
	C-BIO CPS	29.5 j-l	-7.4 e	8.8 k	31.4 lm	-9.8 c	12.2 op	31.7 jk	-2.6 a-f	14.8 i
	Control	28.9 j-l	-7.3 e	8.6 k	32.2 lm	-11.0 c	14.6 o	32.4 j	-9.2 c-j	13.8 i
Big Jim	Tribus	49.6 c-f	-18.4 j-l	36.8 b-e	48.3 e-g	-16.8 d-i	35.3 g-k	47.3 c-f	-14.6 f-j	35.2 d-f
	Vitazyme	48.4 d-f	-17.8 i-l	35.2 c-e	48.1 e-h	-17.3 d-i	36.3 g-j	46.9 c-f	-8.7 c-j	34.4 ef
	C-BIO CPS	46.1 fg	-17.0 f-k	32.6 ef	45.8 f-i	-16.2 d-i	32.5 jk	44.4 d-f	-16.2 g-j	31.1 f
	Control	47.0 e-g	-17.7 h-l	34.1 d-f	47.6 e-i	-16.8 d-i	34.9 h-k	48.1 cd	-17.1 h-j	35.9 d-f
Cayenne Purple	Tribus	30.7 j	2.4 a	5.8 k-m	30.7 l-n	0.9 a	7.9 pq	31.0 j-l	5.5 ab	10.5 i-k
	Vitazyme	30.4 jk	-0.6 bc	7.9 kl	30.1 l-o	0.7 a	8.6 pq	31.8 jk	-0.4 a-e	12.4 ij
	C-BIO CPS	26.4 l	3.5 a	1.5 m	28.4 m-o	2.5 a	4.8 q	26.4 l	3.1 a-c	4.7 k
	Control	28.9 j-l	1.9 ab	4.9 k-m	28.9 l-o	2.6 a	5.2 q	30.5 j-l	9.7 a	11.0 i-k
Chile de Arbol	Tribus	50.6 b-d	-19.4 l	37.6 b-d	50.1 c-e	-19.2 i	39.5 d-h	47.1 c-f	-9.0 c-j	37.4 d-f
	Vitazyme	49.6 c-f	-19.5 l	37.1 b-d	49.8 d-f	-18.9 hi	39.3 e-h	51.9 bc	-19.8 j	41.2 b-d
	C-BIO CPS	50.5 b-e	-19.3 kl	37.4 b-d	50.4 c-e	-18.9 hi	39.7 c-h	51.6 bc	-18.4 ij	40.6 c-e
	Control	48.2 d-f	-19.3 kl	35.6 b-e	49.2 d-g	-18.7 g-i	38.3 f-i	46.4 d-f	-6.9 b-i	34.9 d-f
Jamaica Hot Red	Tribus	50.8 a-d	-16.9 f-k	37.7 b-d	55.8 ab	-15.2 de	44.7 a-c	56.0 ab	-7.0 b-i	47.7 ab
	Vitazyme	53.6 ab	-15.5 f-i	40.0 ab	57.0 a	-16.1 d-h	44.9 ab	57.0 a	-5.7 b-h	48.7 a
	C-BIO CPS	54.2 a	-17.4 f-l	42.4 a	57.0 a	-16.0 d-h	47.3 a	58.0 a	-9.0 c-j	49.1 a
	Control	52.8 a-c	-16.5 f-j	39.0 a-c	55.8 ab	-15.2 de	44.3 a-d	54.8 ab	1.3 a-d	45.6 a-c
Mulato Isleno	Tribus	49.7 c-e	-19.5 l	37.2 b-d	49.7 d-f	-17.0 d-i	39.5 d-h	47.8 cd	-12.6 e-j	36.6 d-f
	Vitazyme	49.8 c-e	-19.7 l	38.5 a-d	52.4 b-d	-18.3 f-i	43.5 a-e	47.5 c-e	-3.0 a-f	37.0 d-f
	C-BIO CPS	50.4 b-e	-19.8 l	38.6 a-c	50.6 c-e	-15.9 d-g	40.1 a-g	47.8 cd	-12.4 e-j	36.6 d-f
	Control	49.9 c-e	-19.2 kl	37.6 b-d	53.9 a-c	-18.7 g-i	43.1 a-f	47.9 cd	-12.7 e-j	36.3 d-f
Padron	Tribus	41.8 hi	-17.0 f-k	27.0 g-i	43.6 i-k	-17.9 d-i	31.3 j-l	42.5 f-i	-11.3 d-k	30.9 fg
	Vitazyme	41.6 hi	-16.7 f-j	26.8 g-j	43.7 i-k	-17.2 d-i	30.6 k-m	42.8 e-h	-12.0 e-j	31.9 f
	C-BIO CPS	43.4 h	-17.5 g-l	29.8 fg	45.5 g-i	-18.3 f-i	33.7 i-k	43.4 d-h	-17.1 h-j	32.3 f
	Control	42.0 hi	-17.0 f-k	27.3 gh	44.0 h-j	-18.2 e-i	32.3 jk	44.2 d-g	-11.0 d-j	33.8 f
Pasilla Bajio	Tribus	26.3 l	-2.5 cd	3.3 m	27.2 no	-3.7 b	4.7 q	26.6 l	-4.1 b-g	6.0 jk
	Vitazyme	26.7 kl	-2.2 cd	2.9 m	27.2 no	-3.2 b	4.2 q	27.0 kl	-4.8 b-h	6.5 jk
	C-BIO CPS	26.4 l	-2.4 cd	3.1 m	26.6 o	-3.3 b	4.1 q	26.9 kl	-4.5 b-h	5.9 jk
	Control	26.8 kl	-3.0 d	3.8 lm	26.2 o	-3.1 b	4.0 q	27.6 j-l	-4.3 b-g	5.8 k
P-value	Tribus	<.0001	<.0001	<.0001	<.0001	<.0001	<.0001	<.0001	<.0001	<.0001
	Biostimulant	0.41	0.78	0.37	0.38	0.28	0.17	0.6576	0.015	0.42
	Cultivar*Biostimulant	<.0001	<.0001	<.0001	0.023	0.04	0.0009	<.0001	<.0001	0.0003

¹ Different lower-case letters suggest significant difference among means within a column indicated by Tukey's HSD test at $P \leq 0.05$. ² Highlighted areas indicate variations of tested variable among biostimulant treatments within a given cultivar.

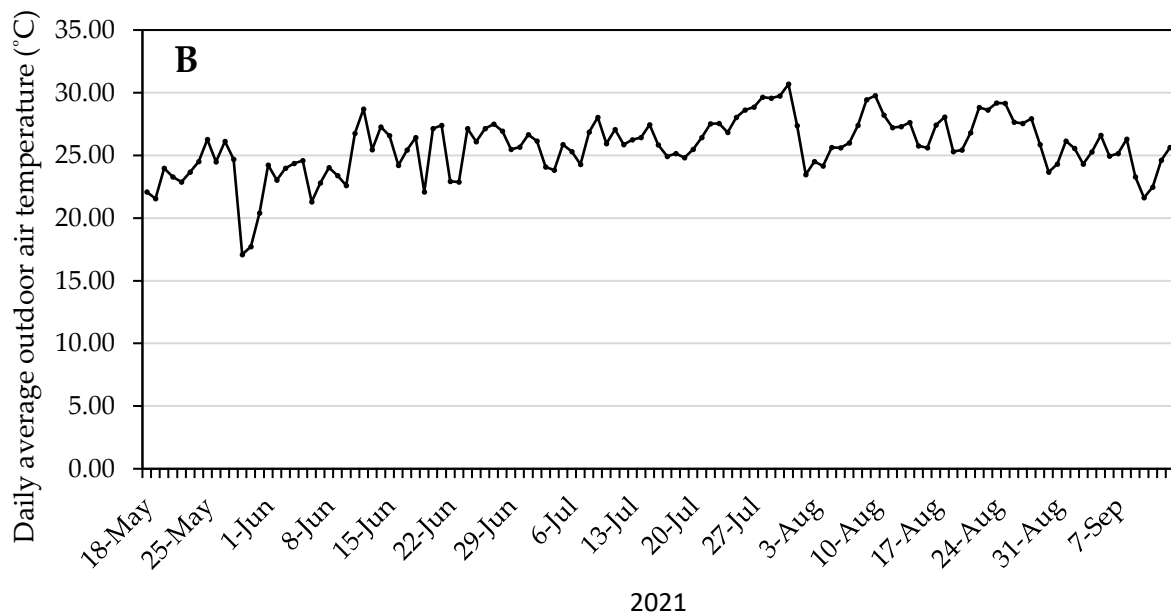
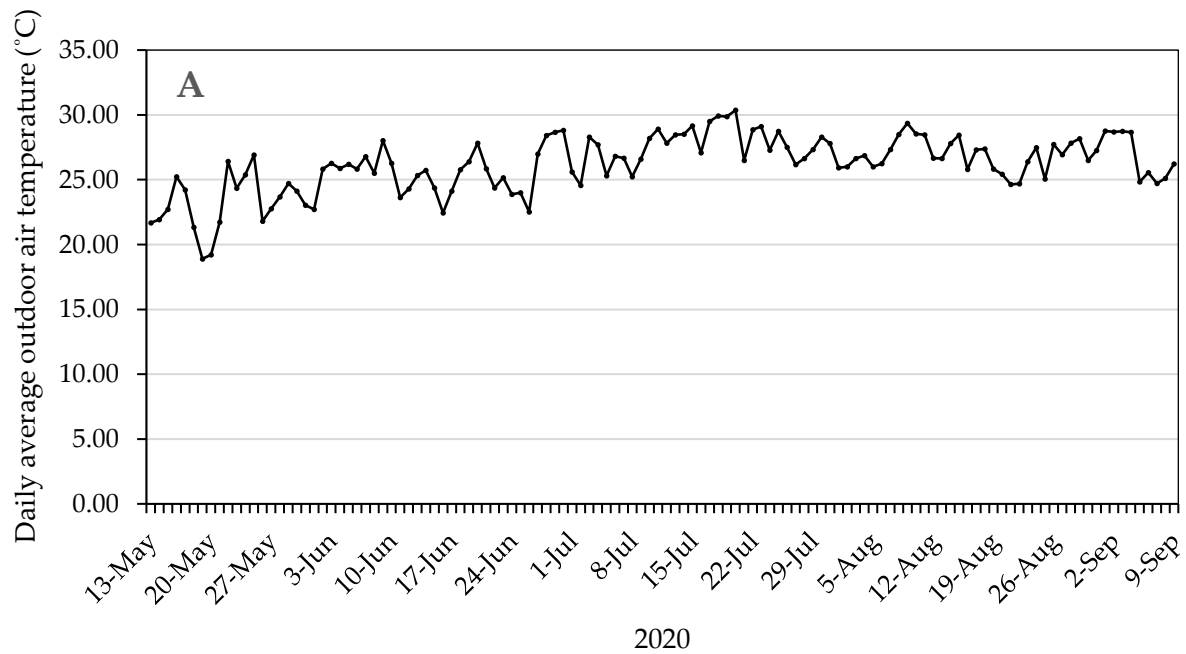


Figure S1. Daily average outdoor air temperatures within the experiment duration in 2020 (A) and 2021 (B). Outdoor air temperatures were recorded by a temperature and relative humidity sensor (HOBO S-THB-M002; Onset Computer Corp.) at one-hour intervals connected to a data logger (HOBO Micro Station H21-002; Onset Computer Corp.).