

Figure S1. Progenies of dandelion tissue culture plantlets grown on saline-alkali land. Panels A to F show phenotypes of lines obtained from treatments Y1 to Y6, respectively. Panel G show a parental line ("Daye"). Panel H show the observation nursery.

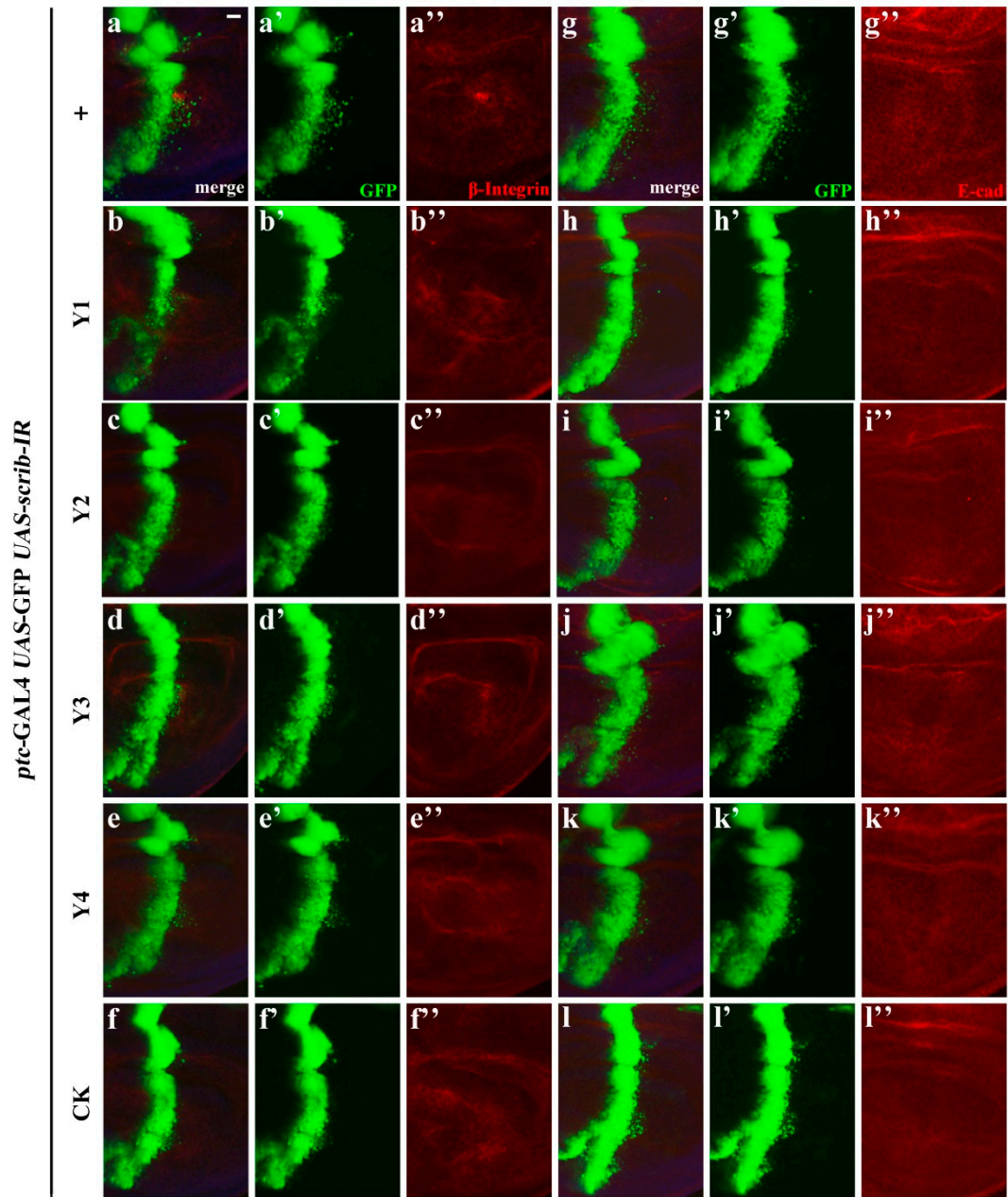


Figure S2. Dandelion extract suppresses β -integrin accumulation and reduced E-cadherin level induced by loss of scrib. Fluorescence micrographs of third-instar larval wing discs stained with anti- β -integrin (red) (a-f) or anti-E-cadherin (cad) antibody (red) (g-l) were shown. Scale bar: 20 μ m (a-k).