

Figure S1. Kiwifruit cv Hayward. A. plants used for plantation. B. Plant from the experimental orchard at the second year of growth.

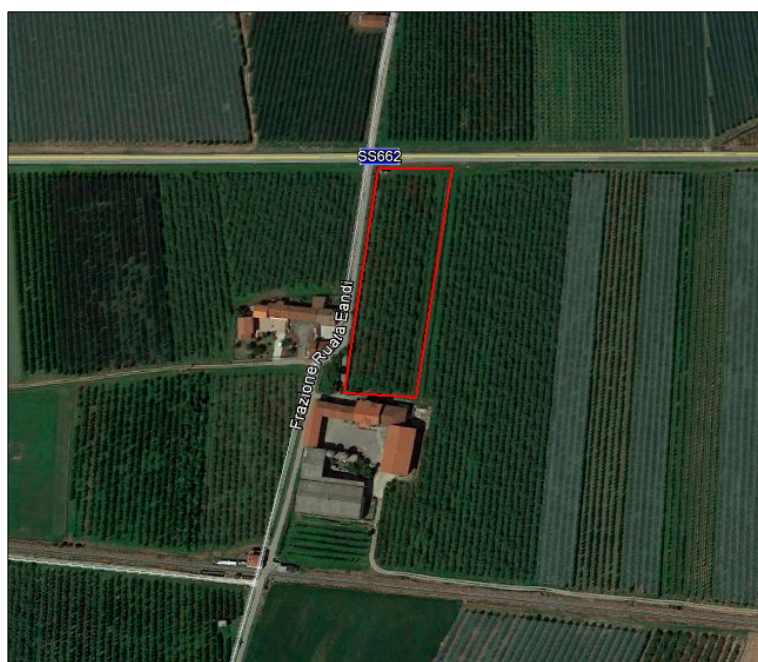


Figure S2. Field where the experimental orchard was planted (Saluzzo, CN, 44°38'49.8"N 7°31'52.6"E).

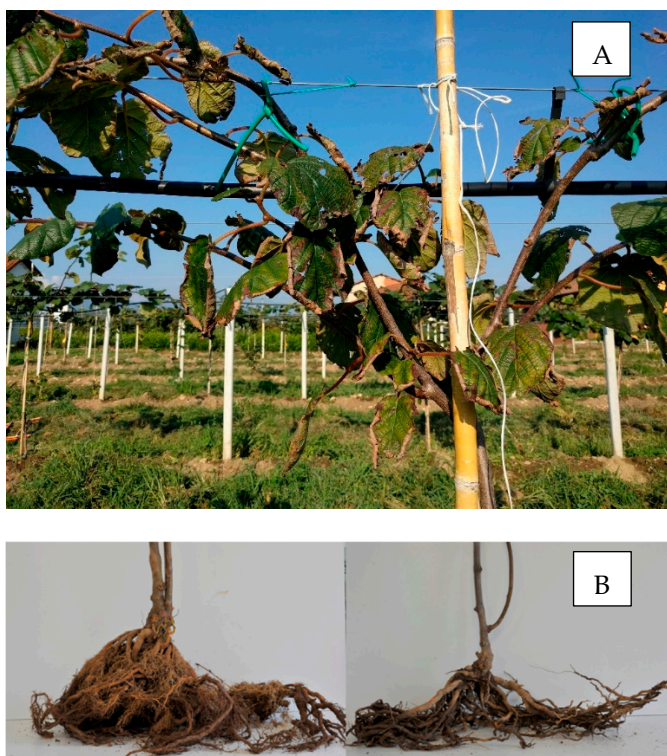


Figure S3. KiDS symptoms found in Saluzzo region. A. leaves chlorosis and desiccation, petiole wilt. B. roots from a healthy (left) and from a KiDS affected (right) plant.



Figure S4. Typical early bacterial disease PSA symptoms (canker, cortical necrosis, exudates).

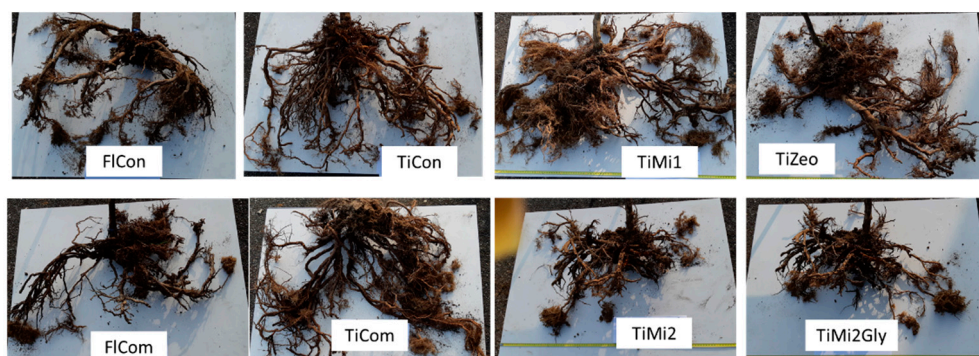


Figure S5. Entire root systems of plants explanted at the end of the trial (end of the third year).