

Supplementary materials

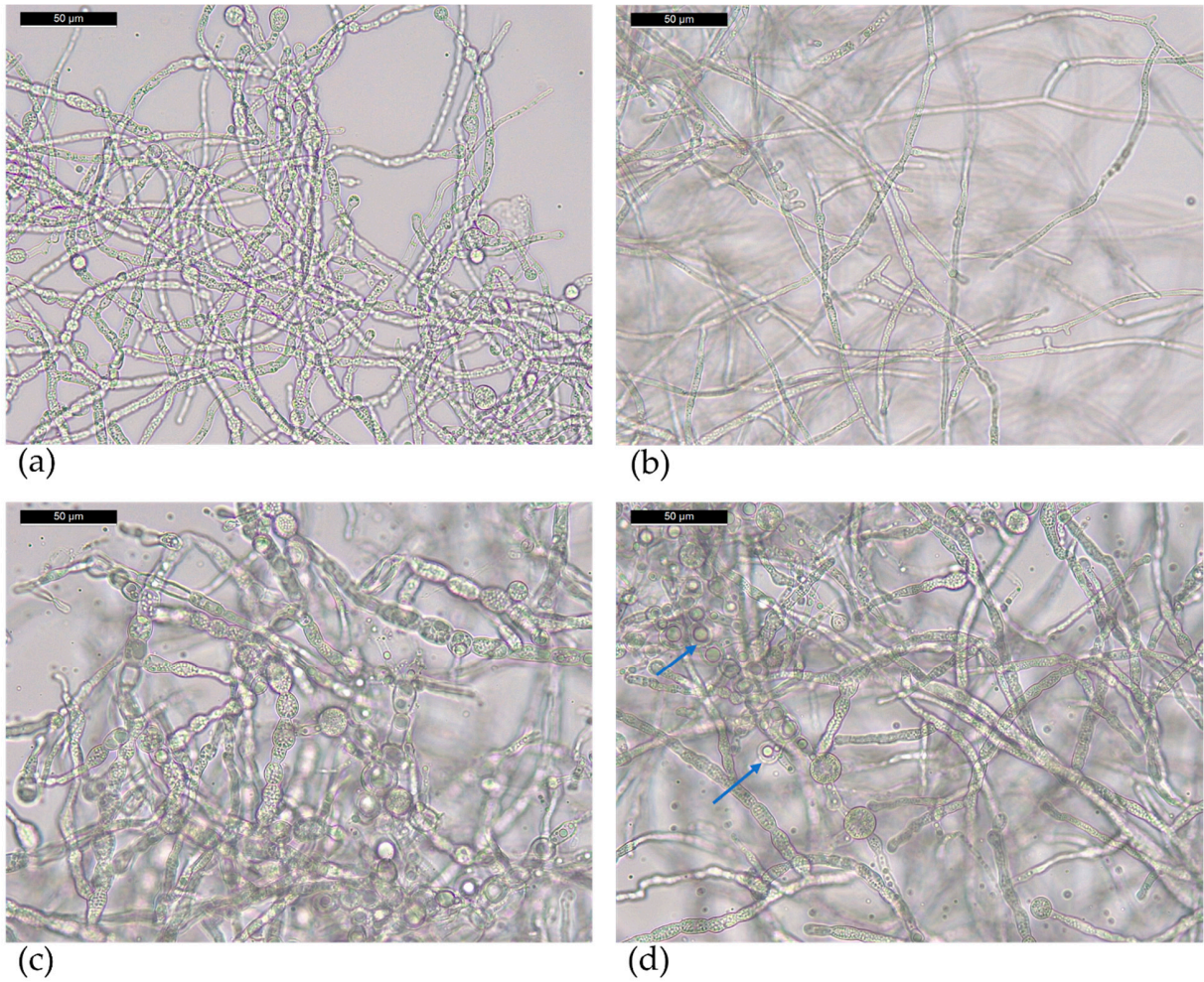


Figure S1. Optical microscopical images of *T. asperellum* T36 NCAIM F 001434 grown in PDB (a, b) and cornmeal medium (c, d). The blue arrows indicate the presence of vacuoles/droplets inside hyphae.

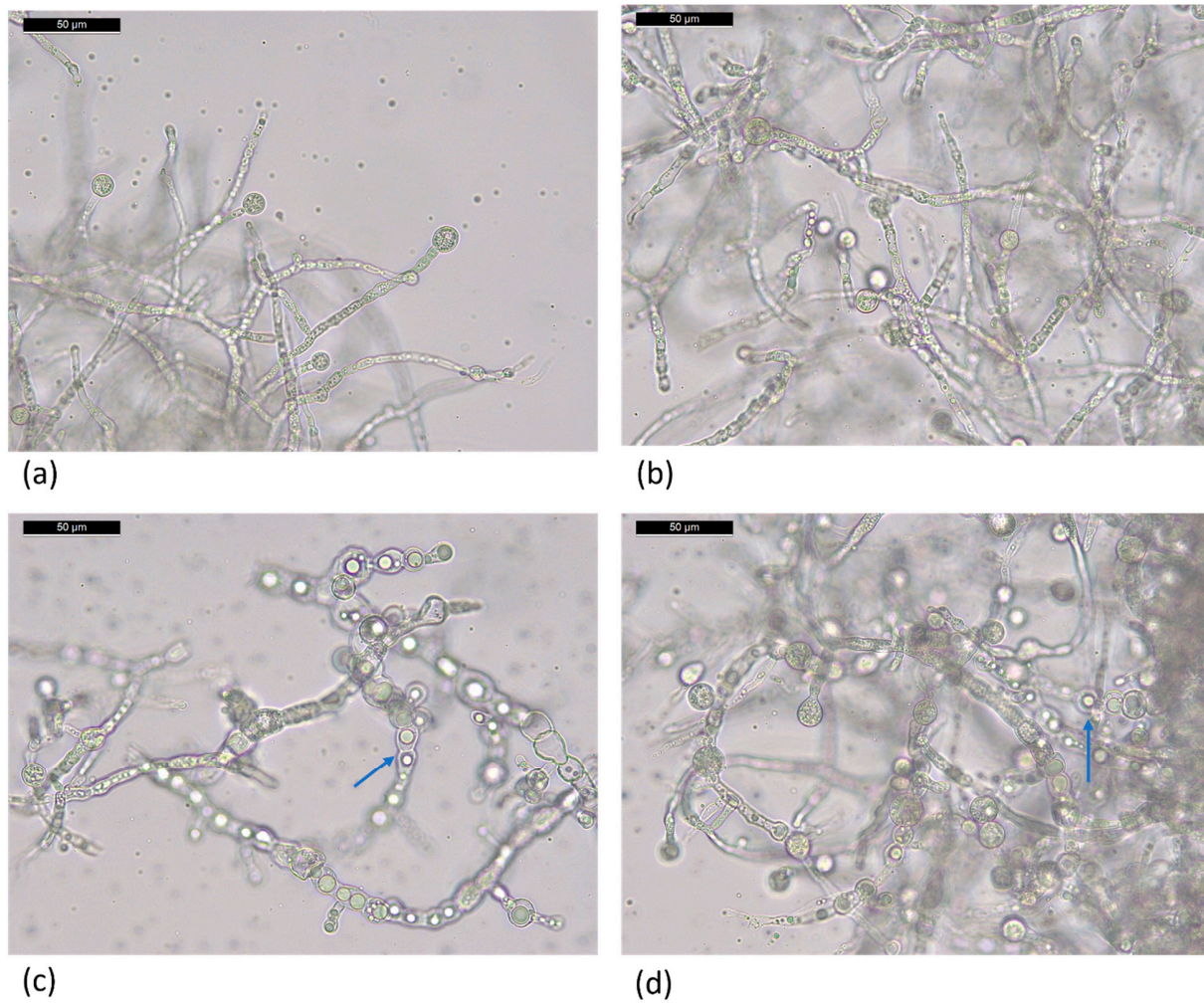


Figure S2. Optical microscopical images of *T. harzianum*, Td50b, NCAIM F001412 grown in PDB (a, b) and cornmeal medium (c, d). The blue arrows indicate the presence of vacuoles/droplets inside hyphae.

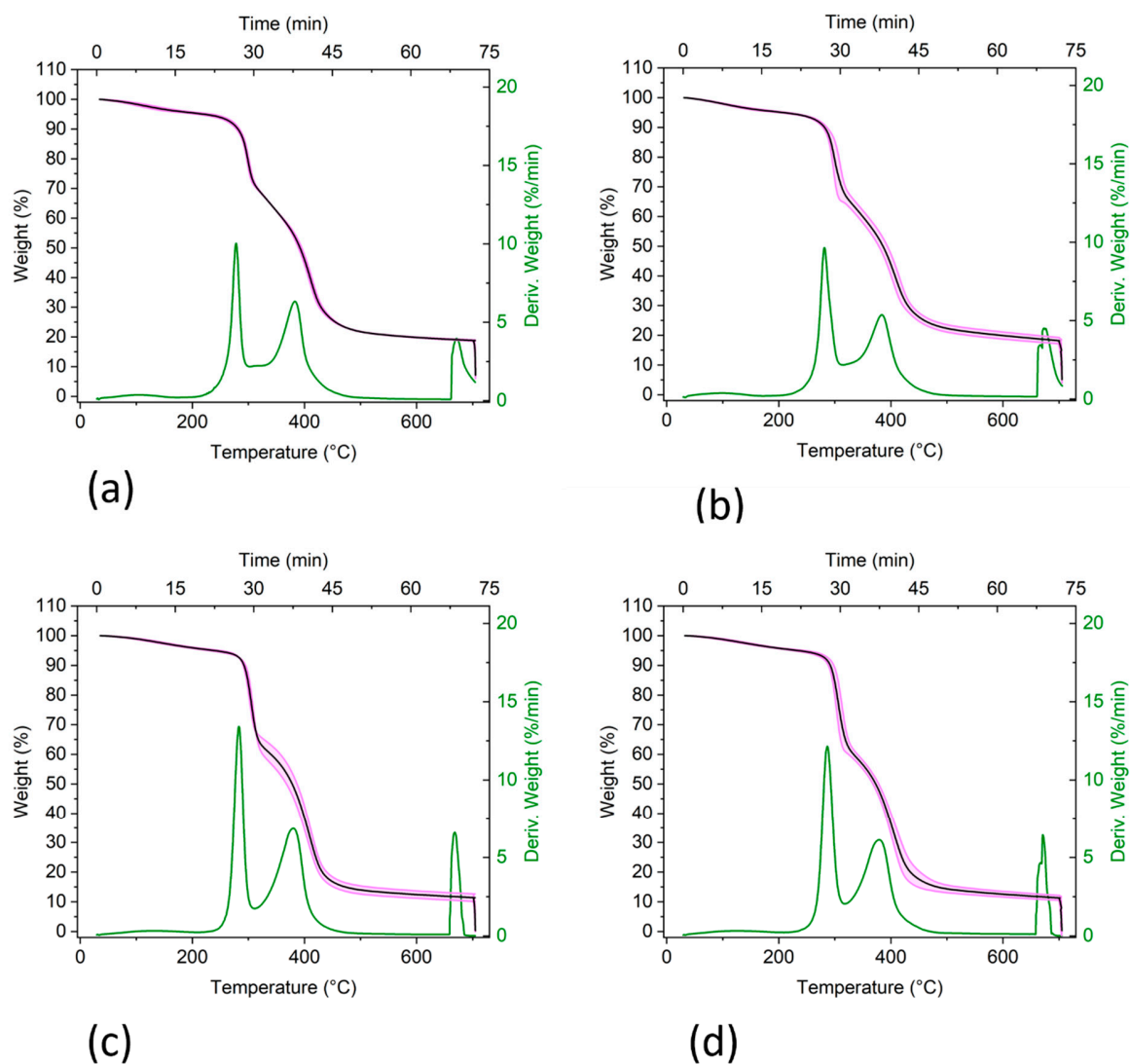


Figure S3. Thermogravimetric analysis of *T. asperellum* T36 NCAIM F 001434 (a, c) and *T. harzianum*, Td50b, NCAIM F001412 (b, d) grown in PDB (a, b) and cornmeal medium (c, d). The weight (%) is shown with the error bar limits (light magenta).