

<Supplementary data>

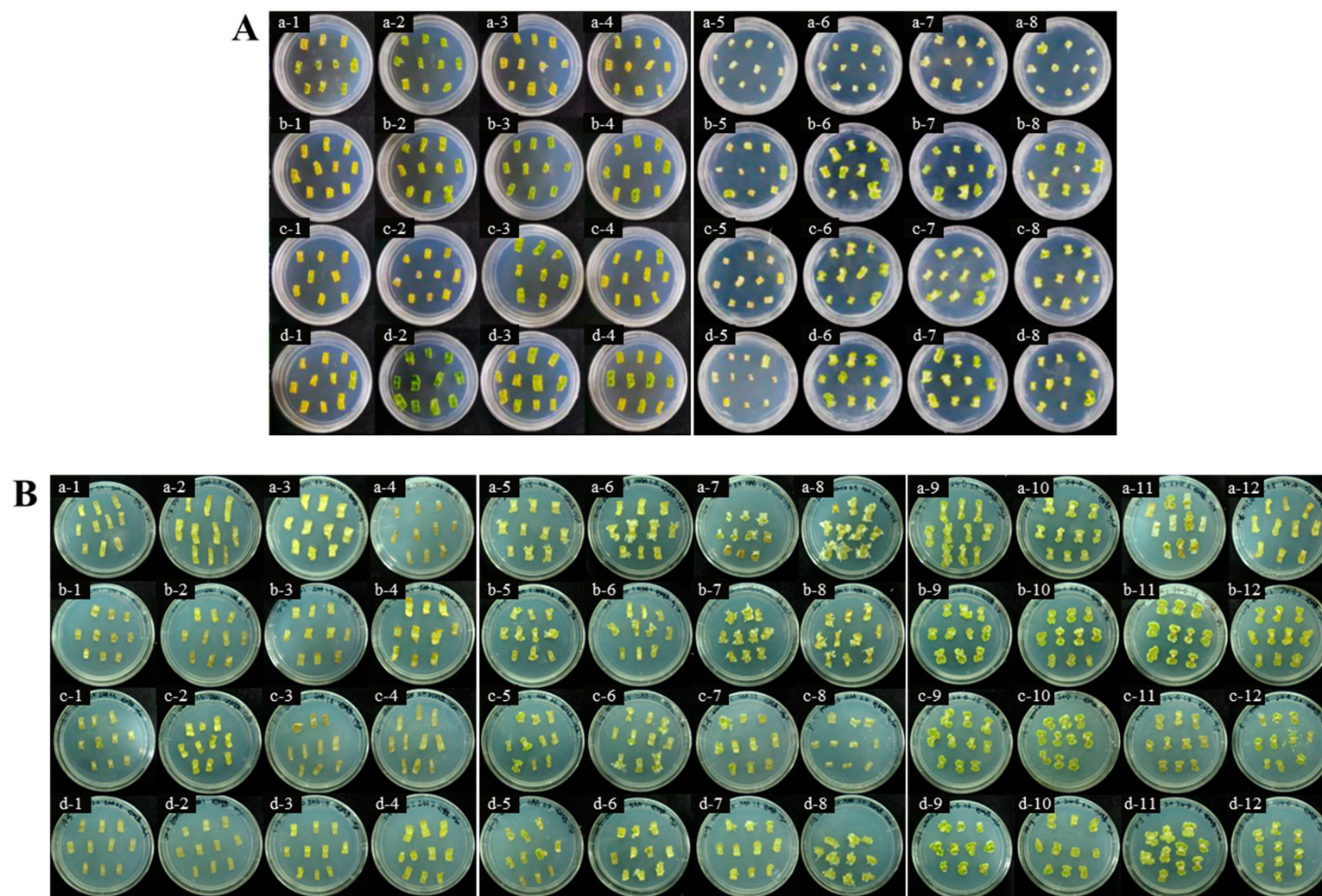


Figure S1. Appearance of callus induced from NZS leaves after four weeks in the medium. (A) Effect of 6-BA and auxins (NAA, 2,4-D) on callus induction from explants. a-d: concentration of 0, 1.0, 1.5, 2.0 mg·L<sup>-1</sup> 6-BA. Numbers 1-4: concentration of 0, 1.0, 1.5, 2.0 mg·L<sup>-1</sup> NAA. Numbers 5-8: concentration of 0, 1.0, 1.5, 2.0 mg·L<sup>-1</sup> 2,4-D. (B) Effect of zeatin and auxins (IAA, NAA, 2,4-D) on callus induction from explants. a-d: concentration of 0.5, 1.0, 1.5, 2.0 mg·L<sup>-1</sup> zeatin. Numbers 1-4: concentration of 0.5, 1.0, 1.5, 2.0 mg·L<sup>-1</sup> IAA. Numbers 5-8: concentration of 0.5, 1.0, 1.5, 2.0 mg·L<sup>-1</sup> NAA. Numbers 9-12: concentration of 0.5, 1.0, 1.5, 2.0 mg·L<sup>-1</sup> 2,4-D.

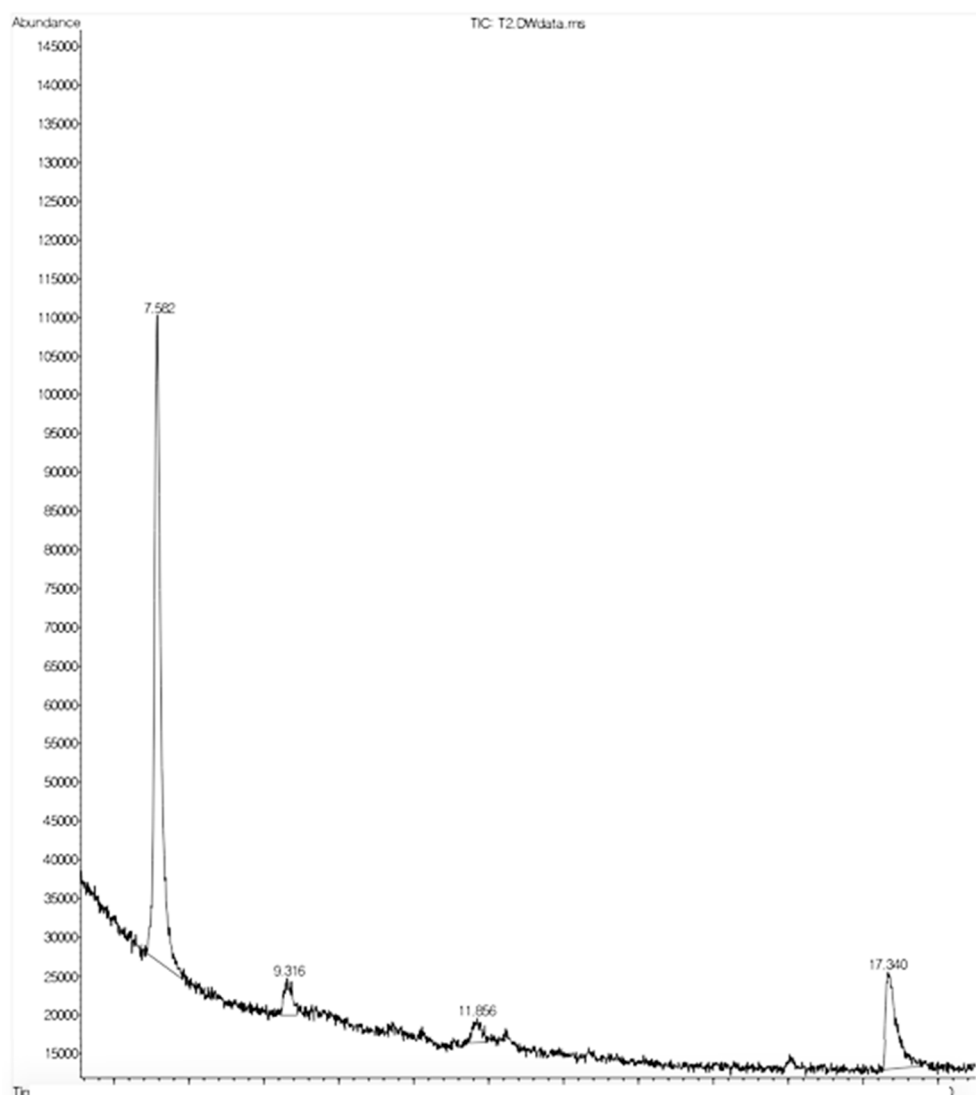


Figure S2. Phytochemicals profile of TGC extracts by gas chromatography-mass spectrometry.

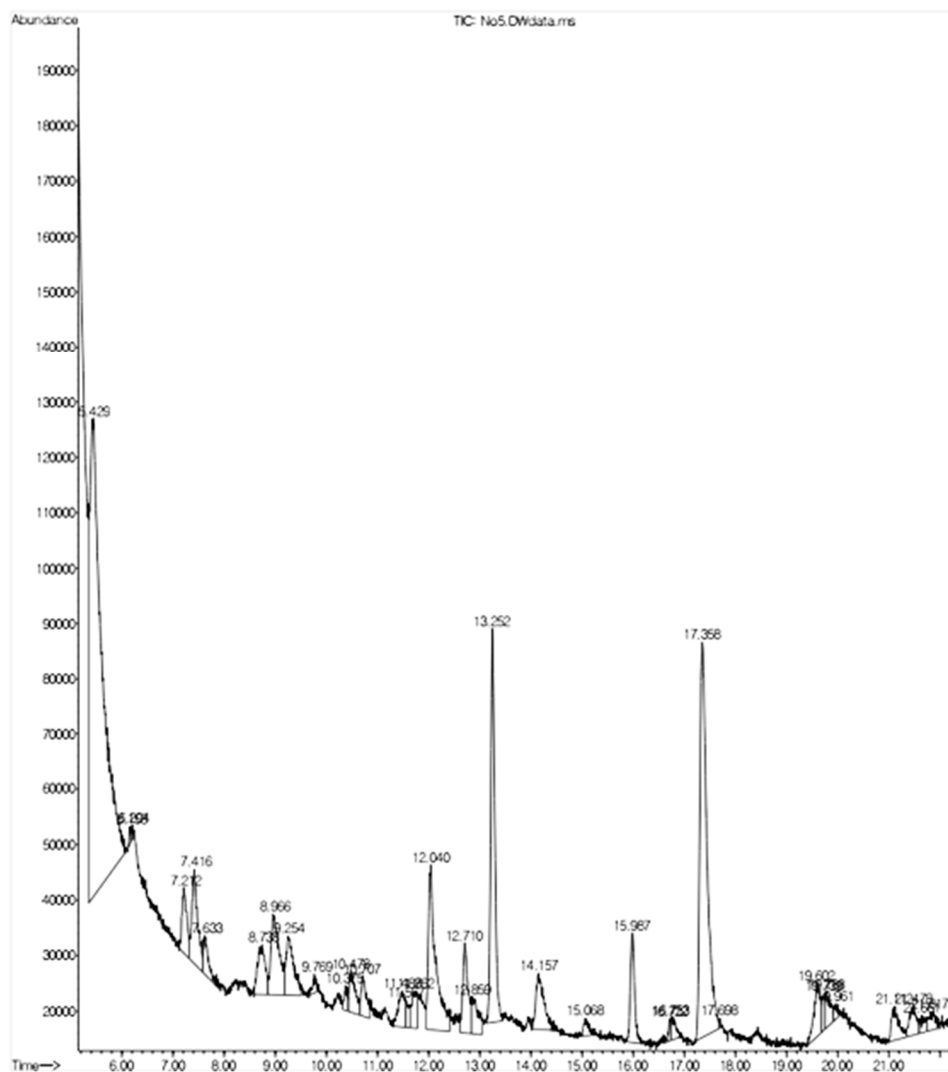


Figure S3. Phytochemicals profile of TNYC extracts by gas chromatography-mass spectrometry.

Table S1. The primers used in this study.

Gene name	Amplicon size	Sequence	Length	GC (%)	Tm
<i>CHS</i>	200	ACCGCAAACCCGAAAAATGAG	21	48	59
		GATGGGGCATCGTAATCGCA	20	55	60
<i>CHI</i>	203	GAGGTGTTCAAGGATGAGATGTT	23	43	61
		CTCTGCTTTGCTTCAGGGGAA	21	52	61
<i>F3H</i>	549	GGCCCGAAAAGCCCAAAGAAT	21	52	61
		TTGCTGCTGTGCCACTTACAC	21	52	61
<i>FLS</i>	391	CATTAGGGCTGGGGCTTGAA	20	55	60
		AGCTTAGGATTTGGCCCGAC	20	55	60
<i>F3'H</i>	246	GGGGTGTTCAATCTTGGGGA	21	52	62
		TGCCTTCACCCCTATCCTCT	21	52	62
<i>DFR</i>	296	TTCTCAACGACGGCTACACT	20	50	59
		AGTCTCCTCACAGTCTTCGC	20	55	59

*CHS* : chalcone synthase, *CHI* : chalcone isomerase, *F3H* : flavanone 3-hydroxylase, *F3'H* : flavonoid 3'-hydroxylase, *FLS* : flavonol synthase, *DFR* : dihydroflavonol 4-reductase.