

# Thoracoscopy

a



bi



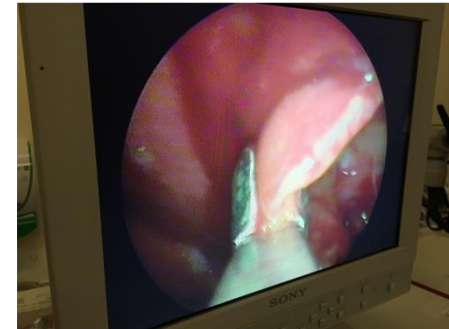
bii



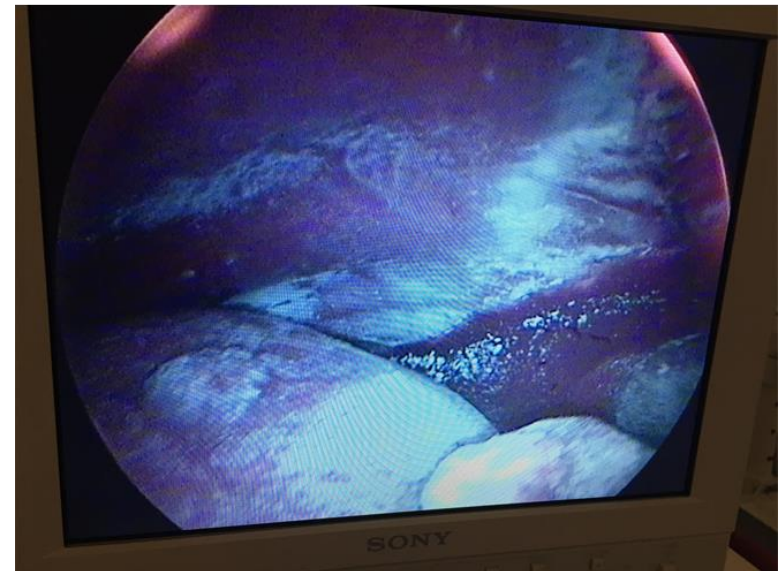
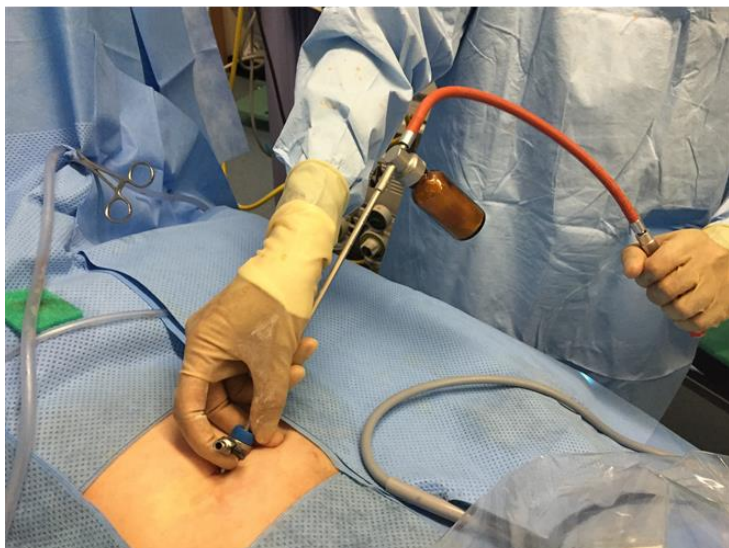
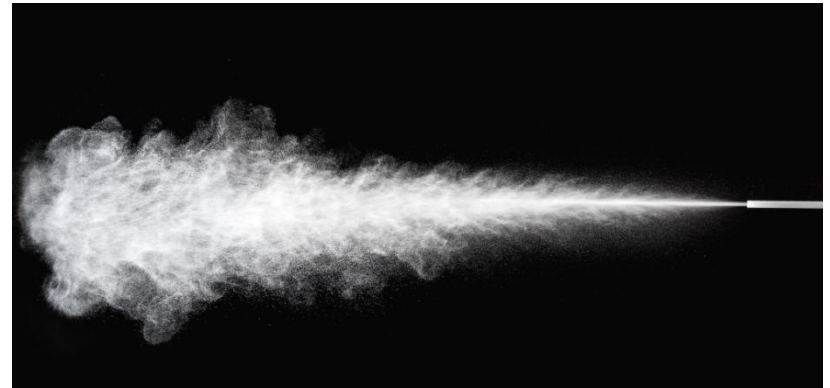
ai



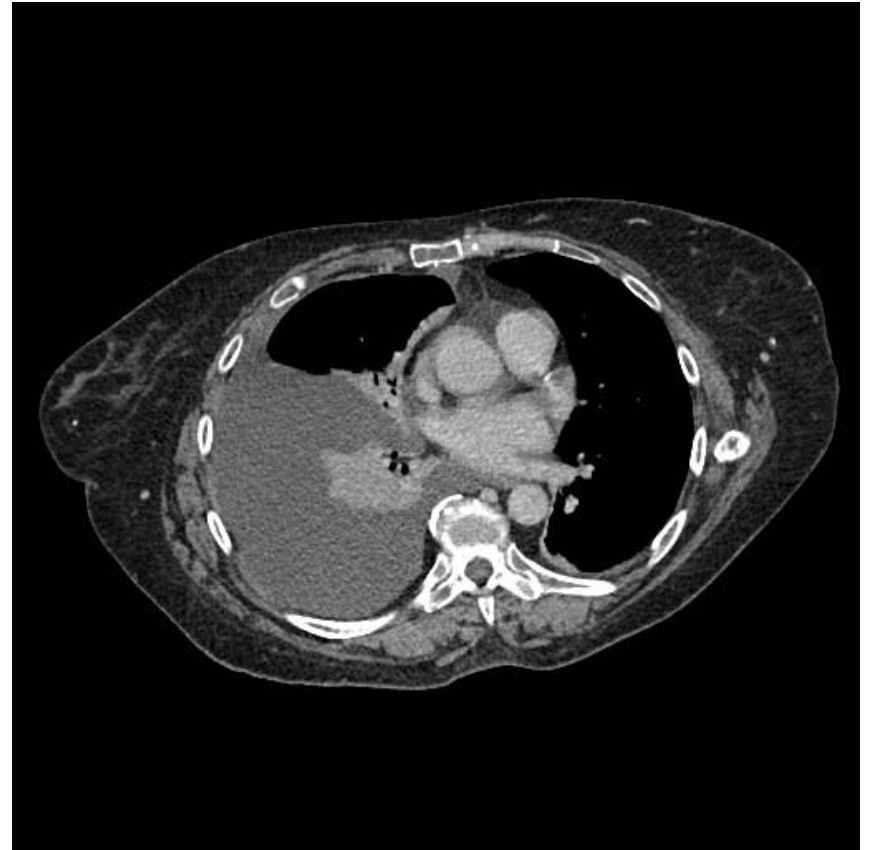
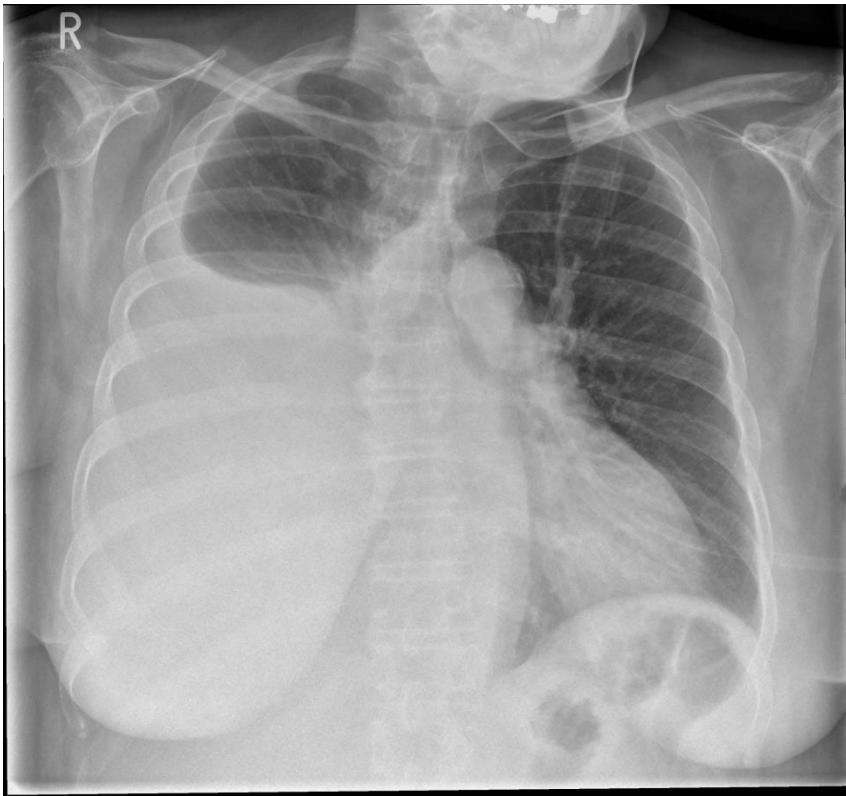
a ii



# Talc poudrage



# Pre-procedure Imaging

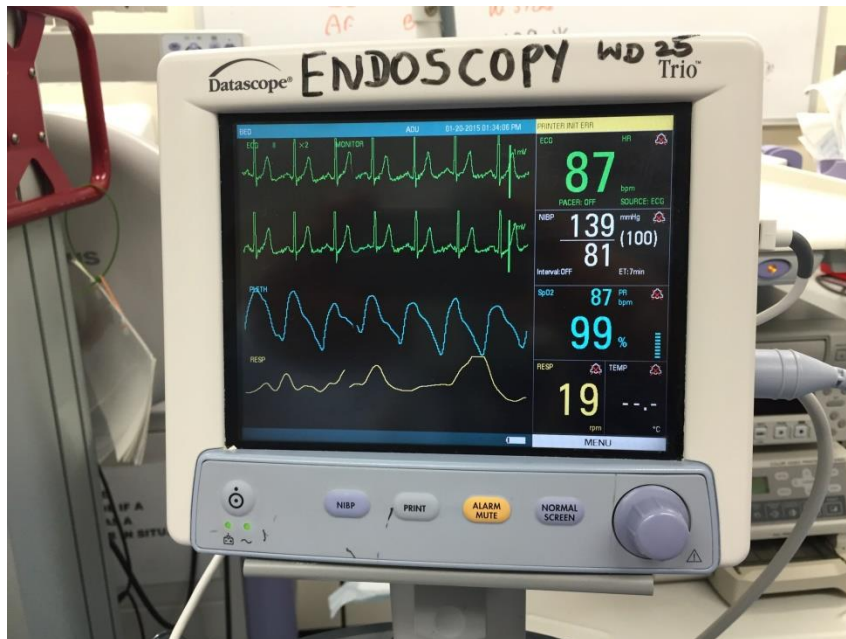




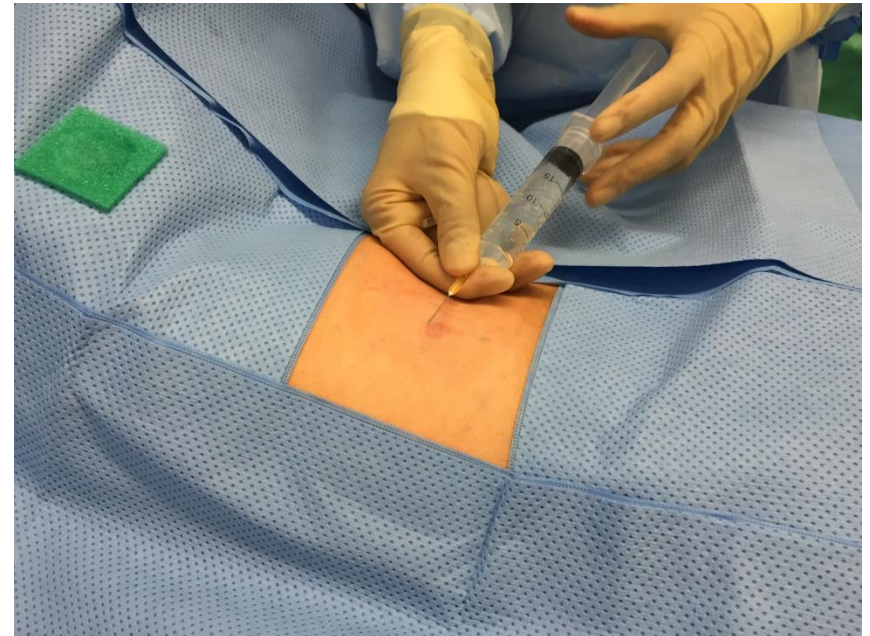
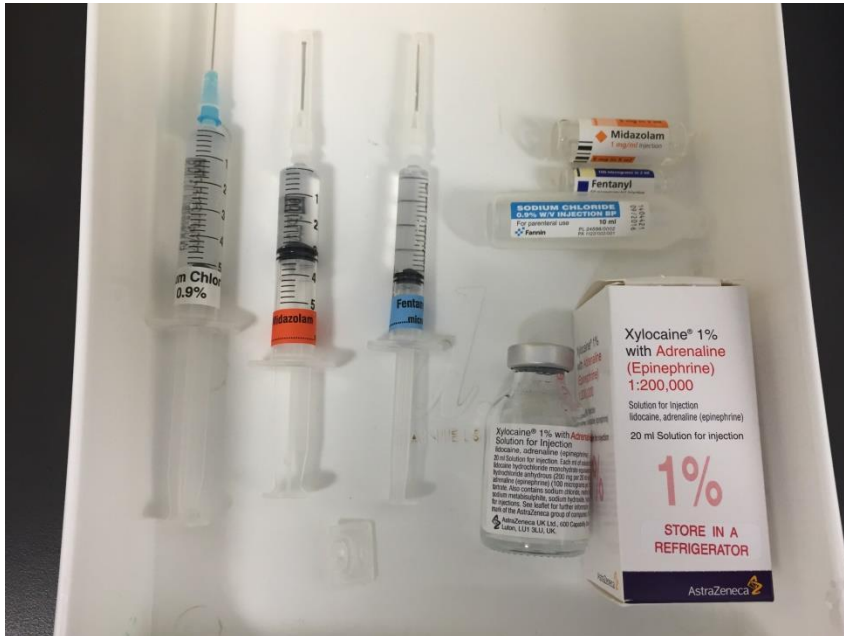
# Step by Step Thoracoscopy



# Monitoring & USS

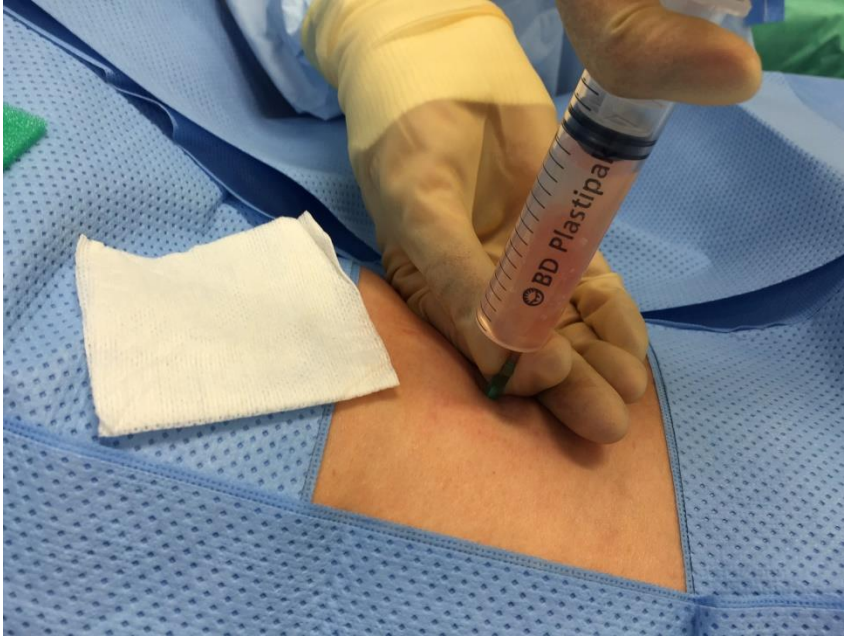


# Sedation & Local anaesthesia

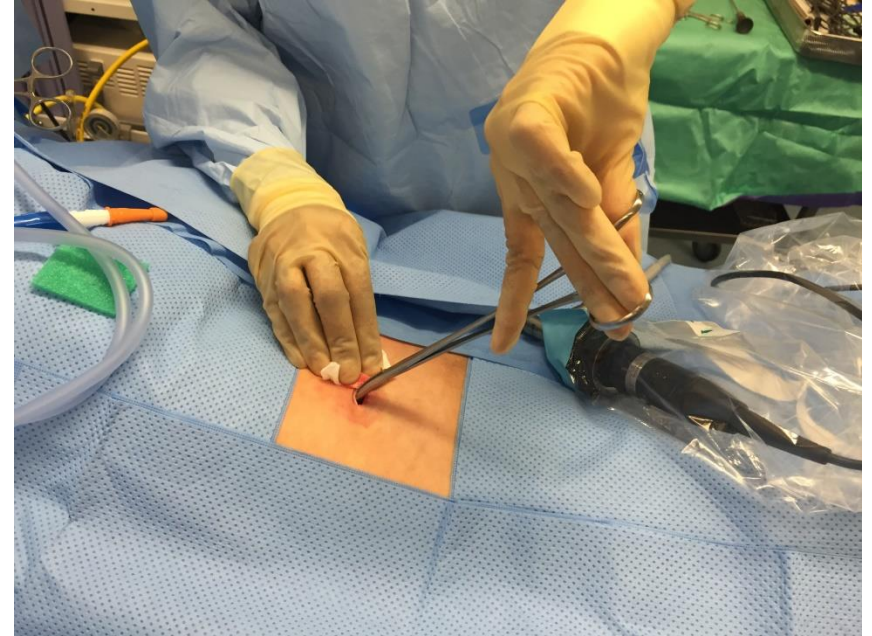
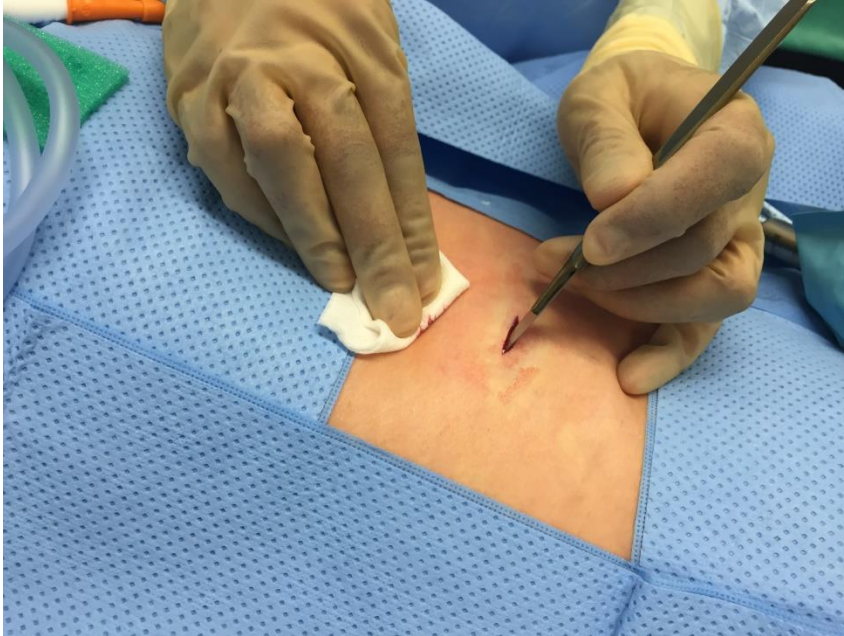




# Aspiration & equipment prep

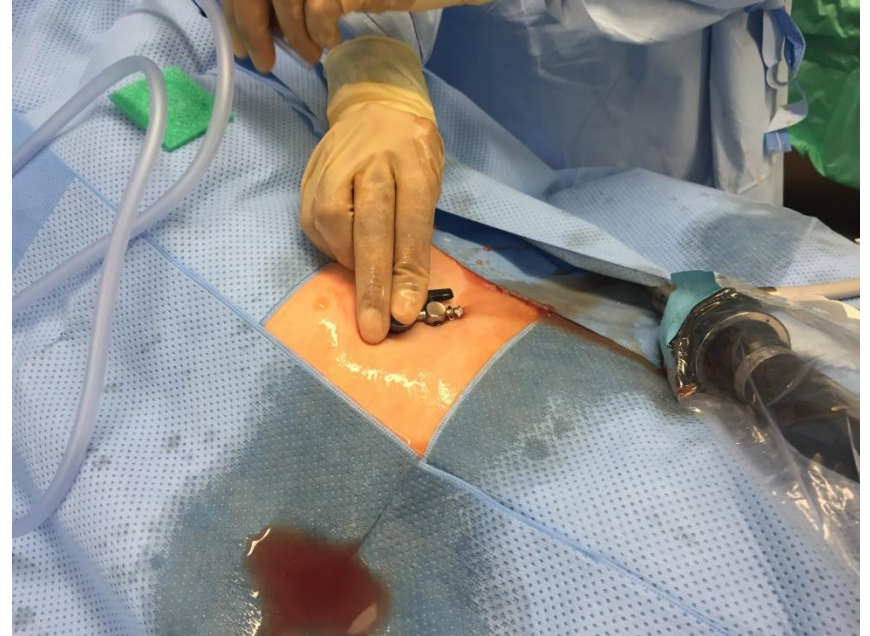
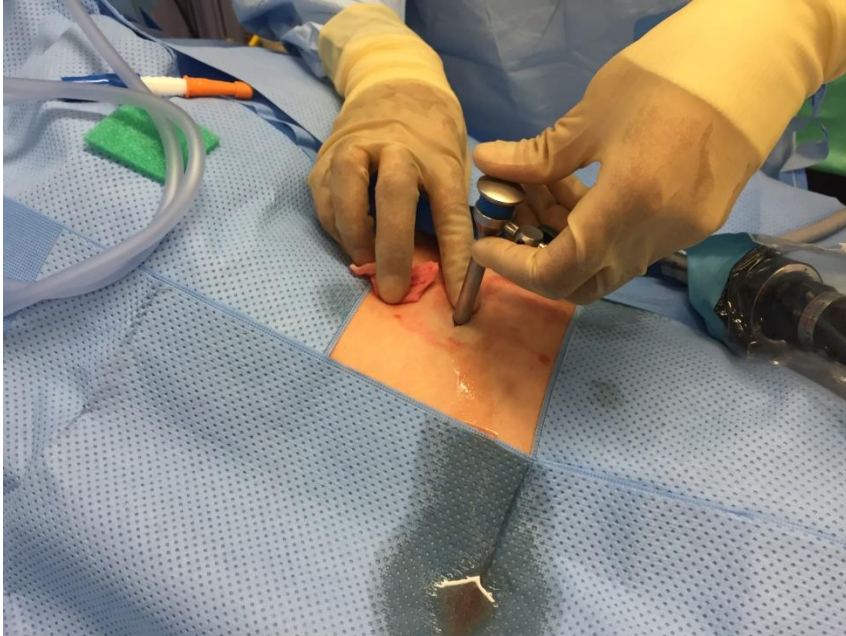


# Incision & blunt dissection

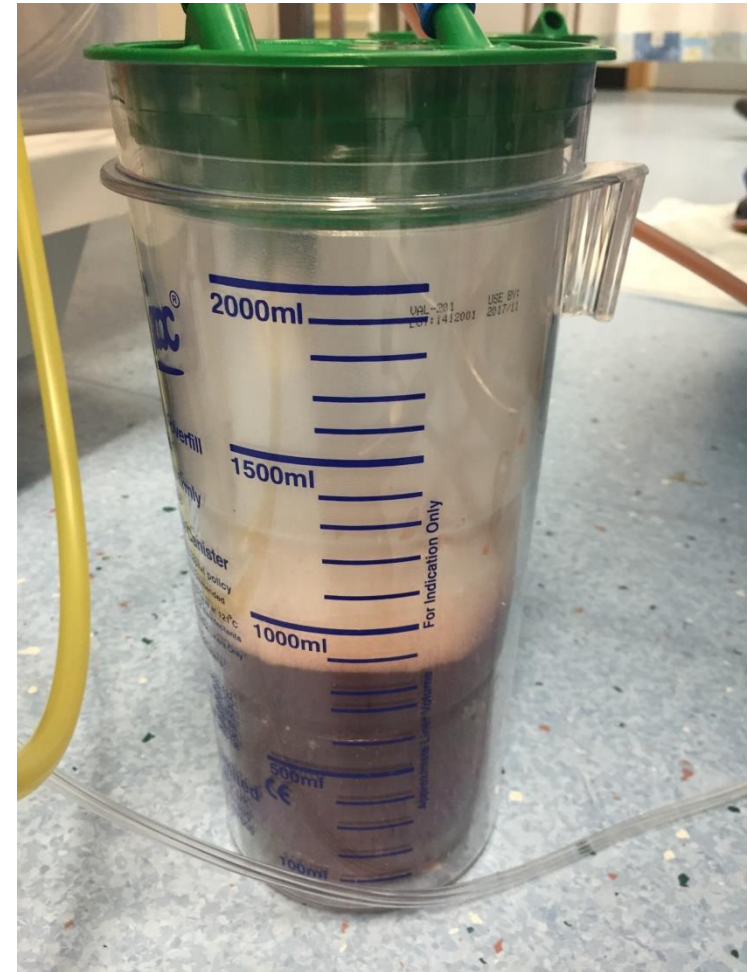




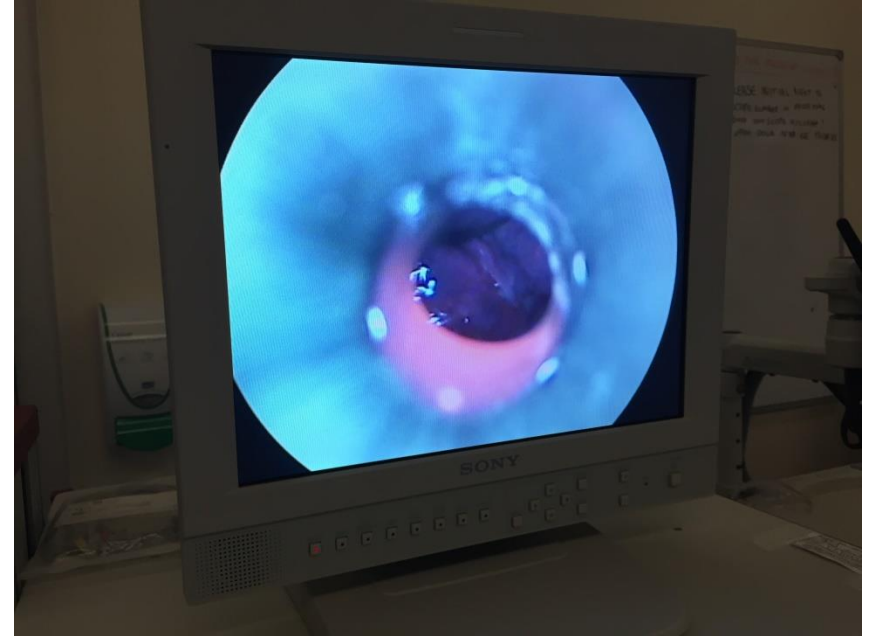
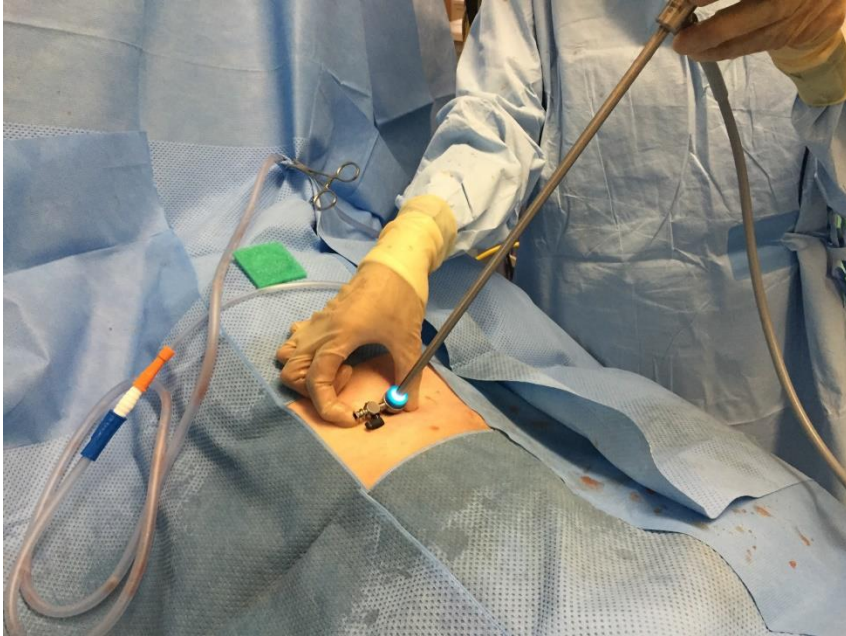
# Trocar & cannulae with valve



# Suction

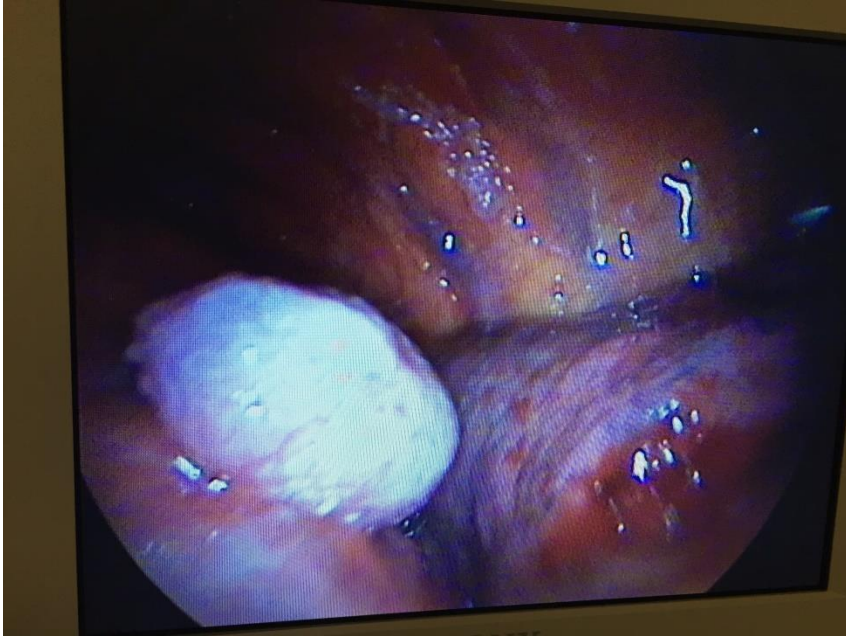


# Camera

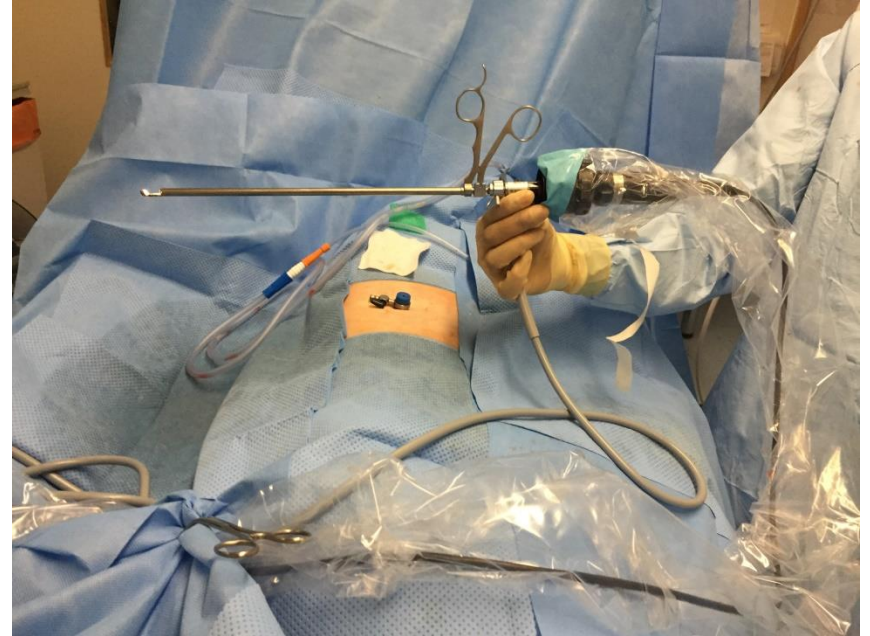




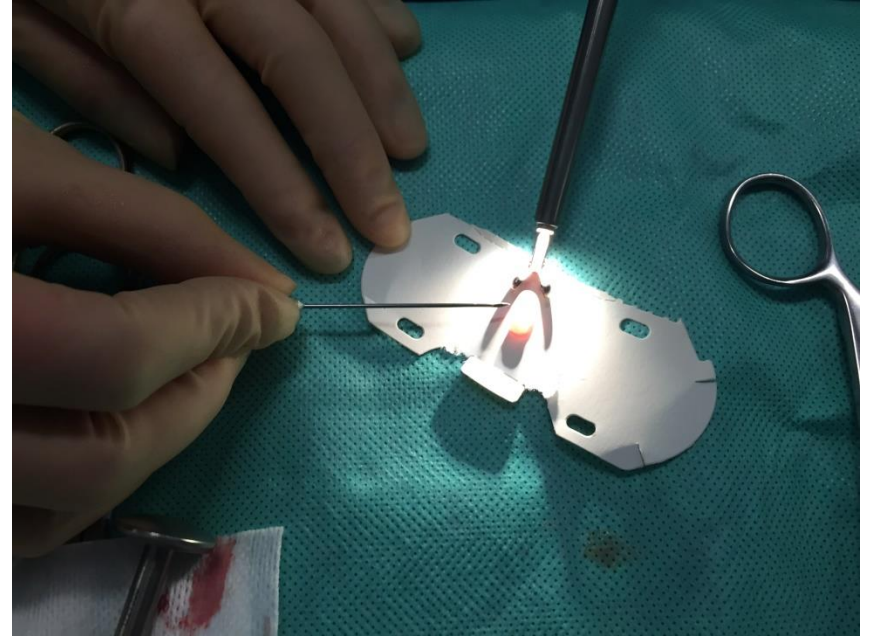
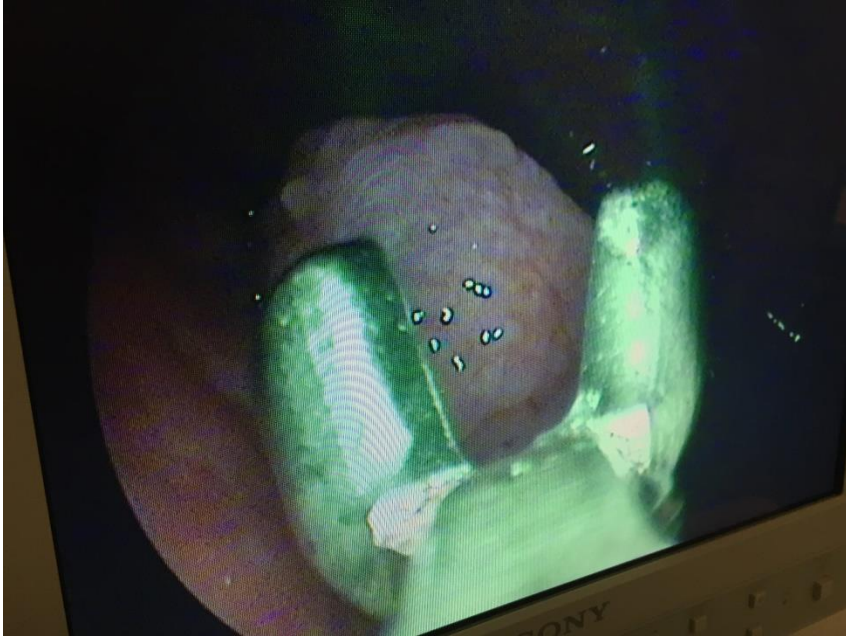
# Macroscopic pathology



# Room set-up & biopsy forceps

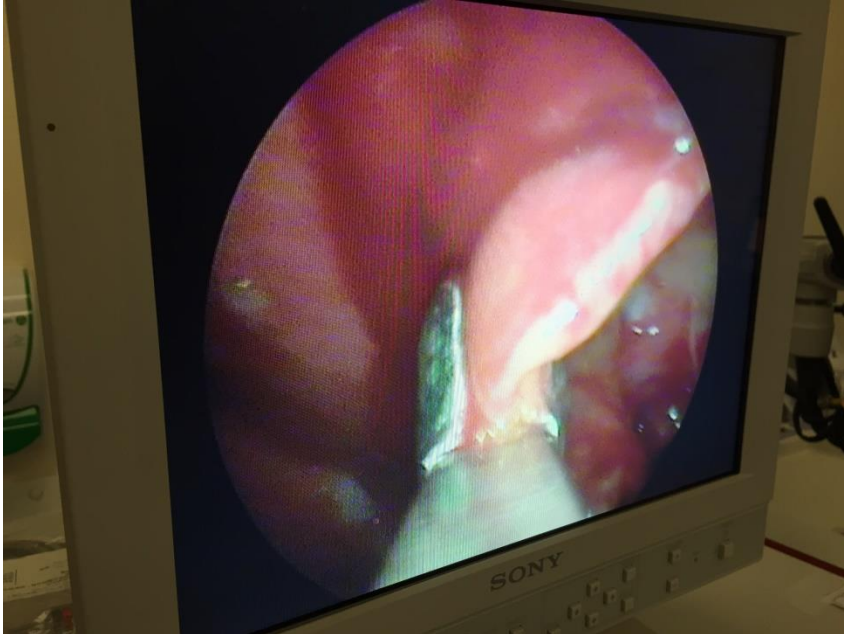


# Biopsies

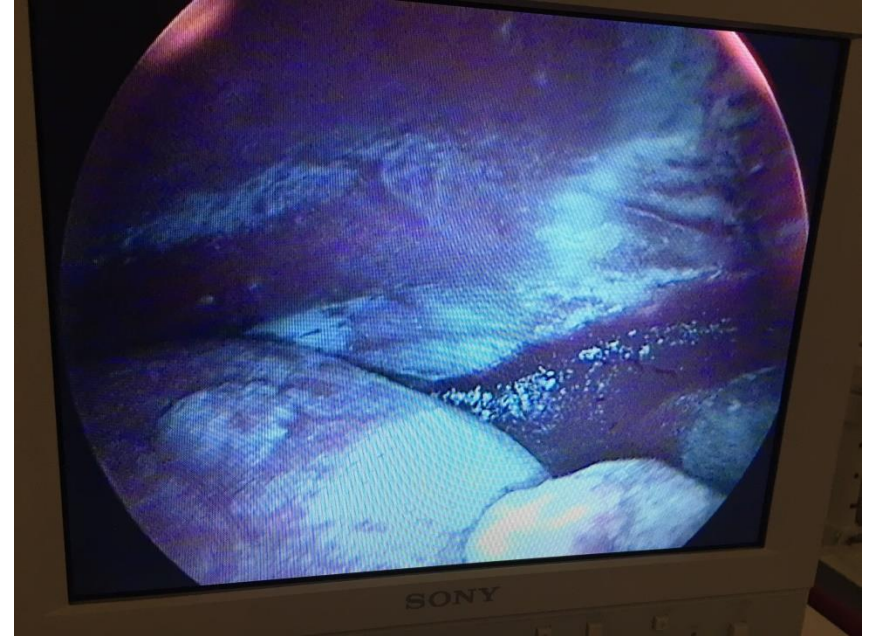
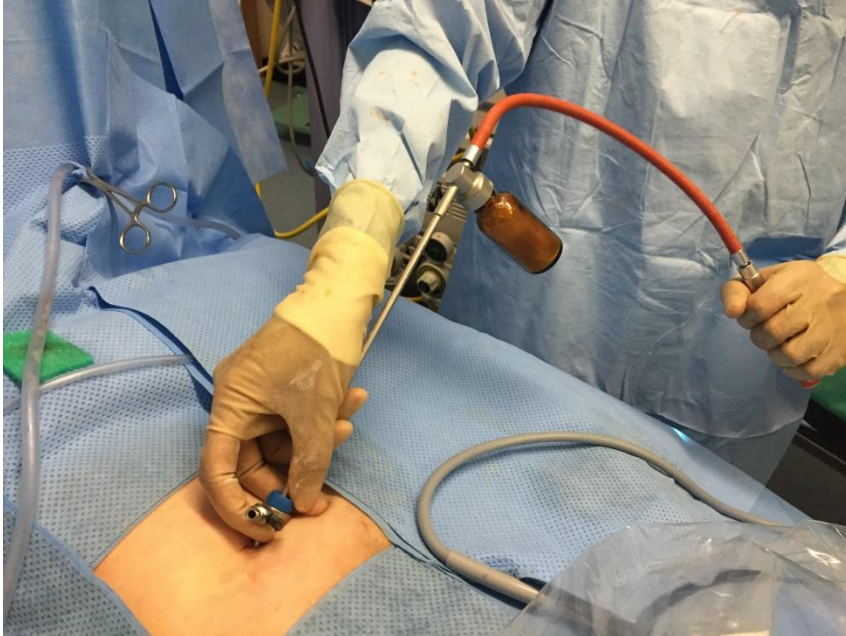




# Biopsies + talc poudrage kit

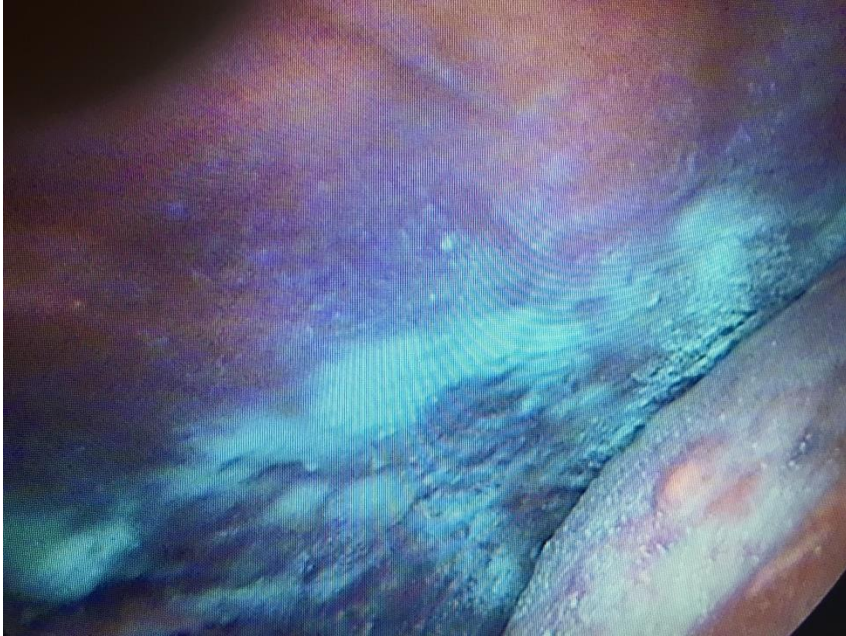


# Talc poudrage





# Talc poudrage + wide bore drain



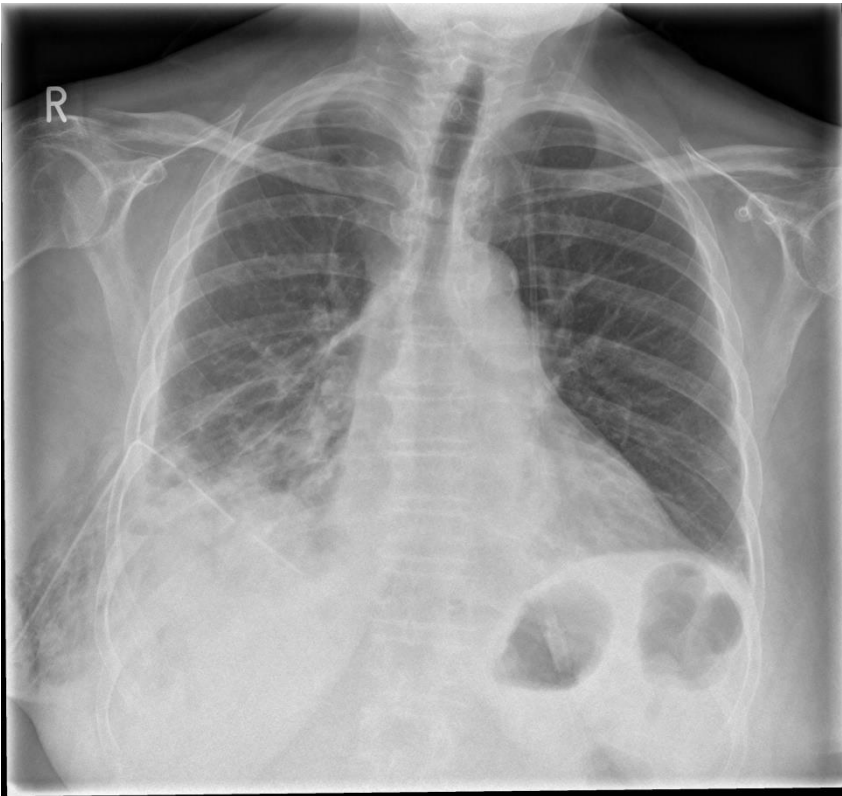


# Dressing & drain

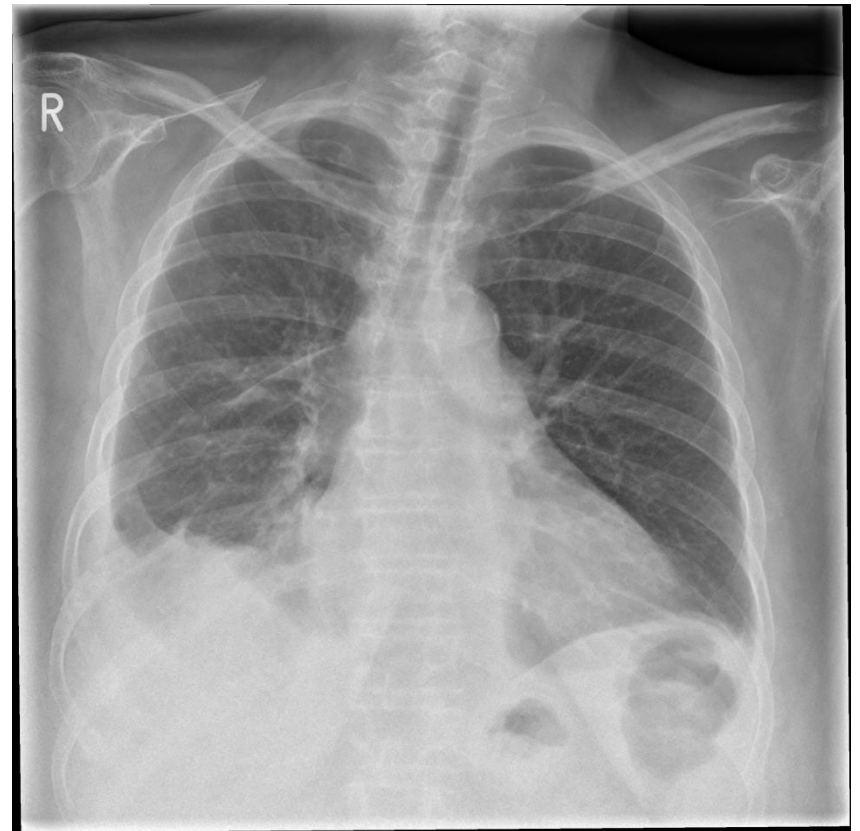


# Post-procedure imaging

**1 hour post LAVAT**



**1 week follow-up**



**Diagnosis: High Grade Serous Adenocarcinoma - Ovarian**